

**GEOLOGIST'S REPORT
DRILLING TIME AND SAMPLE LOG**

COMPANY VESS OIL CORPORATION
LEASE VARNER-PROHASKA #1
FIELD AUGUSTA
LOCATION 110' FSL & 2565' FEL
SECTION 8 TOWNSHIP 28S RANGE 4E
COUNTY BUTLER STATE KANSAS

ELEVATIONS
KB 1264' GL 1258'
Measurements Are All From KB: 1264'
API 15-015-24060-00-00

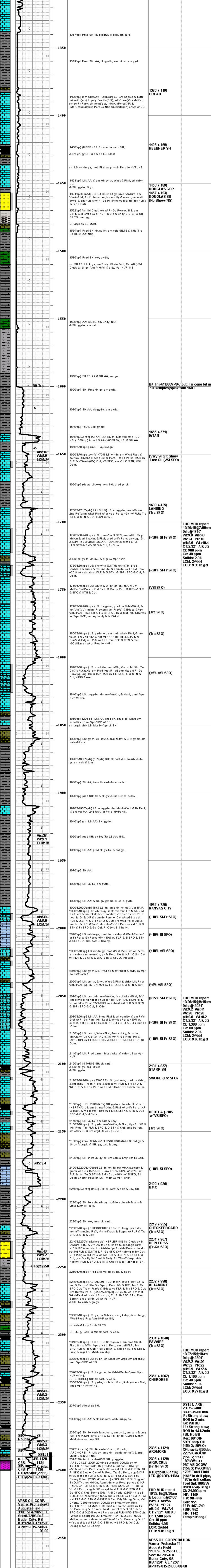
CONTRACTOR C&G Drilling, Rig #1
SPUD 10/23/2015 COMP 10/28/2015
RTD 2400' (-1136) LTD 2400' (-1136)
ELECTRICAL SURVEYS
C&G: DIL & CDL/CNL/PE; & MEL
1 DST by DIAMOND TESTING

CASING
SURFACE 845/8" 23# LS set @ 262' KB
(tally=252) w/ 150 sx Class A, 3%CaCl
PRODUCTION 5412' 15.5#/ft; J-55;
set@2399'; cmt'd w/ 150sx Thickset.

FORMATION TOPS	LOG	SAMPLES	CHRONOLOGY
Oread	1389' (-121)	1389' (-119)	10/19/15; MIRU C&G Rig #1 (2 x 600 bbl frac tanks for fresh wf)
Heebner SH	1424' (-160)	1423' (-169)	10/23/15; Spud rat hole @ 7:20am; Spud 12&14" hole @ 12:00am; TD 12&14" hole @ 2:20; @ 4:15pm; Ran @ 8:45pm; 22# 1 1/2" L.S. cap; Tall=252; sat @ 262' Hg Cmt'd by Consolidated w/150sx Class A, 3%CaCl; CIRC Cmt; Plug dwn @ 6:10pm; 10/23/15; Ticket# 46224
DOUGLAS GRP (SH)	1463' (-190)	1463' (-189)	
DOUGLAS SS	1463' (-190)	1463' (-189)	
Iatan	1636' (-372)	1636' (-371)	
LANSING GRP	1689' (-425)	1689' (-425)	
KANSAS CITY GRP	1985' (-721)	1984' (-720)	
Stark SH	2102' (-838)	2101' (-837)	
BKIC	2190' (-926)	2190' (-926)	
Checkerboard	2219' (-955)	2219' (-955)	
Hepler SS	2231' (-967)	2231' (-967)	
Altamont	2262' (-998)	2262' (-998)	
Pawnee	2304' (-1040)	2304' (-1040)	
CHEROKEE GRP	2330' (-1066)	2331' (-1067)	
Ardmore	2389' (-1121)	2389' (-1121)	
ARBUCKLE	2403' (-1229)	2403' (-1229)	
Total Depth (LTD/RTD)	2400' (-1136)	2400' (-1136)	

REMARKS: ON 10/28/2015, 5&1/2" PRODUCTION CASING WAS SET AT 2399', 1FT OFF SOLID BOTTOM. FOR A COMPLETION IN THE ARBUCKLE (SEE CHRONO SECTION FOR C&G JOB DETAILS). I RECOMMEND FURTHER EVALUATION OF THE HEPLER SS, & REVIEW OF THE ZONES WITH SIGNIFICANT SHOWS OF OIL IN THE LANSING & KANSAS CITY GROUPS, BEFORE ABANDONMENT. RESPECTFULLY SUBMITTED, ROGER L. MARTIN, GEOLOGIST (WELL-SITE)

DEPTH (FEET) | LITHO | POROSITY | DRILLING TIME (MIN/FT) | DST | SAMPLE DESCRIPTION | REMARKS



VESS OIL CORP. Vamer-Prohaska#1 Augusta Field 110' FSL & 2565' FEL Sec-8 T28S-R4E Butler Cnty, KS KB:1264' GL:1258' API#15-015-24060-00-00
print length=75"