



**TRILOBITE  
TESTING, INC**

# DRILL STEM TEST REPORT

Russell Oil, Inc.  
POB 8050  
Edmond, OK 73083  
ATTN: Kitt Noah

**S30-15s-36w Logan/KS**

**McElree Orr 'A' 30-1**

Job Ticket: 64623      **DST#: 1**  
Test Start: 2016.01.17 @ 11:19:00

## GENERAL INFORMATION:

Formation: **LKC 'D'**  
Deviated: No Whipstock: ft (KB)  
Time Tool Opened: 13:19:30  
Time Test Ended: 18:26:50  
Interval: **4129.00 ft (KB) To 4151.00 ft (KB) (TVD)**  
Total Depth: 4151.00 ft (KB) (TVD)  
Hole Diameter: 7.88 inches Hole Condition: Good  
Test Type: Conventional Bottom Hole (Initial)  
Tester: Chuck Smith  
Unit No: 61  
Reference Elevations: 3348.00 ft (KB)  
3339.00 ft (CF)  
KB to GR/CF: 9.00 ft

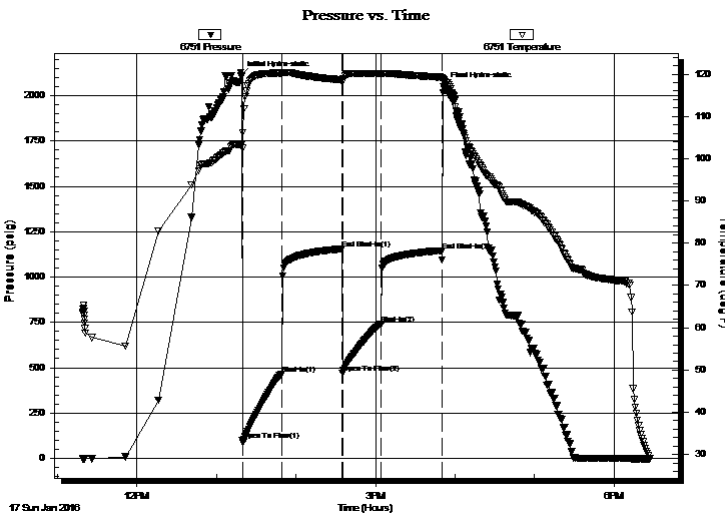
## Serial #: 6751

Outside

Press@RunDepth: 742.93 psig @ 4130.00 ft (KB)      Capacity: 8000.00 psig  
Start Date: 2016.01.17      End Date: 2016.01.17      Last Calib.: 2016.01.17  
Start Time: 11:19:02      End Time: 18:26:50      Time On Btm: 2016.01.17 @ 13:18:30  
Time Off Btm: 2016.01.17 @ 15:51:20

TEST COMMENT: 30- B.O.B. @ 3 min.  
45- No return.  
30- B.O.B. @ 3 1/2 min.  
45- No return.

## PRESSURE SUMMARY



Time (Min.)	Pressure (psig)	Temp (deg F)	Annotation
0	2108.74	103.37	Initial Hydro-static
1	101.18	102.44	Open To Flow (1)
31	467.02	120.22	Shut-In(1)
77	1154.76	118.57	End Shut-In(1)
77	469.76	118.24	Open To Flow (2)
106	742.93	120.06	Shut-In(2)
152	1145.34	119.24	End Shut-In(2)
153	2049.09	118.56	Final Hydro-static

## Recovery

Length (ft)	Description	Volume (bbl)
1197.00	W 100w	16.97
398.00	MW 50m 50w	5.64

## Gas Rates

	Choke (inches)	Pressure (psig)	Gas Rate (Mcf/d)



**TRILOBITE  
TESTING, INC**

# DRILL STEM TEST REPORT

## FLUID SUMMARY

Russell Oil, Inc.

**S30-15s-36w Logan/KS**

POB 8050  
Edmond, OK 73083

**McElree Orr 'A' 30-1**

Job Ticket: 64623      **DST#: 1**

ATTN: Kitt Noah

Test Start: 2016.01.17 @ 11:19:00

### Mud and Cushion Information

Mud Type: Gel Chem

Cushion Type:

Oil API:

deg API

Mud Weight: 9.00 lb/gal

Cushion Length: ft

Water Salinity: 70000 ppm

Viscosity: 67.00 sec/qt

Cushion Volume: bbl

Water Loss: 7.20 in<sup>3</sup>

Gas Cushion Type:

Resistivity: 0.00 ohm.m

Gas Cushion Pressure: psig

Salinity: 5000.00 ppm

Filter Cake: 1.00 inches

### Recovery Information

Recovery Table

Length ft	Description	Volume bbl
1197.00	W 100w	16.968
398.00	MW 50m 50w	5.642

Total Length: 1595.00 ft      Total Volume: 22.610 bbl

Num Fluid Samples: 0

Num Gas Bombs: 0

Serial #:

Laboratory Name:

Laboratory Location:

Recovery Comments: No strap, tool landed about 3' lower than expected.

RW: .351 @ 22 Degrees F = 70000 PPM

