



TRILOBITE TESTING, INC.

DRILL STEM TEST REPORT

Russell Oil, Inc.
 POB 8050
 Edmond, OK 73083
 ATTN: Kitt Noah

S30-15s-36w Logan/KS

McElree Orr 'A' 30-1

Job Ticket: 64501 **DST#: 4**
 Test Start: 2016.01.20 @ 21:45:00

GENERAL INFORMATION:

Formation: **Altamont 'A'**
 Deviated: No Whipstock: ft (KB)
 Time Tool Opened: 00:26:00
 Time Test Ended: 06:09:39
 Interval: **4459.00 ft (KB) To 4524.00 ft (KB) (TVD)**
 Total Depth: 4524.00 ft (KB) (TVD)
 Hole Diameter: 7.88 inches Hole Condition: Good
 Test Type: Conventional Bottom Hole (Reset)
 Tester: Chuck Smith
 Unit No: 61
 Reference Elevations: 3348.00 ft (KB)
 3339.00 ft (CF)
 KB to GR/CF: 9.00 ft

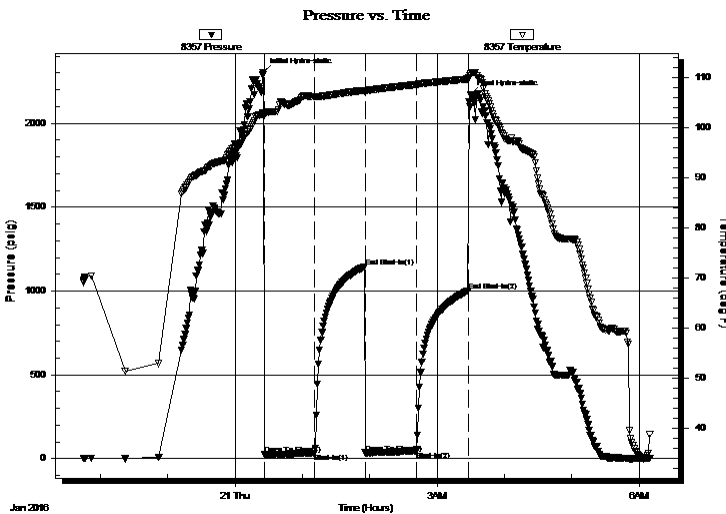
Serial #: 8357

Inside

Press @ Run Depth: 44.30 psig @ 4461.00 ft (KB) Capacity: 8000.00 psig
 Start Date: 2016.01.20 End Date: 2016.01.21 Last Calib.: 2016.01.21
 Start Time: 21:45:02 End Time: 06:09:40 Time On Btm: 2016.01.21 @ 00:24:50
 Time Off Btm: 2016.01.21 @ 03:30:00

TEST COMMENT: 45- 3" Blow .
 45- No return.
 45- Surface blow .
 45- No return.

PRESSURE SUMMARY



Time (Min.)	Pressure (psig)	Temp (deg F)	Annotation
0	2304.22	102.97	Initial Hydro-static
2	23.58	102.42	Open To Flow (1)
46	33.85	106.24	Shut-In(1)
91	1146.03	107.55	End Shut-In(1)
91	34.81	107.05	Open To Flow (2)
137	44.30	108.69	Shut-In(2)
183	1002.61	109.81	End Shut-In(2)
186	2171.87	110.85	Final Hydro-static

Recovery

Length (ft)	Description	Volume (bbl)
0.00	API: @ Degrees F =	0.00
0.00	RW: @ Degrees F = PPM	0.00
50.00	OSM 100m	0.71

* Recovery from multiple tests

Gas Rates

	Choke (inches)	Pressure (psig)	Gas Rate (Mcf/d)

