

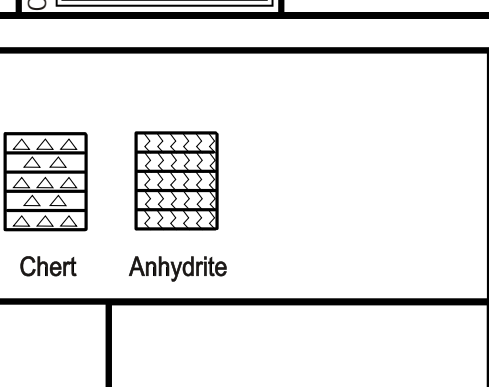
KITT NOAH

PETROLEUM GEOLOGIST
Kansas License #229



GEOLOGIST'S REPORT

DRILLING TIME AND SAMPLE LOG

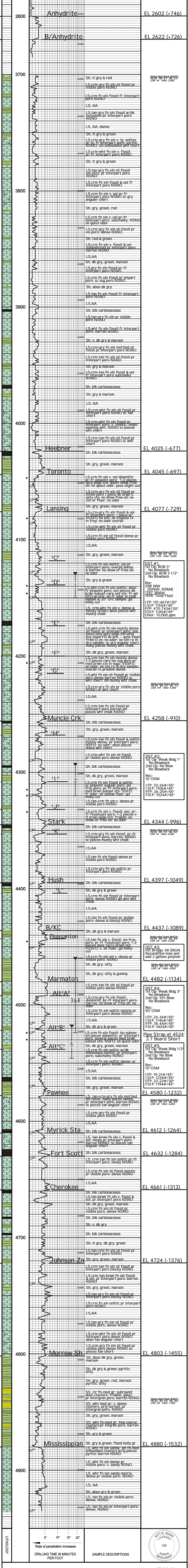


ELEVATION: **KB 3348**
GL: **3339**
MEASURED FROM: **KB**

OPERATOR: Russell Oil, Inc.	LOCATION: 1895/FN & 1470/FE
LEASE: McElree Orr "A" WELL NO: #30-1	SEC: 30 TWP: 15S RNG: 36W
API: 15-109-21450 FIELD: Wildcat	COUNTY: Logan STATE: Kansas

FORMATION	LOG	CONTRACTOR: Southwind Drilling Co #8
ANHYDRITE	2602 (+746)	COMM: 1-11-2016 COMP: 1-24-2016
B/ANHYDRITE	2622 (+726)	RTD: 4935 LTD: 4939
Heebner	4025 (-677)	SAMPLES SAVED FROM: 3700 TO TD
TORONTO	4045 (-697)	DRILLING TIME SAVED FROM: 3700 TO TD
LANSING	4077 (-729)	SAMPLES EXAMINED FROM: 3700 TO TD
B/KC	4344 (-1089)	GEO. ORICAL SUPERVISION FROM: 3920 TO TD
Marmaton	4482 (-1134)	MUD JIP: 3450 MUD TYPE: Chemical
Pawnee	4580 (-1232)	Mudco - Reddy/KH/MS/MS/Master
Cherokee	4661 (-1313)	DRILL STEAMERS: JACKEN, G
MISSISSIPPIAN	4880 (-1532)	DRILL STEAMERS: JACKEN, G
TD	4935 (-1587)	DRILL STEAMERS: JACKEN, G
TD	4939 (-1591)	DRILL STEAMERS: JACKEN, G

LEGEND



ELEVATION: **KB 3348**

OPERATOR: Russell Oil, Inc.	LOCATION: 1895/FN & 1470/FE
LEASE: McElree Orr "A" WELL NO: #30-1	SEC: 30 TWP: 15S RNG: 36W
API: 15-109-21450 FIELD: Wildcat	COUNTY: Logan STATE: Kansas

