



OIL FIELD SURVEYORS

BOX 8604 - PRATT, KS 67124
(620) 672-6491

37161
INVOICE NO.

CMX INC
OPERATOR

4&5
NO.

KOSAR
FARM

Barton
COUNTY

5 16s 13w
S T R

S/2 SW SE & W/2 E/2 SE
LOCATION

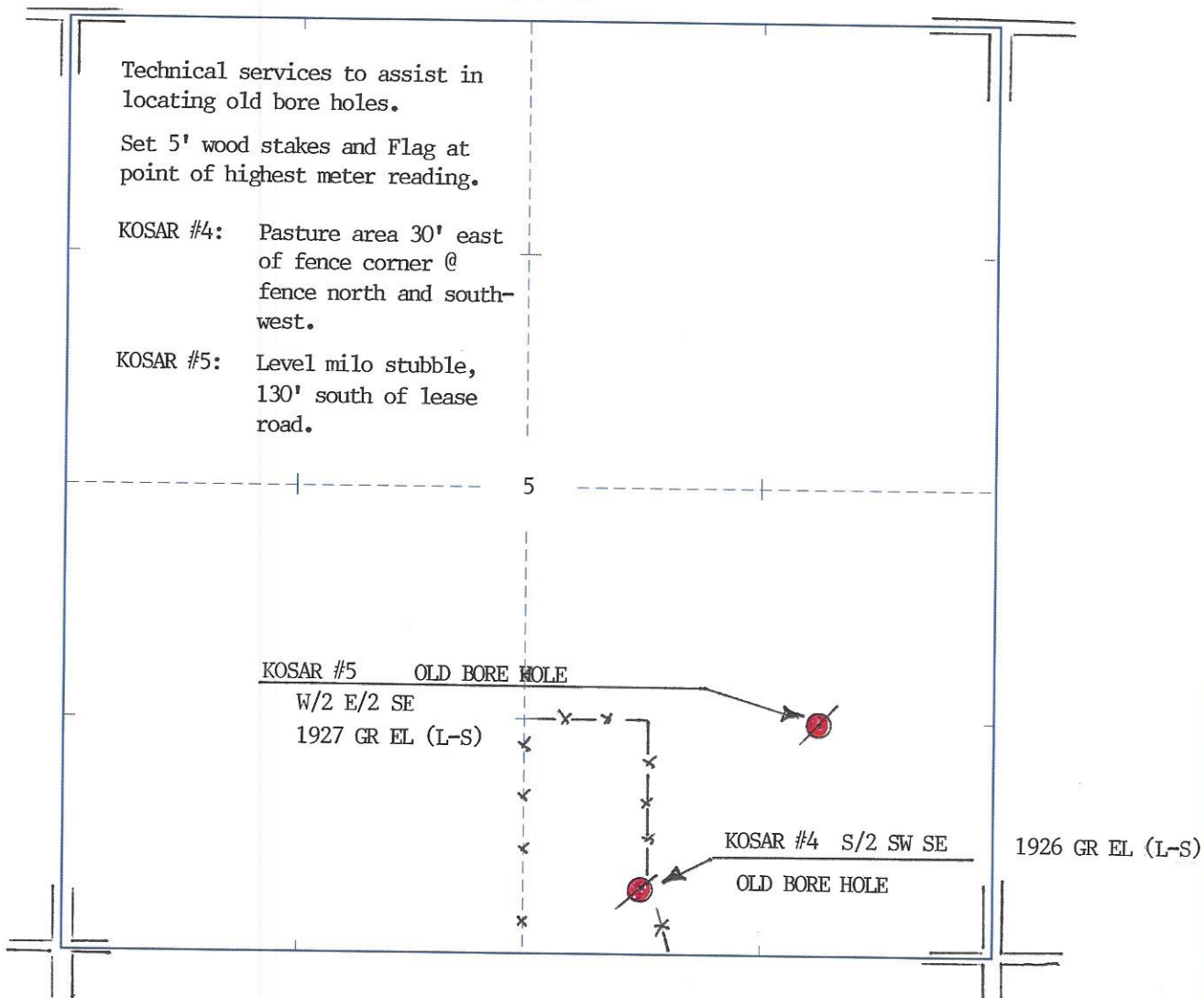
ELEVATION: _____



CMX INC
1700 N Waterfront Pkwy
Bldg 300, Ste B
Wichita, KS 67206

AUTHORIZED BY: Leah Kasten

SCALE: 1" = 1000'



DATE STAKED: 3/7/16

**P. O. Box 8604
10168 S. Hwy 281
Pratt, KS 67124**

DATE	INVOICE #
3/9/2016	37161

CMX, Inc.
1700 N Waterfront Parkway
Building 300, Suite B
Wichita, KS 67206

TERMS	PROJECT
Due Upon Receipt	

DESCRIPTION	AMOUNT
Technical Services to assist in the relocating of bore hole on KOSAR #4 in section 5-16s-13w, S/2 SW SE in Barton County, Kansas	450.00
Total	\$450.00

**P. O. Box 8604
10168 S. Hwy 281
Pratt, KS 67124**

DATE	INVOICE #
3/9/2016	37162

BILL TO	
CMX, Inc. 1700 N Waterfront Parkway Building 300, Suite B Wichita, KS 67206	

TERMS	PROJECT
Due Upon Receipt	

DESCRIPTION	AMOUNT
Technical Services to assist in the relocating of bore hole on KOSAR #5 in Section 5-16s-13w, W/2 E/2 SE in Barton County, Kansas	350.00
Total	\$350.00