

Terry McLeod
 Consulting Geologist
 P.O. Box 503
 Wichita, Kansas 67201
 316-640-2440

GEOLOGIST'S REPORT
 DRILLING TIME AND SAMPLE LOG

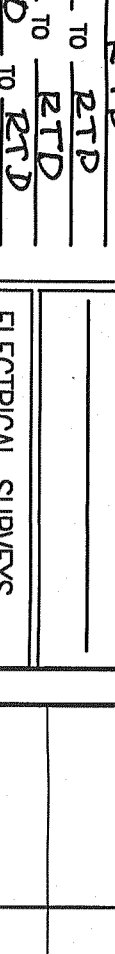
OPERATOR: Cobalt Energy LLC
 LEASE: Krankenberg Well No. A-1-9
 FIELD: Krankenberg
 LOCATION: 2305' SEL of 2552' FEL
 SEC. 9 TWP. 24S RGE. 23W
 COUNTY: Hodgeman STATE: KANSAS

DRILLING TIME AND SAMPLE LOG
 ELEVATION: 2442'
 DEPTH: 2442'
 DR: 2437'
 GI: Measurements are all from K.B.
 CASING RECORD: 8 1/2" @ 218'
 SURFACE: 8 1/2" @ 218'
 PRODUCTION: None

SMALLS EXAMINED FROM 3,800 TO 4,210
 GEOLOGICAL SUPERVISION FROM 3,750 TO 4,210
 MUD UP 3,600 (TYPE MUD: Chemica)

FORMATION: TOP LOG MEASUREMENTS
 HEUBNER SL. 4617 -1515 (602) -1679 -18
 LANSING 4492 -1498 (408) -1520 -18
 CHESTER 4462 -2028 (442) -2020 -19
 CHESTER 4463 -2139 (457) -2137 -19
 MISSISSIPPI 4716 -2274 (4716) -2274 -19
 MISSISSIPPI 4716 -2274 (4716) -2274 -19
 DELONITE 4745 -2306 (4745) -2306 -19

ELECTRICAL SURVEYS
 Dual: Induction
 Density / Neutron
 Poreac Energy Scan
 #130



REFERENCE WELL FOR STRUCTURAL COMPARISON
 Krankenberg B-2 C.N.E. Sec 9 - 21S - 23W

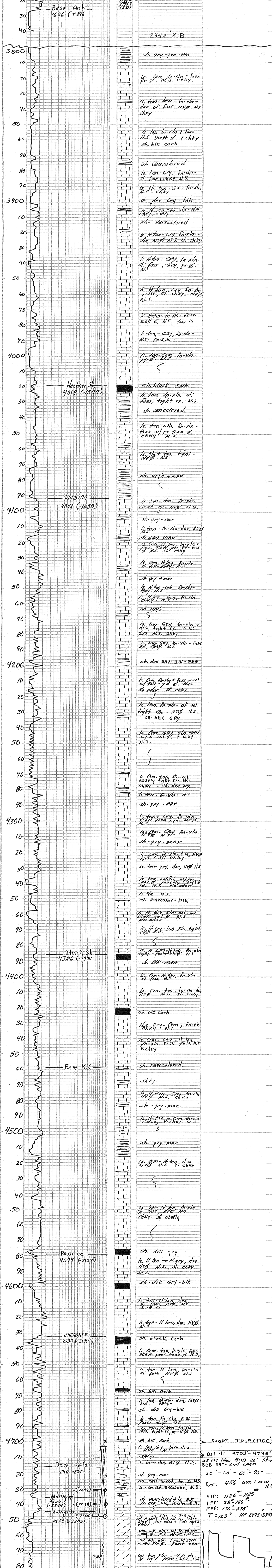
DATE	DEPTH	NO	SIZE	WAVE	THE	DEPTH OUT	FEET	FORES
3-02-16	Spud well	A 1214	1/2"	VEL	FET	218	218	N/A
3-09-16	416	1	7/8"	HTC	64702	4800'	4582	N/A
3-09-16	416							
3-01-16	419							
3-08-16	411							
3-09-16	Plugged well							

No.	Interval	RT/Min	SR/Min	FF/Min	FR/Min	RAH	REMARKS
1	4703-4716	116	1126	110-115	1125	2415	141' - 146' on 300' well 187' m.c.w. 1978' w
	45'	30	60	60	90	1387	45' to h.t. 1102
							1/2" hole testing

LEGEND

Anyhydrite Salt Sandstone Shale Carb sh Limestone Ool.Limrte Chert Dolomite

SCALE " = 100'



COMPANY: Cobalt Energy LLC
 LEASE: Krankenberg Unit "A" 1-9
 LOCATION: 2305' SEL of 2552' FEL SEC. 9 TWP. 24S RGE. 23W
 COUNTY: Hodgeman STATE: Kansas
 ELEVATION: 2442' K.B.