



# TEMPORARY ABANDONMENT WELL APPLICATION

OPERATOR: License# \_\_\_\_\_  
 Name: \_\_\_\_\_  
 Address 1: \_\_\_\_\_  
 Address 2: \_\_\_\_\_  
 City: \_\_\_\_\_ State: \_\_\_\_\_ Zip: \_\_\_\_\_ + \_\_\_\_\_  
 Contact Person: \_\_\_\_\_  
 Phone: ( \_\_\_\_\_ ) \_\_\_\_\_  
 Contact Person Email: \_\_\_\_\_  
 Field Contact Person: \_\_\_\_\_  
 Field Contact Person Phone: ( \_\_\_\_\_ ) \_\_\_\_\_

API No. 15- \_\_\_\_\_  
 Spot Description: \_\_\_\_\_  
 \_\_\_\_\_ - \_\_\_\_\_ - \_\_\_\_\_ - \_\_\_\_\_ Sec. \_\_\_\_\_ Twp. \_\_\_\_\_ S. R. \_\_\_\_\_  E  W  
 \_\_\_\_\_ feet from  N /  S Line of Section  
 \_\_\_\_\_ feet from  E /  W Line of Section  
 GPS Location: Lat: \_\_\_\_\_, Long: \_\_\_\_\_  
(e.g. xx.xxxxx) (e.g. -xxx.xxxxx)  
 Datum:  NAD27  NAD83  WGS84  
 County: \_\_\_\_\_ Elevation: \_\_\_\_\_  GL  KB  
 Lease Name: \_\_\_\_\_ Well #: \_\_\_\_\_  
 Well Type: (check one)  Oil  Gas  OG  WSW  Other: \_\_\_\_\_  
 SWD Permit #: \_\_\_\_\_  ENHR Permit #: \_\_\_\_\_  
 Gas Storage Permit #: \_\_\_\_\_  
 Spud Date: \_\_\_\_\_ Date Shut-In: \_\_\_\_\_

	Conductor	Surface	Production	Intermediate	Liner	Tubing
Size						
Setting Depth						
Amount of Cement						
Top of Cement						
Bottom of Cement						

Casing Fluid Level from Surface: \_\_\_\_\_ How Determined? \_\_\_\_\_ Date: \_\_\_\_\_

Casing Squeeze(s): \_\_\_\_\_ to \_\_\_\_\_ w / \_\_\_\_\_ sacks of cement, \_\_\_\_\_ to \_\_\_\_\_ w / \_\_\_\_\_ sacks of cement. Date: \_\_\_\_\_  
(top) (bottom) (top) (bottom)

Do you have a valid Oil & Gas Lease?  Yes  No

Depth and Type:  Junk in Hole at \_\_\_\_\_  Tools in Hole at \_\_\_\_\_ Casing Leaks:  Yes  No Depth of casing leak(s): \_\_\_\_\_  
(depth) (depth)

Type Completion:  ALT. I  ALT. II Depth of:  DV Tool: \_\_\_\_\_ w / \_\_\_\_\_ sacks of cement  Port Collar: \_\_\_\_\_ w / \_\_\_\_\_ sack of cement  
(depth) (depth)

Packer Type: \_\_\_\_\_ Size: \_\_\_\_\_ Inch Set at: \_\_\_\_\_ Feet

Total Depth: \_\_\_\_\_ Plug Back Depth: \_\_\_\_\_ Plug Back Method: \_\_\_\_\_

**Geological Data:**

Formation Name	Formation Top	Formation Base	Completion Information
1. _____	At: _____	to _____ Feet	Perforation Interval _____ to _____ Feet or Open Hole Interval _____ to _____ Feet
2. _____	At: _____	to _____ Feet	Perforation Interval _____ to _____ Feet or Open Hole Interval _____ to _____ Feet

~~UNDER PENALTY OF PERJURY I HEREBY ATTEST THAT THE INFORMATION CONTAINED HEREIN IS TRUE AND CORRECT TO THE BEST OF MY KNOWLEDGE~~

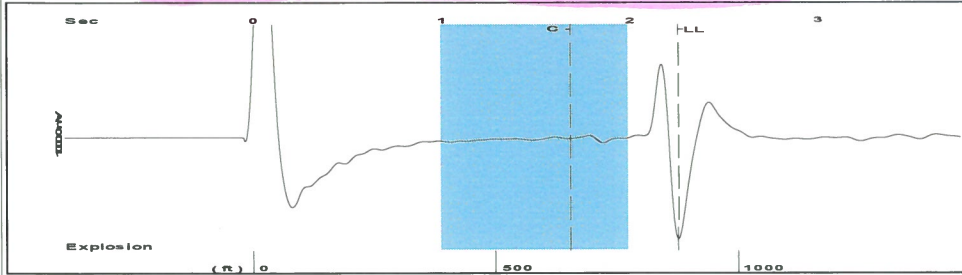
Submitted Electronically

<b>Do NOT Write in This Space - KCC USE ONLY</b>	Date Tested: _____	Results: _____	Date Plugged: _____	Date Repaired: _____	Date Put Back in Service: _____
	Review Completed by: _____ Comments: _____				
TA Approved: <input type="checkbox"/> Yes <input type="checkbox"/> Denied Date: _____					

**Mail to the Appropriate KCC Conservation Office:**

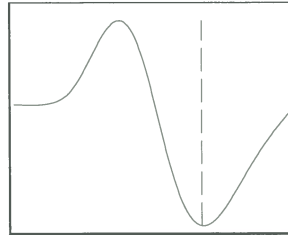
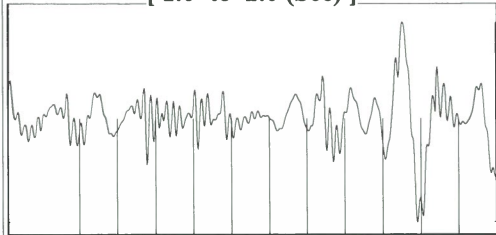
	KCC District Office #1 - 210 E. Frontview, Suite A, Dodge City, KS 67801	Phone 620.225.8888
	KCC District Office #2 / UPGS - 3450 N. Rock Road, Building 600, Suite 601, Wichita, KS 67226	Phone 316.630.4000
	KCC District Office #3 - 1500 SW Seventh Steet, Chanute, KS 66720	Phone 620.432.2300
	KCC District Office #4 - 2301 E. 13th Street, Hays, KS 67601-2651	Phone 785.625.0550

Group: TA'D WELLS Well: SWLVLU 20 (acquired on: 05/04/16 12:39:08 )



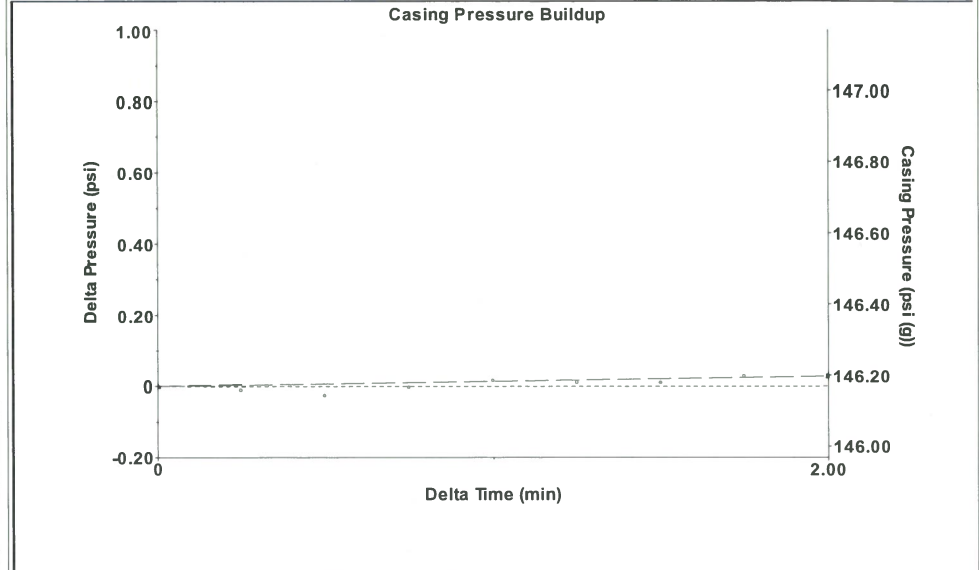
Filter Type High Pass Automatic Collar Count Yes Time 2.254 sec  
 Manual Acoustic Velo 815.959 ft/s Manual JTS/sec 12.87 Joints 27.6225 Jts  
 Depth 875.63 ft

[ 1.0 to 2.0 (Sec) ]



Analysis Method: Automatic

Group: TA'D WELLS Well: SWLVLU 20 (acquired on: 05/04/16 12:39:08 )



Change in Pressure 0.03 psi PT9424  
 Change in Time 2.00 min Range 0 - ? psi

Group: TA'D WELLS Well: SWLVLU 20 (acquired on: 05/04/16 12:39:08 )

Production  
 Current Potential  
 Oil - \* - - \* - BBL/D  
 Water - \* - - \* - BBL/D  
 Gas - \* - - \* - Mscf/D

IPR Method Vogel  
 PBHP/SBHP - \* -  
 Production Efficiency 0.0

Oil 40 deg.API  
 Water 1.05 Sp.Gr.H2O  
 Gas 1.13 Sp.Gr.AIR

Acoustic Velocity 776.961 ft/s

Casing Pressure 146.2 psi (g)  
 Casing Pressure Buildup 2.00 min  
 Gas/Liquid Interface Pressure 152.4 psi (g)  
 Liquid Level Depth 875.63 ft  
 Pump Intake Depth 4316.00 ft  
 Formation Depth 4400.00 ft

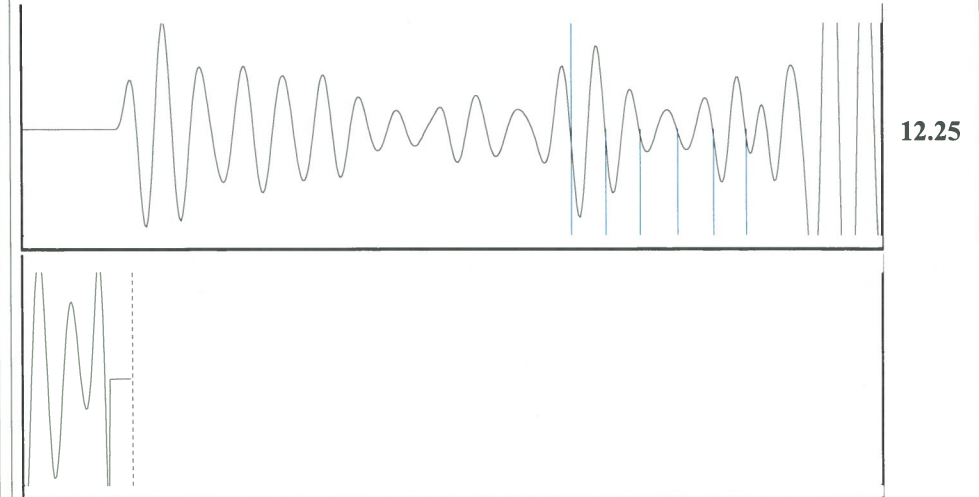


Producing  
 Annular Gas Flow 0 Mscf/D  
 % Liquid 100 %  
 Pump Intake 1237.3 psi (g)  
 Producing BHP 1275.5 psi (g)  
 Static BHP - \* - psi (g)

Formation Submergence  
 Total Gaseous Liquid Column HT (TVD) 3440 ft  
 Equivalent Gas Free Liquid HT (TVD) 3440 ft

Acoustic Test

Group: TA'D WELLS Well: SWLVLU 20 (acquired on: 05/04/16 12:39:08 )



Acoustic Velocity 776.961 ft/s Joints counted 5  
 Joints Per Second 12.2549 jts/sec Joints to liquid level 27.6225  
 Depth to liquid level 875.635 ft Filter Width 10.87 14.87  
 Automatic Collar Count Yes Time to 1st Collar 1.276 1.684

Conservation Division  
District Office No. 1  
210 E. Frontview, Suite A  
Dodge City, KS 67801



Phone: 620-225-8888  
Fax: 620-225-8885  
<http://kcc.ks.gov/>

Jay Scott Emler, Chairman  
Shari Feist Albrecht, Commissioner  
Pat Apple, Commissioner

Sam Brownback, Governor

May 10, 2016

Katherine McClurkan  
Merit Energy Company, LLC  
13727 Noel Road, Suite 1200  
Dallas, TX 75240

Re: Temporary Abandonment  
API 15-081-21737-00-00  
SWLVLU 20  
NW/4 Sec.30-30S-33W  
Haskell County, Kansas

Dear Katherine McClurkan:

"Your temporary abandonment (TA) application for the well listed above has been approved. In accordance with K.A.R. 82-3-111 the TA status of this well will expire 05/10/2017.

- \* If you return this well to service or plug it, please notify the District Office.
- \* If you sell this well you are required to file a Transfer of Operator form, T-1.
- \* If the well will remain temporarily abandoned, you must submit a new TA application, CP-111, before 05/10/2017.

You may contact me at the number above if you have questions.

Very truly yours,

Michael Maier"