

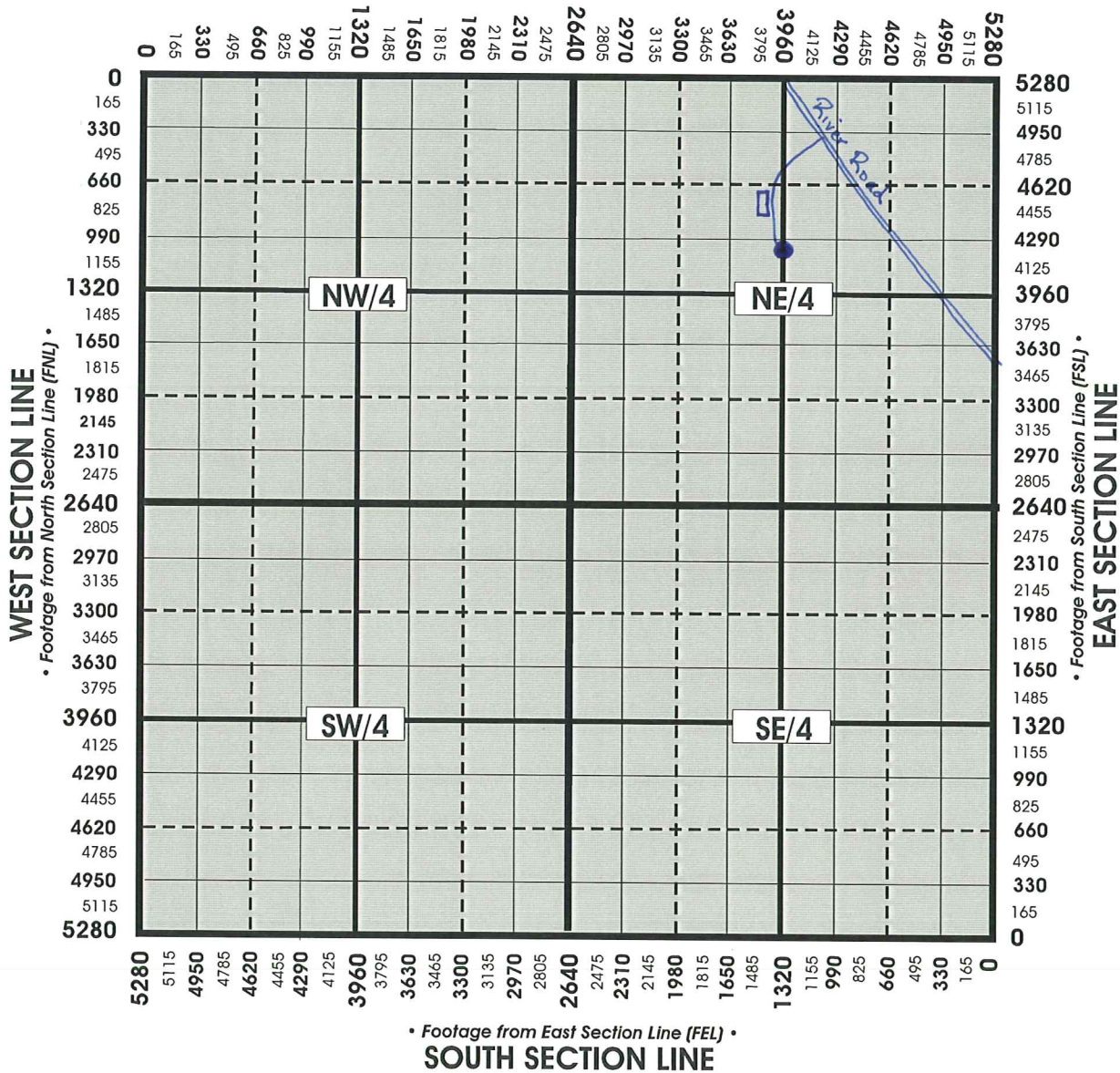
Tom #1

Independent Oil & Gas Service, Inc. - Wichita, KS.  
www.iogsi.com

TYPICAL REGULAR SECTION OF LAND IN KANSAS  
(1 mile x 1 mile sq, or 1 mile = 5280 ft)

### NORTH SECTION LINE

• Footage from West Section Line (FWL) •



S31-T31S-R12W