

Marc A. Downing		Geologic Report			
Consulting Petroleum Geologist		Drilling Time and Sample Log			
Operator Downing-Nelson Oil Co., Inc.			Elevation KB 1932		
Lease Brack No. 1-24			DF 1924 GL 1924		
API # 15-165-22125-0000			Casing Record Surface 8 5/8" @ 937'		
Field Otis-Albert			Production None		
Location 618' FSL & 982' FWL			Electrical Surveys None		
Sec. 24	Twp. 18s	Rge. 16w			
County Rush		State Kansas			
Formation	Sample tops	Log Tops	Datum	Struct Comp	
Top Anhydrite	942		+990	+16	
Base Anhydrite	NA		NA	NA	
<hr/>					
Topeka	2916		-984	NA	
Heebner	3161		-1229	NA	
Toronto	3179		-1247	NA	
Douglas Sh	3197		-1265	NA	
Brown Lime	3229		-1297	NA	
LKC	3243		-1311	NA	
BKC	3456		-1524	NA	
Reagan Sand	3491		-1559	+3	
Total Depth	3568		-1636		
<hr/>					
Reference Well For Structural Comparison	Ohio Oil SW SW		Sec. 24-18s-15w		

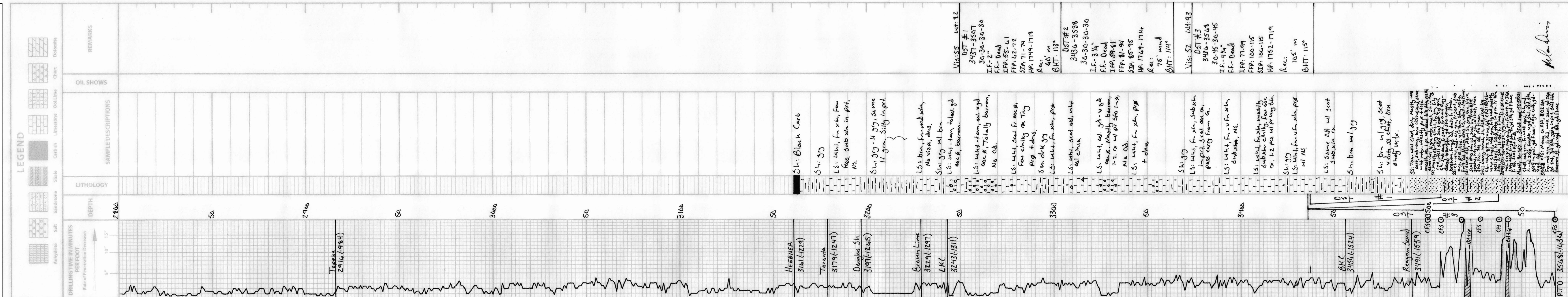
Drilling Contractor	Integrity Drilling, Rig #7		
Commenced	3-24-16	Completed	4-2-16
Samples Saved From	3150 To	RTD	
Drilling Time Kept From	2800 To	RTD	
Samples Examined From	3150 To	RTD	
Geological Supervision From	2800 To	RTD	

Summary and Recommendations

The Brack #1-24 was structurally high to nearby old producers and had good sample shows throughout most of the Reagan Sand. DST evaluation showed poor shut-in pressures due to depletion. Decision was made to plug and abandon.

Respectfully Submitted,

Marc A. Downing



M.A. Downing