

**LEGEND:**

- ◻ = 90° SYMBOL
- = PROPOSED WELLHEAD.
- ▲ = SECTION CORNERS LOCATED.
- \* = EXISTING WELLS

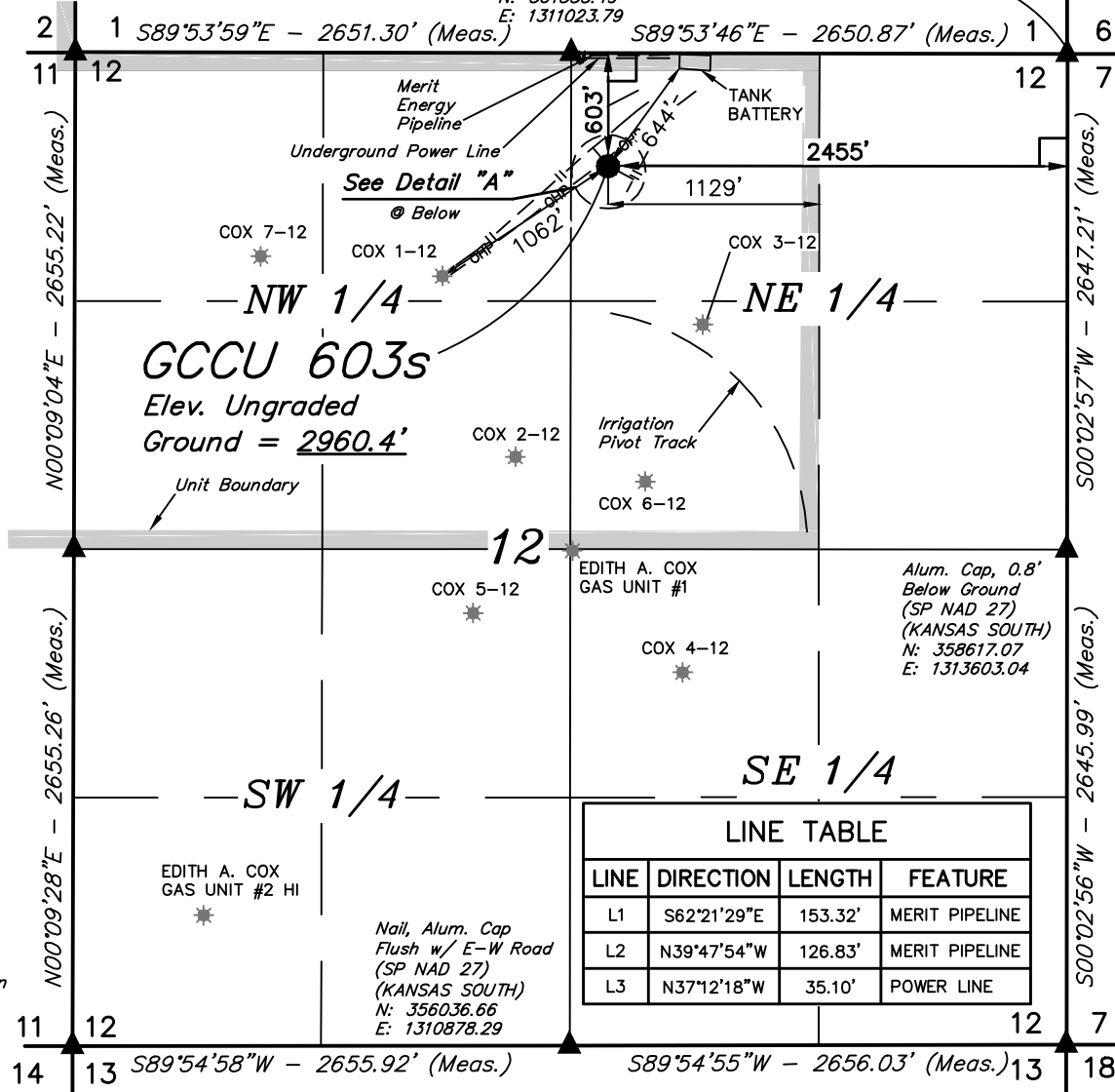
Pipe, 0.5'  
Below Road Intersection  
(SP NAD 27)  
(KANSAS SOUTH)  
N: 361408.04  
E: 1308374.01

# T28S, R33W, 6th P.M.

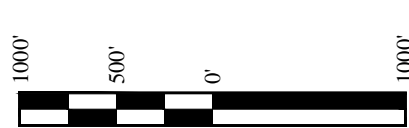
Alum. Cap, 0.8'  
Below E-W Road  
(SP NAD 27)  
(KANSAS SOUTH)  
N: 361335.49  
E: 1311023.79

Alum. Cap, 0.3'  
Below Road Intersection  
(SP NAD 27)  
(KANSAS SOUTH)  
N: 361262.79  
E: 1313673.12

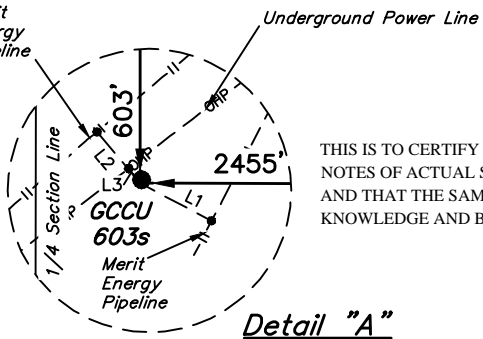
R 33  
W 32  
W 6  
W 7



LINE TABLE			
LINE	DIRECTION	LENGTH	FEATURE
L1	S62°21'29"E	153.32'	MERIT PIPELINE
L2	N39°47'54"W	126.83'	MERIT PIPELINE
L3	N37°12'18"W	35.10'	POWER LINE



<b>NAD 83 (SURFACE LOCATION)</b>
LATITUDE = 37°37'59.72" (37.633256)
LONGITUDE = 100°52'45.34" (100.879261)
<b>NAD 27 (SURFACE LOCATION)</b>
LATITUDE = 37°37'59.64" (37.633233)
LONGITUDE = 100°52'43.75" (100.878819)
<b>STATE PLANE NAD 83 (KANSAS SOUTH)</b>
N: 1673080.41 E: 623426.74
<b>STATE PLANE NAD 27 (KANSAS SOUTH)</b>
N: 360727.05 E: 1311204.05



**Detail "A"**  
No Scale

CERTIFICATE

THIS IS TO CERTIFY THAT THE ABOVE PLAT WAS PREPARED FROM FIELD NOTES OF ACTUAL SURVEYS MADE BY ME OR UNDER MY SUPERVISION AND THAT THE SAME ARE TRUE AND CORRECT TO THE BEST OF MY KNOWLEDGE AND BELIEF.

**JUSTIN L. GIBBS**  
REGISTERED LAND SURVEYOR  
REGISTRATION NO. 435  
STATE OF KANSAS 04-04-16

**BASIS OF BEARINGS**  
BASIS OF BEARINGS IS A G.P.S. OBSERVATION

**BASIS OF ELEVATION**  
THE BASIS OF ELEVATION, ELEV: 2943.84' WAS DERIVED FROM AN OPUS SOLUTION AT LAT: 37°33'17.64" LONG: 100°53'21.35" AND HAS A DATUM OF NAVD88.



**MERIT ENERGY COMPANY**

GCCU 603s  
603' FNL 2455' FEL  
NW 1/4 NE 1/4, SECTION 12, T28S R33W, 6th P.M.  
HASKELL COUNTY, KANSAS

<b>SURVEYED BY</b>	J.P.	03-31-16	<b>SCALE</b>
<b>DRAWN BY</b>	C.D.	04-04-16	1" = 1000'

**WELL LOCATION PLAT**



**UELS, LLC**  
Corporate Office \* 85 South 200 East  
Vernal, UT 84078 \* (435) 789-1017