



TRILOBITE TESTING, INC.

DRILL STEM TEST REPORT

Blue Goose Drilling Co., Inc.

S5-20s-26w Ness/KS

POB 1413
Great Bend, KS 67530

Stiawalt #4

Job Ticket: 64503

DST#: 1

ATTN: Ken Wallace

Test Start: 2016.02.17 @ 21:25:00

GENERAL INFORMATION:

Formation: **Cherokee Sand**

Deviated: No Whipstock: ft (KB)

Time Tool Opened: 23:30:40

Time Test Ended: 04:42:39

Test Type: Conventional Bottom Hole (Initial)

Tester: Chuck Smith

Unit No: 81

Interval: 4562.00 ft (KB) To 4604.00 ft (KB) (TVD)

Total Depth: 4604.00 ft (KB) (TVD)

Hole Diameter: 7.88 inches Hole Condition: Good

Reference Elevations: 2639.00 ft (KB)

2630.00 ft (CF)

KB to GR/CF: 9.00 ft

Serial #: 8357

Inside

Press @ Run Depth: 1401.52 psig @ 4569.00 ft (KB)

Start Date: 2016.02.17

End Date: 2016.02.18

Start Time: 21:25:02

End Time: 04:42:40

Capacity: 8000.00 psig

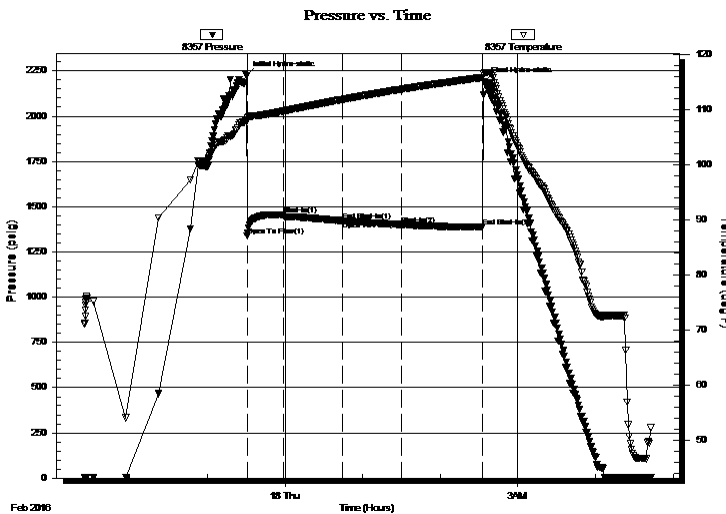
Last Calib.: 2016.02.18

Time On Btm: 2016.02.17 @ 23:30:10

Time Off Btm: 2016.02.18 @ 02:34:00

TEST COMMENT: 30- 1/2" Blow .
45- No return.
45- Surface blow after 20 minutes throughout.
60- No return.

PRESSURE SUMMARY



Time (Min.)	Pressure (psig)	Temp (deg F)	Annotation
0	2222.00	108.16	Initial Hydro-static
1	1340.35	108.01	Open To Flow (1)
29	1453.82	109.72	Shut-In(1)
75	1422.30	111.84	End Shut-In(1)
75	1422.19	111.85	Open To Flow (2)
120	1401.52	113.69	Shut-In(2)
183	1387.68	115.84	End Shut-In(2)
184	2193.24	116.72	Final Hydro-static

Recovery

Length (ft)	Description	Volume (bbl)
0.00	API: @ Degrees F = .	0.00
0.00	RW: @ Degrees F = PPM	0.00
1.00	M 100m	0.00

Gas Rates

	Choke (inches)	Pressure (psig)	Gas Rate (Mcf/d)



**TRILOBITE
TESTING, INC.**

DRILL STEM TEST REPORT

FLUID SUMMARY

Blue Goose Drilling Co., Inc.

S5-20s-26w Ness/KS

POB 1413
Great Bend, KS 67530

Stiawalt #4

Job Ticket: 64503

DST#: 1

ATTN: Ken Wallace

Test Start: 2016.02.17 @ 21:25:00

Mud and Cushion Information

Mud Type: Gel Chem

Cushion Type:

Oil API:

deg API

Mud Weight: 9.00 lb/gal

Cushion Length:

ft

Water Salinity:

ppm

Viscosity: 52.00 sec/qt

Cushion Volume:

bbbl

Water Loss: 7.60 in³

Gas Cushion Type:

Resistivity: 0.00 ohm.m

Gas Cushion Pressure:

psig

Salinity: 2500.00 ppm

Filter Cake: 1.00 inches

Recovery Information

Recovery Table

Length ft	Description	Volume bbbl
0.00	API: @ Degrees F = .	0.000
0.00	RW: @ Degrees F = PPM	0.000
1.00	M 100m	0.005

Total Length: 1.00 ft Total Volume: 0.005 bbl

Num Fluid Samples: 0

Num Gas Bombs: 0

Serial #:

Laboratory Name:

Laboratory Location:

Recovery Comments:

