



## DRILL STEM TEST REPORT

Prepared For: **K&N Petroleum Inc.**

1105 Walnut  
Great Bend KS. 67530

ATTN: Wyatt Urban

**Norman Klepper #36-2**

**36-20s-12w Barton,KS**

Start Date: 2015.11.19 @ 19:02:06

End Date: 2015.11.20 @ 01:06:36

Job Ticket #: 57926                      DST #: 1

Trilobite Testing, Inc  
PO Box 362 Hays, KS 67601  
ph: 785-625-4778 fax: 785-625-5620

Printed: 2015.11.23 @ 09:17:17

K&N Petroleum Inc.

36-20s-12w Barton,KS

Norman Klepper #36-2

DST # 1

LKC A - F

2015.11.19



**TRILOBITE  
TESTING, INC**

# DRILL STEM TEST REPORT

K&N Petroleum Inc.  
1105 Walnut  
Great Bend KS. 67530  
ATTN: Wyatt Urban

**36-20s-12w Barton,KS**  
**Norman Klepper #36-2**  
Job Ticket: 57926 **DST#: 1**  
Test Start: 2015.11.19 @ 19:02:06

## GENERAL INFORMATION:

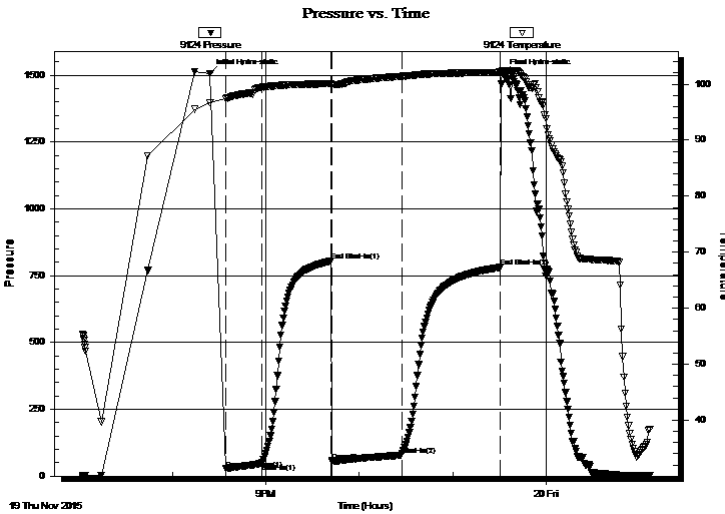
Formation: **LKC A - F**  
 Deviated: No Whipstock: ft (KB)  
 Time Tool Opened: 20:34:06  
 Time Test Ended: 01:06:36  
 Interval: **3248.00 ft (KB) To 3242.00 ft (KB) (TVD)**  
 Total Depth: 3242.00 ft (KB) (TVD)  
 Hole Diameter: 7.88 inches Hole Condition: Fair  
 Test Type: Conventional Bottom Hole (Initial)  
 Tester: Gary Pevoteaux  
 Unit No: 80  
 Reference Elevations: 1825.00 ft (KB)  
 1815.00 ft (CF)  
 KB to GR/CF: 10.00 ft

## Serial #: 9124 Outside

Press@RunDepth: 78.54 psig @ 3149.00 ft (KB)  
 Start Date: 2015.11.19 End Date: 2015.11.20  
 Start Time: 19:02:11 End Time: 01:06:35  
 Capacity: 8000.00 psig  
 Last Calib.: 2015.11.20  
 Time On Btm: 2015.11.19 @ 20:24:06  
 Time Off Btm: 2015.11.19 @ 23:32:21

TEST COMMENT: IF:Strong blow . B.O.B. in 10 mins.  
 IS:Weak blow . 1/4 - 1/2".  
 FF:Strong blow . B.O.B. in 1 min.  
 FS:Weak blow . 1/4".

## PRESSURE SUMMARY



| Time (Min.) | Pressure (psig) | Temp (deg F) | Annotation           |
|-------------|-----------------|--------------|----------------------|
| 0           | 1506.45         | 96.75        | Initial Hydro-static |
| 10          | 27.53           | 97.33        | Open To Flow (1)     |
| 34          | 49.38           | 99.43        | Shut-In(1)           |
| 78          | 805.13          | 100.09       | End Shut-In(1)       |
| 79          | 57.02           | 99.89        | Open To Flow (2)     |
| 123         | 78.54           | 101.39       | Shut-In(2)           |
| 187         | 781.13          | 102.14       | End Shut-In(2)       |
| 189         | 1506.25         | 102.43       | Final Hydro-static   |

## Recovery

| Length (ft) | Description         | Volume (bbl) |
|-------------|---------------------|--------------|
| 0.00        | 756 ft.of GIP       | 0.00         |
| 80.00       | GOCM 46&g 17%o 37%m | 1.12         |
| 63.00       | GOCM 13%g 43%o 44%m | 0.88         |
|             |                     |              |
|             |                     |              |

## Gas Rates

|  | Choke (inches) | Pressure (psig) | Gas Rate (Mcf/d) |
|--|----------------|-----------------|------------------|
|  |                |                 |                  |





**TRILOBITE  
TESTING, INC**

# DRILL STEM TEST REPORT

**TOOL DIAGRAM**

K&N Petroleum Inc.  
1105 Walnut  
Great Bend KS. 67530  
ATTN: Wyatt Urban

**36-20s-12w Barton,KS**  
**Norman Klepper #36-2**  
Job Ticket: 57926 **DST#: 1**  
Test Start: 2015.11.19 @ 19:02:06

**Tool Information**

|                           |                    |                       |                                |                                    |
|---------------------------|--------------------|-----------------------|--------------------------------|------------------------------------|
| Drill Pipe:               | Length: 3148.00 ft | Diameter: 3.80 inches | Volume: 44.16 bbl              | Tool Weight: 2400.00 lb            |
| Heavy Wt. Pipe:           | Length: 0.00 ft    | Diameter: 0.00 inches | Volume: 0.00 bbl               | Weight set on Packer: 24000.00 lb  |
| Drill Collar:             | Length: 0.00 ft    | Diameter: 0.00 inches | Volume: 0.00 bbl               | Weight to Pull Loose: 49000.00 lb  |
|                           |                    |                       | <u>Total Volume: 44.16 bbl</u> | Tool Chased 0.00 ft                |
| Drill Pipe Above KB:      | 20.00 ft           |                       |                                | String Weight: Initial 38000.00 lb |
| Depth to Top Packer:      | 3148.00 ft         |                       |                                | Final 39000.00 lb                  |
| Depth to Bottom Packer:   | ft                 |                       |                                |                                    |
| Interval between Packers: | 94.00 ft           |                       |                                |                                    |
| Tool Length:              | 114.00 ft          |                       |                                |                                    |
| Number of Packers:        | 2                  | Diameter: 6.75 inches |                                |                                    |

Tool Comments:

| <b>Tool Description</b> | <b>Length (ft)</b> | <b>Serial No.</b> | <b>Position</b> | <b>Depth (ft)</b> | <b>Accum. Lengths</b> |
|-------------------------|--------------------|-------------------|-----------------|-------------------|-----------------------|
|-------------------------|--------------------|-------------------|-----------------|-------------------|-----------------------|

|                 |       |      |         |         |                               |
|-----------------|-------|------|---------|---------|-------------------------------|
| Change Over Sub | 1.00  |      |         | 3129.00 |                               |
| Shut In Tool    | 5.00  |      |         | 3134.00 |                               |
| Hydraulic tool  | 5.00  |      |         | 3139.00 |                               |
| Packer          | 4.00  |      |         | 3143.00 | 20.00 Bottom Of Top Packer    |
| Packer          | 5.00  |      |         | 3148.00 |                               |
| Stubb           | 1.00  |      |         | 3149.00 |                               |
| Recorder        | 0.00  | 9124 | Outside | 3149.00 |                               |
| Recorder        | 0.00  | 6798 | Inside  | 3149.00 |                               |
| Perforations    | 6.00  |      |         | 3155.00 |                               |
| Blank Spacing   | 63.00 |      |         | 3218.00 |                               |
| Perforations    | 19.00 |      |         | 3237.00 |                               |
| Bullnose        | 5.00  |      |         | 3242.00 | 94.00 Bottom Packers & Anchor |

**Total Tool Length: 114.00**



**TRILOBITE  
TESTING, INC**

# DRILL STEM TEST REPORT

**FLUID SUMMARY**

K&N Petroleum Inc.  
1105 Walnut  
Great Bend KS. 67530  
ATTN: Wyatt Urban

**36-20s-12w Barton,KS**  
**Norman Klepper #36-2**  
Job Ticket: 57926      **DST#: 1**  
Test Start: 2015.11.19 @ 19:02:06

## Mud and Cushion Information

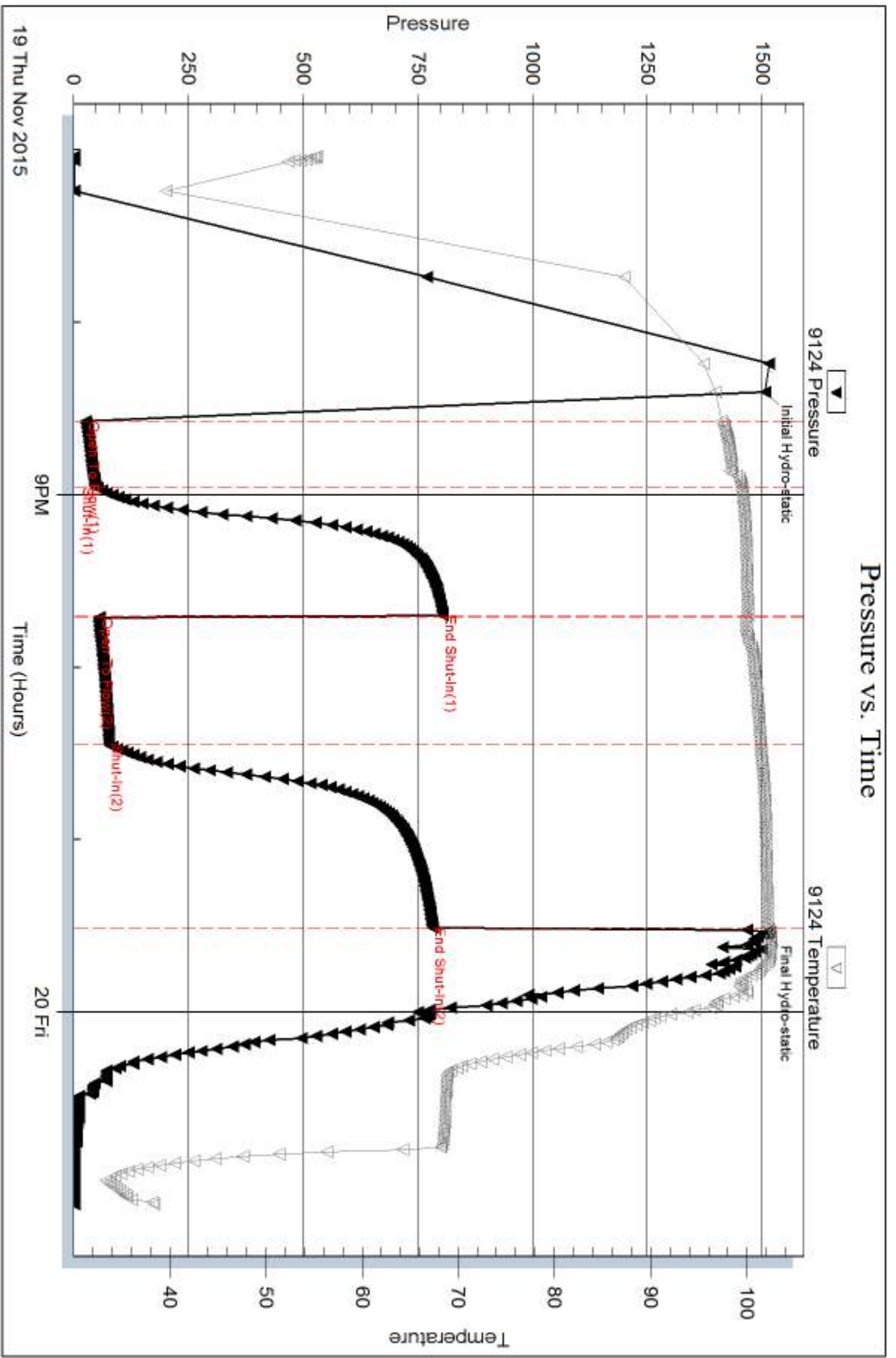
|                                  |                            |                 |          |
|----------------------------------|----------------------------|-----------------|----------|
| Mud Type: Gel Chem               | Cushion Type:              | Oil API:        | deg API  |
| Mud Weight: 9.00 lb/gal          | Cushion Length: ft         | Water Salinity: | 2000 ppm |
| Viscosity: 51.00 sec/qt          | Cushion Volume: bbl        |                 |          |
| Water Loss: 7.98 in <sup>3</sup> | Gas Cushion Type:          |                 |          |
| Resistivity: 0.00 ohm.m          | Gas Cushion Pressure: psig |                 |          |
| Salinity: 2000.00 ppm            |                            |                 |          |
| Filter Cake: 0.20 inches         |                            |                 |          |

## Recovery Information

Recovery Table

| Length<br>ft | Description         | Volume<br>bbl |
|--------------|---------------------|---------------|
| 0.00         | 756 ft.of GIP       | 0.000         |
| 80.00        | GOCM 46&g 17%o 37%m | 1.122         |
| 63.00        | GOCM 13%g 43%o 44%m | 0.884         |

Total Length: 143.00 ft      Total Volume: 2.006 bbl  
Num Fluid Samples: 0      Num Gas Bombs: 0      Serial #: none  
Laboratory Name:      Laboratory Location:  
Recovery Comments:



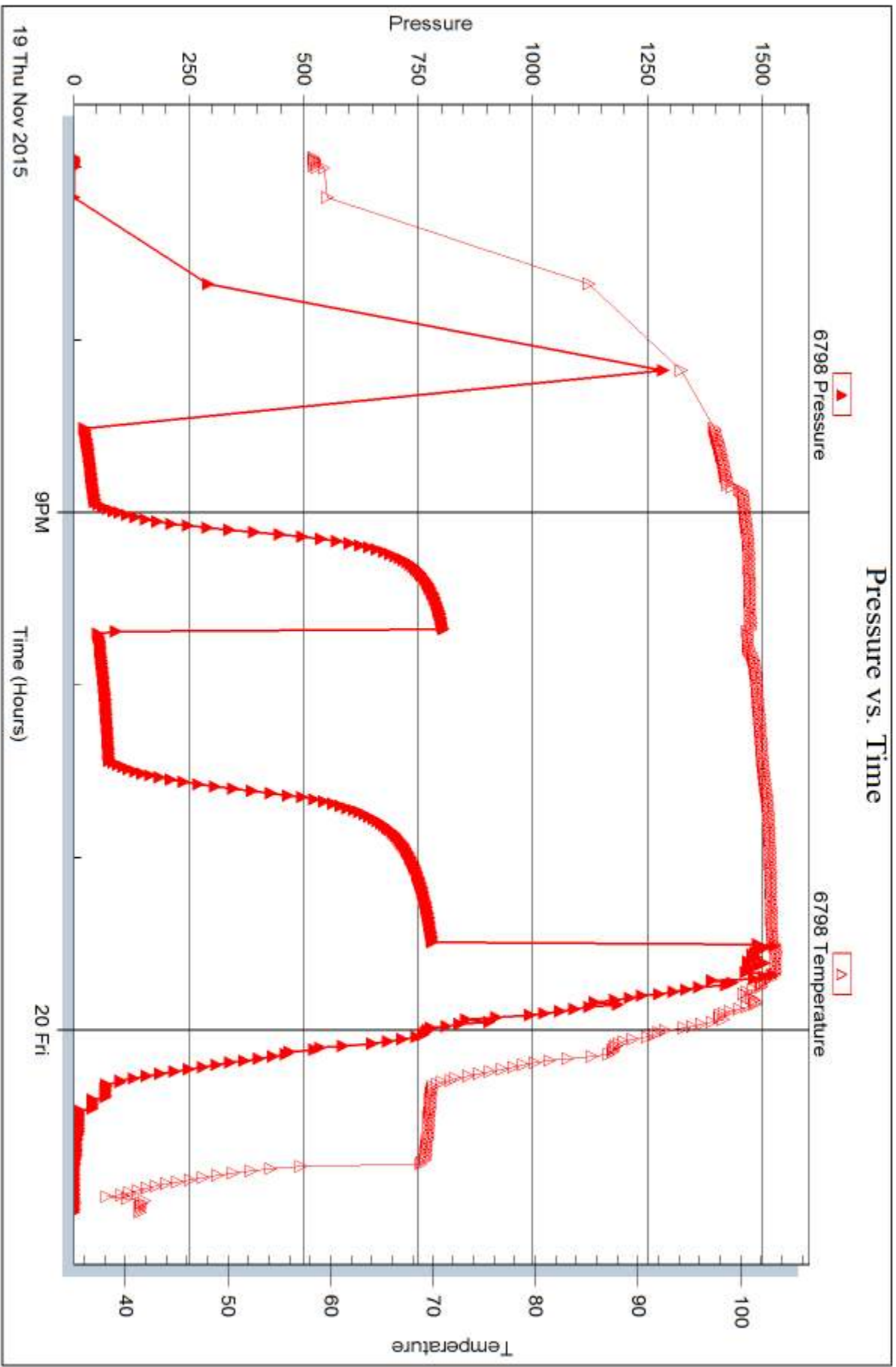
Serial #: 6798

Inside

K&N Petroleum Inc.

Norman Klepper #36-2

DST Test Number: 1





## DRILL STEM TEST REPORT

Prepared For: **K&N Petroleum Inc.**

1105 Walnut  
Great Bend KS. 67530

ATTN: Wyatt Urban

**Norman Klepper #36-2**

**36-20s-12w Barton,KS**

Start Date: 2015.11.20 @ 12:37:53

End Date: 2015.11.20 @ 20:49:08

Job Ticket #: 57927                      DST #: 2

Trilobite Testing, Inc  
PO Box 362 Hays, KS 67601  
ph: 785-625-4778 fax: 785-625-5620

Printed: 2015.11.23 @ 09:25:27





**TRILOBITE TESTING, INC.**

# DRILL STEM TEST REPORT

K&N Petroleum Inc.  
 1105 Walnut  
 Great Bend KS. 67530  
 ATTN: Wyatt Urban

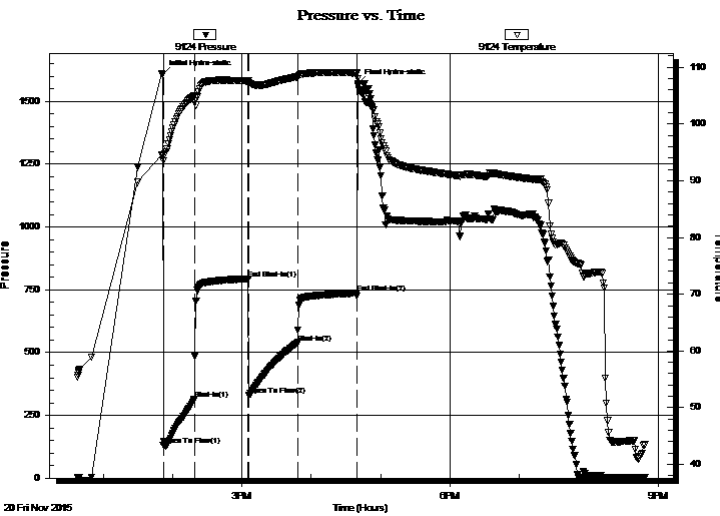
**36-20s-12w Barton,KS**  
**Norman Klepper #36-2**  
 Job Ticket: 57927 **DST#: 2**  
 Test Start: 2015.11.20 @ 12:37:53

## GENERAL INFORMATION:

Formation: **LKC**  
 Deviated: No Whipstock: ft (KB)  
 Time Tool Opened: 13:51:53  
 Time Test Ended: 20:49:08  
 Interval: **3285.00 ft (KB) To 3365.00 ft (KB) (TVD)**  
 Total Depth: 3365.00 ft (KB) (TVD)  
 Hole Diameter: 7.88 inches Hole Condition: Fair  
 Test Type: Conventional Bottom Hole (Reset)  
 Tester: Gary Pevoteaux  
 Unit No: 80  
 Reference Elevations: 1825.00 ft (KB)  
 1815.00 ft (CF)  
 KB to GR/CF: 10.00 ft

**Serial #: 9124 Outside**  
 Press@RunDepth: 539.71 psig @ 3286.00 ft (KB) Capacity: 8000.00 psig  
 Start Date: 2015.11.20 End Date: 2015.11.20 Last Calib.: 2015.11.20  
 Start Time: 12:37:58 End Time: 20:49:07 Time On Btm: 2015.11.20 @ 13:51:08  
 Time Off Btm: 2015.11.20 @ 16:40:38

**TEST COMMENT:** IF:Strong blow . B.O.B. in 48 secs. GTS in 14 mins. (see gas flow report)  
 IS:Strong blow . B.O.B.  
 FF:Strong blow . B.O.B. in 40 secs. Gas rate TSTM  
 FS:Strong blow . B.O.B.



## PRESSURE SUMMARY

| Time (Min.) | Pressure (psig) | Temp (deg F) | Annotation           |
|-------------|-----------------|--------------|----------------------|
| 0           | 1607.96         | 94.56        | Initial Hydro-static |
| 1           | 130.36          | 93.56        | Open To Flow (1)     |
| 28          | 313.83          | 104.95       | Shut-In(1)           |
| 75          | 794.03          | 107.56       | End Shut-In(1)       |
| 75          | 328.82          | 107.33       | Open To Flow (2)     |
| 117         | 539.71          | 108.31       | Shut-In(2)           |
| 168         | 736.94          | 108.95       | End Shut-In(2)       |
| 170         | 1571.18         | 106.92       | Final Hydro-static   |

## Recovery

| Length (ft) | Description         | Volume (bbl) |
|-------------|---------------------|--------------|
| 2085.00     | CGO 41%g 59%o       | 29.25        |
| 120.00      | GMCO 28%g 30%m 42%o | 1.68         |
| 0.00        | GTS                 | 0.00         |
|             |                     |              |
|             |                     |              |

\* Recovery from multiple tests

## Gas Rates

|                | Choke (inches) | Pressure (psig) | Gas Rate (Mcf/d) |
|----------------|----------------|-----------------|------------------|
| First Gas Rate | 0.25           | 2.00            | 26.02            |
| Last Gas Rate  | 0.25           | 2.00            | 26.02            |





**TRILOBITE  
TESTING, INC**

# DRILL STEM TEST REPORT

**TOOL DIAGRAM**

K&N Petroleum Inc.  
1105 Walnut  
Great Bend KS. 67530  
ATTN: Wyatt Urban

**36-20s-12w Barton,KS**  
**Norman Klepper #36-2**  
Job Ticket: 57927      **DST#: 2**  
Test Start: 2015.11.20 @ 12:37:53

**Tool Information**

|                           |                    |                       |                                |                                    |
|---------------------------|--------------------|-----------------------|--------------------------------|------------------------------------|
| Drill Pipe:               | Length: 3276.00 ft | Diameter: 3.80 inches | Volume: 45.95 bbl              | Tool Weight: 2400.00 lb            |
| Heavy Wt. Pipe:           | Length: 0.00 ft    | Diameter: 0.00 inches | Volume: 0.00 bbl               | Weight set on Packer: 24000.00 lb  |
| Drill Collar:             | Length: 0.00 ft    | Diameter: 0.00 inches | Volume: 0.00 bbl               | Weight to Pull Loose: 55000.00 lb  |
|                           |                    |                       | <u>Total Volume: 45.95 bbl</u> | Tool Chased 0.00 ft                |
| Drill Pipe Above KB:      | 11.00 ft           |                       |                                | String Weight: Initial 38000.00 lb |
| Depth to Top Packer:      | 3285.00 ft         |                       |                                | Final 44000.00 lb                  |
| Depth to Bottom Packer:   | ft                 |                       |                                |                                    |
| Interval between Packers: | 80.00 ft           |                       |                                |                                    |
| Tool Length:              | 100.00 ft          |                       |                                |                                    |
| Number of Packers:        | 2                  | Diameter: 6.75 inches |                                |                                    |

Tool Comments:

| <b>Tool Description</b> | <b>Length (ft)</b> | <b>Serial No.</b> | <b>Position</b> | <b>Depth (ft)</b> | <b>Accum. Lengths</b> |
|-------------------------|--------------------|-------------------|-----------------|-------------------|-----------------------|
|-------------------------|--------------------|-------------------|-----------------|-------------------|-----------------------|

|                 |       |      |         |         |                                    |
|-----------------|-------|------|---------|---------|------------------------------------|
| Change Over Sub | 1.00  |      |         | 3266.00 |                                    |
| Shut In Tool    | 5.00  |      |         | 3271.00 |                                    |
| Hydraulic tool  | 5.00  |      |         | 3276.00 |                                    |
| Packer          | 4.00  |      |         | 3280.00 | 20.00      Bottom Of Top Packer    |
| Packer          | 5.00  |      |         | 3285.00 |                                    |
| Stubb           | 1.00  |      |         | 3286.00 |                                    |
| Recorder        | 0.00  | 9124 | Outside | 3286.00 |                                    |
| Recorder        | 0.00  | 6798 | Inside  | 3286.00 |                                    |
| Perforations    | 6.00  |      |         | 3292.00 |                                    |
| Blank Spacing   | 63.00 |      |         | 3355.00 |                                    |
| Perforations    | 5.00  |      |         | 3360.00 |                                    |
| Bullnose        | 5.00  |      |         | 3365.00 | 80.00      Bottom Packers & Anchor |

**Total Tool Length: 100.00**



**TRILOBITE  
TESTING, INC**

# DRILL STEM TEST REPORT

**FLUID SUMMARY**

K&N Petroleum Inc.  
1105 Walnut  
Great Bend KS. 67530  
ATTN: Wyatt Urban

**36-20s-12w Barton,KS**  
**Norman Klepper #36-2**  
Job Ticket: 57927      **DST#: 2**  
Test Start: 2015.11.20 @ 12:37:53

## Mud and Cushion Information

|                                  |                            |                          |
|----------------------------------|----------------------------|--------------------------|
| Mud Type: Gel Chem               | Cushion Type:              | Oil API: 38.1 deg API    |
| Mud Weight: 9.00 lb/gal          | Cushion Length: ft         | Water Salinity: 3000 ppm |
| Viscosity: 50.00 sec/qt          | Cushion Volume: bbl        |                          |
| Water Loss: 8.18 in <sup>3</sup> | Gas Cushion Type:          |                          |
| Resistivity: 0.00 ohm.m          | Gas Cushion Pressure: psig |                          |
| Salinity: 3000.00 ppm            |                            |                          |
| Filter Cake: 0.20 inches         |                            |                          |

## Recovery Information

Recovery Table

| Length<br>ft | Description         | Volume<br>bbl |
|--------------|---------------------|---------------|
| 2085.00      | CGO 41%g 59%o       | 29.247        |
| 120.00       | GMCO 28%g 30%m 42%o | 1.683         |
| 0.00         | GTS                 | 0.000         |

Total Length: 2205.00 ft      Total Volume: 30.930 bbl  
 Num Fluid Samples: 0      Num Gas Bombs: 1      Serial #: gp-2  
 Laboratory Name: Caraway      Laboratory Location: Liberal, KS  
 Recovery Comments:



**TRILOBITE  
TESTING, INC.**

## DRILL STEM TEST REPORT

**GAS RATES**

K&N Petroleum Inc.

**36-20s-12w Barton,KS**

1105 Walnut  
Great Bend KS. 67530

**Norman Klepper #36-2**

Job Ticket: 57927

**DST#: 2**

ATTN: Wyatt Urban

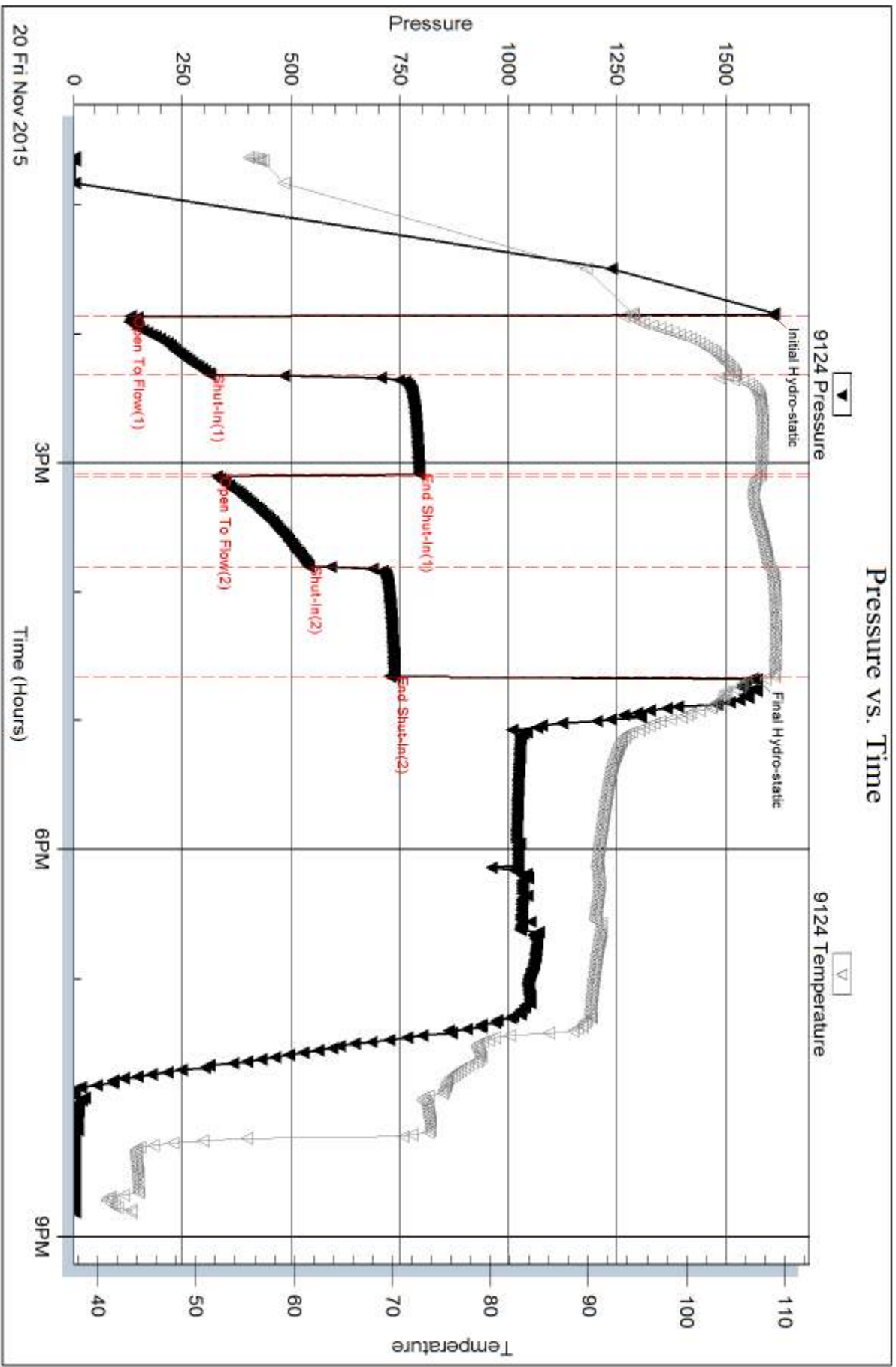
Test Start: 2015.11.20 @ 12:37:53

### Gas Rates Information

Temperature: 59 (deg F)  
Relative Density: 0.65  
Z Factor: 0.8

Gas Rates Table

| Flow Period | Elapsed Time | Choke (inches) | Pressure (psig) | Gas Rate (Mcf/d) |
|-------------|--------------|----------------|-----------------|------------------|
| 1           | 20           | 0.25           | 2.00            | 26.02            |
| 1           | 20           | 0.25           | 2.00            | 26.02            |



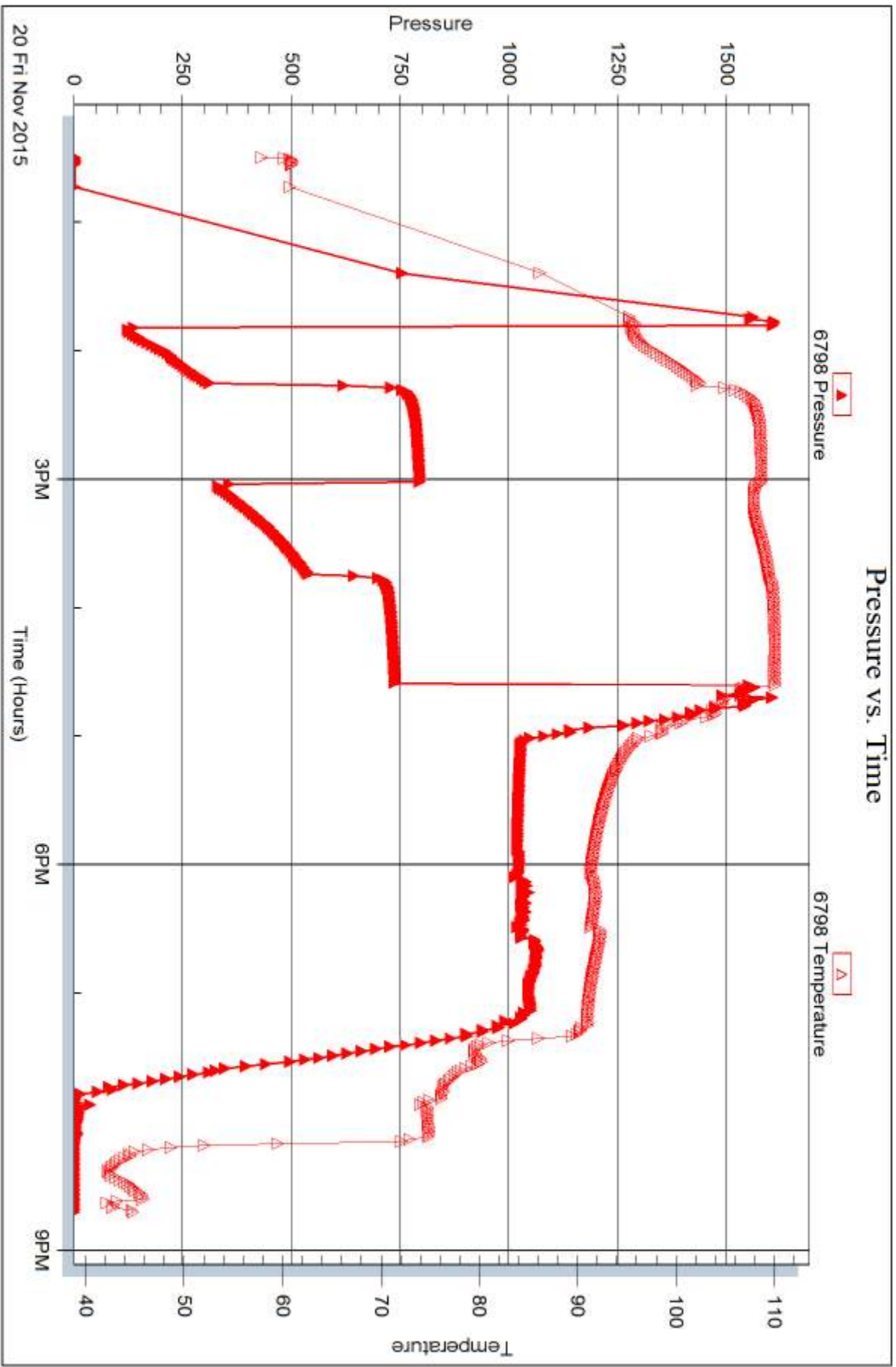
Serial #: 6798

Inside

K&N Petroleum Inc.

Norman Klepper #36-2

DST Test Number: 2



Trilobite Testing, Inc

Ref. No: 57927

Printed: 2015.11.23 @ 09:25:29



## DRILL STEM TEST REPORT

Prepared For: **K&N Petroleum Inc.**

1105 Walnut  
Great Bend KS. 67530

ATTN: Wyatt Urban

**Norman Klepper #36-2**

**36-20s-12w Barton,KS**

Start Date: 2015.11.21 @ 06:39:47

End Date: 2015.11.21 @ 13:55:47

Job Ticket #: 57928                      DST #: 3

Trilobite Testing, Inc  
PO Box 362 Hays, KS 67601  
ph: 785-625-4778 fax: 785-625-5620

Printed: 2015.11.23 @ 09:11:10





**TRILOBITE TESTING, INC**

# DRILL STEM TEST REPORT

K&N Petroleum Inc.  
 1105 Walnut  
 Great Bend KS. 67530  
 ATTN: Wyatt Urban

**36-20s-12w Barton, KS**  
**Norman Klepper #36-2**  
 Job Ticket: 57928 **DST#: 3**  
 Test Start: 2015.11.21 @ 06:39:47

## GENERAL INFORMATION:

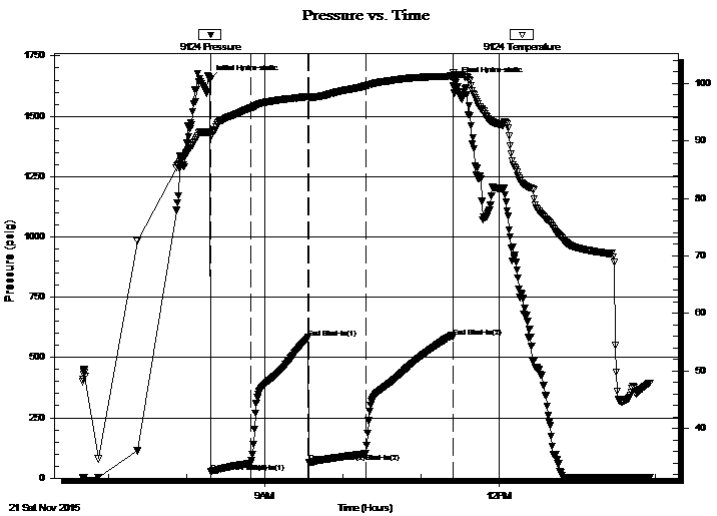
Formation: **Arbuckle**  
 Deviated: No Whipstock: ft (KB)  
 Time Tool Opened: 08:18:32  
 Time Test Ended: 13:55:47  
 Interval: **3356.00 ft (KB) To 3423.00 ft (KB) (TVD)**  
 Total Depth: 3423.00 ft (KB) (TVD)  
 Hole Diameter: 7.88 inches Hole Condition: Fair  
 Test Type: Conventional Bottom Hole (Reset)  
 Tester: Gary Pevoteaux  
 Unit No: 80  
 Reference Elevations: 1825.00 ft (KB)  
 1815.00 ft (CF)  
 KB to GR/CF: 10.00 ft

## Serial #: 9124 Outside

Press@RunDepth: 101.77 psig @ 3357.00 ft (KB) Capacity: 8000.00 psig  
 Start Date: 2015.11.21 End Date: 2015.11.21 Last Calib.: 2015.11.21  
 Start Time: 06:39:52 End Time: 13:55:46 Time On Btm: 2015.11.21 @ 08:17:47  
 Time Off Btm: 2015.11.21 @ 11:26:02

TEST COMMENT: IF: Strong blow . B.O.B. in 7 mins.  
 IS: Weak blow . 1/4".  
 FF: Strong blow . B.O.B. in 7 - 8 mins.  
 FS: Weak blow . 1 - 3"

## PRESSURE SUMMARY



| Time (Min.) | Pressure (psig) | Temp (deg F) | Annotation           |
|-------------|-----------------|--------------|----------------------|
| 0           | 1652.65         | 91.44        | Initial Hydro-static |
| 1           | 25.43           | 90.83        | Open To Flow (1)     |
| 32          | 61.88           | 95.71        | Shut-In(1)           |
| 76          | 582.15          | 97.67        | End Shut-In(1)       |
| 76          | 66.19           | 97.50        | Open To Flow (2)     |
| 120         | 101.77          | 99.55        | Shut-In(2)           |
| 187         | 584.74          | 101.26       | End Shut-In(2)       |
| 189         | 1644.38         | 101.46       | Final Hydro-static   |

## Recovery

| Length (ft) | Description        | Volume (bbl) |
|-------------|--------------------|--------------|
| 0.00        | 1325 ft.of GIP     | 0.00         |
| 230.00      | GMCO 25%g 8%m 67%o | 3.23         |
|             |                    |              |
|             |                    |              |
|             |                    |              |

\* Recovery from multiple tests

## Gas Rates

|  | Choke (inches) | Pressure (psig) | Gas Rate (Mcf/d) |
|--|----------------|-----------------|------------------|
|  |                |                 |                  |





**TRILOBITE  
TESTING, INC**

# DRILL STEM TEST REPORT

**TOOL DIAGRAM**

K&N Petroleum Inc.  
1105 Walnut  
Great Bend KS. 67530  
ATTN: Wyatt Urban

**36-20s-12w Barton,KS**  
**Norman Klepper #36-2**  
Job Ticket: 57928 **DST#: 3**  
Test Start: 2015.11.21 @ 06:39:47

## Tool Information

|                           |                    |                       |                                |                                    |
|---------------------------|--------------------|-----------------------|--------------------------------|------------------------------------|
| Drill Pipe:               | Length: 3369.00 ft | Diameter: 3.80 inches | Volume: 47.26 bbl              | Tool Weight: 2400.00 lb            |
| Heavy Wt. Pipe:           | Length: 0.00 ft    | Diameter: 0.00 inches | Volume: 0.00 bbl               | Weight set on Packer: 24000.00 lb  |
| Drill Collar:             | Length: 0.00 ft    | Diameter: 0.00 inches | Volume: 0.00 bbl               | Weight to Pull Loose: 56000.00 lb  |
|                           |                    |                       | <u>Total Volume: 47.26 bbl</u> | Tool Chased 0.00 ft                |
| Drill Pipe Above KB:      | 33.00 ft           |                       |                                | String Weight: Initial 38000.00 lb |
| Depth to Top Packer:      | 3356.00 ft         |                       |                                | Final 40000.00 lb                  |
| Depth to Bottom Packer:   | ft                 |                       |                                |                                    |
| Interval between Packers: | 67.00 ft           |                       |                                |                                    |
| Tool Length:              | 87.00 ft           |                       |                                |                                    |
| Number of Packers:        | 2                  | Diameter: 6.75 inches |                                |                                    |

Tool Comments:

## Tool Description

| Tool Description | Length (ft) | Serial No. | Position | Depth (ft) | Accum. Lengths                |
|------------------|-------------|------------|----------|------------|-------------------------------|
| Change Over Sub  | 1.00        |            |          | 3337.00    |                               |
| Shut In Tool     | 5.00        |            |          | 3342.00    |                               |
| Hydraulic tool   | 5.00        |            |          | 3347.00    |                               |
| Packer           | 4.00        |            |          | 3351.00    | 20.00 Bottom Of Top Packer    |
| Packer           | 5.00        |            |          | 3356.00    |                               |
| Stubb            | 1.00        |            |          | 3357.00    |                               |
| Recorder         | 0.00        | 9124       | Outside  | 3357.00    |                               |
| Recorder         | 0.00        | 6798       | Inside   | 3357.00    |                               |
| Perforations     | 6.00        |            |          | 3363.00    |                               |
| Blank Spacing    | 32.00       |            |          | 3395.00    |                               |
| Perforations     | 23.00       |            |          | 3418.00    |                               |
| Bullnose         | 5.00        |            |          | 3423.00    | 67.00 Bottom Packers & Anchor |

**Total Tool Length: 87.00**



**TRILOBITE  
TESTING, INC**

# DRILL STEM TEST REPORT

**FLUID SUMMARY**

K&N Petroleum Inc.

**36-20s-12w Barton,KS**

1105 Walnut  
Great Bend KS. 67530

**Norman Klepper #36-2**

Job Ticket: 57928

**DST#: 3**

ATTN: Wyatt Urban

Test Start: 2015.11.21 @ 06:39:47

## Mud and Cushion Information

Mud Type: Gel Chem

Cushion Type:

Oil API:

deg API

Mud Weight: 9.00 lb/gal

Cushion Length:

ft

Water Salinity:

4000 ppm

Viscosity: 49.00 sec/qt

Cushion Volume:

bbbl

Water Loss: 8.79 in<sup>3</sup>

Gas Cushion Type:

Resistivity: 0.00 ohm.m

Gas Cushion Pressure:

psig

Salinity: 4000.00 ppm

Filter Cake: 0.20 inches

## Recovery Information

Recovery Table

| Length<br>ft | Description        | Volume<br>bbl |
|--------------|--------------------|---------------|
| 0.00         | 1325 ft.of GIP     | 0.000         |
| 230.00       | GMCO 25%g 8%m 67%o | 3.226         |

Total Length: 230.00 ft      Total Volume: 3.226 bbl

Num Fluid Samples: 0

Num Gas Bombs: 0

Serial #: none

Laboratory Name:

Laboratory Location:

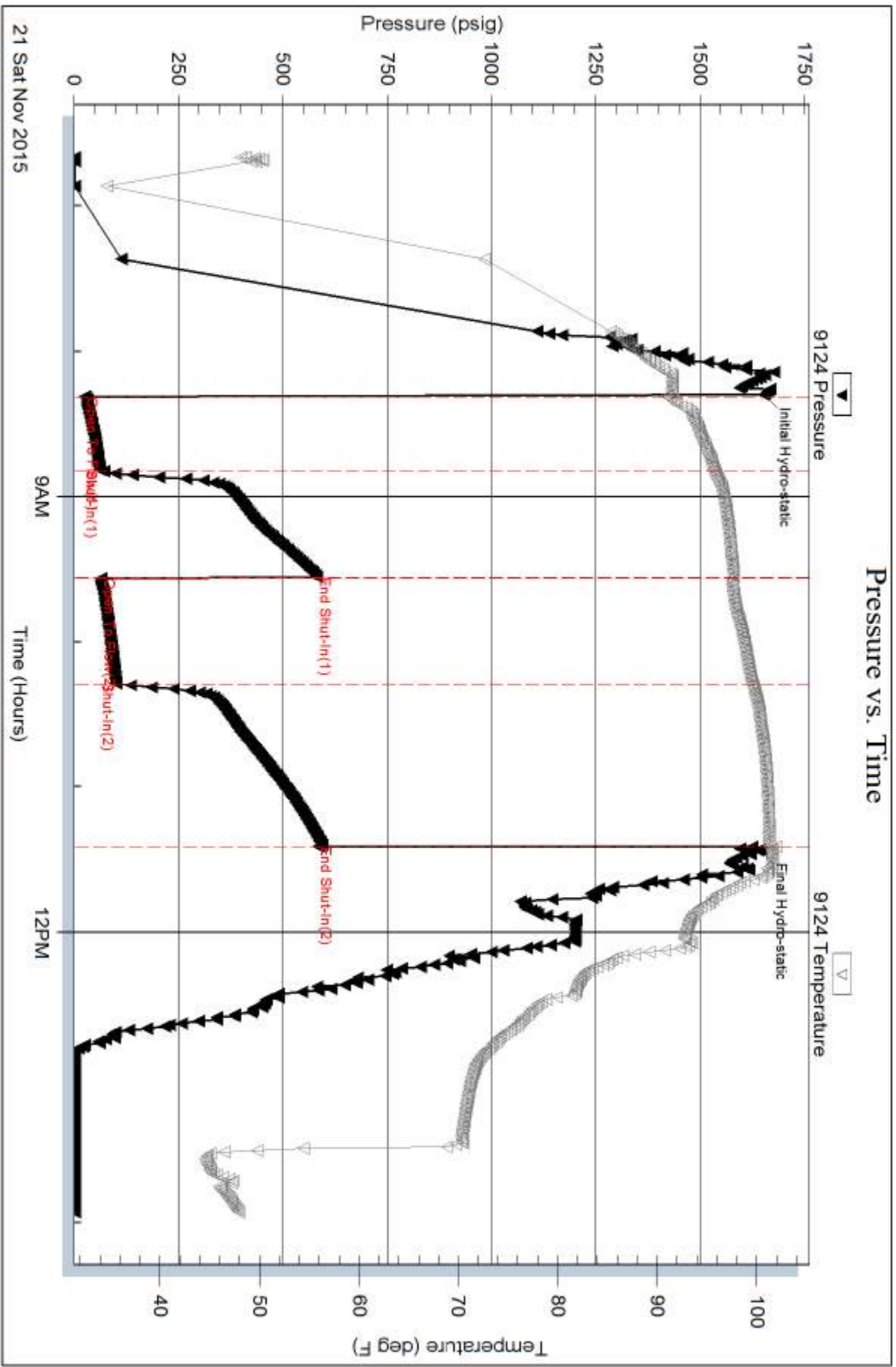
Recovery Comments:

Serial #: 9124

Outside K&N Petroleum Inc.

Norman Klepper #36-2

DST Test Number: 3



Trilobite Testing, Inc

Ref. No: 57928

Printed: 2015.11.23 @ 09:11:11

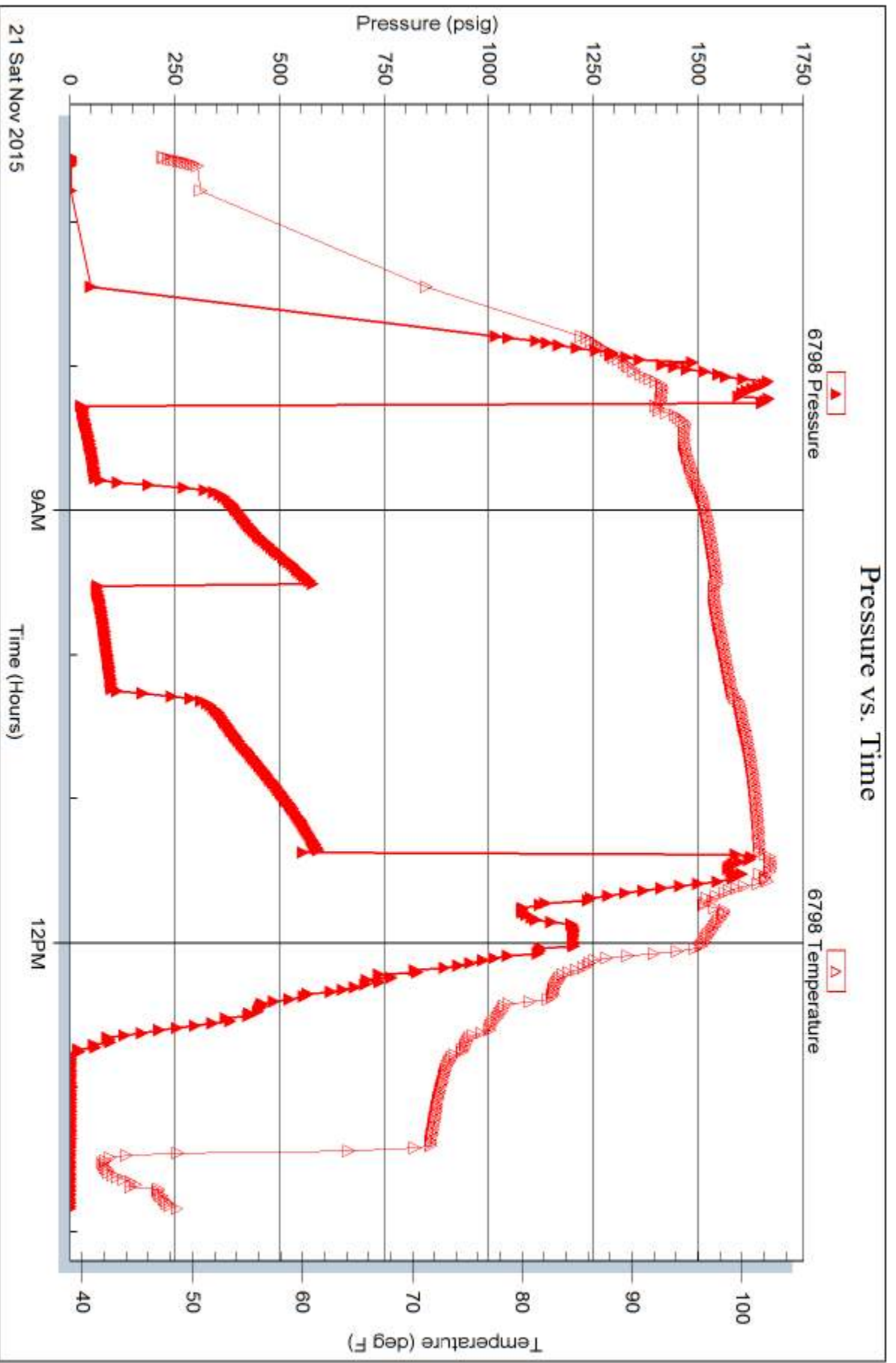
Serial #: 6798

Inside

K&N Petroleum Inc.

Norman Klepper #36-2

DST Test Number: 3



Trilobite Testing, Inc

Ref. No: 57928

Printed: 2015.11.23 @ 09:11:12





# TRILOBITE TESTING INC.

1515 Commerce Parkway • Hays, Kansas 67601

## Test Ticket

NO. 57926

Well Name & No. JORMAN KLEPPER #36-2 Test No. 1 Date 11-19-15  
 Company K & N PETROLEUM INC. Elevation 1825 KB 1815 GL  
 Address 1105 WALNUT, GREAT BEND KS. 67530  
 Co. Rep / Geo. WYATT URBAN Rig SOUTHWIND DRILLING #1  
 Location: Sec. 36 Twp. 20S Rge. 12W Co. BARTON State Ks.

Interval Tested 3148 - 3242' Zone Tested LANS A-F  
 Anchor Length 94' Drill Pipe Run 3148' Mud Wt. 90  
 Top Packer Depth 3143' Drill Collars Run 0 Vis 51  
 Bottom Packer Depth 3148' Wt. Pipe Run 0 WL 8.00  
 Total Depth 3242' Chlorides 2000 ppm System LCM 1#  
 Blow Description IF: Strong below. B.O.B. in 10 mins. FSI: Weak below. 1/4 - 1/2"  
FF: Strong below. B.O.B. in 1 min. FSI: Weak below. 1/4"

| Rec        | Feet of            | %gas      | %oil      | %water    | %mud |
|------------|--------------------|-----------|-----------|-----------|------|
| <u>756</u> | <u>Gas in pipe</u> |           |           |           |      |
| <u>80</u>  | <u>GOCM</u>        | <u>46</u> | <u>17</u> | <u>37</u> |      |
| <u>63</u>  | <u>GOCM</u>        | <u>13</u> | <u>43</u> | <u>44</u> |      |
|            |                    |           |           |           |      |
|            |                    |           |           |           |      |

Rec Total 143 BHT 102° Gravity N/A API RW N.C. @ ~ °F Chlorides 2000 ppm  
 (A) Initial Hydrostatic 1506  Test 1050 T-On Location 1804  
 (B) First Initial Flow 28  Jars \_\_\_\_\_ T-Started 1902  
 (C) First Final Flow 49  Safety Joint \_\_\_\_\_ T-Open 2034 ~~1906~~  
 (D) Initial Shut-In 805  Circ Sub \_\_\_\_\_ T-Pulled 2335  
 (E) Second Initial Flow 57  Hourly Standby \_\_\_\_\_ T-Out 0106  
 (F) Second Final Flow 79  Mileage 104 32 Comments \_\_\_\_\_  
 (G) Final Shut-In 781  Sampler \_\_\_\_\_  
 (H) Final Hydrostatic 1506  Straddle \_\_\_\_\_  Ruined Shale Packer \_\_\_\_\_  
 Shale Packer \_\_\_\_\_  Ruined Packer \_\_\_\_\_  
 Extra Packer \_\_\_\_\_  Extra Copies \_\_\_\_\_  
 Initial Open 30  Extra Recorder \_\_\_\_\_ Sub Total 0  
 Initial Shut-In 45  Day Standby \_\_\_\_\_ Total 1082  
 Final Flow 45  Accessibility \_\_\_\_\_ MP/DST Disc't \_\_\_\_\_  
 Final Shut-In 60 Sub Total 1082

Approved By \_\_\_\_\_ Our Representative [Signature]  
 Trilobite Testing Inc. shall not be liable for damaged of any kind of the property or personnel of the one for whom a test is made, or for any loss suffered or sustained, directly or indirectly, through the use of its equipment, or its statements or opinion concerning the results of any test, tools lost or damaged in the hole shall be paid for at cost by the party for whom the test is made.



# TRILOBITE TESTING INC.

1515 Commerce Parkway • Hays, Kansas 67601

## Test Ticket

NO. 57927

4/10

Well Name & No. NORMAN KLEPPER # 36-2 Test No. 2 Date 11-20-15  
 Company K&N PETROLEUM INC. Elevation 1825 KB 1815 GL  
 Address 1105 WALNUT, GREAT BEND, KS. 67530  
 Co. Rep / Geo. WYATT URBAN Rig SOUTHWIND DRIG. #1  
 Location: Sec. 36 Twp. 20<sup>S</sup> Rge. 12<sup>W</sup> Co. BARTON State KS.

Interval Tested 3285 - 3365 Zone Tested LANS.  
 Anchor Length 80' Drill Pipe Run 3276' Mud Wt. 9.2  
 Top Packer Depth 3280 Drill Collars Run 0 Vis 50  
 Bottom Packer Depth 3285 Wt. Pipe Run 0 WL 82cc  
 Total Depth 3365 Chlorides 3000 ppm System LCM #

Blow Description IF: Strong blow. B.O.B. in 48 secs. GTS in 14 mins. (see gas volume report)  
ISI: Strong blow. B.O.B.  
FF: Strong blow. B.O.B. in 40 secs. Gas flow rate TSTM  
FSI: Strong blow. B.O.B.

| Rec  | Feet of         | %gas | %oil | %water | %mud |
|------|-----------------|------|------|--------|------|
| 2085 | Chen gassey Oil | 41   | 59   |        |      |
| 120  | GMCO            | 28   | 42   | 30     |      |
|      |                 |      |      |        |      |
|      |                 |      |      |        |      |
|      |                 |      |      |        |      |

Rec Total 2205 Fluid BHT 109° Gravity 38.1 API RW N.C. @ ° F Chlorides 3000 ppm

|                         |             |   |                |  |             |
|-------------------------|-------------|---|----------------|--|-------------|
| (A) Initial Hydrostatic | <u>1608</u> | <input checked="" type="checkbox"/> Test    | <u>1050</u>    | T-On Location                                | <u>1218</u> |
| (B) First Initial Flow  | <u>130</u>  | <input type="checkbox"/> Jars               |                | T-Started                                    | <u>1237</u> |
| (C) First Final Flow    | <u>314</u>  | <input type="checkbox"/> Safety Joint       |                | T-Open                                       | <u>1351</u> |
| (D) Initial Shut-In     | <u>294</u>  | <input type="checkbox"/> Circ Sub           |                | T-Pulled                                     | <u>1639</u> |
| (E) Second Initial Flow | <u>329</u>  | <input type="checkbox"/> Hourly Standby     |                | T-Out  | <u>2049</u> |
| (F) Second Final Flow   | <u>540</u>  | <input checked="" type="checkbox"/> Mileage | <u>1049</u> 32 | Comments                                     |             |
| (G) Final Shut-In       | <u>137</u>  | <input type="checkbox"/> Sampler            |                |  |             |
| (H) Final Hydrostatic   | <u>1571</u> | <input type="checkbox"/> Straddle           |                | <input type="checkbox"/> Ruined Shale Packer |             |

Initial Open 30  
 Initial Shut-In 45  
 Final Flow 45  
 Final Shut-In 45

Shale Packer  
 Extra Packer  
 Extra Recorder  
 Day Standby  
 Accessibility

Sub Total 1082

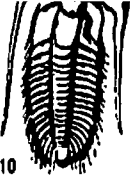
Total 1082

MP/DST Disc't \_\_\_\_\_

Approved By \_\_\_\_\_ Our Representative Wyatt Urban

Trilobite Testing Inc. shall not be liable for damaged of any kind of the property or personnel of the one for whom a test is made, or for any loss suffered or sustained, directly or indirectly, through the use of its equipment, or its statements or opinion concerning the results of any test, tools lost or damaged in the hole shall be paid for at cost by the party for whom the test is made.





# TRILOBITE TESTING INC.

1515 Commerce Parkway • Hays, Kansas 67601

## Test Ticket

NO. 57928

4/10

Well Name & No. NORMAN KLEPPER #36-2 Test No. 3 Date 11-21-15  
 Company KEN PETROLEUM INC. Elevation 1825 KB 1815 GL  
 Address 1105 WALNUT, GREAT BEND KS. 67530  
 Co. Rep / Geo. WYATT URBAN Rig SOUTHWIND DRIG. #1  
 Location: Sec. 36 Twp. 20S Rge. 12W Co. BARTON State Ks.

Interval Tested 3356 - 3423' Zone Tested ARBUCKLE  
 Anchor Length 67' Drill Pipe Run 3369' Mud Wt. 9.2  
 Top Packer Depth 3351' Drill Collars Run 0 Vis 49  
 Bottom Packer Depth 3356' Wt. Pipe Run 0 WL 0.8 cc  
 Total Depth 3423' Chlorides 4,000 ppm System LCM 1#  
 Blow Description IF: Strong blow. B.O.B. in 7 mins. IST: Weak blow. 1/4"

FF: Strong blow. B.O.B. in 7-8 mins. FST: Weak blow. 1-3"

| Rec         | Feet of            | %gas      | %oil      | %water   | %mud |
|-------------|--------------------|-----------|-----------|----------|------|
| <u>1325</u> | <u>Gas in pipe</u> |           |           |          |      |
| <u>230</u>  | <u>GMCO</u>        | <u>25</u> | <u>67</u> | <u>8</u> |      |
|             |                    |           |           |          |      |
|             |                    |           |           |          |      |
|             |                    |           |           |          |      |

Rec Total 230 Fluid BHT 101° Gravity N/C API RW N.C. @ ~ °F Chlorides 4,000 ppm  
 (A) Initial Hydrostatic 1653  Test 1050 T-On Location 0611  
 (B) First Initial Flow 25  Jars \_\_\_\_\_ T-Started 0639  
 (C) First Final Flow 62  Safety Joint \_\_\_\_\_ T-Open 0818  
 (D) Initial Shut-In 582  Circ Sub 50 T-Pulled 1120  
 (E) Second Initial Flow 66  Hourly Standby \_\_\_\_\_ T-Out 1355  
 (F) Second Final Flow 102  Mileage 104.7 32 Comments \_\_\_\_\_  
 (G) Final Shut-In 585  Sampler \_\_\_\_\_  
 (H) Final Hydrostatic 1644  Straddle \_\_\_\_\_  Ruined Shale Packer \_\_\_\_\_  
 Shale Packer \_\_\_\_\_  Ruined Packer \_\_\_\_\_  
 Extra Packer \_\_\_\_\_  Extra Copies \_\_\_\_\_  
 Extra Recorder \_\_\_\_\_ Sub Total 0  
 Day Standby \_\_\_\_\_ Total 1132  
 Accessibility \_\_\_\_\_ MR/DST Disc't \_\_\_\_\_  
 Sub Total 1132

Initial Open 30  
 Initial Shut-In 45  
 Final Flow 45  
 Final Shut-In 60

Approved By \_\_\_\_\_ Our Representative Gary Swanson

Trilobite Testing Inc. shall not be liable for damaged of any kind of the property or personnel of the one for whom a test is made, or for any loss suffered or sustained, directly or indirectly, through the use of its equipment, or its statements or opinion concerning the results of any test, tools lost or damaged in the hole shall be paid for at cost by the party for whom the test is made.