



DRILL STEM TEST REPORT

Prepared For: **Shelby Resources LLC**

621 17th Street SUITE 1155
Denver Colorado 80293

ATTN: Keith Revis

FRANCIS 1-36

36-321s-17w PAWNEE

Start Date: 2016.03.22 @ 04:41:00

End Date: 2016.03.22 @ 09:02:00

Job Ticket #: 01219 DST #: 3

Eagle Testers
1309 Patton Road Great Bend, Kansas 67530
620-791-7394

Printed: 2016.03.22 @ 09:18:26



DRILL STEM TEST REPORT

Shelby Resources LLC
 621 17th Street SUITE 1155
 Denver Colorado 80293
 ATTN: Keith Revis

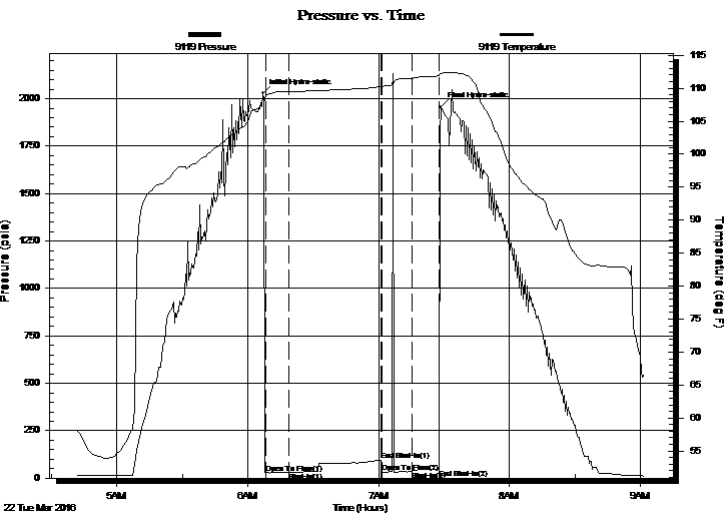
36-321s-17w PAWNEE
FRANCIS 1-36
 Job Ticket: 01219 **DST#: 3**
 Test Start: 2016.03.22 @ 04:41:00

GENERAL INFORMATION:

Formation: **SIMPSON SAND**
 Deviated: No Whipstock: ft (KB)
 Time Tool Opened: 06:08:00
 Time Test Ended: 09:02:00
 Interval: **3890.00 ft (KB) To 3895.00 ft (KB) (TVD)**
 Total Depth: 3895.00 ft (KB) (TVD)
 Hole Diameter: 7.88 inches Hole Condition: Fair
 Test Type: Conventional Bottom Hole (Initial)
 Tester: GENE BUDIG
 Unit No:
 Reference Elevations: 1982.00 ft (KB)
 1971.00 ft (CF)
 KB to GR/CF: 11.00 ft

Serial #: 9119 Inside
 Press@RunDepth: 47.00 psia @ 3890.00 ft (KB) Capacity: 5000.00 psia
 Start Date: 2016.03.22 End Date: 2016.03.22 Last Calib.: 2016.03.22
 Start Time: 04:41:00 End Time: 09:02:00 Time On Btm: 2016.03.22 @ 06:07:00
 Time Off Btm: 2016.03.22 @ 07:28:30

TEST COMMENT: 1st OPENING 10 MINUTES VERY WEAK BLOW FOR 10 MINUTWESMAND DIED
 1st SHUT-IN 45 MINUTES NOI BLOW BACK
 2nd OPENING 10 MINUTES-3-4 BUBBLES DEAD FLUSHED TOOL GOOD SURGEW NO HELP
 2nd SHUT-IN 15 MINUTES NO BLOW BACK



PRESSURE SUMMARY

Time (Min.)	Pressure (psia)	Temp (deg F)	Annotation
0	2028.69	108.31	Initial Hydro-static
2	27.41	108.96	Open To Flow (1)
12	31.20	109.50	Shut-In(1)
54	92.32	110.21	End Shut-In(1)
55	30.22	110.21	Open To Flow (2)
69	37.86	111.48	Shut-In(2)
81	47.00	111.86	End Shut-In(2)
82	1955.59	112.28	Final Hydro-static

Recovery

Length (ft)	Description	Volume (bbl)
5.00	DRILLING MUD WITH A SLIGHT	0.02
0.00	SHOW OF OIL BETWEEN THE TOOLS	0.00

Gas Rates

Choke (inches)	Pressure (psia)	Gas Rate (Mcf/d)



DRILL STEM TEST REPORT

Shelby Resources LLC
 621 17th Street SUITE 1155
 Denver Colorado 80293
 ATTN: Keith Revis

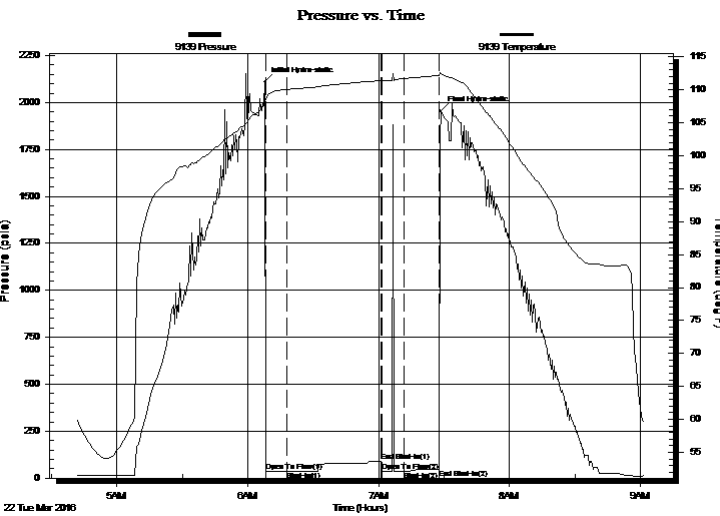
36-321s-17w PAWNEE
FRANCIS 1-36
 Job Ticket: 01219 **DST#: 3**
 Test Start: 2016.03.22 @ 04:41:00

GENERAL INFORMATION:

Formation: **SIMPSON SAND**
 Deviated: No Whipstock: ft (KB)
 Time Tool Opened: 06:08:00
 Time Test Ended: 09:02:00
 Interval: **3890.00 ft (KB) To 3895.00 ft (KB) (TVD)**
 Total Depth: 3895.00 ft (KB) (TVD)
 Hole Diameter: 7.88 inches Hole Condition: Fair
 Test Type: Conventional Bottom Hole (Initial)
 Tester: GENE BUDIG
 Unit No:
 Reference Elevations: 1982.00 ft (KB)
 1971.00 ft (CF)
 KB to GR/CF: 11.00 ft

Serial #: 9139 Outside
 Press@RunDepth: 48.71 psia @ 3890.00 ft (KB) Capacity: 5000.00 psia
 Start Date: 2016.03.22 End Date: 2016.03.22 Last Calib.: 2016.03.22
 Start Time: 04:41:00 End Time: 09:02:00 Time On Btm: 2016.03.22 @ 06:08:00
 Time Off Btm: 2016.03.22 @ 07:28:30

TEST COMMENT: 1st OPENING 10 MINUTES VERY WEAK BLOW FOR 10 MINUTWESMAND DIED
 1st SHUT-IN 45 MINUTES NOI BLOW BACK
 2nd OPENING 10 MINUTES-3-4 BUBBLES DEAD FLUSHED TOOL GOOD SURGEW NO HELP
 2nd SHUT-IN 15 MINUTES NO BLOW BACK



PRESSURE SUMMARY			
Time (Min.)	Pressure (psia)	Temp (deg F)	Annotation
0	2109.49	108.05	Initial Hydro-static
1	36.92	108.69	Open To Flow (1)
10	35.61	110.08	Shut-In(1)
53	90.42	111.40	End Shut-In(1)
54	36.62	111.38	Open To Flow (2)
64	36.55	111.72	Shut-In(2)
80	48.71	112.17	End Shut-In(2)
81	1954.05	112.48	Final Hydro-static

Recovery		
Length (ft)	Description	Volume (bbl)
5.00	DRILLING MUD WITH A SLIGHT	0.02
0.00	SHOW OF OIL BETWEEN THE TOOLS	0.00

Gas Rates			
	Choke (inches)	Pressure (psia)	Gas Rate (Mcf/d)



DRILL STEM TEST REPORT

TOOL DIAGRAM

Shelby Resources LLC
 621 17th Street SUITE 1155
 Denver Colorado 80293
 ATTN: Keith Revis

36-321s-17w PAWNEE
FRANCIS 1-36
 Job Ticket: 01219 **DST#: 3**
 Test Start: 2016.03.22 @ 04:41:00

Tool Information

Drill Pipe:	Length: 3662.00 ft	Diameter: 3.80 inches	Volume: 51.37 bbl	Tool Weight: 2000.00 lb
Heavy Wt. Pipe:	Length: 0.00 ft	Diameter: 0.00 inches	Volume: 0.00 bbl	Weight set on Packer: 20000.00 lb
Drill Collar:	Length: 217.00 ft	Diameter: 2.25 inches	Volume: 1.07 bbl	Weight to Pull Loose: 20000.00 lb
			<u>Total Volume: 52.44 bbl</u>	Tool Chased 0.00 ft
Drill Pipe Above KB:	18.00 ft			String Weight: Initial 64000.00 lb
Depth to Top Packer:	3890.00 ft			Final 64000.00 lb
Depth to Bottom Packer:	ft			
Interval between Packers:	5.00 ft			
Tool Length:	34.00 ft			
Number of Packers:	2	Diameter: 6.75 inches		

Tool Comments:

Tool Description	Length (ft)	Serial No.	Position	Depth (ft)	Accum. Lengths
Shut In Tool	5.00			3866.00	
Hydraulic tool	5.00			3871.00	
Jars	7.00			3878.00	
Safety Joint	2.00		Fluid	3880.00	
Top Packer	5.00			3885.00	
Packer	5.00			3890.00	29.00 Bottom Of Top Packer
Anchor	0.00			3890.00	
Recorder	0.00	9119	Inside	3890.00	
Recorder	0.00	9139	Outside	3890.00	
Bullnose	5.00			3895.00	5.00 Anchor Tool
Total Tool Length:	34.00				



DRILL STEM TEST REPORT

FLUID SUMMARY

Shelby Resources LLC

36-321s-17w PAWNEE

621 17th Street SUITE 1155
Denver Colorado 80293

FRANCIS 1-36

Job Ticket: 01219

DST#: 3

ATTN: Keith Revis

Test Start: 2016.03.22 @ 04:41:00

Mud and Cushion Information

Mud Type: Gel Chem
Mud Weight: 9.00 lb/gal
Viscosity: 59.00 sec/qt
Water Loss: 7.20 in³
Resistivity: ohm.m
Salinity: 5100.00 ppm
Filter Cake: 1.00 inches

Cushion Type:
Cushion Length: ft
Cushion Volume: bbl
Gas Cushion Type:
Gas Cushion Pressure: psia

Oil API: deg API
Water Salinity: ppm

Recovery Information

Recovery Table

Length ft	Description	Volume bbl
5.00	DRILLING MUD WITH A SLIGHT	0.025
0.00	SHOW OF OIL BETWEEN THE TOOLS	0.000

Total Length: 5.00 ft Total Volume: 0.025 bbl

Num Fluid Samples: 0

Num Gas Bombs: 0

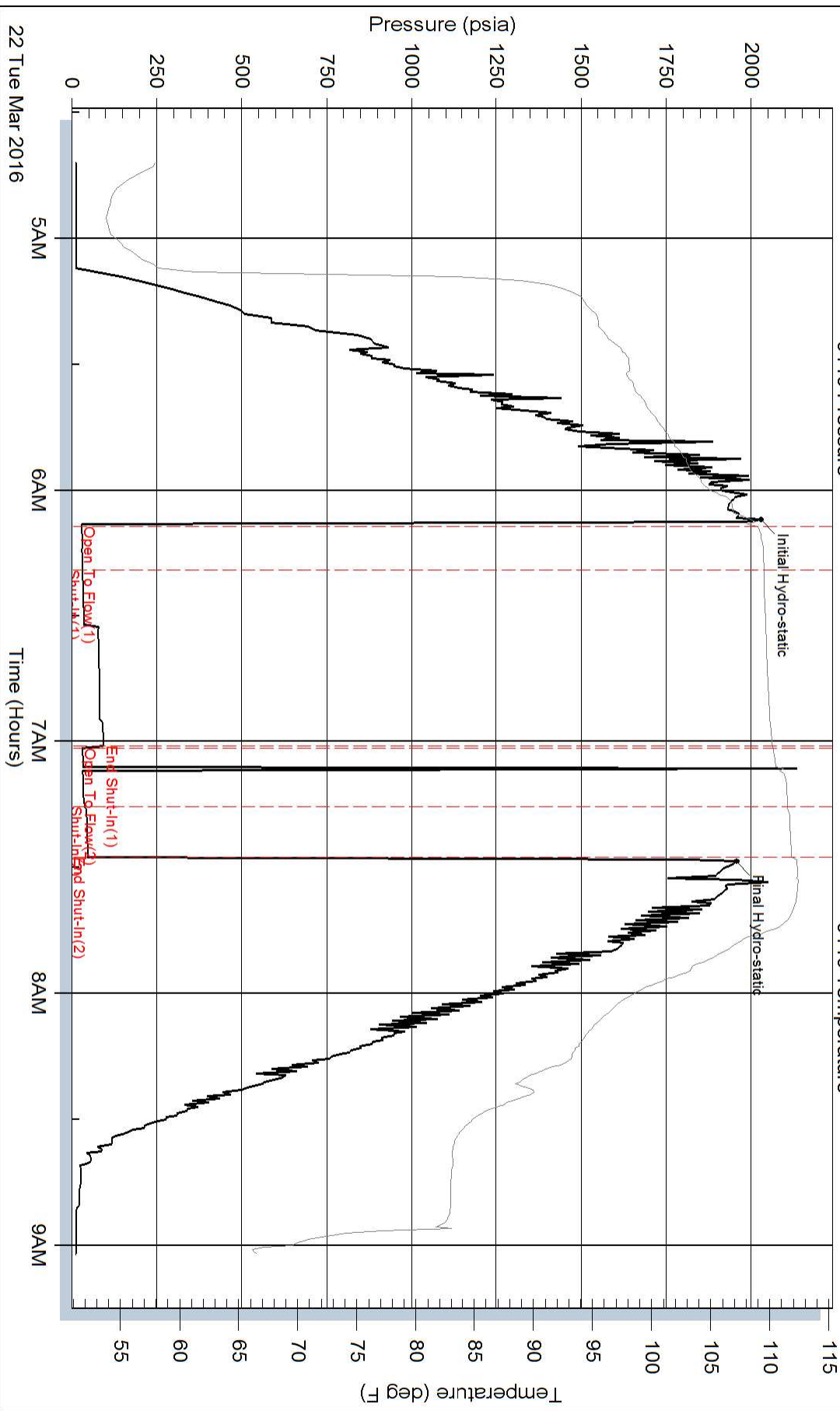
Serial #:

Laboratory Name:

Laboratory Location:

Recovery Comments:

Pressure vs. Time



Pressure vs. Time

