



**TRILOBITE  
TESTING, INC.**

# DRILL STEM TEST REPORT

Triple Crown Operating LLC

**26 19s 24w Ness**

2201 S Utica Pl Ste 100  
Tulsa OK 74114-7099

**Fanshier 1-26**

Job Ticket: 64754

**DST#: 2**

ATTN: Rod Anderson

Test Start: 2016.01.15 @ 14:45:00

## GENERAL INFORMATION:

Formation: **Mississippian**

Deviated: No Whipstock: ft (KB)

Time Tool Opened: 16:46:15

Time Test Ended: 22:09:00

Test Type: Conventional Bottom Hole (Reset)

Tester: Jim Svaty

Unit No: 76

**Interval: 4270.00 ft (KB) To 4310.00 ft (KB) (TVD)**

Reference Elevations: 2267.00 ft (KB)

Total Depth: 4310.00 ft (KB) (TVD)

2258.00 ft (CF)

Hole Diameter: 7.88 inches Hole Condition: Fair

KB to GR/CF: 9.00 ft

**Serial #: 8289 Outside**

Press @ Run Depth: 24.36 psig @ 4276.00 ft (KB)

Capacity: 8000.00 psig

Start Date: 2016.01.15

End Date:

2016.01.15

Last Calib.:

2016.01.15

Start Time: 14:45:02

End Time:

22:09:15

Time On Btm:

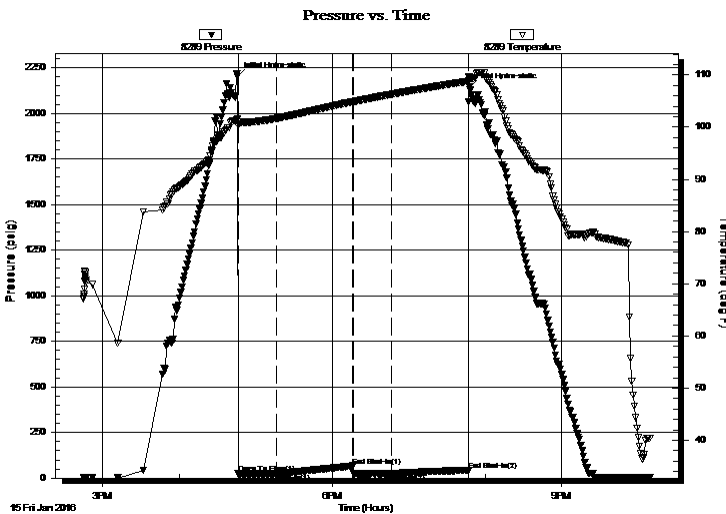
2016.01.15 @ 16:46:00

Time Off Btm:

2016.01.15 @ 19:47:45

**TEST COMMENT:** 30-IF- 1/4in. Blow Died Back in 8min.  
60-ISI- No Blow  
30-FF- Good Surge on Open----No Blow  
60-FSI- No Blow

## PRESSURE SUMMARY



Time (Min.)	Pressure (psig)	Temp (deg F)	Annotation
0	2200.53	101.52	Initial Hydro-static
1	23.76	100.34	Open To Flow (1)
31	23.58	101.67	Shut-In(1)
91	67.21	104.90	End Shut-In(1)
91	23.66	104.90	Open To Flow (2)
121	24.36	106.30	Shut-In(2)
181	40.37	108.81	End Shut-In(2)
182	2143.80	109.43	Final Hydro-static

## Recovery

Length (ft)	Description	Volume (bbl)
2.00	Oil Speck Mud 100%	0.01

\* Recovery from multiple tests

## Gas Rates

Choke (inches)	Pressure (psig)	Gas Rate (Mcf/d)

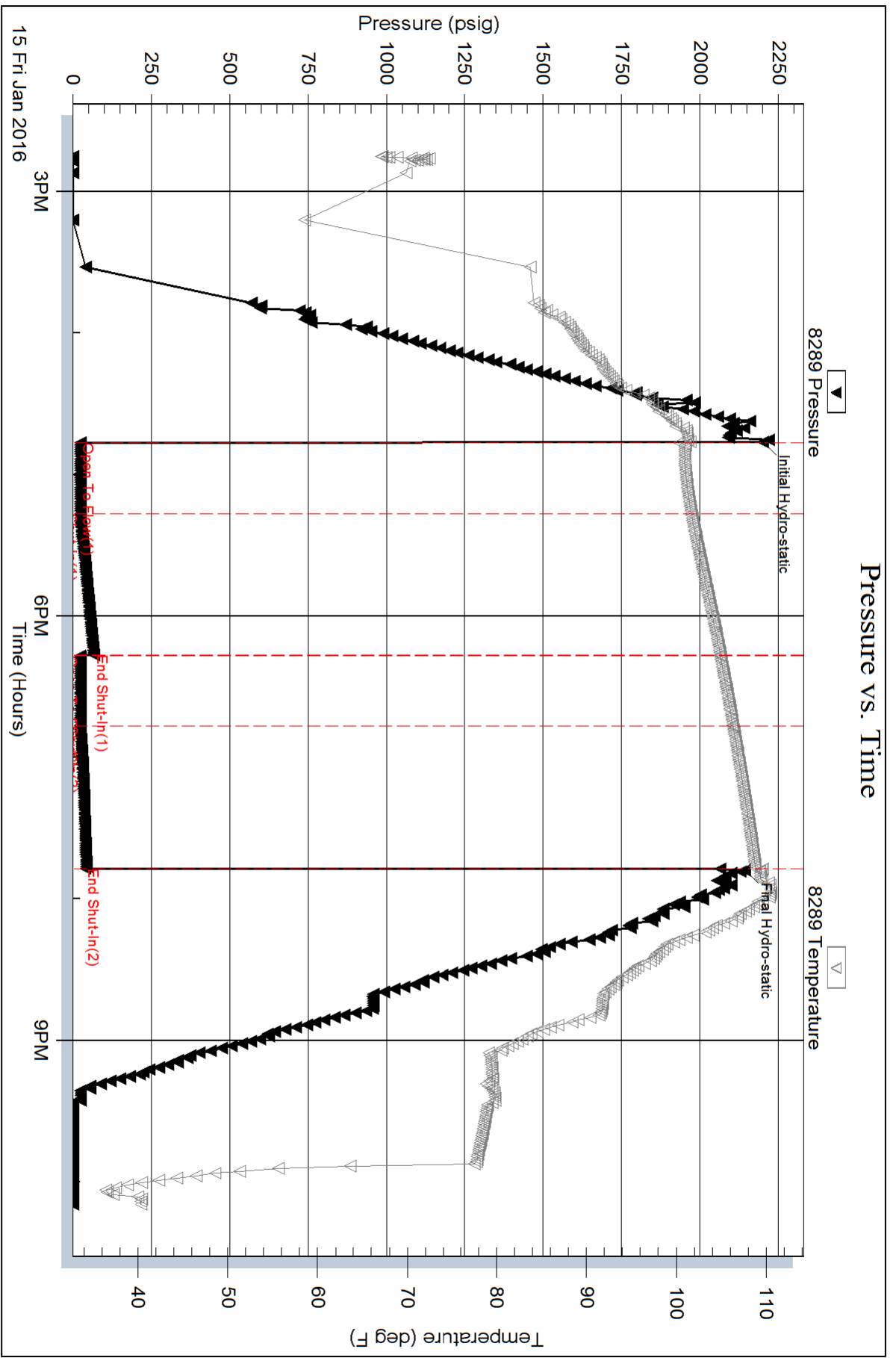


Serial #: 8289

Outside Triple Crown Operating LLC

Fanshler 1-26

DST Test Number: 2



Trilobite Testing, Inc

Ref. No: 64754

Printed: 2016.01.16 @ 08:05:57

Serial #: 8789

Inside

Triple Crown Operating LLC

Fanshler 1-26

DST Test Number: 2

