

BLACK GOLD PETROLEUM

LITHOLOGY STRIP LOG

WellSight Systems

Scale 1:240 (5"=100') Imperial

Measured Depth Log

Well Name: VINCENT OIL CORP. McCaustland #1-8

API: 15-057-20970-00-00

Location: NW NE SE SE SEC. 08, T 28S W, R 21 W, FORD CO. KS.

License Number: 5004

Region: Wildcat

Spud Date: Dec 22th, 2015

Drilling Completed: Jan 6th, 2016

Surface Coordinates: 1078' FSL, 545' FEL

Bottom Hole

Coordinates:

Ground Elevation (ft): 2,360'

K.B. Elevation (ft): 2,373'

Logged Interval (ft): 4,100' To: 5,175' Total Depth (ft): 5,175'

Formation: Mississippi

Type of Drilling Fluid: NATIVE MUD TO 3,814'. CHEMICAL GEL TO RTD

Printed by MUD.LOG from WellSight Systems 1-800-447-1534 www.WellSight.com

OPERATOR

Company: VINCENT OIL CORP.

Address: 155 N. MARKET STE 700

WICHITA, KANSAS 67202-1821

OFFICE; 316-262-3573

GEOLOGIST

Name: Jame R. Hall (Well Site Supervision)

Company: Black Gold Petroleum

Address: 5530 N. Sedgwick

Wichita, Kansas 67204-1828

316-838-2574, 316-217-1223

Comments

Drilling contractor: Duke Drilling, Rig #8, Tool Pusher; Galen Roach.

Surface Casing: 8 5/8" set at 616' w/250sx, cement, did circulate.

Daily Activity:

1/1/16: Drilling Topeka, Toronto.

1/2/16; Circulate Lansing A @ 4,353' and Lansing B @ 4,390.

1/3/16; Circulate Swope @ 4,656', Circulate Pawnee @4,870', short trip 25 stds. 18 stds pulled tight.

1/4/16; Circulate Base Penn. @ 4,975'. Circulate Morrow @ 4,995'. Circulate Miss. @ 5,022'. Commenced DST #1 4,926' - 5,022'. (During trip out for DST #1 Pipe strap was 1.59' long to the board).

1/5/16; Finished DST #1. Circulate Miss. @ 5,056'. Circulate Miss. @ 5,069'. Commenced DST #2 5,024' - 5,069'.

1/6/16; Circulate Miss. @ 5,099'. Drilled to RTD @ 5,175'. Ran open hole logs.

1/7/16; @ 01:30hrs. released rig to P&A.

Deviation Surveys: 0.25 deg. @ 314', 0.25 deg. @ 620', 0.25 deg. @ 1,122', 0.25 deg. @ 1,632', 0.25 deg. @ 2,108', 0.5 deg @ 2,616', 1.0 deg @ 3,124', 0.5 deg @ 3,505', 0.5 deg. @ 4,007', 1 deg. @ 4,515', 1.25 deg. @ 4,769' 1.5 deg. @ 5,022' .

Bit Record:

#1 12 1/4" out @ 620'.

#2 7 7/8" HTC GX20C in @ 620', out @ 5,175', made 4,555'.

Drilling time commenced: @ 4,100'. Maximum 10' wet and dry samples commenced: @ 5,175' to RTD. Samples delivered to Kansas Geological Sample Library at Wichita, Kansas.

Gas Detector: Blue Stem unit #5259. Digital Unit, commenced @ 4,100'.

Mud System: Mud-Co/Service Mud. Chemical Gel system @ 3,814'; Mud Engineer: Justen Whitin (Dodge City Office).

Open Hole Logs: , Casedhole Solutions, Hays Kansas,

Logging Engineer: Jeff Luebbers.

DIL, CDL/CNL/PE, Micro (5,173'- 4,000'), SON (5,173'- 616').

Sample tops are placed on this Plotted Geo. Report, with the reference wells "A" Imperial Oil & Gas, INC. Davis Trust #1-16 SE SE SW 16-T28S-R21W , and "B" Rheem Resources, INC. #1 Konda-Austin 50.N SW SE 9-T28S-R21W. Tops datum differences shown.

Serial #: 8525

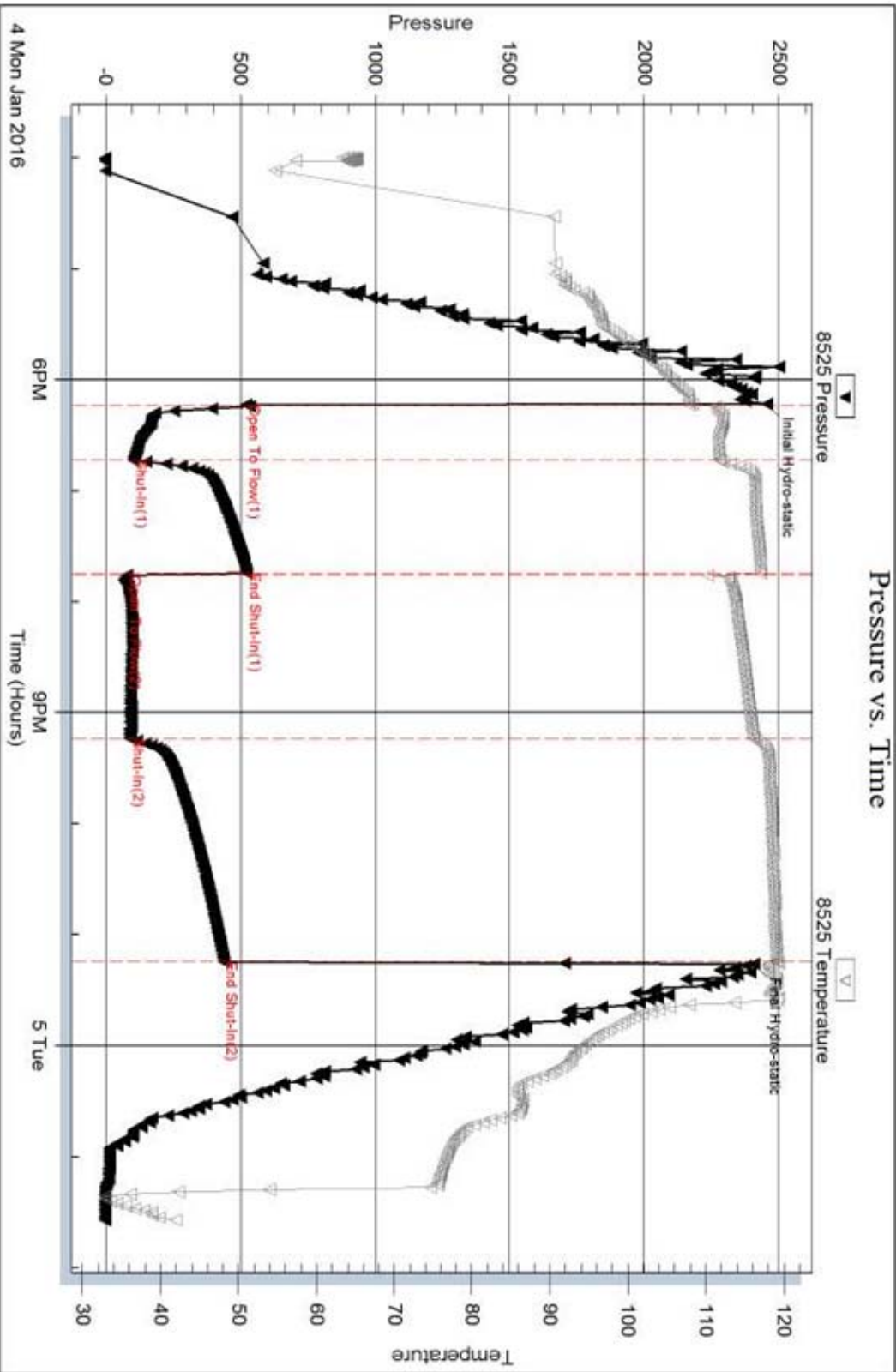
Inside

Vincent Oil Corporation

McCaustland #1-8

DST Test Number: 1

Pressure vs. Time



Triobite Testing, Inc

Ref. No: 57924

Printed: 2016.01.07 @ 16:35:51

Serial #: 8525

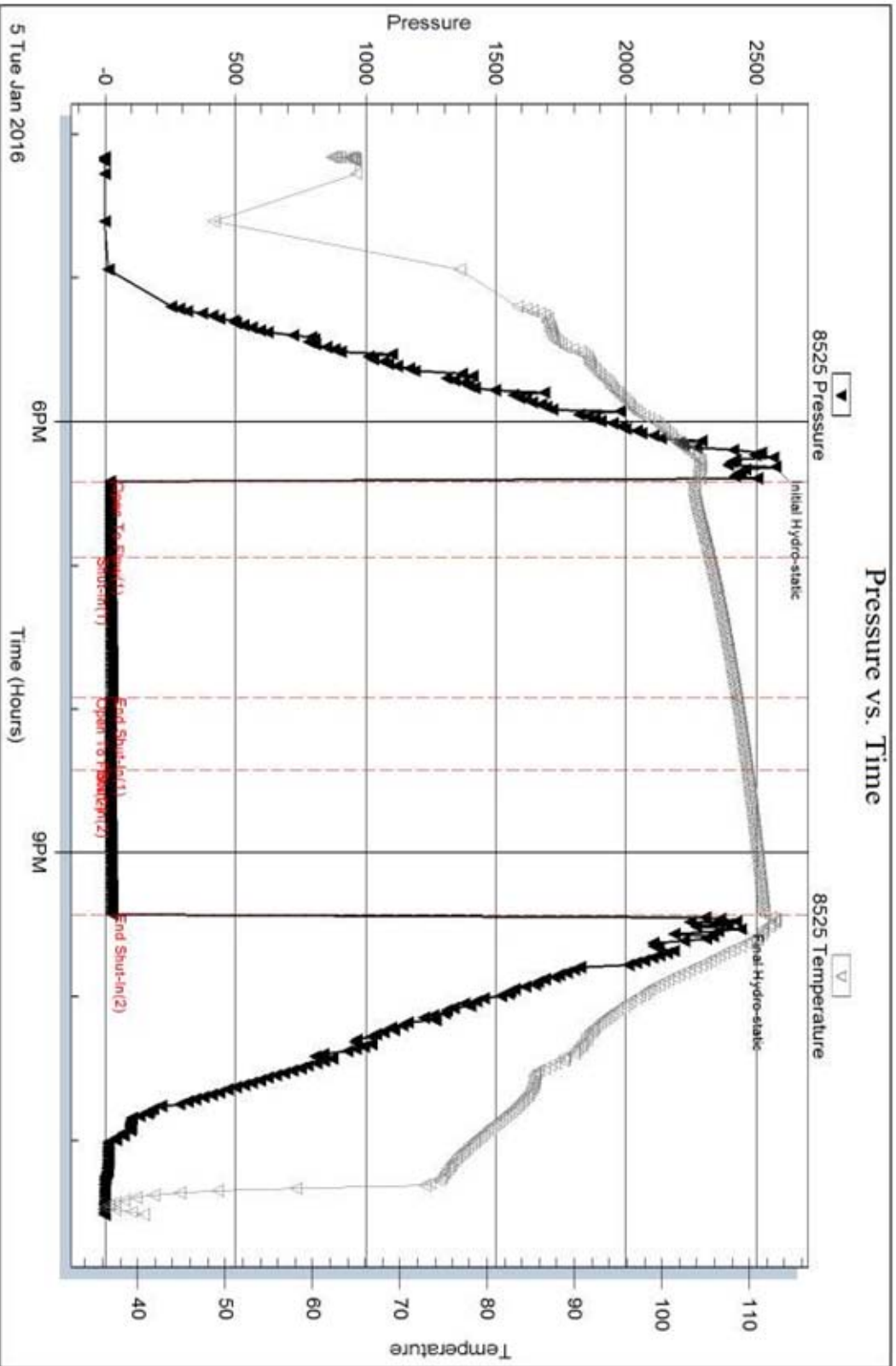
Inside

Vincent Oil Corporation

McCaustland #1-8

DST Test Number: 2

Pressure vs. Time



Triobite Testing, Inc

Ref. No: 57925

Printed: 2016.01.07 @ 16:33:50

DSTs

DST#1 4,926'-5022' (96'), 30-60-90-120; IH2454, IF 520-103 BOB 45sec, GTS 6min, (1/2"cke) 10" 515mcf, 20" 353mcf, 30" 238mcf, ISI 524 (no blow), FF 80-93 BOB /GTS imd., (1/4"cke) 10" 32mcf, 20" 38mcf, 30" 41mcf, (41mcf thru the remainder of the FF, FSI 438 (no blow), FH 2406, Rec; 4,657' GIP, 247' GCM (10%gas, 90%mud), BHT 119.

DST #2 5,024' - 5,069', 30-60-30-60, IH 2572, IF 19-20 (weak 3/4"), ISI 28 (no blow), FF 19-20 (weak surface blow), FSI 27 (no blow), FH 2424, Rec; 2' mud, BHT 112.

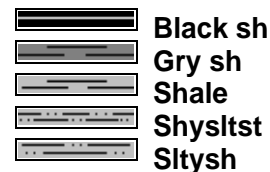
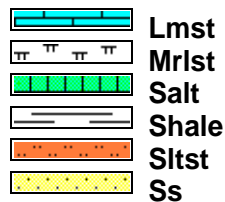
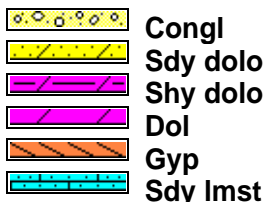
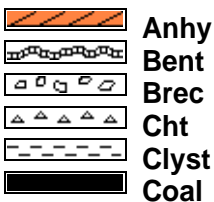
Qualifiers

CARBONATE CLASSIFICATION:

AFTER DUNHAM: **GRAIN;** any fossil, fossil fragment, sand grain, or other rock fragment within the rock. **MUDSTONE;** muddy carbonate rocks containing less than 10% grains. **WACKESTONE;** mud supported carbonate rocks with more than 10% grains. **PACKSTONE;** grain supported muddy carbonate rocks. **GRAINSTONE;** mud free carbonate rock, grain supported. **BOUNDSTONE;** carbonate rock bound together at deposition (coral, etc.). **CRYSTALLINE CARBONATE;** carbonate rock retaining to little of their depositional texture to be classified.

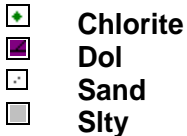
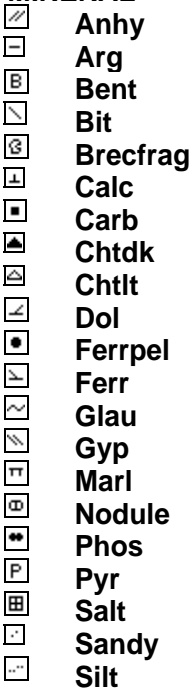
Qualifiers; (Fossils, Minerals, Shows, Porosity, etc.) Rare = less than 1% of sample total, Trace = less than 5% of sample total, Greater than 5% an estimate of total percentage.

ROCK TYPES

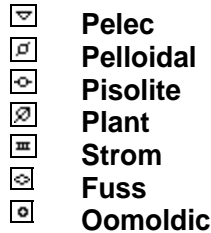
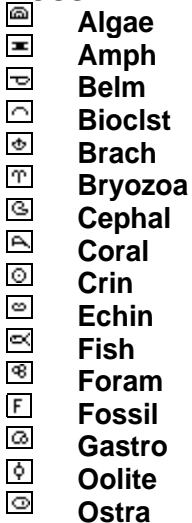


ACCESSORIES

MINERAL



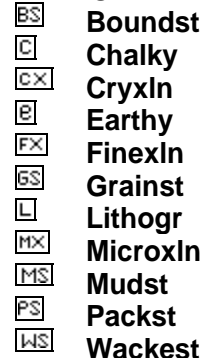
FOSSIL



STRINGER



TEXTURE



Curve Track 1

ROP (min/ft) ———
 Gamma (API) - - - -
 Caliper (API) ·····

TG, C1-C5

TG (units) ———
 C1 (units) - - - -
 C2 (units) - - - -
 C3 (units) ·····
 C4 (units) ·····
 C5 (units) ·····

Depth

Porosity Type

Lithology

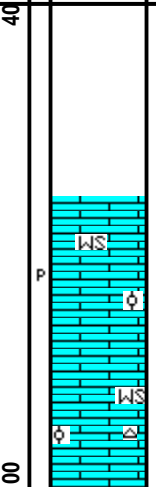
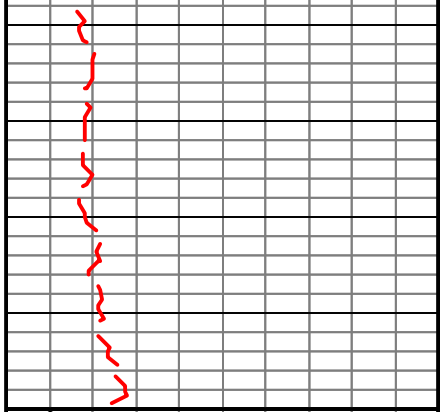
Oil Shows

Geological Descriptions

0 ROP (min/ft) 10
 0 Gamma (API) 150
 6 Caliper (API) 16

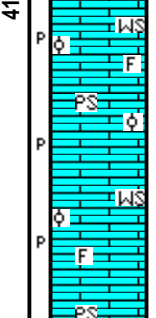
0 TG 100

**JIM HALL ON LOCATION 01/01/16,
 COMMENCED SAMPLES AND
 STRIP LOG @ 4,100'**



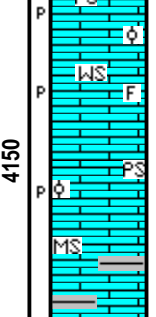
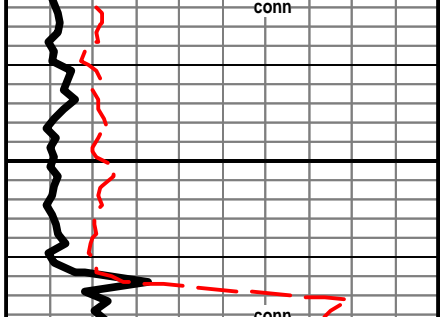
Wackestone; off wh, crm, hrd microxln, to soft-chky, micro-ool, no show rare barren por in the wet.

Wackestone; aa, rare free wh fresh chrt.



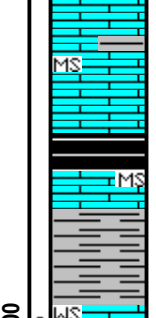
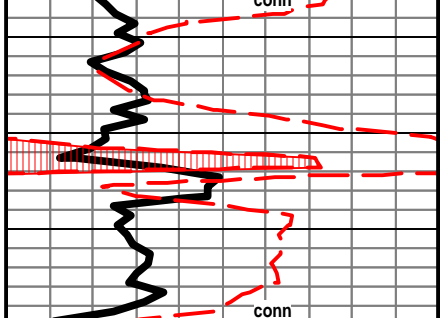
Wackestone / Packstone; off wh, crm, hrd-microxln, sft chky, micro-ool, rare foss frag in mtrx, dull yell to gold min fluor, no show, no cut, barren por in gry.

Wackestone / Packstone; off wh, crm, hard, micro-ool, vf-ool, in chky to microxln mtrx, trace foss frag, dull to brt fluor, no cut, min fluoro only, barren por in dry.



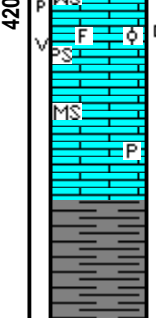
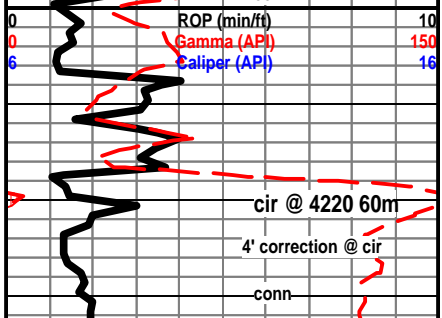
Wackestone / Packstone; foss to micro-ool, scatt brt to dull yell fluor, no cut, no show, barren por in dry.

Mudstone; off wh, lt gry, most hrd, sm foss frag in mtrx, slight inc in gry to blk shales here.



Heebner 4181 (-1808) A-1 B-8
 Shale; blk, hrd to sft, carb, no vis gas bubbles.

Shale; inc gry, red, blk, sft to hrd.



Toronto 4198 (-1825) A-2 B-7
 Wackestone / Packstone; off wh, micro-ool, most hrd, microxln to chky, dull yell-blue min fluor, no cut, rare spty blk stn-no cut, no vis gas bubbles, no live show, rare barren por in dry.

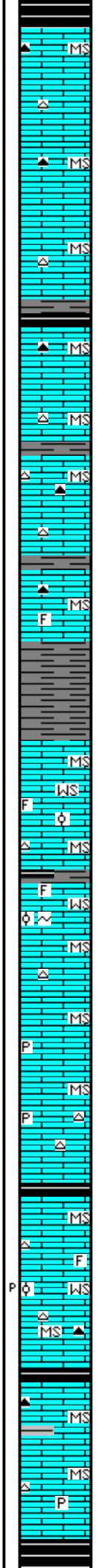
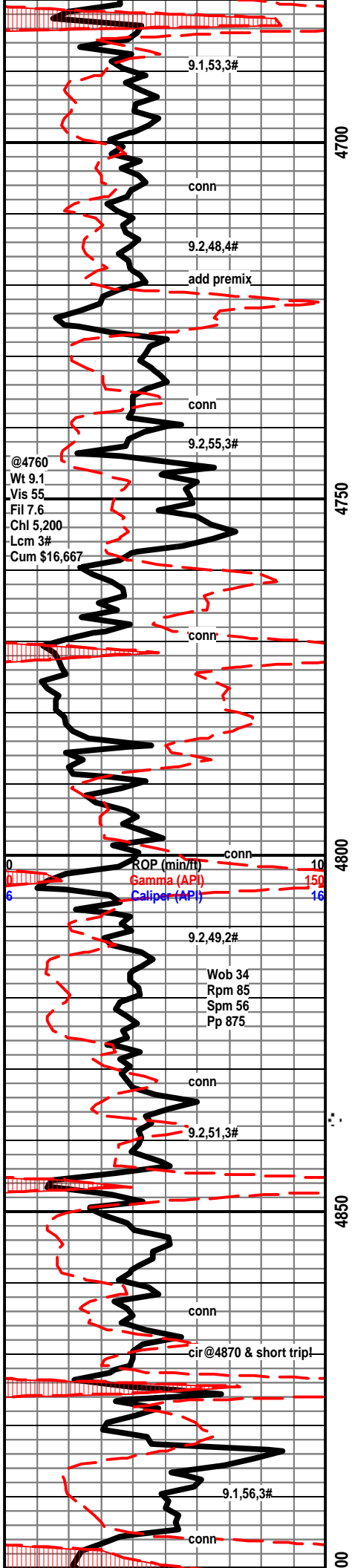
Mudstone; gry, hrd, chky, rare gry inclusions, inc in gry shale here, rare free pyr.

Shale; inc, gry-grn, sft, sm w/dark inclu, sm drk gry and blk shales, hrd to sft.



0 TG 100

4' correction



Shale; blk, hrd, carb, gsy when broken.

Mudstone; tan, brn, hrd, dns, silky to chky text, rare free chert

Mudstone; off wh-chky sft, crm to brn, silky-mxln to chky, hard dns, some britt, light look in wet, mineral fluor only, rare free lt and drk chert, some with rare foss inclusions.

Mudstone; crm, tan, hrd, chky-sft, some mxln brn blkly very hrd, rare bone wh free foss chert.

Shale; small influx, blk to drk gry, blk carb look but no vis gas bubbles.

Mudstone; incr gry, hrd-blky, dull to silky luster, no cut on sel samples, rare blkly free blk chert.

Shale; gry, drk gry to blk.

Mudstone; crm, brn, gry, britt-hrd, sm chky sft-britt, free drk to lt chert.

Mudstone; aa brn, drk brn, hrd-blky, silky-chky text, some dolomitic, dns, free chert, sl inc in drk gry shales here.

Shale; gry, dk gry, blk, scatt gry-grn to pale grn, some with earthy texture, blkly to platy.

Marmaton 4784 (-2411) A+11 B+3

Mudstone; tan, brn, most hrd-britt, chky to silky text, tight look wet, rare Wackestone; w/foss frag in tigh mtrx, no show, no cut on sel samples.

Mudstone; aa, Sattered Wackestone; crm, off wh, occ gry, micro-ool, micro-foss, tight look wet, no show, rare galuc in the mtrx.

Mudstone; off wh, crm, most hrd-britt, sm chky-sft, blkly-tabular, dns look wet, rare lt free chert.

Mudstone; crm, hrd-britt, most silky luster wet, sm dull chky, tt looking in wet, rare pyrite inclusions.

Mudstone; crm, tan, off wh, mxln-chky, hrd, some Wackestone inprt, off wh, tan, hrd, micro-ool, tight look in wet, no show.

Shale; blk, sft-hrd, carb, gas when broken.

Pawnee 4847 (-2474) A+15 B+4

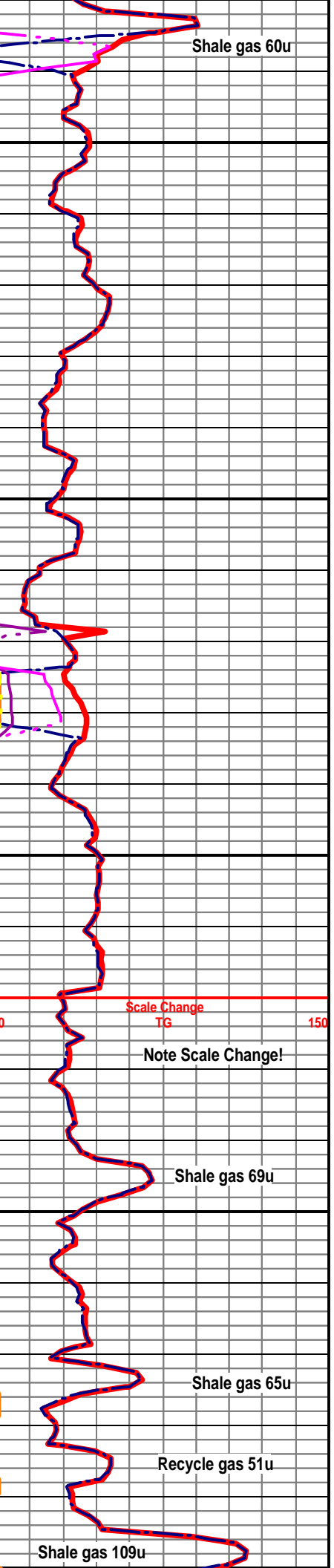
Wackestone; off wh, chky sft, to some mxln, micro-ool and rare foss frag in the mtrx, rare blk stn on edge no cut, rare barren pp por-no stn or cut, no odor, no vis gas bubbles, rare blue-gry free chert.

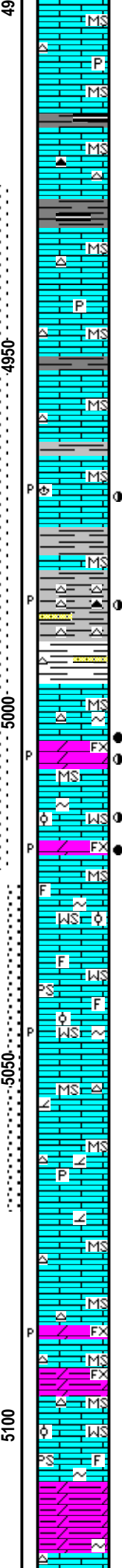
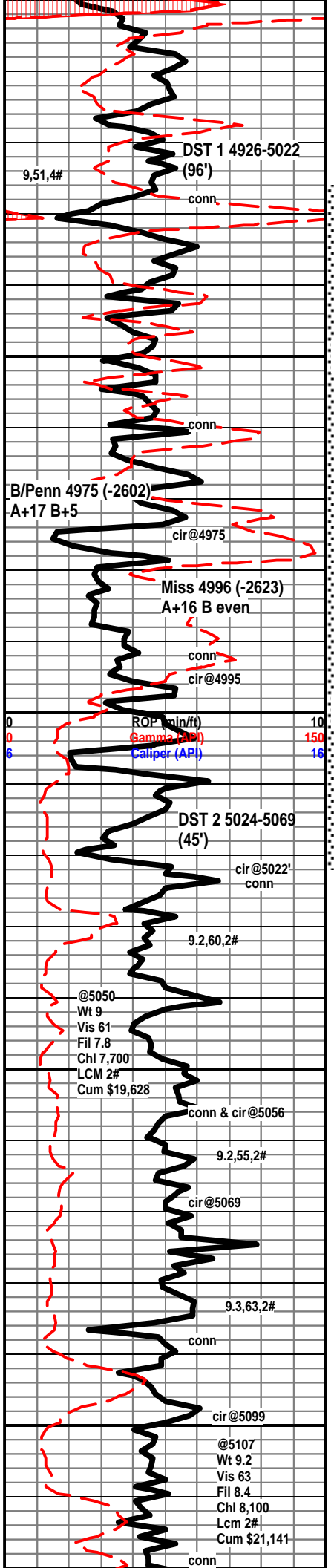
Labette 4873 (-2500) A+17 B+4

Mudstone; crm, tan, hrd-britt, chky-microxln, sm chky-sft, no show rare drk free chert, sample quality very poor after short trip!

Mudstone; aa inc in off wh, no show, scatt Wackestone; micro-ool, tight look no show.

CKE 4897 (-2524) A+15 B+2





Mudstone; crm, tan, off wh, chky to silky texture, dns, scattered Wackeston; crm, chky, britt to sft, micro-ool, tight look wet, no show, sample quality improving.

Shale; most blk-carb, no vis gas bubbles.

Mudstone; tan, brn, inc in silky-microxln texture, den, more blocky, scatt crm chky Wackeston; micro-ool, no show.

Mudstone; gry, buff, sm mott, vhrd, blk to tabular, dns, scattered micro-ool Wackestone, no show, rare tan mott free chert.

Mudstone; crm, off wh, inc sft to britt chky, no show, rare free pyr and chert.

Shale; blk-carb, drk gry.

Mudstone; aa, inc brn, gry, hrd, blk, dns.

Shale; influx, gry-grn and sea grn, wxy, sft to hrd.

Mudstone; crm, tan brn, hrd, fxln-chky, dns look wet, (10) samples with rare drk brn stn on edge and rare pp por, dull fluor, inst yell cut, no odor, no vis gas bubbles.

Shale; gry, pale grn, wxy, sm vcolored, most soft, traces free chert, rare spty drk oil stn, no fluor but inst yell cut on spoty pp por and fractured edges, some ool, no odor, rare vis gas bubbles.

Shale; vc, influx red-sft rthy, samples wash red, scatt chert aa, less show, rare SS; vfg, qtz, wlstrd, cons to porcons-no show.

Dolomite; lg gry, buff, hrd to vry hrd, vfsuc text, spty to even stn, vis pp por, bleeding rainbow when broken, vis bleeding gas, sm are barren, no oil in try, vry faint odor.

Mustone; crm, off wh, frm-hrd, some chky-sft, Wackestone; off wh, silky to dull luster, micro-ool, micro-foss, brt min fluor-no cut no show, rare galuc, sample quality very poor here after DST-1.

Wackstone; off wh, crm, hrd-britt, silky to dull luster, tight look wet, 1 sample with rare pp por-no stn, micro-ool, micro-foss, to xln, min fluo only no cut, no show.

Mudstone; lt gry, sm mott gry-grn, hrd, blk to tabular, dens, min fluor, mxln texture sly dolomitic, rare sample crm mudstone w/spty stn on edge, inst cut, no vis oil or gas bubbles, Wackestone aa, 1 sample with spty dead stn-no cut, 1 sample chert w/spty stn with slow cut, 1 sample dolomite w/spty stn, slow cut cave?

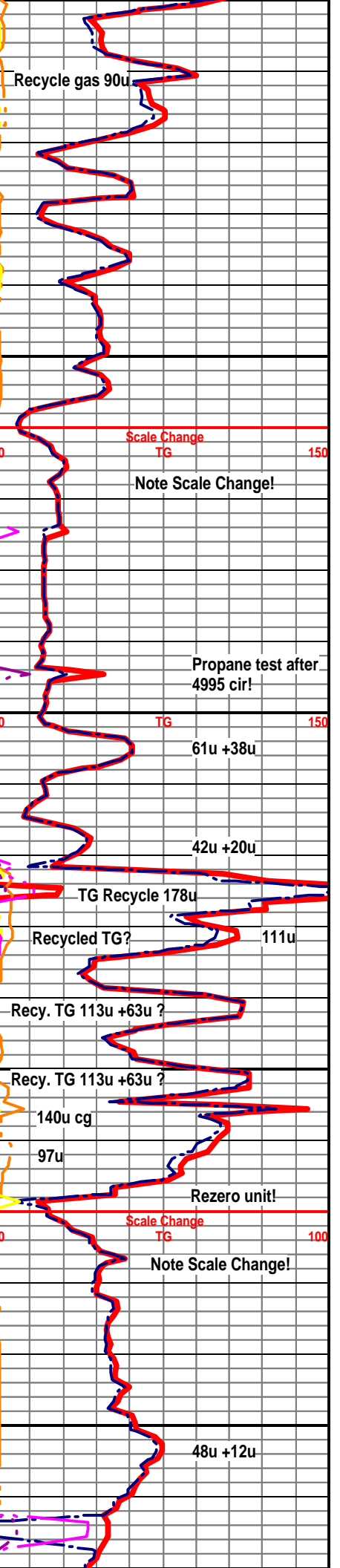
Mudstone; gry, lt gry, hrd, silky-mxln, blk to tabular, crm chky, britt-sft, rare silica inclusions, sample w/spty blk stn-no cut, rare free orange chert.

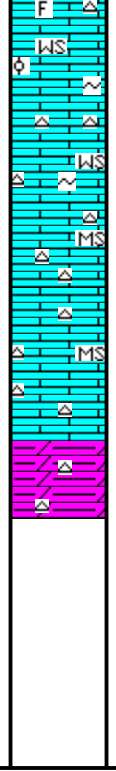
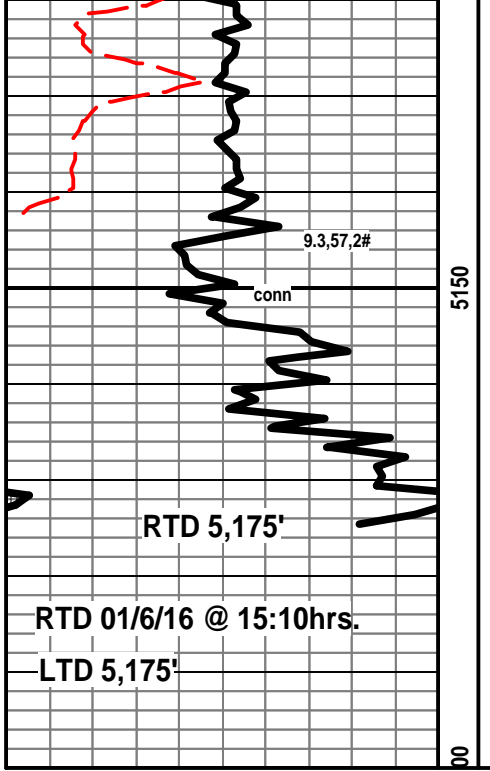
Dolomite; lit gry, vryhrd, vfsuc-gritty texture, argi resdu in dish, rare barren pp por-no cut, min fluo only, some shaly dolomite.

Mudstone; lt gry aa, rare micro-foss Wackestone, in the gray and crm, no show.

Wackestone / Packstone; crm, slky luster, micro-ool, micro-foss in tight looking mxln mtrx i wet, highly glauc, sm blk inclusions, rare wormy stn-no cut, no vis live show.

Dolomite; gry, vhrd, ufsuc-gritty, hily argill, sm





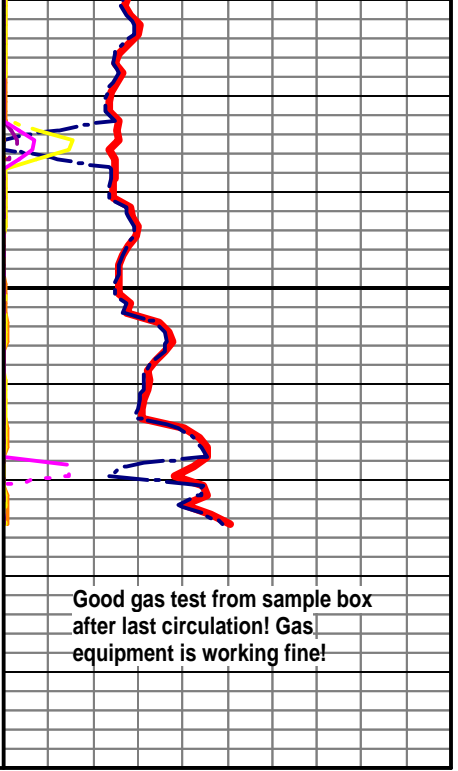
w/rare glauc, no vis por, no show

Wackestone; gry to crm, hrd, mxln mtrx, moco-ool rare ool, micro-foss, sm crm-chky, sm glauc, rare qrtz grains, sm cherty, influx free blkly to sharp chert, sm ool, sm w/glauc.

Mudstone; crm, gry, vhrd, chky-xln, dns, some foss Wackestone inprt, no show, influx 5% free chert, vry colored, blkly to sharp, sm foss.

Mudstone; gry, lt brn, vhrd, blkly to tabular, xln to mxln, dns, some with chert in the mtrx, 5% free chert aa most gry, sm foss.

Dolomite (argillaceous), to Dolomitec Mudstone; gry, hrd, blkly to platy, very fine xln to gritty texture, some chert remaining after dissolved in acid, no show, no por, less than 5% chert here, most gry to off wh, blkly to sharp, sm spicular.



Good gas test from sample box after last circulation! Gas equipment is working fine!