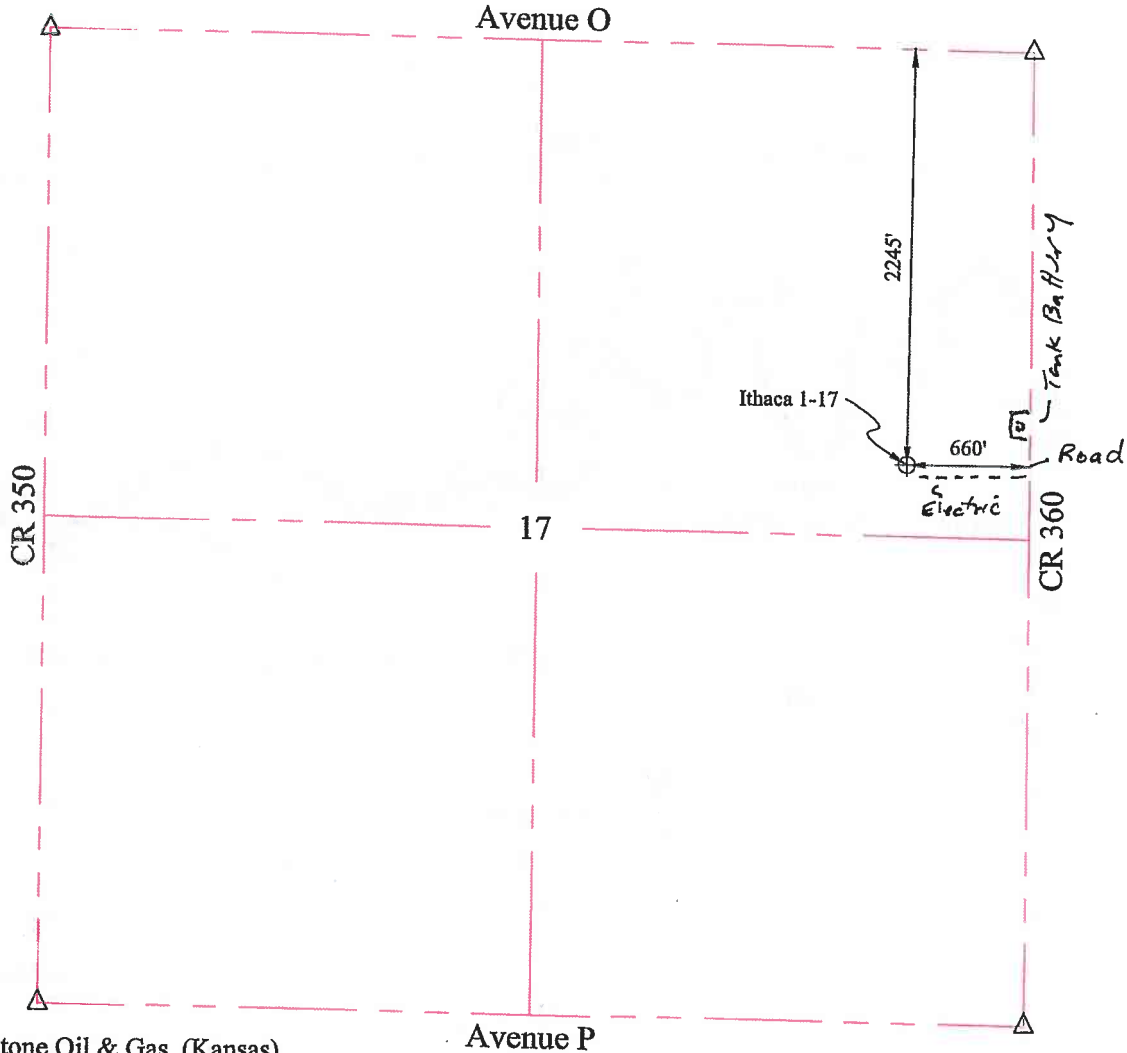


WELL LOCATION

NE Quarter Section 17, Township 18 South, Range 16 West
Rush County, Kansas



Blackstone Oil & Gas (Kansas)
1301 McKinney St. Suite 2800
Houston, TX 77010

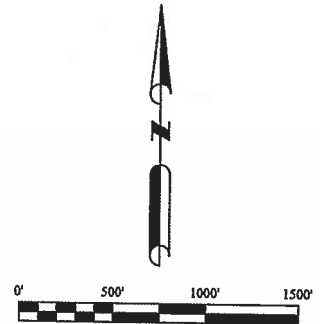
Rush County, KS

Section 17, T18S R16W 660' FEL & 2245' FNL

Elevation 1938.8'

Latitude N38°29'14.923" Longitude W99°06'33.374"

Set 1/2"x24" rebar at surface with lathe and T-Post
Cultivated



Blackstone Oil & Gas
1301 McKinney St. Ste 2800
Houston, TX 77010

**ADVANCED LAND SURVEYING
& DRAFTING**

PO Box 27 Hays, KS 67601 Office: (785) 650-0139 Fax: (785) 650-0189

Sheet:	1 of 1	Project #:	16-012
Drawn:	DEC	Scale:	1" = 1000'
Approved:	DEC	Date:	4/25/16