

T29S, R38W, 6th P.M.

LEGEND:

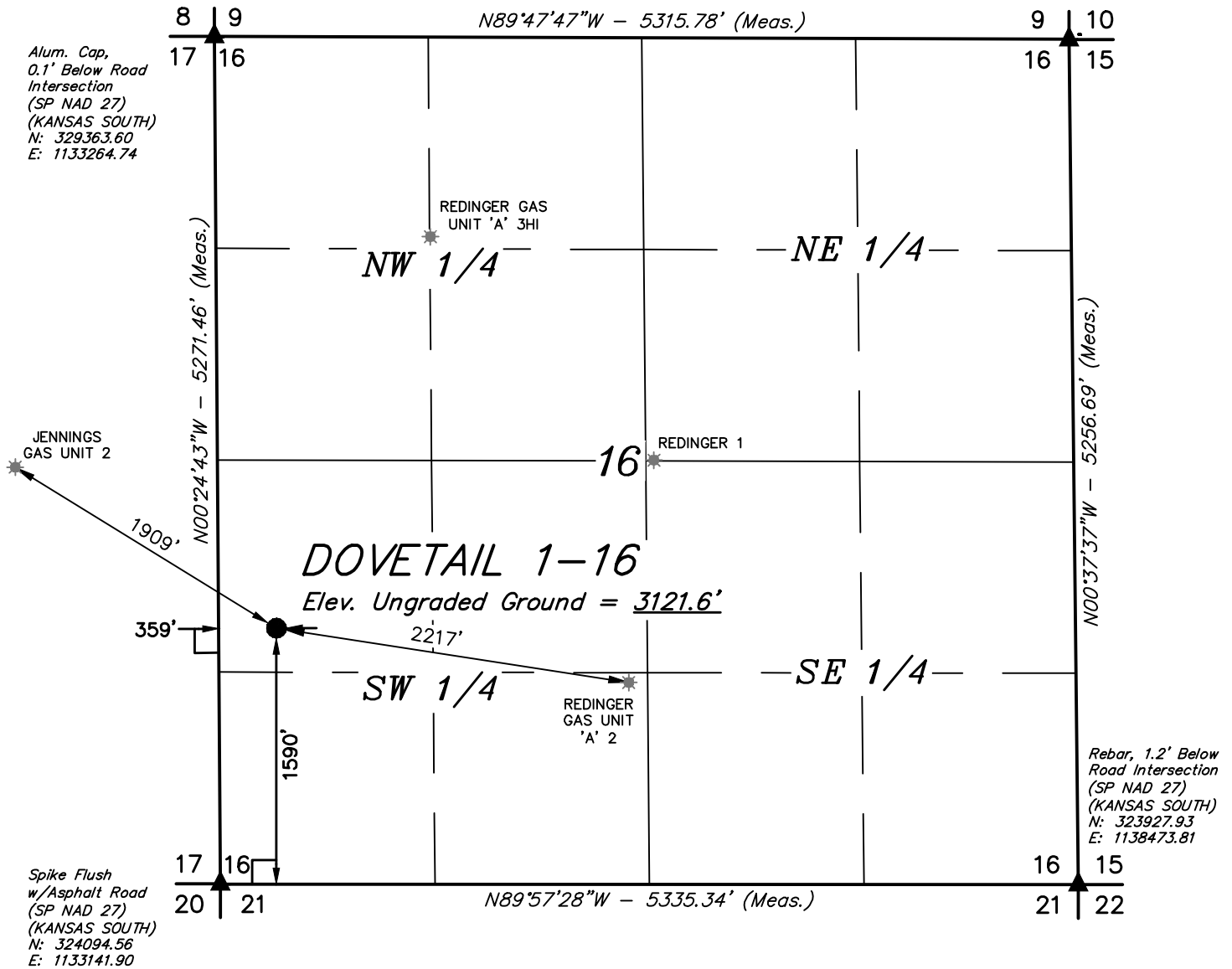
└ = 90° SYMBOL

● = PROPOSED WELLHEAD.

▲ = SECTION CORNERS LOCATED.

* = EXISTING WELLS

Blue Plastic Cap,
0.5' Below Road
Intersection
(SP NAD 27)
(KANSAS SOUTH)
N: 329182.63
E: 1138576.60



NAD 83 (SURFACE LOCATION)

LATITUDE = 37°31'22.72" (37.522978)
LONGITUDE = 101°29'18.94" (101.488594)

NAD 27 (SURFACE LOCATION)

LATITUDE = 37°31'22.64" (37.522956)
LONGITUDE = 101°29'17.34" (101.488150)

STATE PLANE NAD 83 (KANSAS SOUTH)

N: 1638024.90 E: 445763.73

STATE PLANE NAD 27 (KANSAS SOUTH)

N: 325673.05 E: 1133538.01



CERTIFICATE

THIS IS TO CERTIFY THAT THE ABOVE PLAT WAS PREPARED FROM FIELD NOTES OF ACTUAL SURVEYS MADE BY ME OR UNDER MY SUPERVISION AND THAT THE SAME ARE TRUE AND CORRECT TO THE BEST OF MY KNOWLEDGE AND BELIEF.



BASIS OF BEARINGS
BASIS OF BEARINGS IS A G.P.S. OBSERVATION

BASIS OF ELEVATION

THE BASIS OF ELEVATION, ELEV: 3088.60' WAS DERIVED FROM AN OPUS SOLUTION AT LAT: 37°38'57.14" LONG: 101°20'30.67" AND HAS A DATUM OF NAVD88.



MERIT ENERGY COMPANY

DOVETAIL 1-16
1590' FSL 359' FWL
NW 1/4 SW 1/4, SECTION 16, T29S, R38W, 6th P.M.
GRANT COUNTY, KANSAS

SURVEYED BY	J.P.	07-19-16	SCALE
DRAWN BY	C.D.L.	07-20-16	1" = 1000'

WELL LOCATION PLAT



UELS, LLC
Corporate Office * 85 South 200 East
Vernal, UT 84078 * (435) 789-1017