



**TEMPORARY ABANDONMENT WELL APPLICATION**

All blanks must be complete

OPERATOR: License# \_\_\_\_\_  
 Name: \_\_\_\_\_  
 Address 1: \_\_\_\_\_  
 Address 2: \_\_\_\_\_  
 City: \_\_\_\_\_ State: \_\_\_\_\_ Zip: \_\_\_\_\_ + \_\_\_\_\_  
 Contact Person: \_\_\_\_\_  
 Phone: ( \_\_\_\_\_ ) \_\_\_\_\_  
 Contact Person Email: \_\_\_\_\_  
 Field Contact Person: \_\_\_\_\_  
 Field Contact Person Phone: ( \_\_\_\_\_ ) \_\_\_\_\_

API No. 15- \_\_\_\_\_  
 Spot Description: \_\_\_\_\_  
 \_\_\_\_\_ - \_\_\_\_\_ - \_\_\_\_\_ - \_\_\_\_\_ Sec. \_\_\_\_\_ Twp. \_\_\_\_\_ S. R. \_\_\_\_\_  E  W  
 \_\_\_\_\_ feet from  N /  S Line of Section  
 \_\_\_\_\_ feet from  E /  W Line of Section  
 GPS Location: Lat: \_\_\_\_\_, Long: \_\_\_\_\_  
(e.g. xx.xxxxx) (e.g. -xxx.xxxxx)  
 Datum:  NAD27  NAD83  WGS84  
 County: \_\_\_\_\_ Elevation: \_\_\_\_\_  GL  KB  
 Lease Name: \_\_\_\_\_ Well #: \_\_\_\_\_  
 Well Type: (check one)  Oil  Gas  OG  WSW  Other: \_\_\_\_\_  
 SWD Permit #: \_\_\_\_\_  ENHR Permit #: \_\_\_\_\_  
 Gas Storage Permit #: \_\_\_\_\_  
 Spud Date: \_\_\_\_\_ Date Shut-In: \_\_\_\_\_

	Conductor	Surface	Production	Intermediate	Liner	Tubing
Size						
Setting Depth						
Amount of Cement						
Top of Cement						
Bottom of Cement						

Casing Fluid Level from Surface: \_\_\_\_\_ How Determined? \_\_\_\_\_ Date: \_\_\_\_\_

Casing Squeeze(s): \_\_\_\_\_ to \_\_\_\_\_ w / \_\_\_\_\_ sacks of cement, \_\_\_\_\_ to \_\_\_\_\_ w / \_\_\_\_\_ sacks of cement. Date: \_\_\_\_\_  
(top) (bottom) (top) (bottom)

Do you have a valid Oil & Gas Lease?  Yes  No

Depth and Type:  Junk in Hole at \_\_\_\_\_  Tools in Hole at \_\_\_\_\_ Casing Leaks:  Yes  No Depth of casing leak(s): \_\_\_\_\_  
(depth) (depth)

Type Completion:  ALT. I  ALT. II Depth of:  DV Tool: \_\_\_\_\_ w / \_\_\_\_\_ sacks of cement  Port Collar: \_\_\_\_\_ w / \_\_\_\_\_ sack of cement  
(depth) (depth)

Packer Type: \_\_\_\_\_ Size: \_\_\_\_\_ Inch Set at: \_\_\_\_\_ Feet

Total Depth: \_\_\_\_\_ Plug Back Depth: \_\_\_\_\_ Plug Back Method: \_\_\_\_\_

**Geological Data:**

Formation Name	Formation Top	Formation Base	Completion Information
1. _____	At: _____	to _____ Feet	Perforation Interval _____ to _____ Feet or Open Hole Interval _____ to _____ Feet
2. _____	At: _____	to _____ Feet	Perforation Interval _____ to _____ Feet or Open Hole Interval _____ to _____ Feet

UNDER PENALTY OF PERJURY I HEREBY ATTEST THAT THE INFORMATION CONTAINED HEREIN IS TRUE AND CORRECT TO THE BEST OF MY KNOWLEDGE

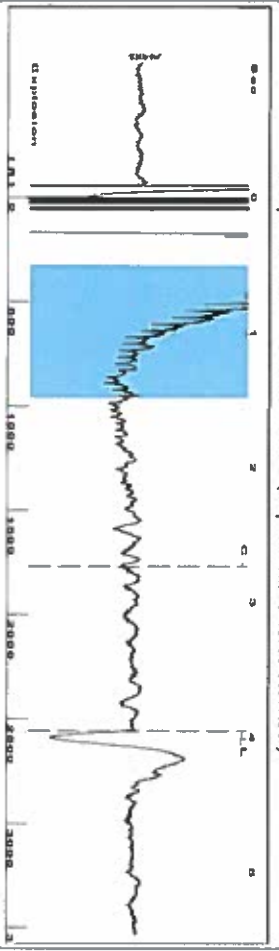
Submitted Electronically

<b>Do NOT Write in This Space - KCC USE ONLY</b>	Date Tested: _____	Results: _____	Date Plugged: _____	Date Repaired: _____	Date Put Back in Service: _____
	Review Completed by: _____ Comments: _____				
TA Approved: <input type="checkbox"/> Yes <input type="checkbox"/> Denied Date: _____					

**Mail to the Appropriate KCC Conservation Office:**

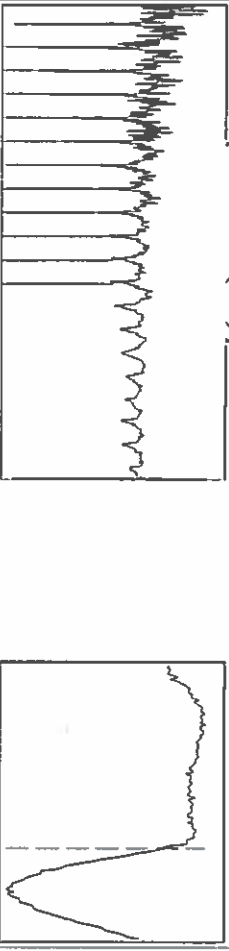
	KCC District Office #1 - 210 E. Frontview, Suite A, Dodge City, KS 67801	Phone 620.225.8888
	KCC District Office #2 / UPGS - 3450 N. Rock Road, Building 600, Suite 601, Wichita, KS 67226	Phone 316.630.4000
	KCC District Office #3 - 1500 SW Seventh Steet, Chanute, KS 66720	Phone 620.432.2300
	KCC District Office #4 - 2301 E. 13th Street, Hays, KS 67601-2651	Phone 785.625.0550

Group: PIONEER Well: LAMPE 2-8 (acquired on: 05/05/16 11:47:30 )



Filter Type High Pass Automatic Collar Count Yes  
 Manual Acoustic Velo 1262.95 ft/s Manual JTS/sec 19.9203  
 Time 3.958 sec  
 Joints 80.7096 ft  
 Depth 2358.50 ft

0.5 to 1.5 (Sec)



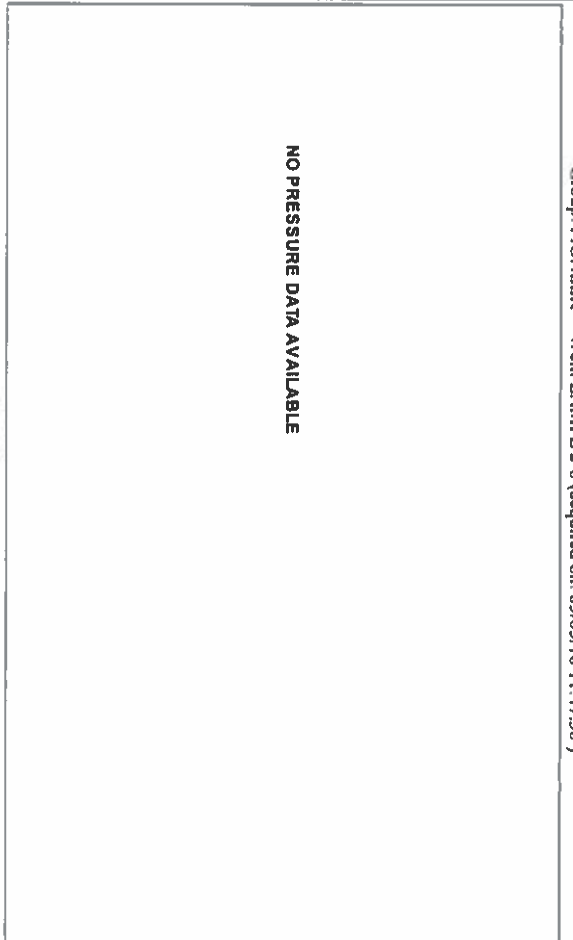
Analysis Method: Automatic

Group: PIONEER Well: LAMPE 2-8 (acquired on: 05/05/16 11:47:30 )

<b>Production</b>	<b>Potential</b>	<b>Casing Pressure</b>	<b>Producing</b>
Current	Oil	0.2 psi (g)	Annular
Oil 0	Water	0.1 psi	Gas Flow
Water	Gas	1.00 min	% Liquid
Gas		Gas/Liquid Interface Pressure	87 %
		1.2 psi (g)	
<b>IPR Method</b>	<b>Vogel</b>	<b>Liquid Level Depth</b>	<b>Pump Intake</b>
PBHP/SBHP	0.0	2558.50 ft	126.1 psi (g)
Production Efficiency		Pump Intake Depth	Producing BHP
		2860.00 ft	83.4 psi (g)
<b>Oil</b>	<b>40 deg API</b>	<b>Acoustic Velocity</b>	<b>Static BHP</b>
<b>Water</b>	<b>1.05 Sp.Gr.H2O</b>	1292.82 ft/s	
<b>Gas</b>	<b>0.71 Sp.Gr.AIR</b>	<b>Formation Depth</b>	
		2766.00 ft	
<b>Formation Submergence</b>			
Total Gaseous Liquid Column HT (TVD)			
Equivalent Gas Free Liquid HT (TVD)			
<b>Acoustic Test</b>			

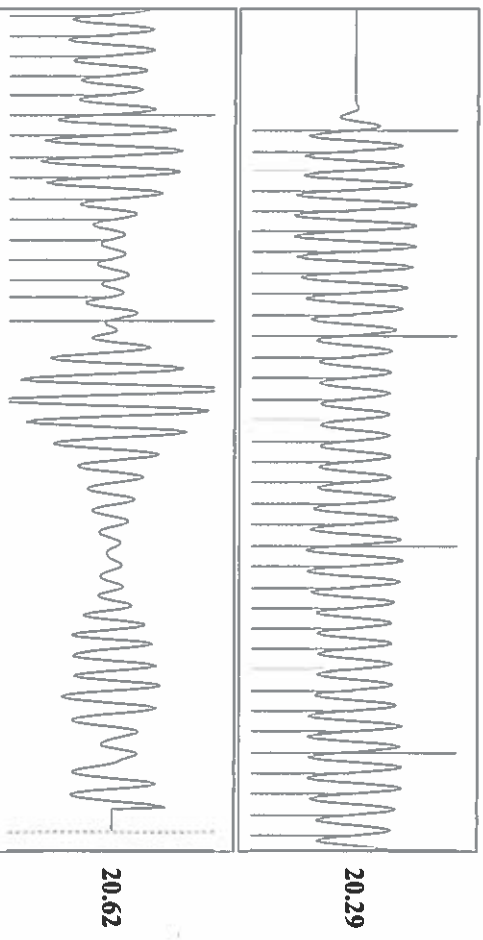


Group: PIONEER Well: LAMPE 2-8 (acquired on: 05/05/16 11:47:30 )



Change in Pressure 0.13 psi PT4009  
 Change in Time 1.00 min Range

Group: PIONEER Well: LAMPE 2-8 (acquired on: 05/05/16 11:47:30 )



Acoustic Velocity 1292.82 ft/s Joints counted 50  
 Joints Per Second 20.3915 ft/sec Joints to liquid level 80.7096  
 Depth to liquid level 2358.5 ft Filter Width 17.9203  
 Automatic Collar Count Yes Time to 1st Collar 0.288

Conservation Division  
District Office No. 1  
210 E. Frontview, Suite A  
Dodge City, KS 67801



Phone: 620-225-8888  
Fax: 620-225-8885  
<http://kcc.ks.gov/>

Jay Scott Emler, Chairman  
Shari Feist Albrecht, Commissioner  
Pat Apple, Commissioner

Sam Brownback, Governor

May 17, 2016

Shawn Hildreth  
Linn Operating, Inc.  
600 TRAVIS STE 5100  
HOUSTON, TX 77002-3018

Re: Temporary Abandonment  
API 15-075-20192-00-00  
LAMPE JOHN INC 2-8  
NE/4 Sec.08-26S-39W  
Hamilton County, Kansas

Dear Shawn Hildreth:

"Your temporary abandonment (TA) application for the well listed above has been approved. In accordance with K.A.R. 82-3-111 the TA status of this well will expire 05/17/2017.

- \* If you return this well to service or plug it, please notify the District Office.
- \* If you sell this well you are required to file a Transfer of Operator form, T-1.
- \* If the well will remain temporarily abandoned, you must submit a new TA application, CP-111, before 05/17/2017.

You may contact me at the number above if you have questions.

Very truly yours,

Michael Maier"