



# TEMPORARY ABANDONMENT WELL APPLICATION

OPERATOR: License# \_\_\_\_\_  
 Name: \_\_\_\_\_  
 Address 1: \_\_\_\_\_  
 Address 2: \_\_\_\_\_  
 City: \_\_\_\_\_ State: \_\_\_\_\_ Zip: \_\_\_\_\_ + \_\_\_\_\_  
 Contact Person: \_\_\_\_\_  
 Phone: ( \_\_\_\_\_ ) \_\_\_\_\_  
 Contact Person Email: \_\_\_\_\_  
 Field Contact Person: \_\_\_\_\_  
 Field Contact Person Phone: ( \_\_\_\_\_ ) \_\_\_\_\_

API No. 15- \_\_\_\_\_  
 Spot Description: \_\_\_\_\_  
 \_\_\_\_\_ - \_\_\_\_\_ - \_\_\_\_\_ - \_\_\_\_\_ Sec. \_\_\_\_\_ Twp. \_\_\_\_\_ S. R. \_\_\_\_\_  E  W  
 \_\_\_\_\_ feet from  N /  S Line of Section  
 \_\_\_\_\_ feet from  E /  W Line of Section  
 GPS Location: Lat: \_\_\_\_\_, Long: \_\_\_\_\_  
(e.g. xx.xxxxx) (e.g. -xxx.xxxxx)  
 Datum:  NAD27  NAD83  WGS84  
 County: \_\_\_\_\_ Elevation: \_\_\_\_\_  GL  KB  
 Lease Name: \_\_\_\_\_ Well #: \_\_\_\_\_  
 Well Type: (check one)  Oil  Gas  OG  WSW  Other: \_\_\_\_\_  
 SWD Permit #: \_\_\_\_\_  ENHR Permit #: \_\_\_\_\_  
 Gas Storage Permit #: \_\_\_\_\_  
 Spud Date: \_\_\_\_\_ Date Shut-In: \_\_\_\_\_

	Conductor	Surface	Production	Intermediate	Liner	Tubing
Size						
Setting Depth						
Amount of Cement						
Top of Cement						
Bottom of Cement						

Casing Fluid Level from Surface: \_\_\_\_\_ How Determined? \_\_\_\_\_ Date: \_\_\_\_\_

Casing Squeeze(s): \_\_\_\_\_ to \_\_\_\_\_ w / \_\_\_\_\_ sacks of cement, \_\_\_\_\_ to \_\_\_\_\_ w / \_\_\_\_\_ sacks of cement. Date: \_\_\_\_\_  
(top) (bottom) (top) (bottom)

Do you have a valid Oil & Gas Lease?  Yes  No

Depth and Type:  Junk in Hole at \_\_\_\_\_  Tools in Hole at \_\_\_\_\_ Casing Leaks:  Yes  No Depth of casing leak(s): \_\_\_\_\_  
(depth) (depth)

Type Completion:  ALT. I  ALT. II Depth of:  DV Tool: \_\_\_\_\_ w / \_\_\_\_\_ sacks of cement  Port Collar: \_\_\_\_\_ w / \_\_\_\_\_ sack of cement  
(depth) (depth)

Packer Type: \_\_\_\_\_ Size: \_\_\_\_\_ Inch Set at: \_\_\_\_\_ Feet

Total Depth: \_\_\_\_\_ Plug Back Depth: \_\_\_\_\_ Plug Back Method: \_\_\_\_\_

**Geological Data:**

Formation Name	Formation Top	Formation Base	Completion Information
1. _____	At: _____	to _____ Feet	Perforation Interval _____ to _____ Feet or Open Hole Interval _____ to _____ Feet
2. _____	At: _____	to _____ Feet	Perforation Interval _____ to _____ Feet or Open Hole Interval _____ to _____ Feet

~~UNDER PENALTY OF PERJURY I HEREBY ATTEST THAT THE INFORMATION CONTAINED HEREIN IS TRUE AND CORRECT TO THE BEST OF MY KNOWLEDGE~~

Submitted Electronically

<b>Do NOT Write in This Space - KCC USE ONLY</b>	Date Tested: _____	Results: _____	Date Plugged: _____	Date Repaired: _____	Date Put Back in Service: _____
	Review Completed by: _____ Comments: _____				
TA Approved: <input type="checkbox"/> Yes <input type="checkbox"/> Denied Date: _____					

**Mail to the Appropriate KCC Conservation Office:**

	KCC District Office #1 - 210 E. Frontview, Suite A, Dodge City, KS 67801	Phone 620.225.8888
	KCC District Office #2 / UPGS - 3450 N. Rock Road, Building 600, Suite 601, Wichita, KS 67226	Phone 316.630.4000
	KCC District Office #3 - 1500 SW Seventh Steet, Chanute, KS 66720	Phone 620.432.2300
	KCC District Office #4 - 2301 E. 13th Street, Hays, KS 67601-2651	Phone 785.625.0550

**General**

Well ID 125894  
 Well Beyler 1-A  
 Company Sandridge  
 Operator - \*-  
 Lease Name Beyler 1-A  
 Elevation 1976.00 ft  
 Production Method Other  
 Dataset Description

Comment

**Surface Unit**

Manufacturer - \*-  
 Unit Class Conventional  
 Unit API Number - \*-  
 Measured Stroke Length - \*- in  
 Rotation CW  
 Counter Balance Effect (Weights Level) - \*- Klb  
 Weight Of Counter Weights 2000 lb

**Prime Mover**

Motor Type Electric  
 Rated HP - \*- HP  
 Run Time 24 hr/day  
 MFG/Comment - \*-

**Electric Motor Parameters**

Rated Full Load AMPS - \*-  
 Rated Full Load RPM - \*-  
 Synchronous RPM 1200  
 Voltage - \*-  
 Hertz 60  
 Phase 3  
 Power Consumption 5  
 Power Demand 8 \$/KW

**Tubulars**

Tubing OD - \*- in  
 Casing OD - \*- in  
 Average Joint Length 21.700 ft  
 Anchor Depth - \*- ft  
 Kelly Bushing 0.00 ft

**Rod String**

Top Taper Taper 2 Taper 3 Taper 4 Taper 5 Taper 6  
 Rod Type - \*- - \*- - \*- - \*- - \*-  
 Rod Length - \*- - \*- - \*- - \*- - \*- ft  
 Rod Diameter - \*- - \*- - \*- - \*- - \*- in  
 Rod Weight 0.0 0.0 0.0 0.0 0.0 0.0 lb

Total Rod Length 0  
 Total Rod Weight 0.00

Damp Up 0.05  
 Damp Down 0.05

**Conditions**

**Pressure**

Static BHP - \*- psi (g)  
 Static BHP Method Acoustic  
 Static BHP Date 05/05/2016

Producing BHP - \*- psi (g)  
 Producing BHP Method - \*-  
 Producing BHP Date - \*-  
 Formation Depth 6000.00 ft

**Surface Producing Pressures**

Tubing Pressure 0.0 psi (g)  
 Casing Pressure 2.6 psi (g)

**Casing Pressure Buildup**

Change in Pressure 0.156 psi  
 Over Change in Time 1.00 min

**Production**

Oil Production - \*- BBL/D  
 Water Production - \*- BBL/D  
 Gas Production - \*- Mscf/D  
 Production Date - \*-

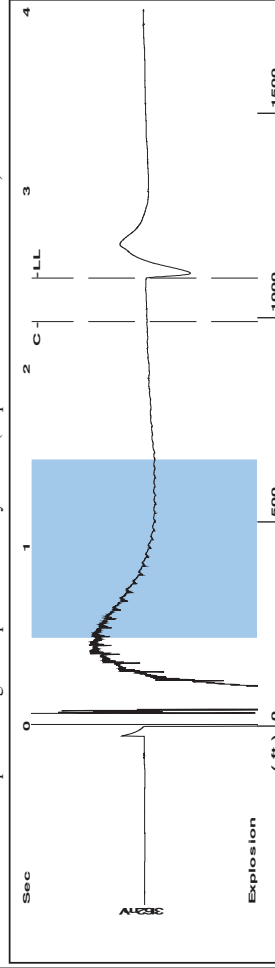
**Temperatures**

Surface Temperature 70 deg F  
 Bottomhole Temperature 150 deg F

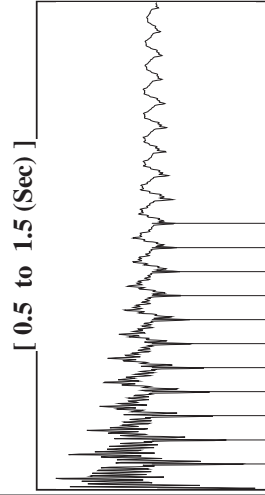
**Fluid Properties**

Oil API 40 deg-API  
 Water Specific Gravity 1.05 Sp.Gr.H2O

Group: Sandridge Group 4 Well: Beyer 1-A (acquired on: 05/05/16 14:35:41)

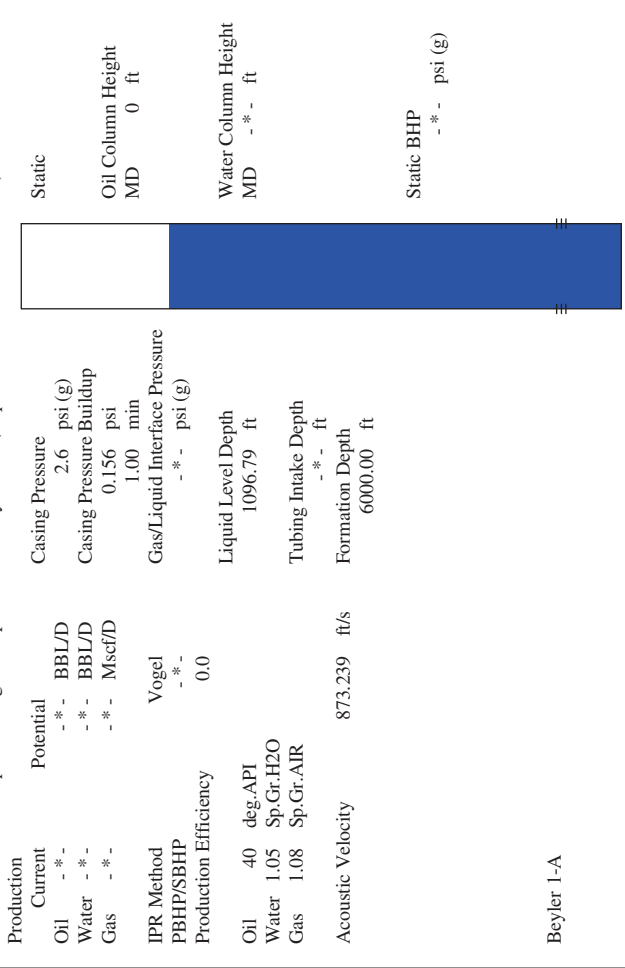


Filter Type High Pass Automatic Collar Count Yes  
Manual Acoustic Veloc 878.543 ft/s Manual JTS/sec 20.2429



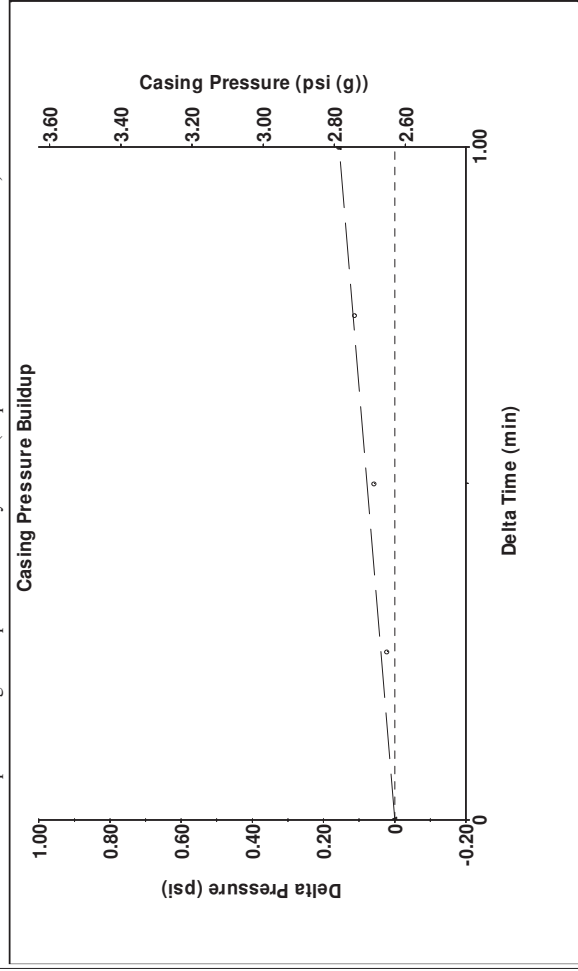
Analysis Method: Automatic

Group: Sandridge Group 4 Well: Beyer 1-A (acquired on: 05/05/16 14:35:41)

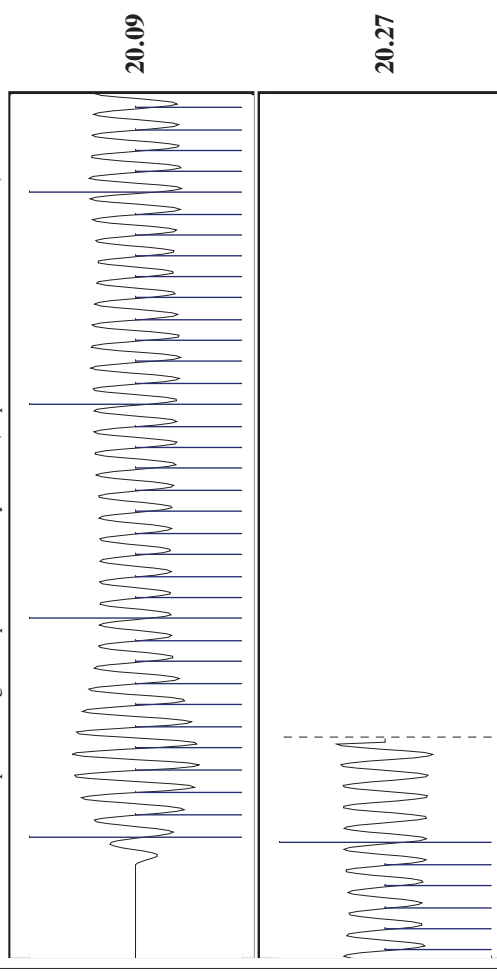


Beyer 1-A

Group: Sandridge Group 4 Well: Beyer 1-A (acquired on: 05/05/16 14:35:41)



Group: Sandridge Group 4 Well: Beyer 1-A (acquired on: 05/05/16 14:35:41)



Acoustic Velocity 873.239 ft/s  
Joints Per Second 20.1207 jts/sec  
Depth to liquid level 1096.79 ft  
Automatic Collar Count Yes

Joints counted 40  
Joints to liquid level 50.5433  
Filter Width 18.2429  
Time to 1st Collar 0.28

Conservation Division  
District Office No. 1  
210 E. Frontview, Suite A  
Dodge City, KS 67801



Phone: 620-225-8888  
Fax: 620-225-8885  
<http://kcc.ks.gov/>

Jay Scott Emler, Chairman  
Shari Feist Albrecht, Commissioner  
Pat Apple, Commissioner

Sam Brownback, Governor

May 17, 2016

Wanda Ledbetter  
SandRidge Exploration and Production LLC  
123 ROBERT S. KERR AVE  
OKLAHOMA CITY, OK 73102-6406

Re: Temporary Abandonment  
API 15-033-21037-00-00  
Beyler 1-A  
NE/4 Sec.11-34S-20W  
Comanche County, Kansas

Dear Wanda Ledbetter:

"Your temporary abandonment (TA) application for the well listed above has been approved. In accordance with K.A.R. 82-3-111 the TA status of this well will expire 05/17/2017.

- \* If you return this well to service or plug it, please notify the District Office.
- \* If you sell this well you are required to file a Transfer of Operator form, T-1.
- \* If the well will remain temporarily abandoned, you must submit a new TA application, CP-111, before 05/17/2017.

You may contact me at the number above if you have questions.

Very truly yours,

Michael Maier"