



TEMPORARY ABANDONMENT WELL APPLICATION

All blanks must be complete

OPERATOR: License# _____
Name: _____
Address 1: _____
Address 2: _____
City: _____ State: _____ Zip: _____ + _____
Contact Person: _____
Phone: (_____) _____
Contact Person Email: _____
Field Contact Person: _____
Field Contact Person Phone: (_____) _____

API No. 15- _____
Spot Description: _____
____ - ____ - ____ - ____ Sec. _____ Twp. _____ S. R. _____ E W
_____ feet from N / S Line of Section
_____ feet from E / W Line of Section
GPS Location: Lat: _____, Long: _____
(e.g. xx.xxxxx) (e.g. -xxx.xxxxx)
Datum: NAD27 NAD83 WGS84
County: _____ Elevation: _____ GL KB
Lease Name: _____ Well #: _____
Well Type: (check one) Oil Gas OG WSW Other: _____
 SWD Permit #: _____ ENHR Permit #: _____
 Gas Storage Permit #: _____
Spud Date: _____ Date Shut-In: _____

	Conductor	Surface	Production	Intermediate	Liner	Tubing
Size						
Setting Depth						
Amount of Cement						
Top of Cement						
Bottom of Cement						

Casing Fluid Level from Surface: _____ How Determined? _____ Date: _____

Casing Squeeze(s): _____ to _____ w / _____ sacks of cement, _____ to _____ w / _____ sacks of cement. Date: _____
(top) (bottom) (top) (bottom)

Do you have a valid Oil & Gas Lease? Yes No

Depth and Type: Junk in Hole at _____ Tools in Hole at _____ Casing Leaks: Yes No Depth of casing leak(s): _____
(depth) (depth)

Type Completion: ALT. I ALT. II Depth of: DV Tool: _____ w / _____ sacks of cement Port Collar: _____ w / _____ sack of cement
(depth) (depth)

Packer Type: _____ Size: _____ Inch Set at: _____ Feet

Total Depth: _____ Plug Back Depth: _____ Plug Back Method: _____

Geological Data:

Formation Name	Formation Top	Formation Base	Completion Information
1. _____	At: _____	to _____ Feet	Perforation Interval _____ to _____ Feet or Open Hole Interval _____ to _____ Feet
2. _____	At: _____	to _____ Feet	Perforation Interval _____ to _____ Feet or Open Hole Interval _____ to _____ Feet

UNDER PENALTY OF PERJURY I HEREBY ATTEST THAT THE INFORMATION CONTAINED HEREIN IS TRUE AND CORRECT TO THE BEST OF MY KNOWLEDGE

Submitted Electronically

Do NOT Write in This Space - KCC USE ONLY	Date Tested: _____	Results: _____	Date Plugged: _____	Date Repaired: _____	Date Put Back in Service: _____
	Review Completed by: _____ Comments: _____				
TA Approved: <input type="checkbox"/> Yes <input type="checkbox"/> Denied Date: _____					

Mail to the Appropriate KCC Conservation Office:

	KCC District Office #1 - 210 E. Frontview, Suite A, Dodge City, KS 67801	Phone 620.225.8888
	KCC District Office #2 / UPGS - 3450 N. Rock Road, Building 600, Suite 601, Wichita, KS 67226	Phone 316.630.4000
	KCC District Office #3 - 1500 SW Seventh Steet, Chanute, KS 66720	Phone 620.432.2300
	KCC District Office #4 - 2301 E. 13th Street, Hays, KS 67601-2651	Phone 785.625.0550

General

Well ID 122007
 Well Biaggi 2520 1-28H
 Company Sandridge
 Operator
 Lease Name Biaggi 2520 1-28H
 Elevation 2256.00 ft
 Production Method Other
 Dataset Description

Comment

Surface Unit

Manufacturer
 Unit Class Conventional
 Unit API Number
 Measured Stroke Length 100.000 in
 Rotation CW
 Counter Balance Effect (Weights Level) - * - Klb
 Weight Of Counter Weights 2000 lb

Prime Mover

Motor Type Electric
 Rated HP - * - HP
 Run Time 24 hr/day
 MFG/Comment - * -

Electric Motor Parameters

Rated Full Load AMPS - * -
 Rated Full Load RPM - * -
 Synchronous RPM 1200
 Voltage - * -
 Hertz 60
 Phase 3
 Power Consumption 5
 Power Demand 8 \$/KW

Tubulars

Tubing OD 2.875 in
 Casing OD 7.000 in
 Average Joint Length 32.700 ft
 Anchor Depth - * - ft
 Kelly Bushing 11.00 ft

Rod String

Top Taper
 Rod Type - * - Taper 2
 Rod Length - * - Taper 3
 Rod Diameter - * - Taper 4
 Rod Weight 0.0 Taper 5
 0.0 Taper 6
 0.0
 0.05
 0.05

Pump

Plunger Diameter - * - in
 Pump Intake Depth - * - ft
 **Total Rod Length > Pump Depth

Polished Rod

Polished Rod Diameter - * - in

Conditions

Pressure

Static BHP 1826.5 psi (g)
 Static BHP Method Acoustic
 Static BHP Date 05/05/2016

Producing BHP

Producing BHP Method - * -
 Producing BHP Date - * -
 Formation Depth 5390.00 ft

Surface Producing Pressures

Tubing Pressure 400.0 psi (g)
 Casing Pressure 9.6 psi (g)

Casing Pressure Buildup

Change in Pressure 0.088 psi
 Over Change in Time 1.50 min

Production

Oil Production - * - BBL/D
 Water Production - * - BBL/D
 Gas Production - * - Mscf/D
 Production Date - * -

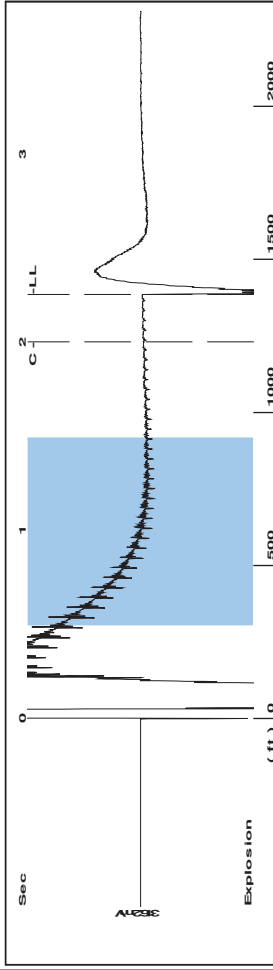
Temperatures

Surface Temperature 70 deg F
 Bottomhole Temperature 150 deg F

Fluid Properties

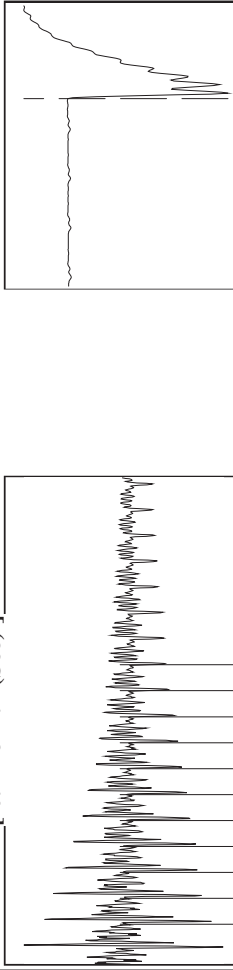
Oil API 40 deg-API
 Water Specific Gravity 1.05 Sp.Gr.H2O

Group: Sandridge Group 4 Well: Biaggi 2520 1-28H (acquired on: 05/05/16 18:57:30)



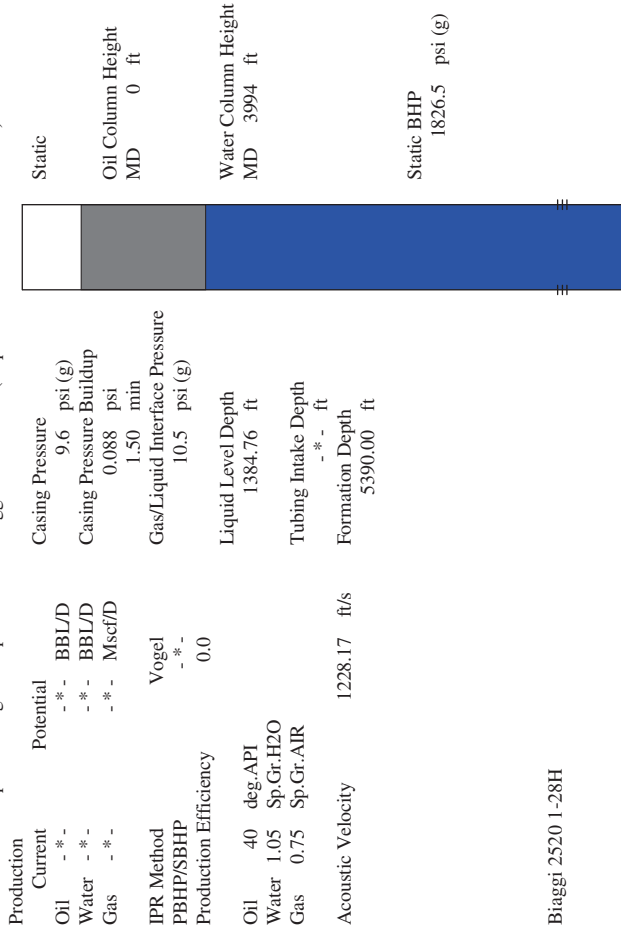
Filter Type High Pass Automatic Collar Count Yes Time 2.255 sec
Manual Acoustic Veloc 1227.02 ft/s Manual JTS/sec 18.7617 Joints 42.3474 Jts
Depth 1384.76 ft

[0.5 to 1.5 (Sec)]



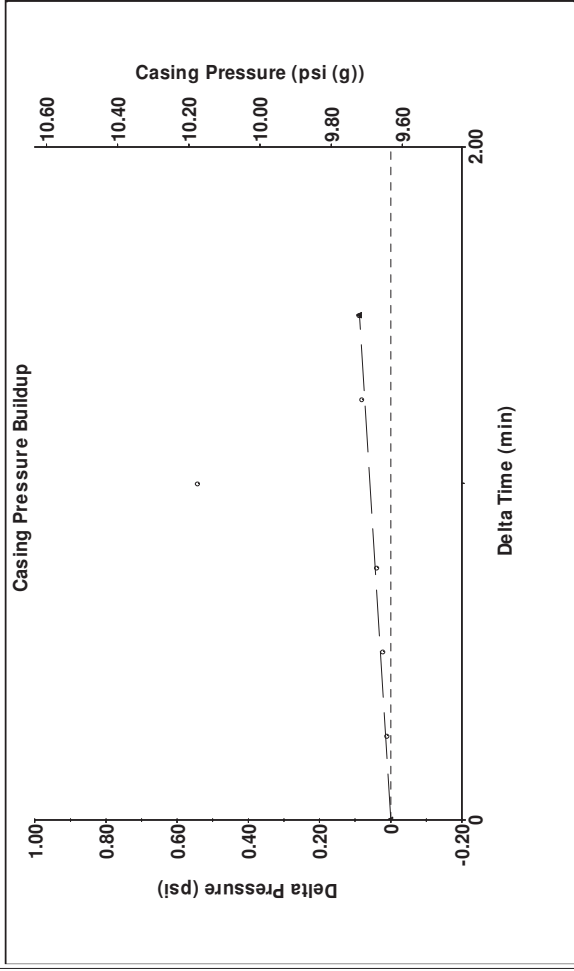
Analysis Method: Automatic

Group: Sandridge Group 4 Well: Biaggi 2520 1-28H (acquired on: 05/05/16 18:57:30)



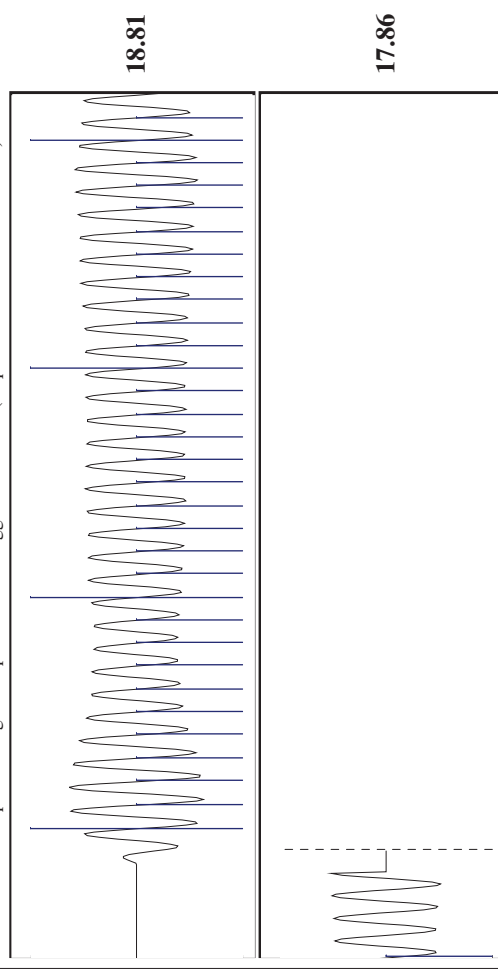
Biaggi 2520 1-28H

Group: Sandridge Group 4 Well: Biaggi 2520 1-28H (acquired on: 05/05/16 18:57:30)



Change in Pressure 0.09 psi PT16722 Range
Change in Time 1.50 min

Group: Sandridge Group 4 Well: Biaggi 2520 1-28H (acquired on: 05/05/16 18:57:30)



Acoustic Velocity 1228.17 ft/s Joints counted 32
Joints Per Second 18.7793 jts/sec Joints to liquid level 42.3474
Depth to liquid level 1384.76 ft Filter Width 20.7617
Automatic Collar Count Yes Time to 1st Collar 0.3 2.004

Conservation Division
District Office No. 1
210 E. Frontview, Suite A
Dodge City, KS 67801



Phone: 620-225-8888
Fax: 620-225-8885
<http://kcc.ks.gov/>

Jay Scott Emler, Chairman
Shari Feist Albrecht, Commissioner
Pat Apple, Commissioner

Sam Brownback, Governor

May 17, 2016

Wanda Ledbetter
SandRidge Exploration and Production LLC
123 ROBERT S. KERR AVE
OKLAHOMA CITY, OK 73102-6406

Re: Temporary Abandonment
API 15-047-21623-01-00
Biaggi 2520 1-28H
SE/4 Sec.28-25S-20W
Edwards County, Kansas

Dear Wanda Ledbetter:

"Your temporary abandonment (TA) application for the well listed above has been approved. In accordance with K.A.R. 82-3-111 the TA status of this well will expire 05/17/2017.

- * If you return this well to service or plug it, please notify the District Office.
- * If you sell this well you are required to file a Transfer of Operator form, T-1.
- * If the well will remain temporarily abandoned, you must submit a new TA application, CP-111, before 05/17/2017.

You may contact me at the number above if you have questions.

Very truly yours,

Michael Maier"