



TEMPORARY ABANDONMENT WELL APPLICATION

OPERATOR: License# _____
 Name: _____
 Address 1: _____
 Address 2: _____
 City: _____ State: _____ Zip: _____ + _____
 Contact Person: _____
 Phone: (_____) _____
 Contact Person Email: _____
 Field Contact Person: _____
 Field Contact Person Phone: (_____) _____

API No. 15- _____
 Spot Description: _____
 _____ - _____ - _____ - _____ Sec. _____ Twp. _____ S. R. _____ E W
 _____ feet from N / S Line of Section
 _____ feet from E / W Line of Section
 GPS Location: Lat: _____, Long: _____
(e.g. xx.xxxxx) (e.g. -xxx.xxxxx)
 Datum: NAD27 NAD83 WGS84
 County: _____ Elevation: _____ GL KB
 Lease Name: _____ Well #: _____
 Well Type: (check one) Oil Gas OG WSW Other: _____
 SWD Permit #: _____ ENHR Permit #: _____
 Gas Storage Permit #: _____
 Spud Date: _____ Date Shut-In: _____

	Conductor	Surface	Production	Intermediate	Liner	Tubing
Size						
Setting Depth						
Amount of Cement						
Top of Cement						
Bottom of Cement						

Casing Fluid Level from Surface: _____ How Determined? _____ Date: _____

Casing Squeeze(s): _____ to _____ w / _____ sacks of cement, _____ to _____ w / _____ sacks of cement. Date: _____
(top) (bottom) (top) (bottom)

Do you have a valid Oil & Gas Lease? Yes No

Depth and Type: Junk in Hole at _____ Tools in Hole at _____ Casing Leaks: Yes No Depth of casing leak(s): _____
(depth) (depth)

Type Completion: ALT. I ALT. II Depth of: DV Tool: _____ w / _____ sacks of cement Port Collar: _____ w / _____ sack of cement
(depth) (depth)

Packer Type: _____ Size: _____ Inch Set at: _____ Feet

Total Depth: _____ Plug Back Depth: _____ Plug Back Method: _____

Geological Data:

Formation Name	Formation Top	Formation Base	Completion Information
1. _____	At: _____	to _____ Feet	Perforation Interval _____ to _____ Feet or Open Hole Interval _____ to _____ Feet
2. _____	At: _____	to _____ Feet	Perforation Interval _____ to _____ Feet or Open Hole Interval _____ to _____ Feet

~~UNDER PENALTY OF PERJURY I HEREBY ATTEST THAT THE INFORMATION CONTAINED HEREIN IS TRUE AND CORRECT TO THE BEST OF MY KNOWLEDGE~~

Submitted Electronically

Do NOT Write in This Space - KCC USE ONLY	Date Tested: _____	Results: _____	Date Plugged: _____	Date Repaired: _____	Date Put Back in Service: _____
	Review Completed by: _____ Comments: _____				
TA Approved: <input type="checkbox"/> Yes <input type="checkbox"/> Denied Date: _____					

Mail to the Appropriate KCC Conservation Office:

	KCC District Office #1 - 210 E. Frontview, Suite A, Dodge City, KS 67801	Phone 620.225.8888
	KCC District Office #2 / UPGS - 3450 N. Rock Road, Building 600, Suite 601, Wichita, KS 67226	Phone 316.630.4000
	KCC District Office #3 - 1500 SW Seventh Steet, Chanute, KS 66720	Phone 620.432.2300
	KCC District Office #4 - 2301 E. 13th Street, Hays, KS 67601-2651	Phone 785.625.0550

General

Well ID 126027
 Well Joseph 3405 1-IH
 Company Sandridge
 Operator - *-
 Lease Name Joseph 3405 1-IH
 Elevation 1251.00 ft
 Production Method Other
 Dataset Description

Comment

Surface Unit

Manufacturer - *-
 Unit Class Conventional
 Unit API Number - *-
 Measured Stroke Length 100.000 in
 Rotation CW
 Counter Balance Effect (Weights Level) - *-
 Weight Of Counter Weights 2000 Klb

Prime Mover

Motor Type Electric
 Rated HP - *- HP
 Run Time 24 hr/day
 MFG/Comment - *-

Electric Motor Parameters

Rated Full Load AMPS - *-
 Rated Full Load RPM - *-
 Synchronous RPM 1200
 Voltage - *-
 Hertz 60
 Phase 3
 Power Consumption 5
 Power Demand 8 \$/KW

Tubulars

Tubing OD 3.500 in
 Casing OD 7.000 in
 Average Joint Length 31.700 ft
 Anchor Depth - *- ft
 Kelly Bushing 16.00 ft

Rod String

Top Taper - *-
 Rod Type - *-
 Rod Length - *-
 Rod Diameter - *-
 Rod Weight 0.0
 Total Rod Length 0
 Total Rod Weight 0.00
 Damp Up 0.05
 Damp Down 0.05

Pump

Plunger Diameter - *- in
 Pump Intake Depth - *- ft
 **Total Rod Length > Pump Depth

Polished Rod

Polished Rod Diameter - *- in

Taper 2 - *-
 Taper 3 - *-
 Taper 4 - *-
 Taper 5 - *-
 Taper 6 - *-
 0.0
 0.0
 0.0
 0.0
 0.0
 0.0

Conditions

Pressure

Static BHP 1308.2 psi (g)
 Static BHP Method Acoustic
 Static BHP Date 05/05/2016

Producing BHP

Producing BHP - *- psi (g)
 Producing BHP Method - *-
 Producing BHP Date - *-
 Formation Depth 5171.00 ft

Surface Producing Pressures

Tubing Pressure 341.0 psi (g)
 Casing Pressure 167.4 psi (g)

Casing Pressure Buildup

Change in Pressure 6.9 psi
 Over Change in Time 2.00 min

Production

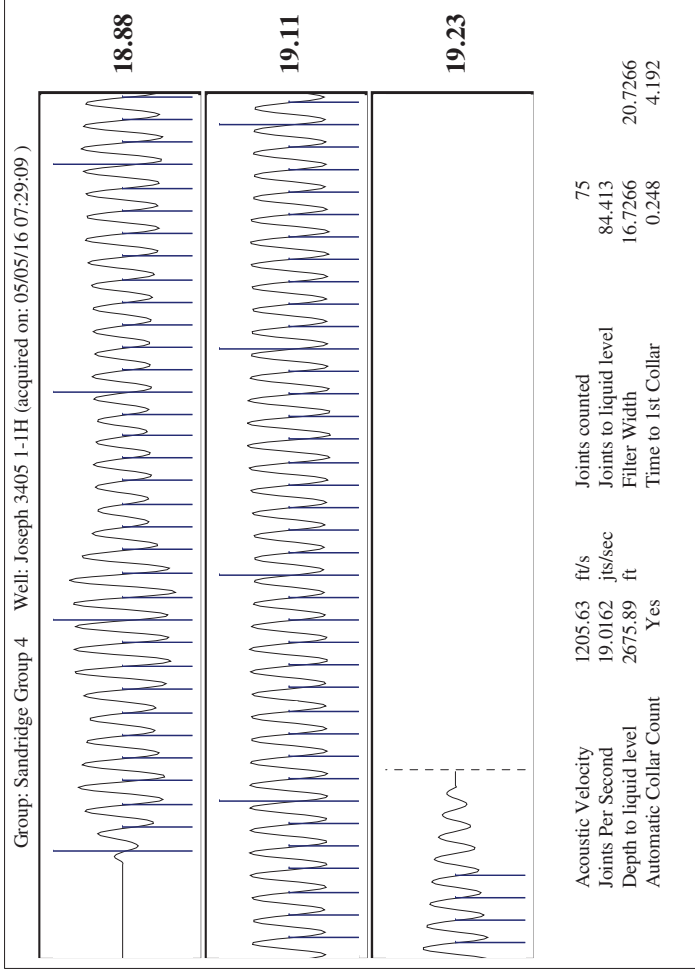
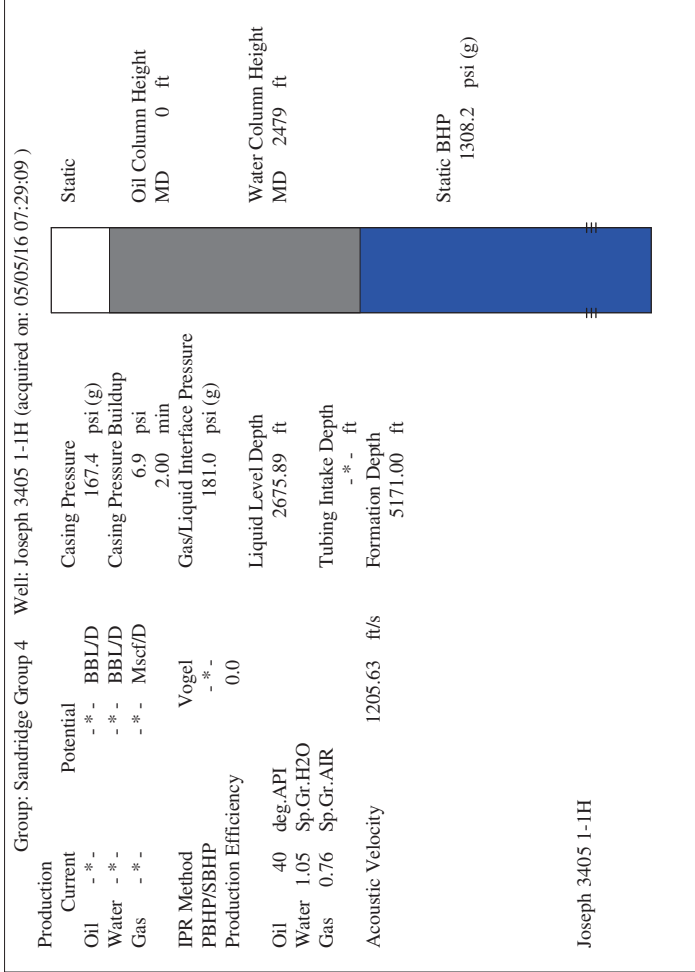
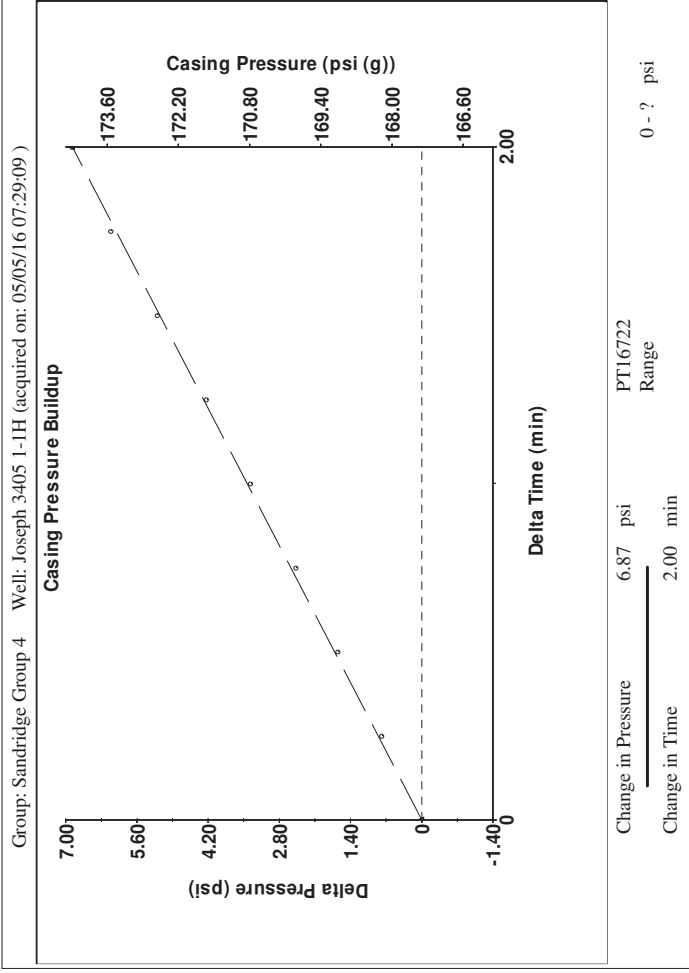
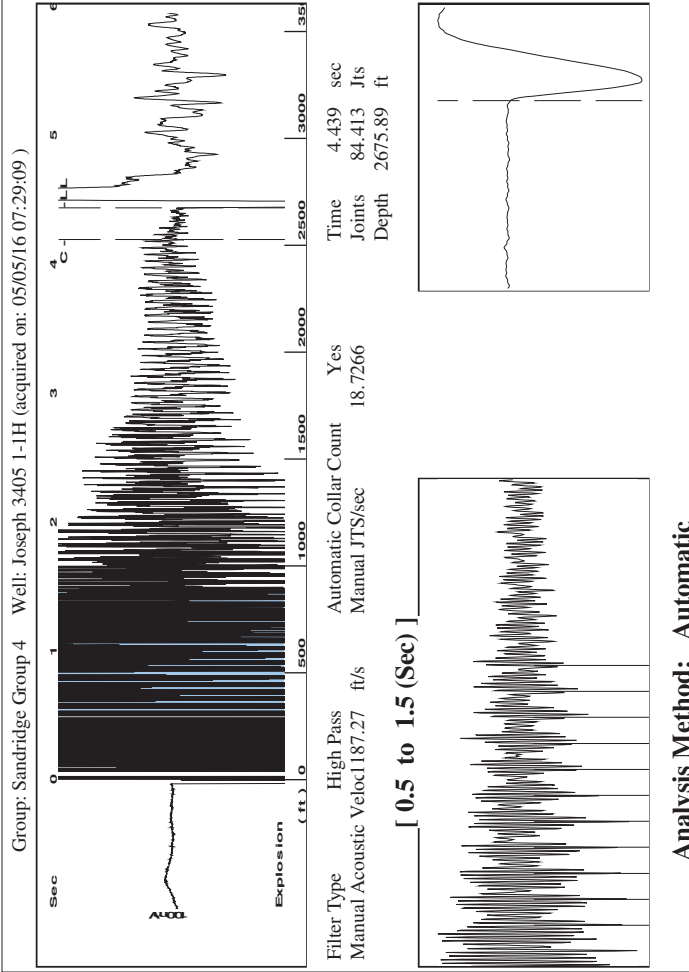
Oil Production - *- BBL/D
 Water Production - *- BBL/D
 Gas Production - *- Mscf/D
 Production Date - *-

Temperatures

Surface Temperature 70 deg F
 Bottomhole Temperature 150 deg F

Fluid Properties

Oil API 40 deg-API
 Water Specific Gravity 1.05 Sp.Gr.H2O



Conservation Division
District Office No. 2
3450 N. Rock Road
Building 600, Suite 601
Wichita, KS 67226



Phone: 316-630-4000
Fax: 316-630-4005
<http://kcc.ks.gov/>

Jay Scott Emler, Chairman
Shari Feist Albrecht, Commissioner
Pat Apple, Commissioner

Sam Brownback, Governor

May 12, 2016

Wanda Ledbetter
SandRidge Exploration and Production LLC
123 ROBERT S. KERR AVE
OKLAHOMA CITY, OK 73102-6406

Re: Temporary Abandonment
API 15-077-21976-02-00
Joseph 3405 1-1H 1L
SE/4 Sec.36-33S-05W
Harper County, Kansas

Dear Wanda Ledbetter:

"Your temporary abandonment (TA) application for the well listed above has been approved. In accordance with K.A.R. 82-3-111 the TA status of this well will expire 05/12/2017.

- * If you return this well to service or plug it, please notify the District Office.
- * If you sell this well you are required to file a Transfer of Operator form, T-1.
- * If the well will remain temporarily abandoned, you must submit a new TA application, CP-111, before 05/12/2017.

You may contact me at the number above if you have questions.

Very truly yours,

Steve VanGieson"