



TEMPORARY ABANDONMENT WELL APPLICATION

All blanks must be complete

OPERATOR: License# _____
 Name: _____
 Address 1: _____
 Address 2: _____
 City: _____ State: _____ Zip: _____ + _____
 Contact Person: _____
 Phone: (_____) _____
 Contact Person Email: _____
 Field Contact Person: _____
 Field Contact Person Phone: (_____) _____

API No. 15- _____
 Spot Description: _____
 _____ - _____ - _____ - _____ Sec. _____ Twp. _____ S. R. _____ E W
 _____ feet from N / S Line of Section
 _____ feet from E / W Line of Section
 GPS Location: Lat: _____, Long: _____
(e.g. xx.xxxxx) (e.g. -xxx.xxxxx)
 Datum: NAD27 NAD83 WGS84
 County: _____ Elevation: _____ GL KB
 Lease Name: _____ Well #: _____
 Well Type: (check one) Oil Gas OG WSW Other: _____
 SWD Permit #: _____ ENHR Permit #: _____
 Gas Storage Permit #: _____
 Spud Date: _____ Date Shut-In: _____

	Conductor	Surface	Production	Intermediate	Liner	Tubing
Size						
Setting Depth						
Amount of Cement						
Top of Cement						
Bottom of Cement						

Casing Fluid Level from Surface: _____ How Determined? _____ Date: _____

Casing Squeeze(s): _____ to _____ w / _____ sacks of cement, _____ to _____ w / _____ sacks of cement. Date: _____
(top) (bottom) (top) (bottom)

Do you have a valid Oil & Gas Lease? Yes No

Depth and Type: Junk in Hole at _____ Tools in Hole at _____ Casing Leaks: Yes No Depth of casing leak(s): _____
(depth) (depth)

Type Completion: ALT. I ALT. II Depth of: DV Tool: _____ w / _____ sacks of cement Port Collar: _____ w / _____ sack of cement
(depth) (depth)

Packer Type: _____ Size: _____ Inch Set at: _____ Feet

Total Depth: _____ Plug Back Depth: _____ Plug Back Method: _____

Geological Data:

Formation Name	Formation Top	Formation Base	Completion Information
1. _____	At: _____	to _____ Feet	Perforation Interval _____ to _____ Feet or Open Hole Interval _____ to _____ Feet
2. _____	At: _____	to _____ Feet	Perforation Interval _____ to _____ Feet or Open Hole Interval _____ to _____ Feet

UNDER PENALTY OF PERJURY I HEREBY ATTEST THAT THE INFORMATION CONTAINED HEREIN IS TRUE AND CORRECT TO THE BEST OF MY KNOWLEDGE

Submitted Electronically

Do NOT Write in This Space - KCC USE ONLY	Date Tested: _____	Results: _____	Date Plugged: _____	Date Repaired: _____	Date Put Back in Service: _____
	Review Completed by: _____ Comments: _____				
TA Approved: <input type="checkbox"/> Yes <input type="checkbox"/> Denied Date: _____					

Mail to the Appropriate KCC Conservation Office:

	KCC District Office #1 - 210 E. Frontview, Suite A, Dodge City, KS 67801	Phone 620.225.8888
	KCC District Office #2 / UPGS - 3450 N. Rock Road, Building 600, Suite 601, Wichita, KS 67226	Phone 316.630.4000
	KCC District Office #3 - 1500 SW Seventh Steet, Chanute, KS 66720	Phone 620.432.2300
	KCC District Office #4 - 2301 E. 13th Street, Hays, KS 67601-2651	Phone 785.625.0550

General

Well ID 121863
 Well Larry 3119 2-30H
 Company Sandridge
 Operator - *-
 Lease Name Larry 3119 2-30H
 Elevation 2136.00 ft
 Production Method Other
 Dataset Description

Comment

Surface Unit

Manufacturer - *-
 Unit Class Conventional
 Unit API Number - *-
 Measured Stroke Length - *- in
 Rotation CW
 Counter Balance Effect (Weights Level) - *- Klb
 Weight Of Counter Weights 2000 lb

Prime Mover

Motor Type Electric
 Rated HP - *- HP
 Run Time 24 hr/day
 MFG/Comment - *-

Electric Motor Parameters

Rated Full Load AMPS - *-
 Rated Full Load RPM - *-
 Synchronous RPM 1200
 Voltage - *-
 Hertz 60
 Phase 3
 Power Consumption 5
 Power Demand 8 \$/KW

Tubulars

Tubing OD 2.875 in
 Casing OD 7.000 in
 Average Joint Length 29.300 ft
 Anchor Depth - *- ft
 Kelly Bushing 21.00 ft

Rod String

Top Taper	Taper 2	Taper 3	Taper 4	Taper 5	Taper 6
- *-	- *-	- *-	- *-	- *-	- *-
- *-	- *-	- *-	- *-	- *-	- *-
- *-	- *-	- *-	- *-	- *-	- *-
0.0	0.0	0.0	0.0	0.0	0.0

Polished Rod Diameter - *- in

Total Rod Length 0
 Total Rod Weight 0.00

Damp Up 0.05
 Damp Down 0.05

Pump

Plunger Diameter - *- in
 Pump Intake Depth - *- ft
 **Total Rod Length > Pump Depth

Polished Rod

Conditions

Pressure
 Static BHP 880.0 psi (g)
 Static BHP Method Acoustic
 Static BHP Date 05/05/2016
 Producing BHP 889.5 psi (g)
 Producing BHP Method Acoustic
 Producing BHP Date 05/05/2016
 Formation Depth 5714.00 ft

Temperatures

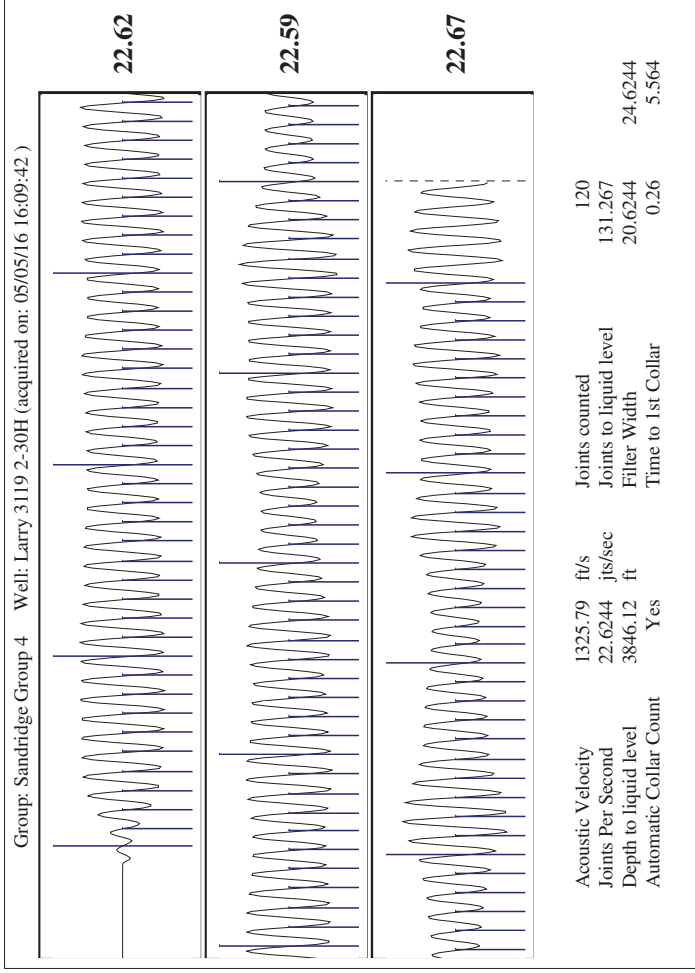
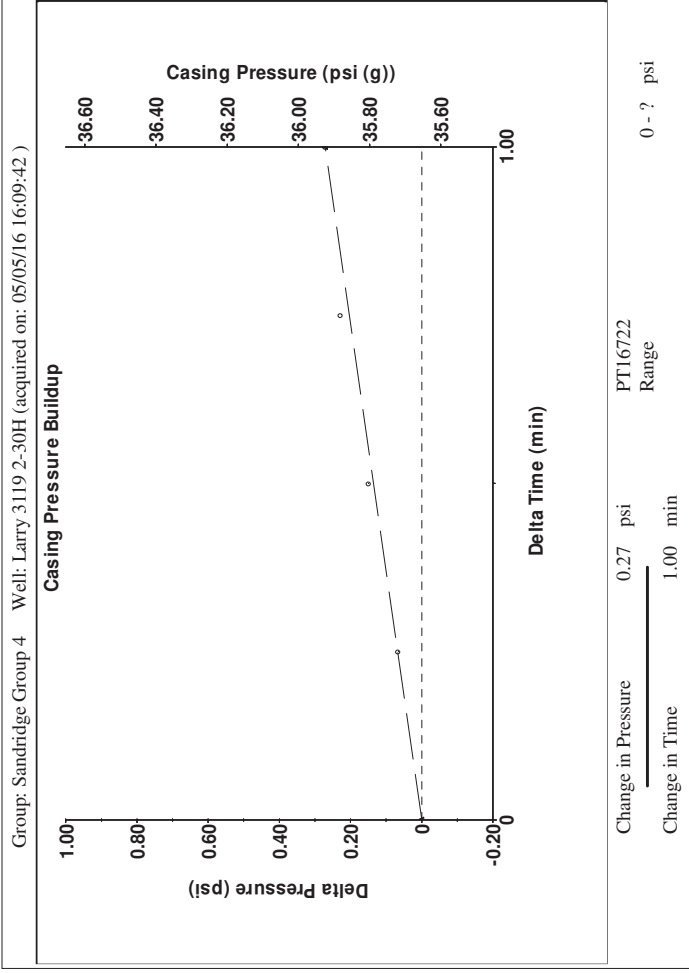
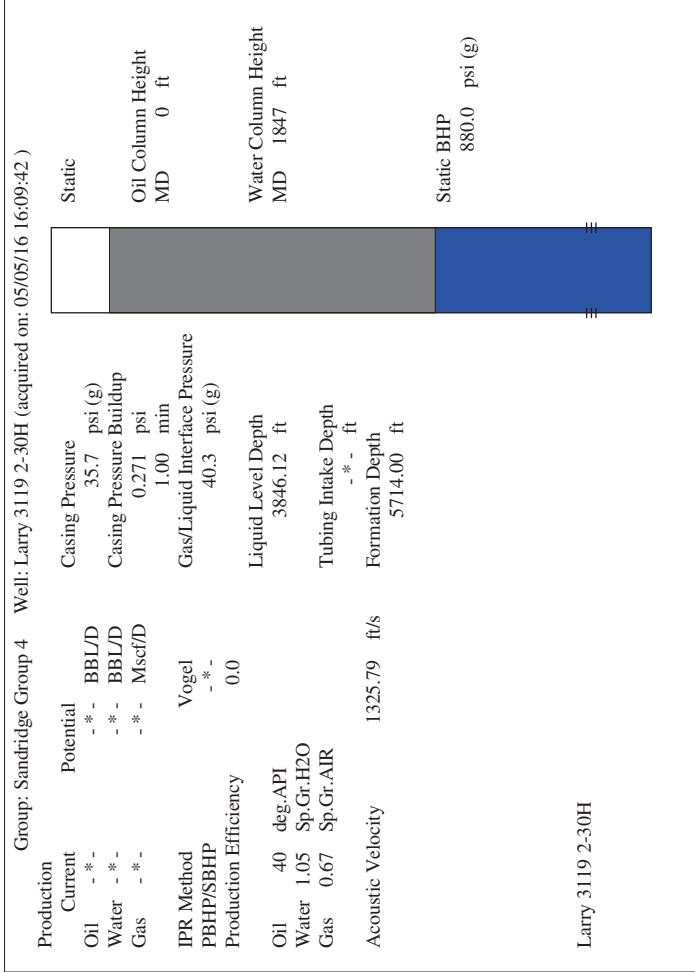
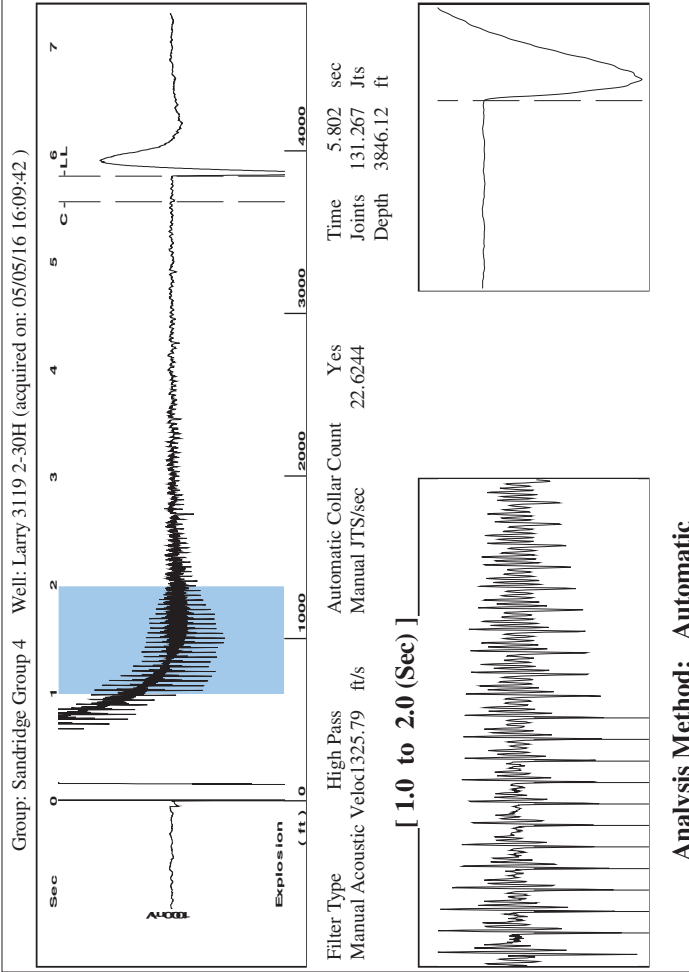
Surface Temperature 70 deg F
 Bottomhole Temperature 150 deg F
Fluid Properties
 Oil API 40 deg-API
 Water Specific Gravity 1.05 Sp.Gr.H2O

Surface Producing Pressures

Tubing Pressure 25.0 psi (g)
 Casing Pressure 35.7 psi (g)

Casing Pressure Buildup

Change in Pressure 0.271 psi
 Over Change in Time 1.00 min



Conservation Division
District Office No. 1
210 E. Frontview, Suite A
Dodge City, KS 67801



Phone: 620-225-8888
Fax: 620-225-8885
<http://kcc.ks.gov/>

Jay Scott Emler, Chairman
Shari Feist Albrecht, Commissioner
Pat Apple, Commissioner

Sam Brownback, Governor

May 17, 2016

Wanda Ledbetter
SandRidge Exploration and Production LLC
123 ROBERT S. KERR AVE
OKLAHOMA CITY, OK 73102-6406

Re: Temporary Abandonment
API 15-033-21665-01-00
Larry 3119 2-30H
SE/4 Sec.30-31S-19W
Comanche County, Kansas

Dear Wanda Ledbetter:

"Your temporary abandonment (TA) application for the well listed above has been approved. In accordance with K.A.R. 82-3-111 the TA status of this well will expire 05/17/2017.

- * If you return this well to service or plug it, please notify the District Office.
- * If you sell this well you are required to file a Transfer of Operator form, T-1.
- * If the well will remain temporarily abandoned, you must submit a new TA application, CP-111, before 05/17/2017.

You may contact me at the number above if you have questions.

Very truly yours,

Michael Maier"