



TEMPORARY ABANDONMENT WELL APPLICATION

All blanks must be complete

OPERATOR: License# _____
 Name: _____
 Address 1: _____
 Address 2: _____
 City: _____ State: _____ Zip: _____ + _____
 Contact Person: _____
 Phone: (_____) _____
 Contact Person Email: _____
 Field Contact Person: _____
 Field Contact Person Phone: (_____) _____

API No. 15- _____
 Spot Description: _____
 _____ - _____ - _____ - _____ Sec. _____ Twp. _____ S. R. _____ E W
 _____ feet from N / S Line of Section
 _____ feet from E / W Line of Section
 GPS Location: Lat: _____, Long: _____
(e.g. xx.xxxxx) (e.g. -xxx.xxxxx)
 Datum: NAD27 NAD83 WGS84
 County: _____ Elevation: _____ GL KB
 Lease Name: _____ Well #: _____
 Well Type: (check one) Oil Gas OG WSW Other: _____
 SWD Permit #: _____ ENHR Permit #: _____
 Gas Storage Permit #: _____
 Spud Date: _____ Date Shut-In: _____

	Conductor	Surface	Production	Intermediate	Liner	Tubing
Size						
Setting Depth						
Amount of Cement						
Top of Cement						
Bottom of Cement						

Casing Fluid Level from Surface: _____ How Determined? _____ Date: _____
 Casing Squeeze(s): _____ to _____ w / _____ sacks of cement, _____ to _____ w / _____ sacks of cement. Date: _____
(top) (bottom) (top) (bottom)
 Do you have a valid Oil & Gas Lease? Yes No
 Depth and Type: Junk in Hole at _____ Tools in Hole at _____ Casing Leaks: Yes No Depth of casing leak(s): _____
(depth) (depth)
 Type Completion: ALT. I ALT. II Depth of: DV Tool: _____ w / _____ sacks of cement Port Collar: _____ w / _____ sack of cement
(depth) (depth)
 Packer Type: _____ Size: _____ Inch Set at: _____ Feet
 Total Depth: _____ Plug Back Depth: _____ Plug Back Method: _____

Geological Data:

Formation Name	Formation Top	Formation Base	Completion Information
1. _____	At: _____	to _____ Feet	Perforation Interval _____ to _____ Feet or Open Hole Interval _____ to _____ Feet
2. _____	At: _____	to _____ Feet	Perforation Interval _____ to _____ Feet or Open Hole Interval _____ to _____ Feet

UNDER PENALTY OF PERJURY I HEREBY ATTEST THAT THE INFORMATION CONTAINED HEREIN IS TRUE AND CORRECT TO THE BEST OF MY KNOWLEDGE

Submitted Electronically

Do NOT Write in This Space - KCC USE ONLY

Date Tested: _____ Results: _____ Date Plugged: _____ Date Repaired: _____ Date Put Back in Service: _____

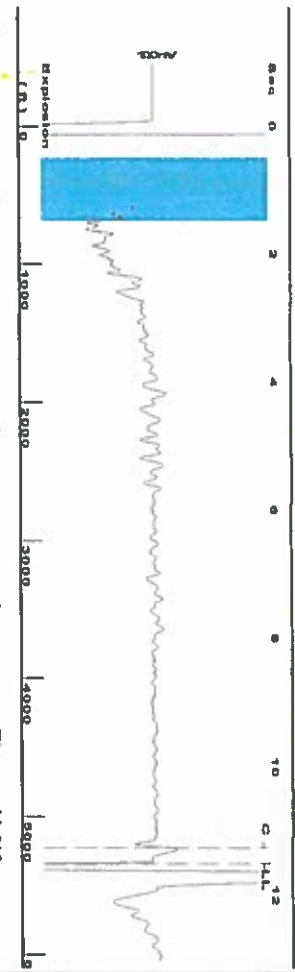
Review Completed by: _____ Comments: _____

TA Approved: Yes Denied Date: _____

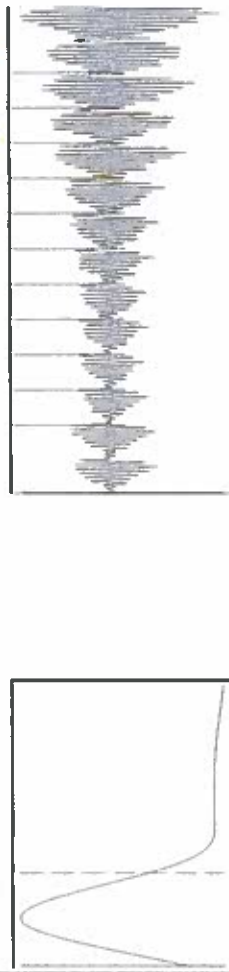
Mail to the Appropriate KCC Conservation Office:

	KCC District Office #1 - 210 E. Frontview, Suite A, Dodge City, KS 67801	Phone 620.225.8888
	KCC District Office #2 / UPGS - 3450 N. Rock Road, Building 600, Suite 601, Wichita, KS 67226	Phone 316.630.4000
	KCC District Office #3 - 1500 SW Seventh Steet, Chanute, KS 66720	Phone 620.432.2300
	KCC District Office #4 - 2301 E. 13th Street, Hays, KS 67601-2651	Phone 785.625.0550

Group: Oxy USA Ulysses Well: Wright C-1 (acquired on: 05/18/15 15:20:19)



Filter Type High Pass Automatic Collar Count Yes
 Manual Acoustic Vel: 875.691 ft/s Manual JTS/sec 13.8122
 Time 11.513 sec
 Joints 168.508 Jts
 Depth 5341.72 ft



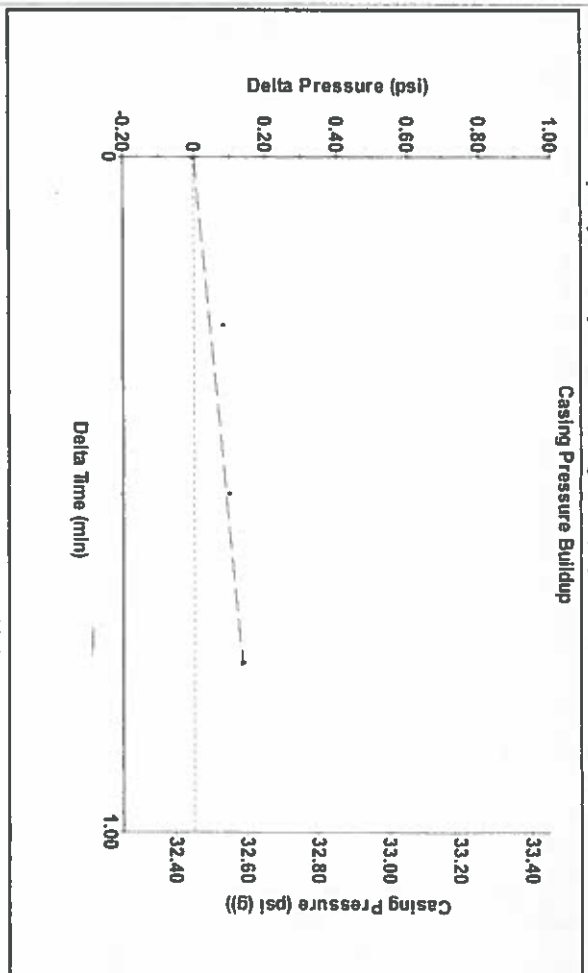
Analysis Method: Automatic

Group: Oxy USA Ulysses Well: Wright C-1 (acquired on: 05/18/15 15:20:19)

Production	Potential	Casing Pressure	Producing
Current	BB/LD	32.5 psi (g)	Annular
Oil	BB/LD	Casing Pressure Buildup	Gas Flow
Water	BB/LD	0.1 psi	% Liquid
Gas	Misc/D	0.75 min	100 %
IPR Method	Vogel	Gas/Liquid Interface Pressure	
FBHP/SBHP	0.0	42.2 psi (g)	
Production Efficiency		Liquid Level Depth	
		5341.72 ft	
Oil	40 deg API	Pump Intake Depth	
Water	1.05 Sp.Gr./H2O	5349.00 ft	
Gas	1.05 Sp.Gr./AIR	Formation Depth	
		5332.00 ft	
Acoustic Velocity	927.945 ft/s		

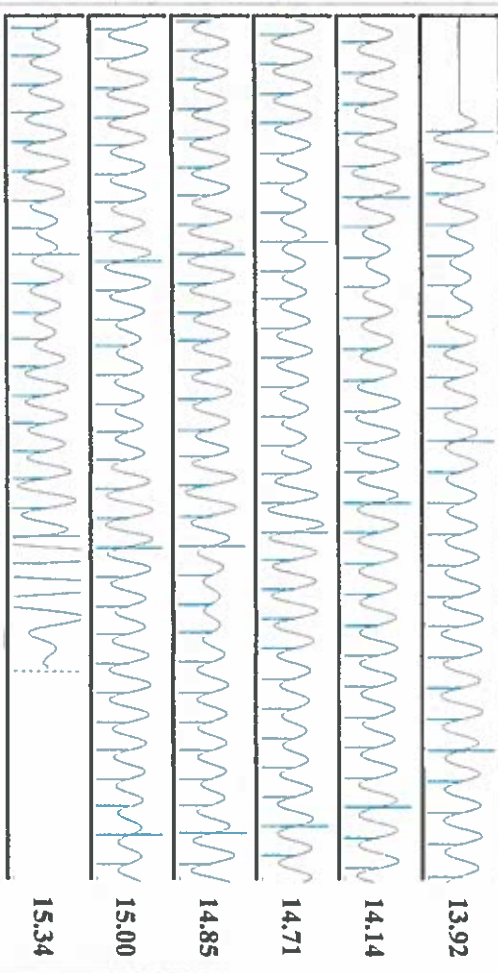
Formation Submergence	Equivalent Gas Free Liquid HT (TVD)
Total Gaseous Liquid Column HT (TVD)	7 ft
Acoustic Test	
Tim Frydendall-Fluid Level Technician	

Group: Oxy USA Ulysses Well: Wright C-1 (acquired on: 05/18/15 15:20:19)



Change in Pressure 0.13 psi PTT14654
 Change in Time 0.75 min Range 0 - 7 psi

Group: Oxy USA Ulysses Well: Wright C-1 (acquired on: 05/18/15 15:20:19)



Acoustic Velocity	Joints Per Second	Depth to liquid level	Automatic Collar Count	Joints counted	Joints to liquid level	Filter Width	Time to 1st Collar
927.945 ft/s	14.6364 Jts/sec	5341.72 ft	Yes	161	168.508	11.8122	15.8122
						0.264	11.264

Conservation Division
District Office No. 1
210 E. Frontview, Suite A
Dodge City, KS 67801



Phone: 620-225-8888
Fax: 620-225-8885
<http://kcc.ks.gov/>

Jay Scott Emler, Chairman
Shari Feist Albrecht, Commissioner
Pat Apple, Commissioner

Sam Brownback, Governor

July 05, 2016

Katherine McClurkan
Merit Energy Company, LLC
13727 Noel Raod, Suite 1200
Dallas, TX 75240

Re: Temporary Abandonment
API 15-081-20471-00-00
Wright C 1
SW/4 Sec.13-29S-33W
Haskell County, Kansas

Dear Katherine McClurkan:

"Your temporary abandonment (TA) application for the well listed above has been approved. In accordance with K.A.R. 82-3-111 the TA status of this well will expire 07/05/2017.

- * If you return this well to service or plug it, please notify the District Office.
- * If you sell this well you are required to file a Transfer of Operator form, T-1.
- * If the well will remain temporarily abandoned, you must submit a new TA application, CP-111, before 07/05/2017.

You may contact me at the number above if you have questions.

Very truly yours,

Michael Maier"