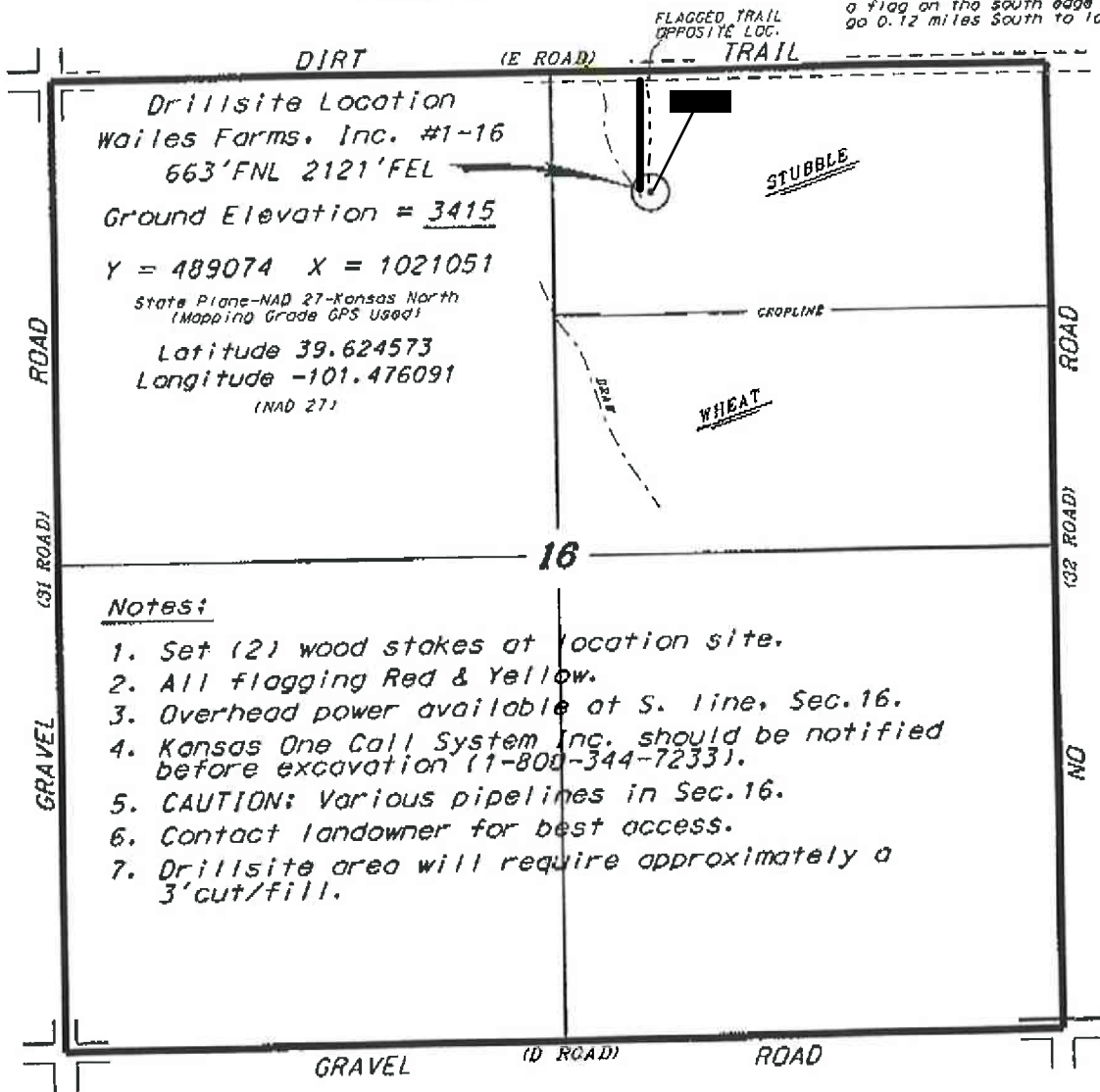


L.D. DRILLING, INC.  
WAILES FARMS, INC. LEASE  
NE. 1/4, SECTION 16, T5S, R37W  
CHEYENNE COUNTY, KANSAS

Directions:

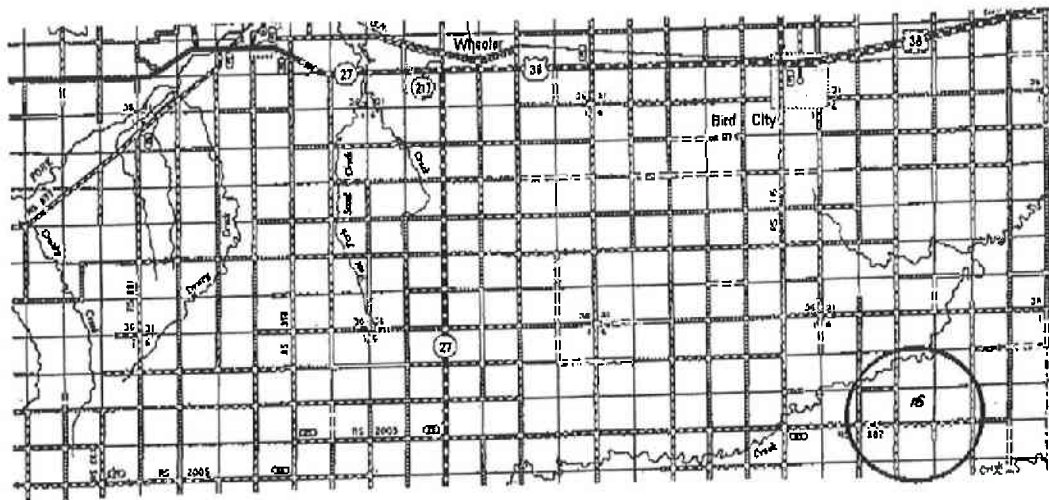
From the intersection of Highway 161 and Highway 36 (in Bird City, Kansas) go 3.0 miles East on Highway 36, then go 9.5 miles South to the NW corner of Section 16, then go 0.59 miles East to a flag on the south edge of trail, then go 0.12 miles South to location.



Notes:

1. Set (2) wood stakes at location site.
2. All flagging Red & Yellow.
3. Overhead power available at S. line, Sec. 16.
4. Kansas One Call System Inc. should be notified before excavation (1-800-344-7233).
5. CAUTION: Various pipelines in Sec. 16.
6. Contact landowner for best access.
7. Drillsite area will require approximately a 3' cut/fill.

\*Access and egress to location as shown on this plot is for usage only and may not be legally opened for public use. Contact landowner, tenant and county road department for access.



- Controlling data is based upon the best maps and photographs available to us and upon a regular section of land containing 640 acres.
- Approximate section lines were determined using the normal standards of care of oilfield surveyors practicing in the state of Kansas. The section corners, which establish the precise section lines, were not necessarily located, and the exact location of the drillsite location in the section is not guaranteed. Therefore, the operator securing this service and accepting this plot and all other services relying thereon agree to hold Central Kansas Oilfield Services, Inc., its officers and employees harmless from all losses, costs and expenses and avoid entities released from any liability from incidental or consequential damages.
- Elevations derived from National Geodetic Vertical Datum.

Date April 25, 2016

CENTRAL KANSAS OILFIELD SERVICES, INC. (620)792-1977

Handwritten signature and date: *Handwritten Signature*  
5-2-16