



Joshua R. Austin

Petroleum Geologist

report for



Lebsack Oil Production, Inc.

COMPANY: LEBSACK OIL PRODUCTION INC.

LEASE: Bensch #4

FIELD: GROVE

SURFACE LOCATION: 3420' FNL & 330' FEL (N2-SE-NE-SE)

SEC: 33 TWSP: 20s RGE: 10w

COUNTY: RICE STATE: KANSAS

KB: 1729' GL: 1718'

API # 15-159-22830-0000

CONTRACTOR: STERLING DRILLING COMPANY (Rig #4)

Spud: 04/25/2016 Comp: 04/29/2016

RTD: 3220' LTD: 3216'

Mud Up: 2709' Type Mud: Chemical was displaced

Samples Saved From: 2700' to RTD

Geological Supervision From: 2850' to RTD

Geologist on Well: Josh Austin

Surface Casing: 8 5/8" @265'

Production Casing: 5 1/2" @3175'

Lebsack Oil Production Inc. well comparison sheet

DRILLING WELL
Bensch 4

COMPARISON WELL
Bensch 2

COMPARISON WELL
North River 4

Structural

Structural

	1729 KB				1730 KB		Relationship		1725 KB	Relationship		
Formation	Sample	Sub-Sea	Log	Sub-Sea	Log	Sub-Sea	Sample	Log	Log	Sub-Sea	Sample	Log
Heebner	2837	-1108	2832	-1103	2839	-1109	1	6	2830	-1105	-3	2
Douglas	2865	-1136	2861	-1132	2867	-1137	1	5	2856	-1131	-5	-1
Brown Lime	2974	-1245	2969	-1240	2976	-1246	1	6	2966	-1241	-4	1
Lansing	2990	-1261	2987	-1258	2992	-1262	1	4	2982	-1257	-4	-1
"F" Zone	3075	-1346	3070	-1341	3077	-1347	1	6	3065	-1340	-6	-1
Total Depth	3220	-1491	3216	-1487	3363	-1633			3200	-1475		

NOTES

On the basis of the fair structural position, shows in the samples and after reviewing the electric logs, it was recommended by all parties involved in the Bensch #4 to run 5 1/2" production casing to further test the Lansing. (no drill stem test was taken)

ROCK TYPES

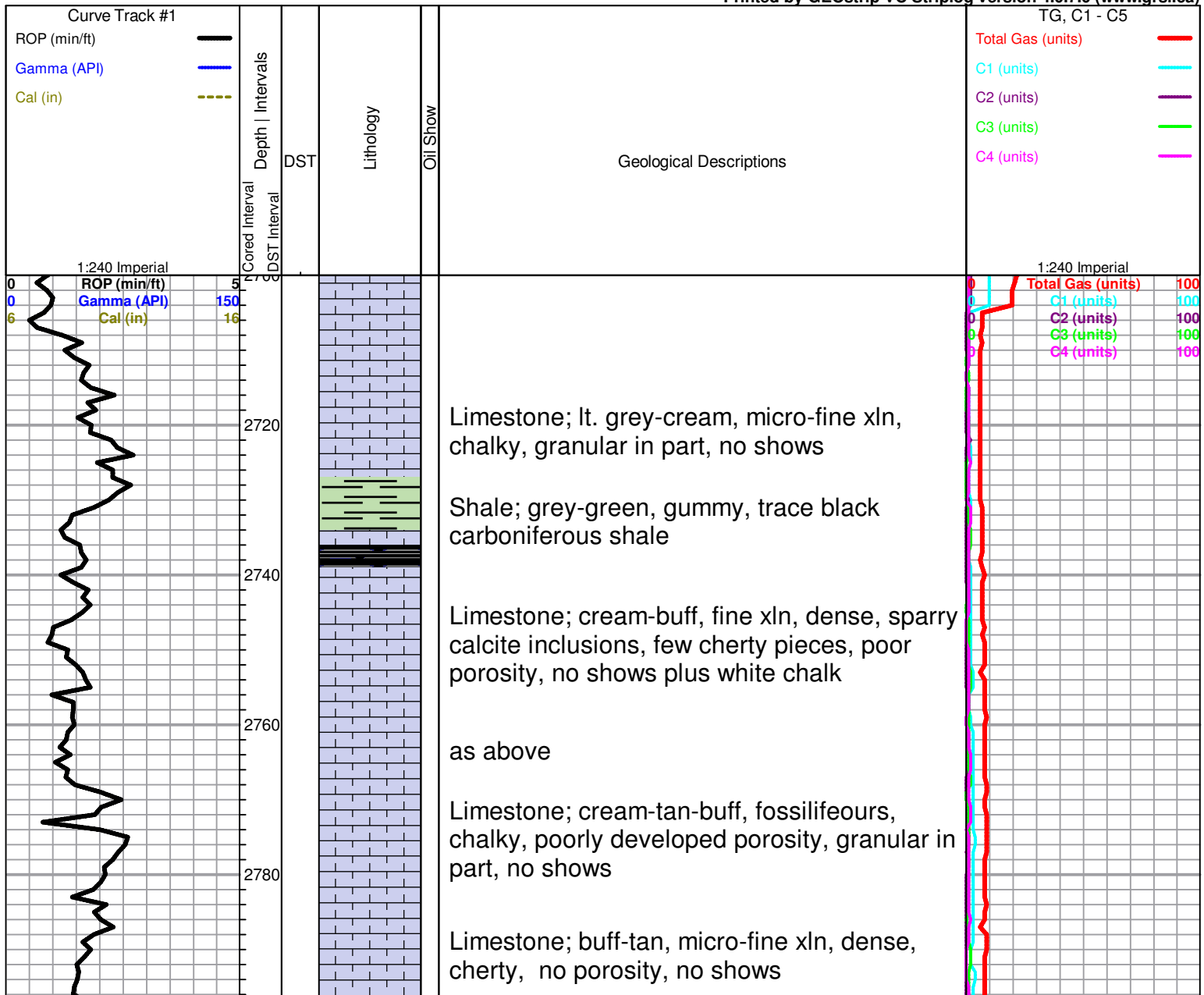
	Lmst fw7>		shale, gry		Ss
	shale, grn		Carbon Sh		Slst

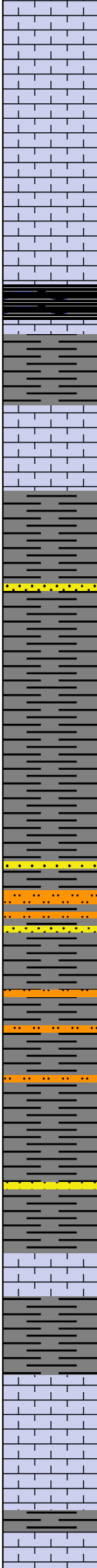
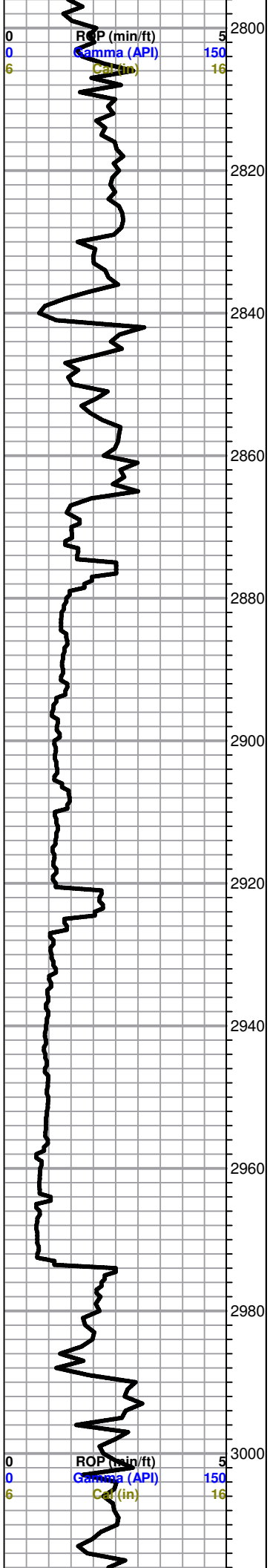
OTHER SYMBOLS

DST

	DST Int
	DST alt
	Core
	tail pipe

Printed by GEOstrip VC Striplog version 4.0.7.0 (www.grsi.ca)





Limestone; cream-lt. grey, fine xln, chalky, few scattered fossilcast type porosity, grey-opaque Chert, no shows

HEEBNER 2837 (-1108)
Black Carboniferous Shale

Shale; grey-greyish green, soft

Limestone; white-cream, chalky, no shows

DOUGLAS 2865 (-1136)

Shale; brick red, greyish green soft/gummy,

Shale; greyish green few micaceous pieces, soft, silty in part

Shale; as above

Shale; grey-greysih green, micaceous in part, slightly silty, plus Siltstone; grey-greyish green, micaceous, soft

Shale; as above, grey-greyish green, silty, micaceous in part

as above

BROWN LIME 2974 (-1245)

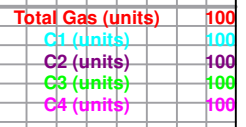
Limestone; tan-brown, fine xln, dense, cherty

Shale; grey-dark grey, micaceous in part

LANSING 2990 (-1261)

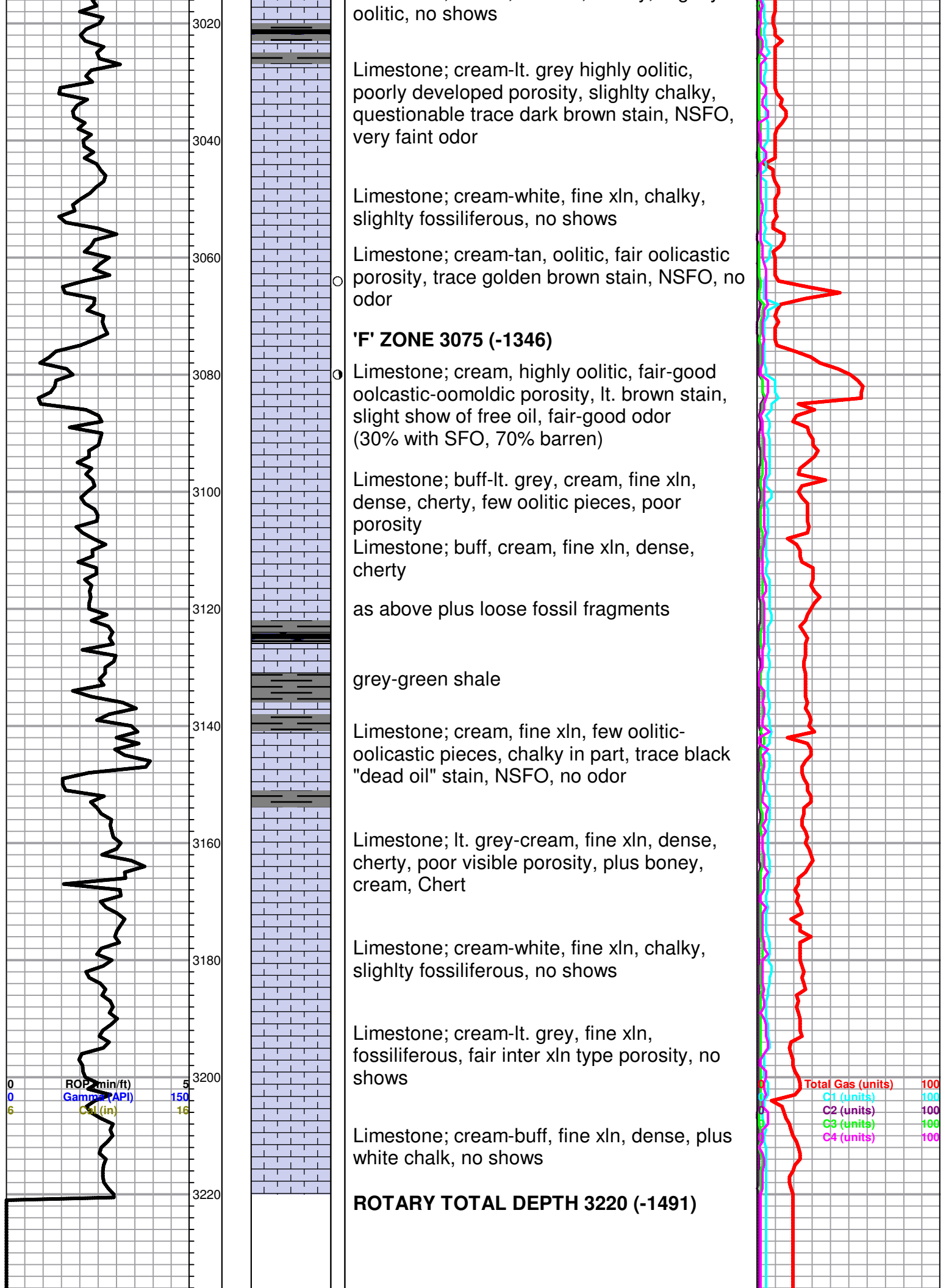
Limestone; grey-cream, fine xln, slightly fossiliferous-oolitic, chalky in part, few scattered porosity, no shows

Limestone; cream, fine xln, chalky, slightly



KB 1729





3240

