



Fall & Associates

Stake and Elevation Service

P.O. Box 222

Pretty Prairie, KS. 67570

785-243-7506

Date 4-7-16

Invoice Number 0404161

CYNOSURE ENERGY, LLC

1-1-14-35

Kough

Operator

Number

Farm Name

Logan-KS

1

14s

35w

1745'FSL 350'FEL

County-State

S

T

R

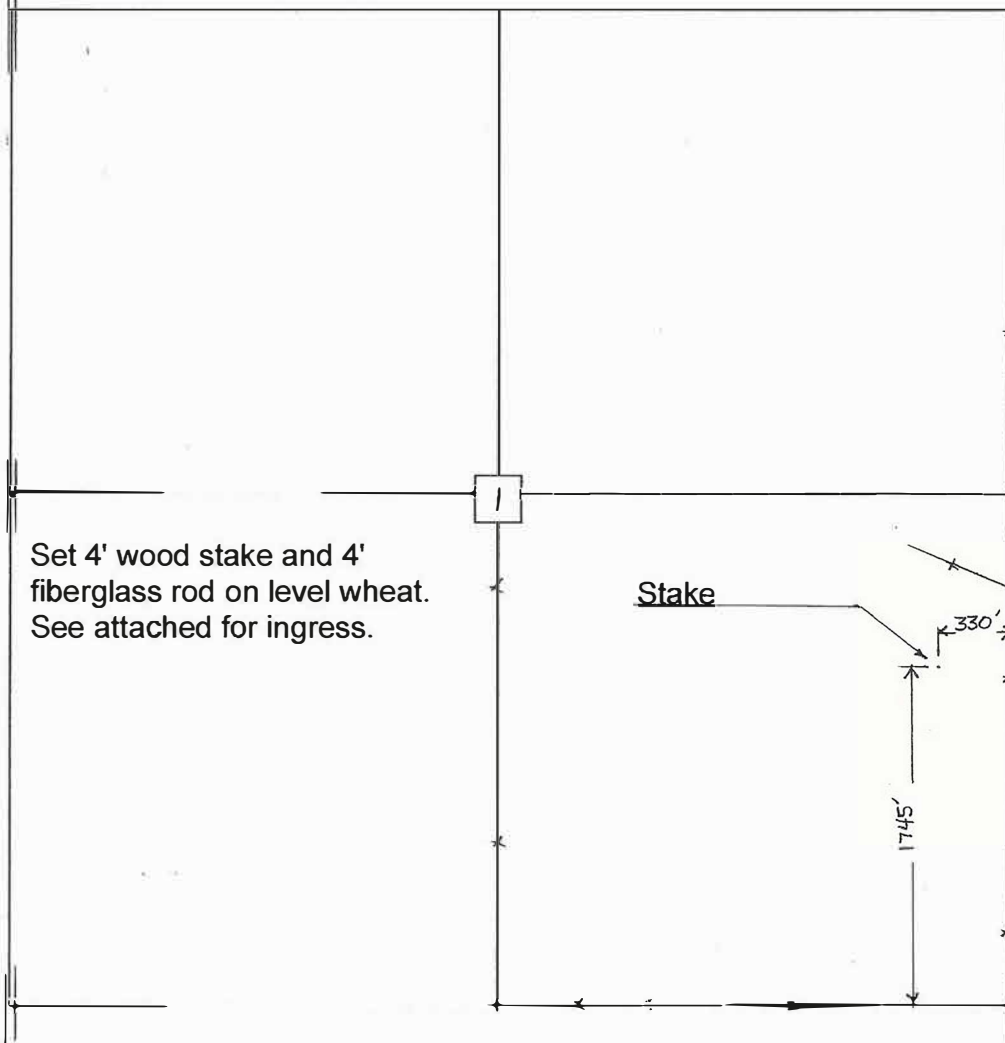
Location

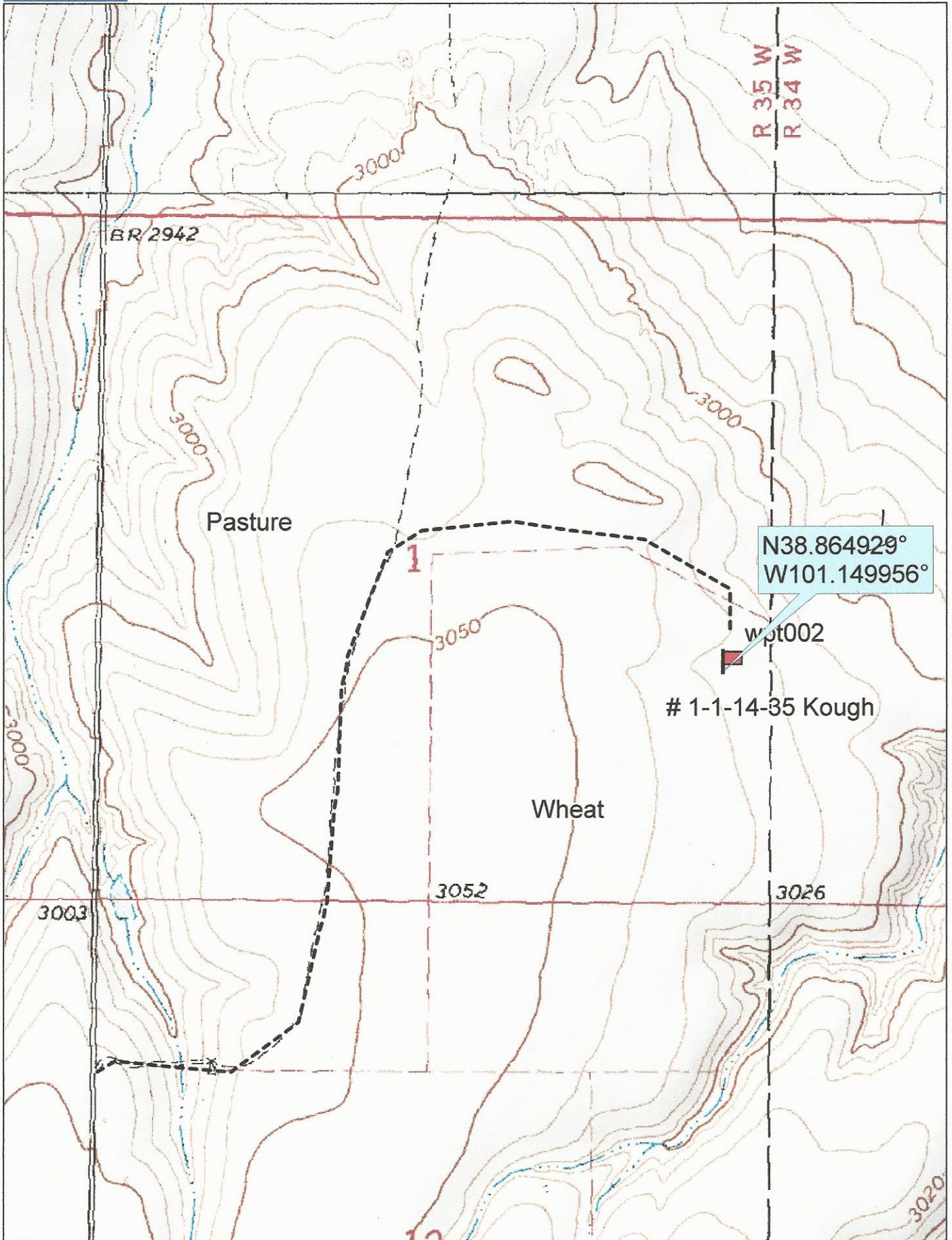
Cynosure Energy, LLC
1125 17th Street
Suite 410
Denver, CO. 80202-2025

Elevation 3027 Gr.

Ordered By: Elizabeth

Scale 1"=1000'





Data use subject to license.

© DeLorme. Topo North America™ 9.

www.delorme.com

