

**OPERATOR**

Company: MILLER-BECKER ENTERPRISES, LLC  
 Address: 100 S. MAIN STREET  
 RUSSELL, KANSAS 67665

Contact Geologist: DRU MILLER/RYAN BECKER  
 Contact Phone Nbr: 785-483-2880  
 Well Name: DUMLER # 1-28  
 Location: E2 NE NW NE SEC 28-T15S-R15W  
 API: 15-167-24,042-00-00  
 Pool: WILDCAT  
 State: KANSAS  
 Field: UNNAMED  
 Country: USA

## Scale 1:240 Imperial

Well Name: DUMLER # 1-28  
 Surface Location: E2 NE NW NE SEC 28-T15S-R15W  
 Bottom Location:  
 API: 15-167-24,042-00-00  
 License Number: 34589  
 Spud Date: 12/4/2015 Time: 5:30 PM  
 Region: RUSSELL COUNTY  
 Drilling Completed: 12/10/2015 Time: 4:01 AM  
 Surface Coordinates: 330' FNL & 1580' FEL  
 Bottom Hole Coordinates:  
 Ground Elevation: 1924.00ft  
 K.B. Elevation: 1934.00ft  
 Logged Interval: 2800.00ft To: 3525.00ft  
 Total Depth: 3525.00ft  
 Formation: LANSING-KANSAS CITY  
 Drilling Fluid Type: CHEMICAL/FRESH WATER GEL

**SURFACE CO-ORDINATES**

Well Type: Vertical  
 Longitude: 38.724747  
 Latitude: -98.991726  
 N/S Co-ord: 330' FNL  
 E/W Co-ord: 1580' FEL

**LOGGED BY**

Company: SOLUTIONS CONSULTING, INC.  
 Address: 108 W 35TH  
 HAYS, KS 67601

Phone Nbr: (785) 639-1337  
 Logged By: GEOLOGIST Name: HERB DEINES

**CONTRACTOR**

Contractor: SOUTHWIND DRILLING, INC.  
 Rig #: 1  
 Rig Type: MUD ROTARY  
 Spud Date: 12/4/2015 Time: 5:30 PM  
 TD Date: 12/10/2015 Time: 4:01 AM  
 Rig Release: 12/10/2015 Time: 10:30 PM

**ELEVATIONS**

K.B. Elevation: 1934.00ft Ground Elevation: 1924.00ft  
 K.B. to Ground: 10.00ft

**NOTES**

RECOMMENDATION TO PLUG AND ABANDON WELL BASED ON NEGATIVE RESULTS OF TWO DSTS.

ALTHOUGH THE WELL RAN STRUCTURALLY HIGH TO SURROUNDING WELLS, THERE WAS NO ADEQUATE RESERVOIR DEVELOPMENT IN ANY OF THE PRIMARY OR SECONDARY PAY ZONES.

OPEN HOLE LOGGING BY TUCKER ENERGY SERVICES: DUAL INDUCTION LOG, COMPENSATED NEUTRON/DENSITY LOG, MICROLOG, SONIC LOG, COMPOSITE LOG

DRILL STEM TESTING BY EAGLE TESTERS LLC: TWO (2) CONVENTIONAL TESTS

<b>Dumler #1-28</b>	<b>Dumler B #1</b>	<b>Steinert #4</b>
<b>E2 NE NW NE</b>	<b>NW NW NE</b>	<b>NW SE SE SW</b>
<b>Sec.28-15S-15W</b>	<b>Sec.28-15-15W</b>	<b>Sec.21-15-15W</b>
<b>1924'GL 1934'KB</b>	<b>KB 1926'</b>	<b>KB 1891'</b>

<u>FORMATION</u>	<u>LOG TOPS</u>	<u>LOG TOPS</u>	<u>LOG TOPS</u>
<b>Anhydrite</b>	<b>976 +958</b>	<b>+ 955</b>	<b>+ 944</b>
<b>B-Anhydrite</b>	<b>1008 +926</b>	<b>+ 922</b>	<b>+ 913</b>
<b>Topeka</b>	<b>2886 - 952</b>	<b>- 958</b>	<b>- 959</b>
<b>Heebner Sh.</b>	<b>3113-1179</b>	<b>-1184</b>	<b>-1185</b>
<b>Toronto</b>	<b>3130-1196</b>	<b>-1204</b>	<b>-1204</b>
<b>Douglas Sh.</b>	<b>3146-1212</b>	<b>-1218</b>	<b>-1219</b>
<b>LKC</b>	<b>3171-1237</b>	<b>-1244</b>	<b>-1245</b>
<b>BKC</b>	<b>3398-1464</b>	<b>-1471</b>	<b>-1469</b>
<b>Conglomerate</b>	<b>3408-1474</b>	<b>-1482</b>	<b>-1473</b>
<b>Arbuckle</b>	<b>3424-1490</b>	<b>-1515</b>	<b>-1492</b>
<b>RTD</b>	<b>3525-1591</b>	<b>-1529</b>	<b>-1519</b>

#### SUMMARY OF DAILY ACTIVITY

12-04-15 RU, Spud 5:30 PM,  
 12-05-15 817', set 8 5/8" surface casing to 815' w/350 sxs 70/30 2%Gel 3%CC, slope ½ degree, plug down 9:30AM, drill plug 5:30 PM  
 12-06-15 1288', drilling  
 12-07-15 2365', drilling, displaced 2769' to 2803'  
 12-08-15 3125', drilling, CFS 3145', short trip, CFS 3200', DST #1 3141' to 3200' "A"- "C"  
 12-09-15 3310', drilling, CFS 3365', DST # 2 3298' to 3365' "H" – "J" LKC, TIWB  
 12-10-15 3525', drilling, RTD 3525' @4:01AM, CCH, TOWB, logs, LDDP, P&A, slope ¾ degree



## DRILL STEM TEST REPORT

MILLER BECKER ENTERPRISES L.L.C.

**28-15S-15W RUSSELL**

100 SOUTH MAIN STREET  
RUSSELL, KANSAS 67665

**DUMBLER 1-28**

ATTN: HERB DIENES

Job Ticket: 01205

**DST#: 1**

Test Start: 2015.12.08 @ 04:11:00

### GENERAL INFORMATION:

Formation: **KANSAS CITY A-C**

Deviated: No Whipstock: ft (KB)

Time Tool Opened: 05:33:00

Time Test Ended: 00:00:00

Test Type: Conventional Bottom Hole (Initial)

Tester: GENE BUDIG

Unit No: 1

Interval: **3141.00 ft (KB) To 3200.00 ft (KB) (TVD)**

Reference Elevations: 1934.00 ft (KB)

Total Depth: 3200.00 ft (KB) (TVD)

1924.00 ft (CF)

Hole Diameter: 7.88 inches Hole Condition: Fair

KB to GR/CF: 10.00 ft

### Serial #: 9139

### Outside

Press@RunDepth: 142.03 psia @ 3195.65 ft (KB)

Capacity: 5000.00 psia

Start Date: 2015.12.08

End Date: 2015.12.08

Last Calib.: 2015.12.08

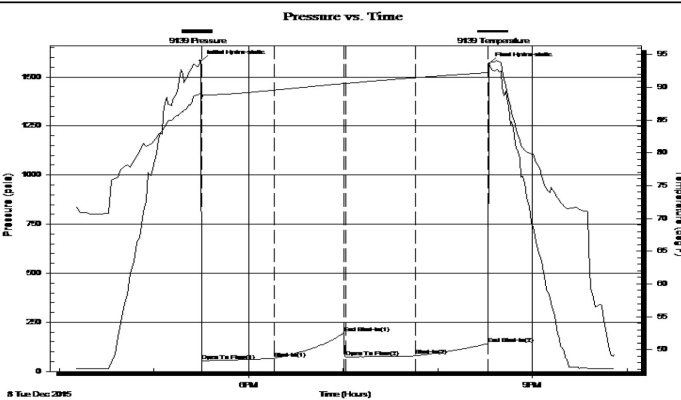
Start Time: 16:10:00

End Time: 21:52:30

Time On Btm: 2015.12.08 @ 17:29:30

Time Off Btm: 2015.12.08 @ 20:32:30

TEST COMMENT: 1ST OPENING 45 MINUTES WEAK BUILDING BLOW BUILT TO 7 INCHES INTO THE WATER  
1ST SHUT-IN 45 MINUTES NO BLOW BACK  
2ND OPENING 45 MINUTES WEAK BUILDING BLOW BUILT TO 7 1/2 INCHES INTO THE WATER  
2ND SHUT-IN 45 MINUTES NO BLOW BACK



### PRESSURE SUMMARY

Time (Min.)	Pressure (psia)	Temp (deg F)	Annotation
0	1581.80	89.22	Initial Hydro-static
1	53.11	88.22	Open To Flow (1)
47	66.69	89.56	Shut-In(1)
91	196.51	90.59	End Shut-In(1)
92	73.25	90.58	Open To Flow (2)
137	79.83	91.46	Shut-In(2)
183	142.03	92.24	End Shut-In(2)
183	1567.34	93.42	Final Hydro-static

### Recovery

Length (ft)	Description	Volume (bbl)
0.00	120 FEET OF GAS IN THE PIPE	0.00
60.00	OIL CUT MUD 20 OIL 80 MUD	0.84

### Gas Rates

	Choke (inches)	Pressure (psia)	Gas Rate (Mcf/d)

Eagle Testers

Ref. No: 01205

Printed: 2015.12.08 @ 22:13:56



## DRILL STEM TEST REPORT

MILLER BECKER ENTERPRISES L.L.C.

**28-15S-15W RUSSELL**

100 SOUTH MAIN STREET  
RUSSELL, KANSAS 67665

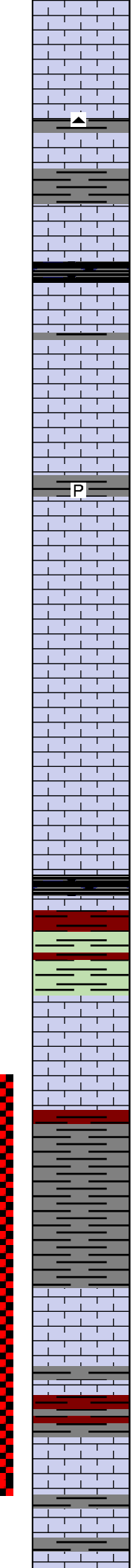
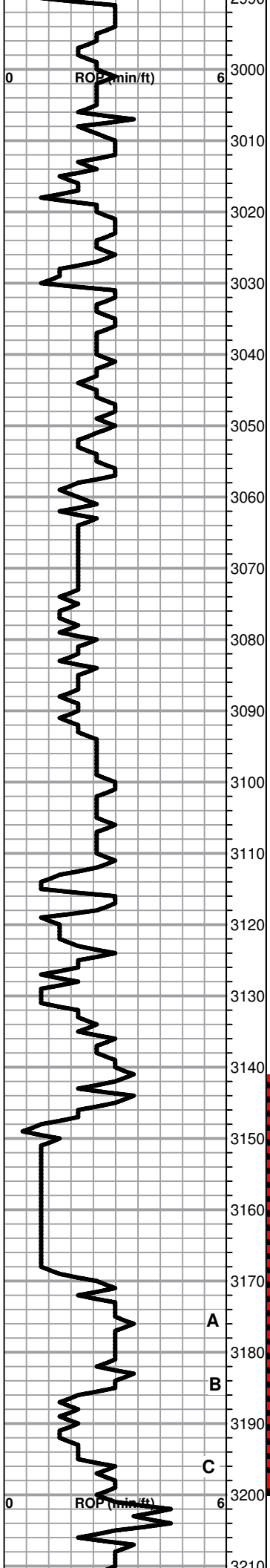
**DUMBLER 1-28**

Job Ticket: 01205

**DST#: 1**



Depth   Interval	DST	Lithology	Oil Show	Geological Descriptions	1:240 Imperial
Cored Interval DST Interval					1:240 Imperial
0 ROP (min/ft)	6	2800		BEGIN 1' DRILL TIME FROM 2800' TO RTD BEGIN 10' WET AND DRY SAMPLES FROM 2850' TO RTD	8 5/8" SURFACE CASING SET TO 815' W/ 350 SXS 70/30 2% GEL, 3% CC
0 ROP (min/ft)	6	2800		<b>ANHYDRITE TOP 976+958</b> <b>ANHYDRITE BASE 1008+926</b>	<b>SLOPE @817' 1/2 DEGREE</b>
				Lime, lt brn-lt gray, fnxln, slightly fossiliferous	
				Lime, lt brn-lt gray, fnlxn	
				Shale, lt gray, soft sticky clumps	
				Lime, lt brn-lt gray, fnxln	
				Lime, lt brn, fn-vfxln	
				Lime, lt brn-lt gray, fn-vfxln, hard on crush	
				Shale, lt-med gray, soft-firm blocky, slightly fossiliferous in part	
				<b><u>TOPEKA ELog 2886-952</u></b>	
				Lime, lt brn-lt grayish brn, fnxln, slight bedded chalk in part, NS	
				Lime, lt brn-lt grayish brn, fnxln with slight chalky matrix in part, NS	
				Lime, lt brn-lt grayish brn, fnxln with soft chalky layers in part	
				Lime, lt brn, fnxln	
				Lime, lt-med brn, fnxln with scattered fusulinids and fine micro fossils	
				Lime, lt brn, fnxln, increasing chalky matrix with bedded chalk	
				Lime, lt brn-med grayish brn, fnxln-granular, slightly fossiliferous	
				Lime, lt-med brn, fnxln, slight bedded chalk, slightly fossiliferous	
				Shale, black carbonaceous, blocky Lime, lt brn, fn-vfxln	
				Lime, crm-lt brn, fn-micro xln	
				Lime, crm-lt brn-lt grayish brn, fn-vfxln	



Lime, crm-lt brn-lt grayish brn, fn-micro xln

Lime, lt-med brn-lt grayish brn, fn-vfxln with thin beds of cemented fossils

Lime, lt brn, fn-vfxln, slightly fossiliferous

Shale, black carbonaceous, fissile, blocky

Lime, lt brn-lt gray, fnxln

Lime, lt brn-lt grayish brn, fnxln, slightly fossiliferous with scattered fusulinids

Lime, lt brn, fnxln, slightly fossiliferous

Lime, lt brn, fnxln, slightly fossiliferous

Lime, crm-lt brn, mostly fnxln with few oomoldic chips with trace of spotty staining

Lime, lt-med brn, mostly fn-vfxln

Lime, lt brn, fnxln-slightly granular with soft chalk in part

Lime, crm-lt brn, fnxln

Lime, lt brn, fn-micro xln

**HEEBNER SHALE ELog 3113-1179**

Shale, black carbonaceous, fissile, blocky  
Lime, Lt gray, fn-vfxln

Lime, reddish brn-lime green, soft sticky

**TORONTO ELog 3130-1196**

Lime, white-crm, fn-vfxln, slight bedded chalk, NS

Lime, white-tan, fn-micro xln, thin hard chalk beds, NS

**DOUGLAS SHALE ELog 3146-1212**

Shale, lt red wash grading into lt-med gray shale, soft blocky

**LKC ELog 3171-1237**

Lime, crm, mostly fnxln, few chips with oolitic/fossil fragments with trace of lt stain in fossil casts, NFO, very lt odor

Lime, crm-tan-med brn, fn-vfxln

Shale, lt gray-lt reddish brn, soft sticky

Lime, crm-lt brn, fnxln with few chips with fossil casts with lt spotty staining, NFO, very lt odor

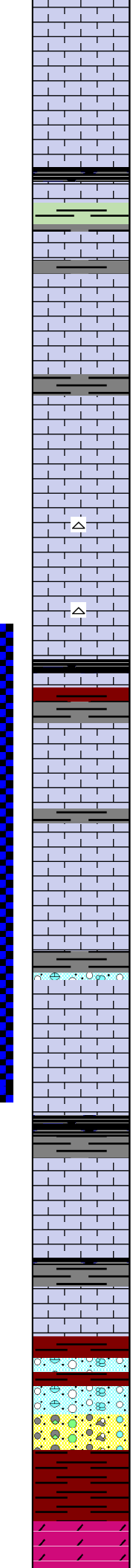
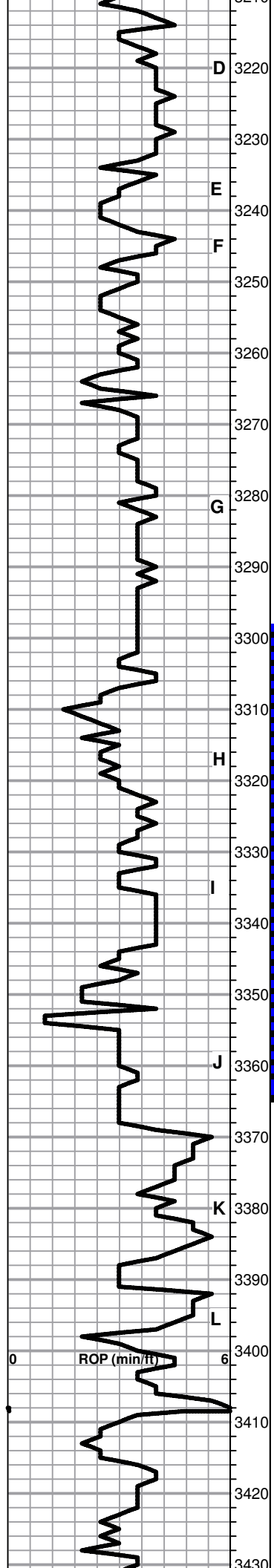
Lime, crm-lt brn, fnxln

**DST # 1 3141' TO 3200' SEE HEADER FOR TEST SUMMARY**

A

B

C



Lime, crm-lt brn, fnxln, slight chalk, NS

Lime, white-crm, fn-micro xln

Shale, gray-black carbonaceous

Lime, lt brn, fnxln, few oolitic/fossil fragments chips with trace of lt stain, NFO, No visible porosity

Lime, white-crm, fnxln, bedded chalk with few speck of hard dead oil

Lime, crm-tan, fnxln with lt bedded chalk

Lime, crm-lt brn, fnxln, lt bedded chalk

Lime, crm-tan, fnxln with bedded chalk

Lime, crm-lt-med brn, fn-vfxln

Lime, lt-med brn, fnxln  
Shale, black carbonaceous, blocky

Shale, reddish brn-med gray, soft-firm blocky

Lime, crm-brn, fnxln, slight bedded chalk, no visible porosity

Lime, tan-lt brn, fn-micro xln, no visible porosity

Lime, tan-lt brn, fn-micro xln,

Shale, med gray, blocky  
Lime, white-crm, fnxln-micro xln in part, few brittle chips, few chips with clastic mix of lime rubble and shale, NS,

Lime, lt brn, mostly fn-micro xln

Shale, lt-med gray-black, firm blocky

Lime, white-crm, fnxln, slight bedded chalk, NS

Lime, white-crm, fn-vfxln, chalky with white wash

Lime, crm, fnxln, bedded chalk

**BKC ELog 3398-1464**

Shale, reddish brn, soft-firm blocky, clastic lime and chert

**CONGLOMERATE ELog 3408-1474**

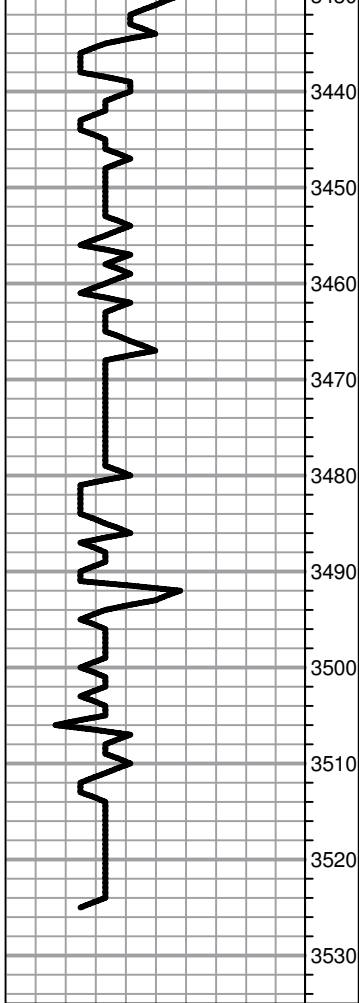
Shale, red wash with vari colored cherts, sharp, fresh

Shale, red with lt red wash

**ARBUCKLE ELog 3424-1490**

Dolomite, lt brn-tan, fnxln-granular with clumps of chalk, no odor, NS

DST # 2 3298' TO 3365' SEE  
HEADER FOR TEST  
SUMMARY



0001, NS  
 Dolomite, crm-tan, fnxln-granular, sticky whtie chalk  
 Dolomite, ivory-crm, granular, sucrosic with finxln in part  
 Dolomite, tan-ivory-lt brn, fnxln-granular  
 Dolomite, ivory-lt brn, fnxln-granular  
 Dolomite, ivory-lt brn, granular with increasing grain size and rhombic xln growth  
 Dolomite, ivory-lt brn, granular-fnxln  
 Dolomite, ivory, granular-fnxln  
 Dolomite, ivory-crm, medium-coarse xln, granular  
 Dolomite, ivory, fnxln-granular  
**RTD 3525-1591    LTD 3526-1592**

1st plug @3400' w/50 sxs  
 2nd plug @1000' w/60 sxs  
 3rd plug @440' w/100 sxs  
 4th plug @40' w/ 10 sxs  
 Rathole w/ 30 sxs  
 Mousehole w/ 15 sxs  
 Ordered 265 sxs 60/40 pos  
 4%gel, 1/4# flocele per sx.  
 Plug down 10:30PM  
 12/10/2015