



**BOREHOLE
COMPENSATED
SONIC
LOG**

Company Prairie Fire Petroleum, LLC.
Well Dane G. Hansen Foundation #1-15
Field Wildcat
County Norton
State KS

Company Prairie Fire Petroleum, LLC.
Well Dane G. Hansen Foundation #1-15
Field Wildcat
County Norton State KS

Location: API #: 15 137 20737
545' FNL & 2090' FWL
SEC 15 TWP 2S RGE 21W
Permanent Datum Ground Level Elevation 2192'
Log Measured From KB 5' AGL
Drilling Measured From KB
Other Services
BCS
CDNL
DIL
Elevation
K.B. 2197'
D.F. 2196'
G.L. 2192'

Date	4-13-16
Run Number	Two
Depth Driller	3875'
Depth Logger	3875'
Bottom Logged Interval	3870'
Top Log Interval	400'
Casing Driller	8 5/8" @ 220'
Casing Logger	220'
Bit Size	7 7/8"
Type Fluid in Hole	Chemical
Density / Viscosity	9.3/53
PH / Fluid Loss	10.6/6.4
Source of Sample	Pit
Rm @ Meas. Temp	.9@60degf
Rmf @ Meas. Temp	.68@60degf
Rmc @ Meas. Temp	1.08@60degf
Source of Rmf / Rmc	Calculated
Rm @ BHT	.58@92degf
Time Circulation Stopped	3:45 a.m.
Time Logger on Bottom	7:45 a.m.
Maximum Recorded Temperature	92degf
Equipment Number	T127
Location	Hays, KS
Recorded By	Gus Pfanenstiel
Witnessed By	Mr. Kevin Bailey

<<< Fold Here >>>

All interpretations are opinions based on inferences from electrical or other measurements and we cannot and do not guarantee the accuracy or correctness of any interpretation, and we shall not, except in the case of gross or willful negligence on our part, be liable or responsible for any loss, costs, damages, or expenses incurred or sustained by anyone resulting from any interpretation made by any of our officers, agents or employees. These interpretations are also subject to our general terms and conditions set out in our current Price Schedule.

Comments

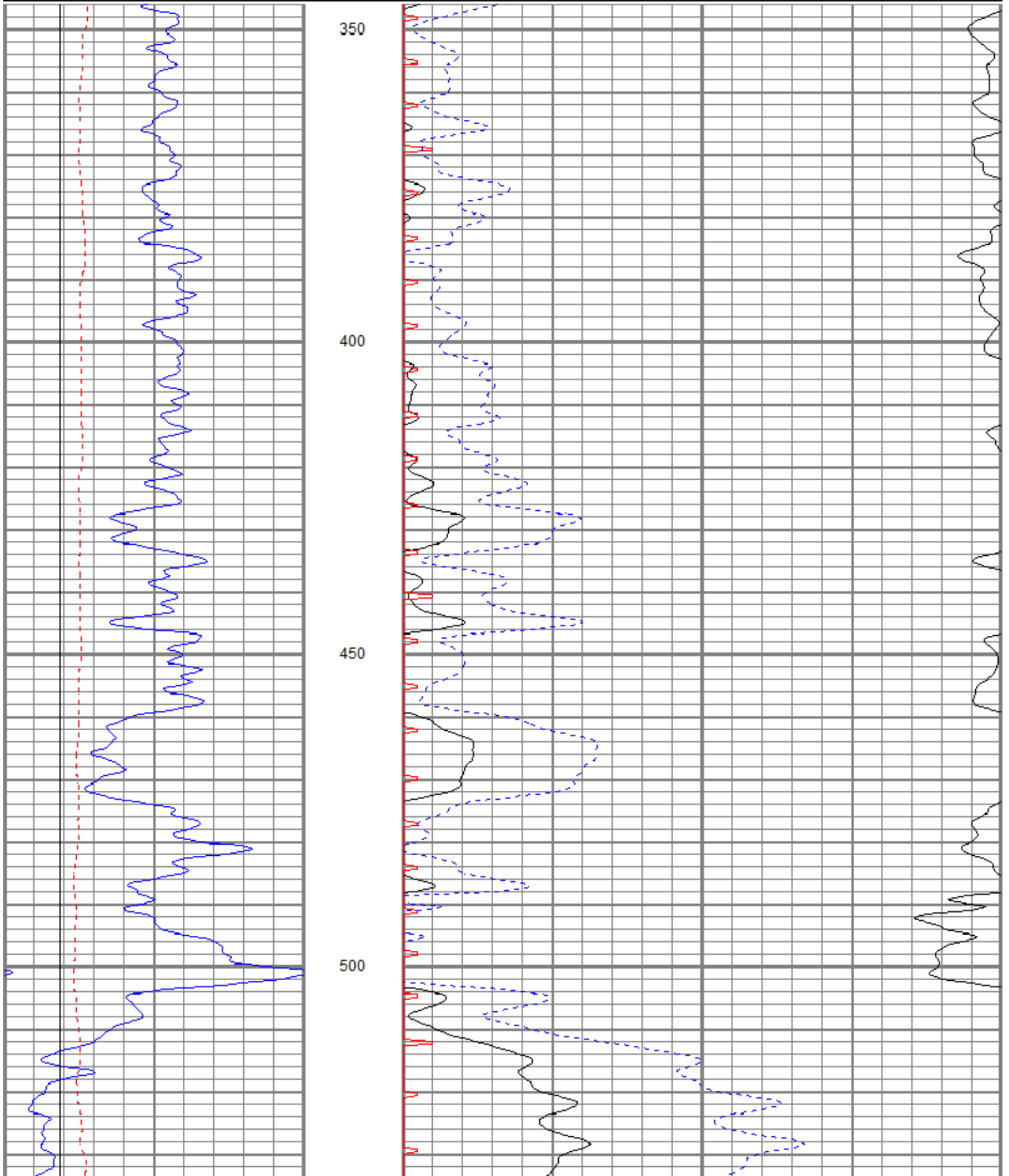
West out of Phillipsburg to 12 Rd.
North to I Rd. West 1/2 mile,
South into.

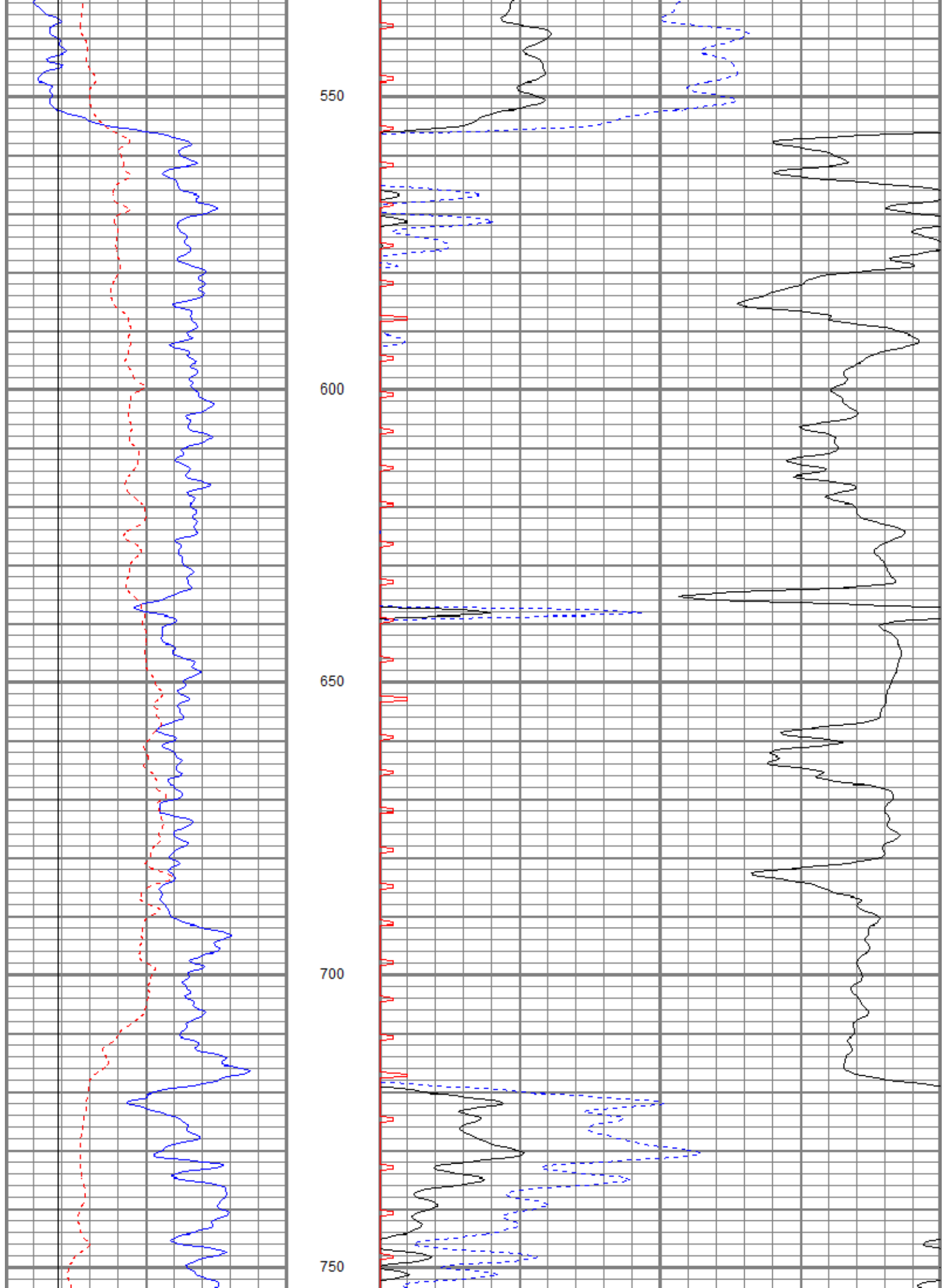


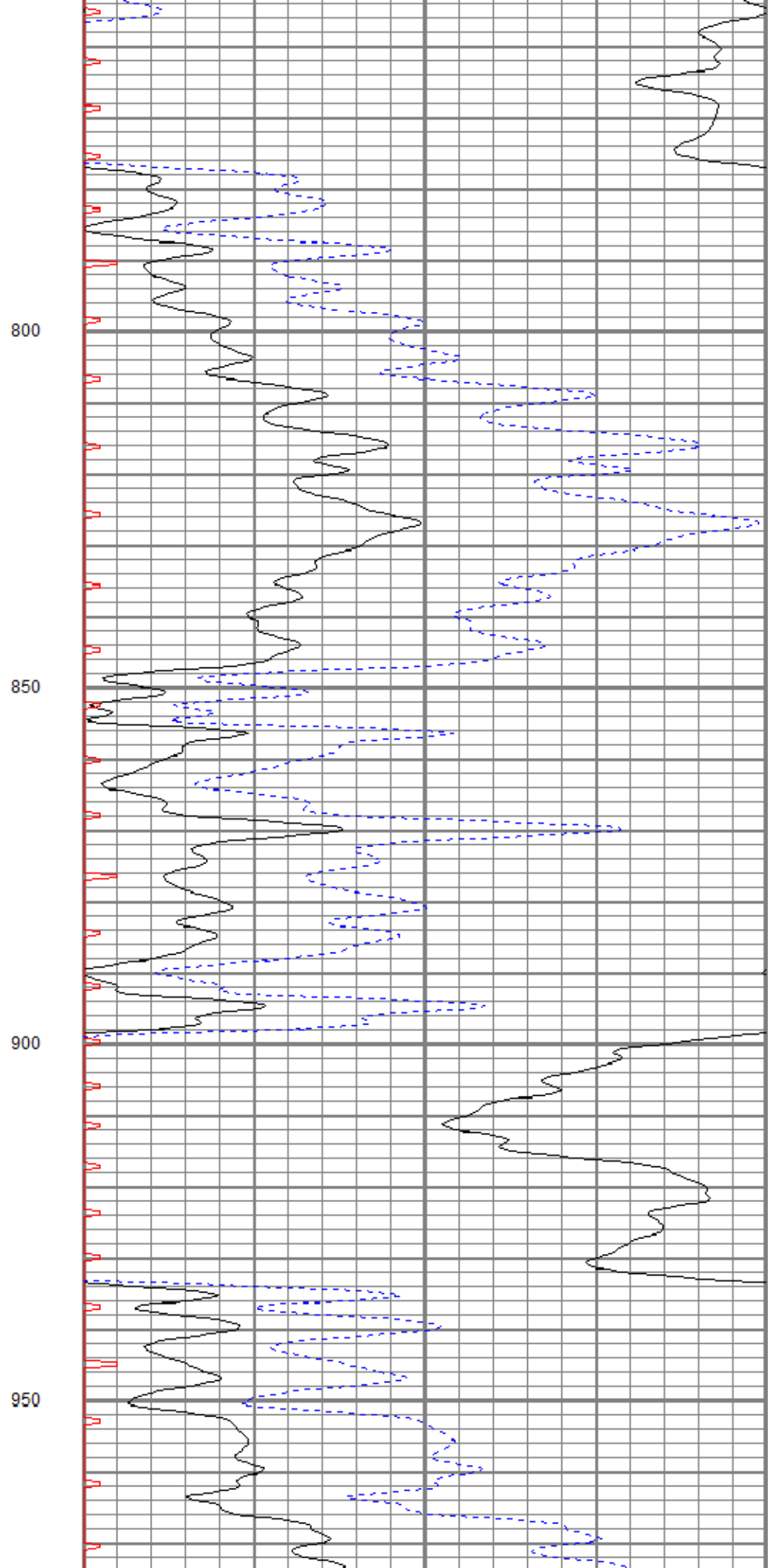
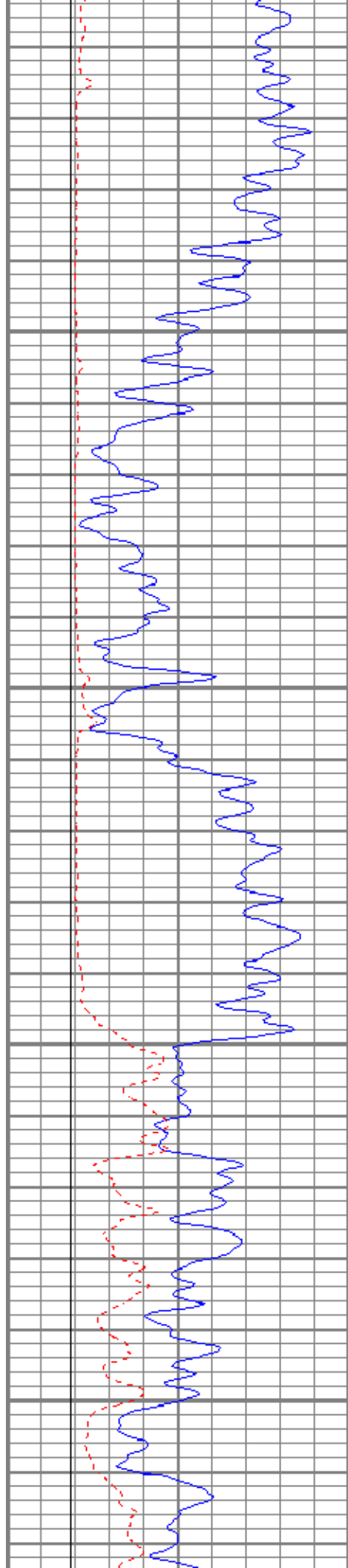
Main Pass

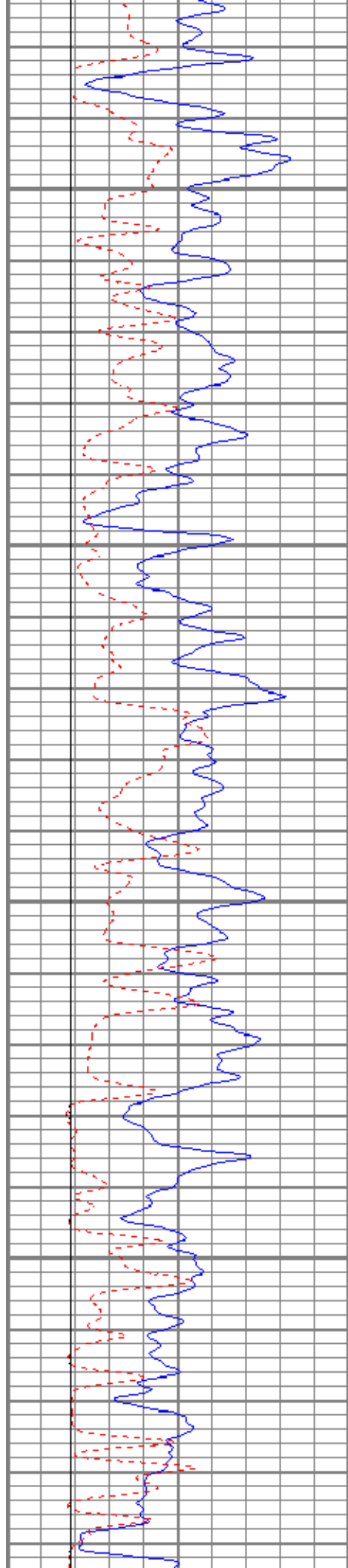
Database File pfdaneghansenfoundation#1-15oh.db
 Dataset Pathname pass4
 Presentation Format kbcs
 Dataset Creation Wed Apr 13 08:45:45 2016
 Charted by Depth in Feet scaled 1:240

0	GR (GAPI)	150	140	DT (usec/ft)	40
6	MCAL (in)	16	30	SPOR (pu)	-10
6	BOREID (in)	16	0	ITT (msec)	20







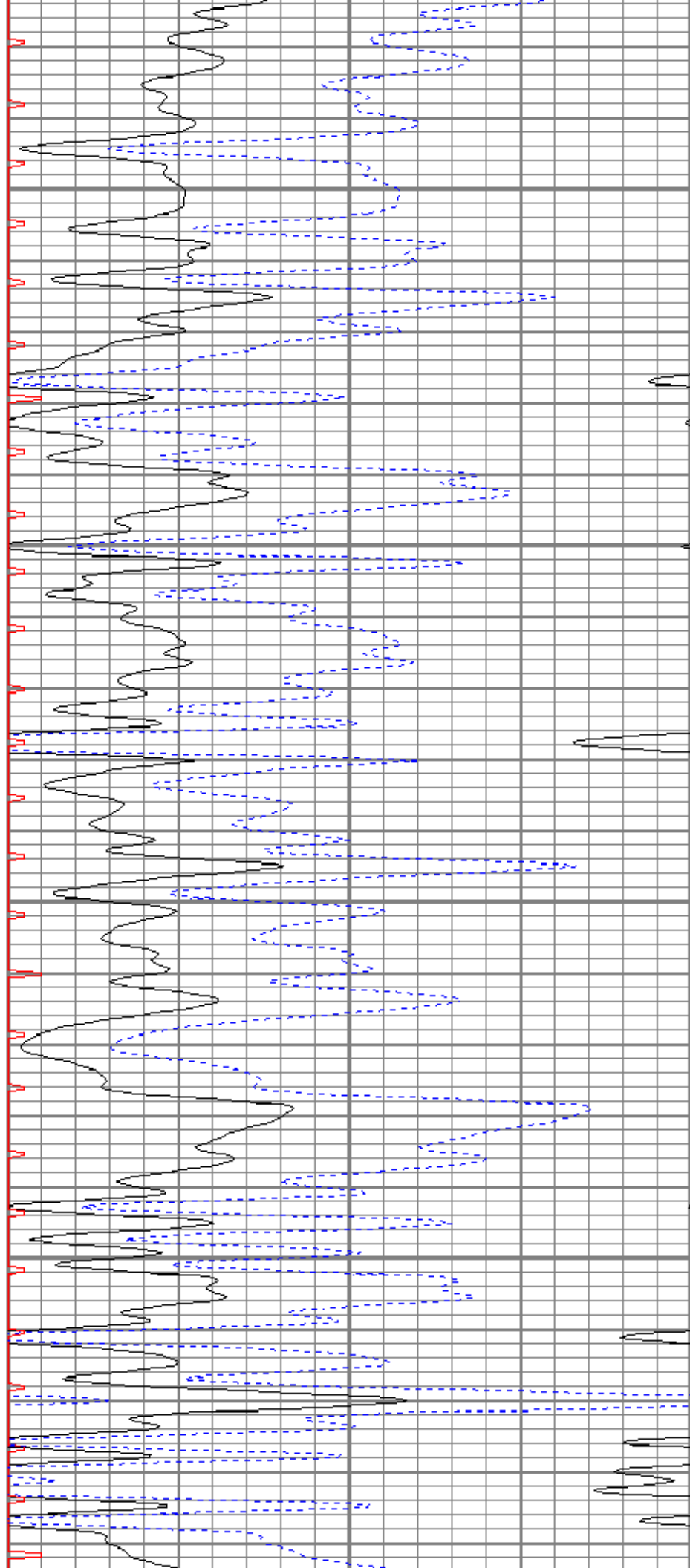


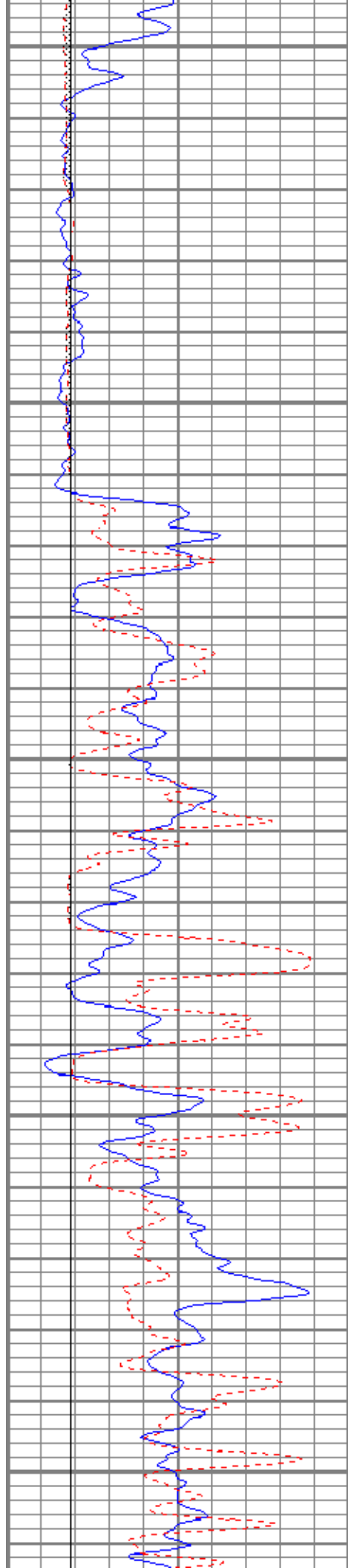
1000

1050

1100

1150





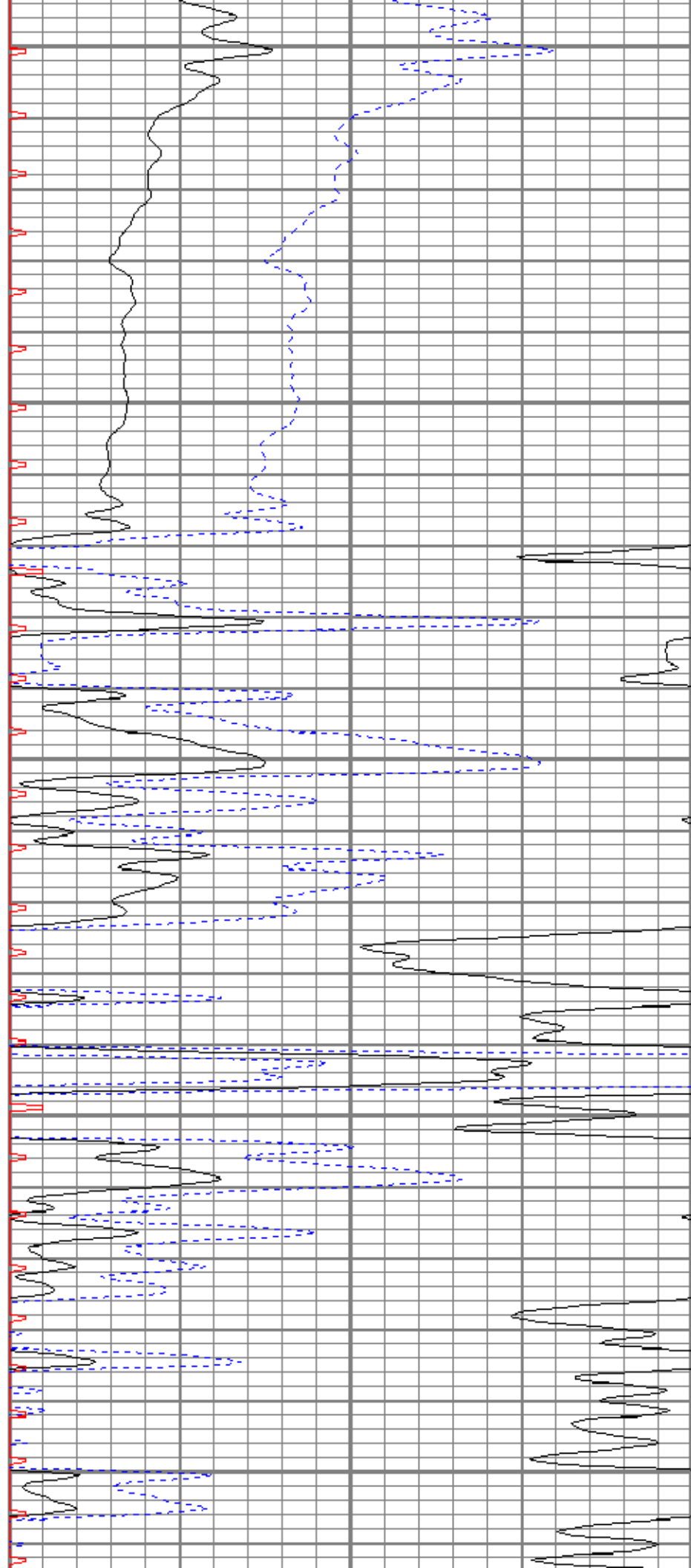
1200

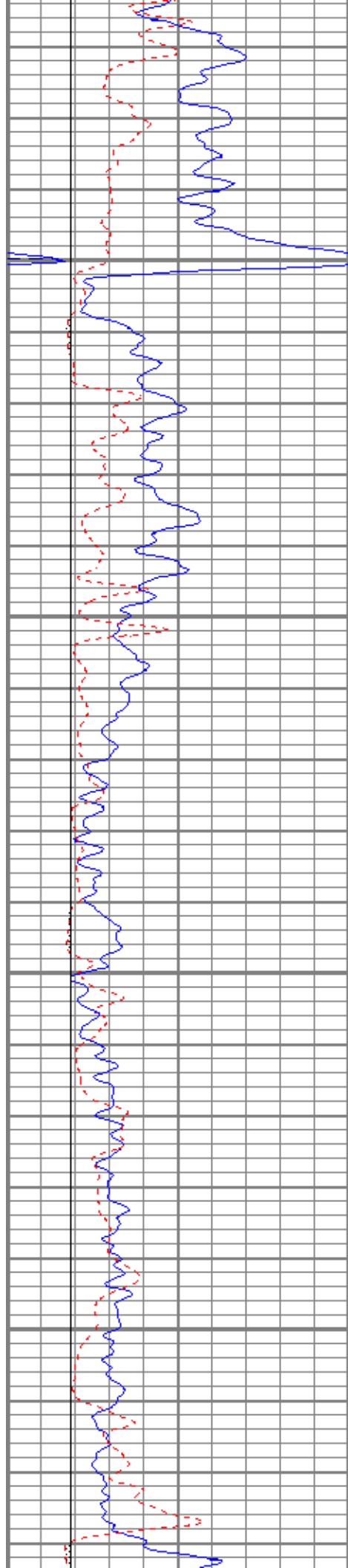
1250

1300

1350

1400



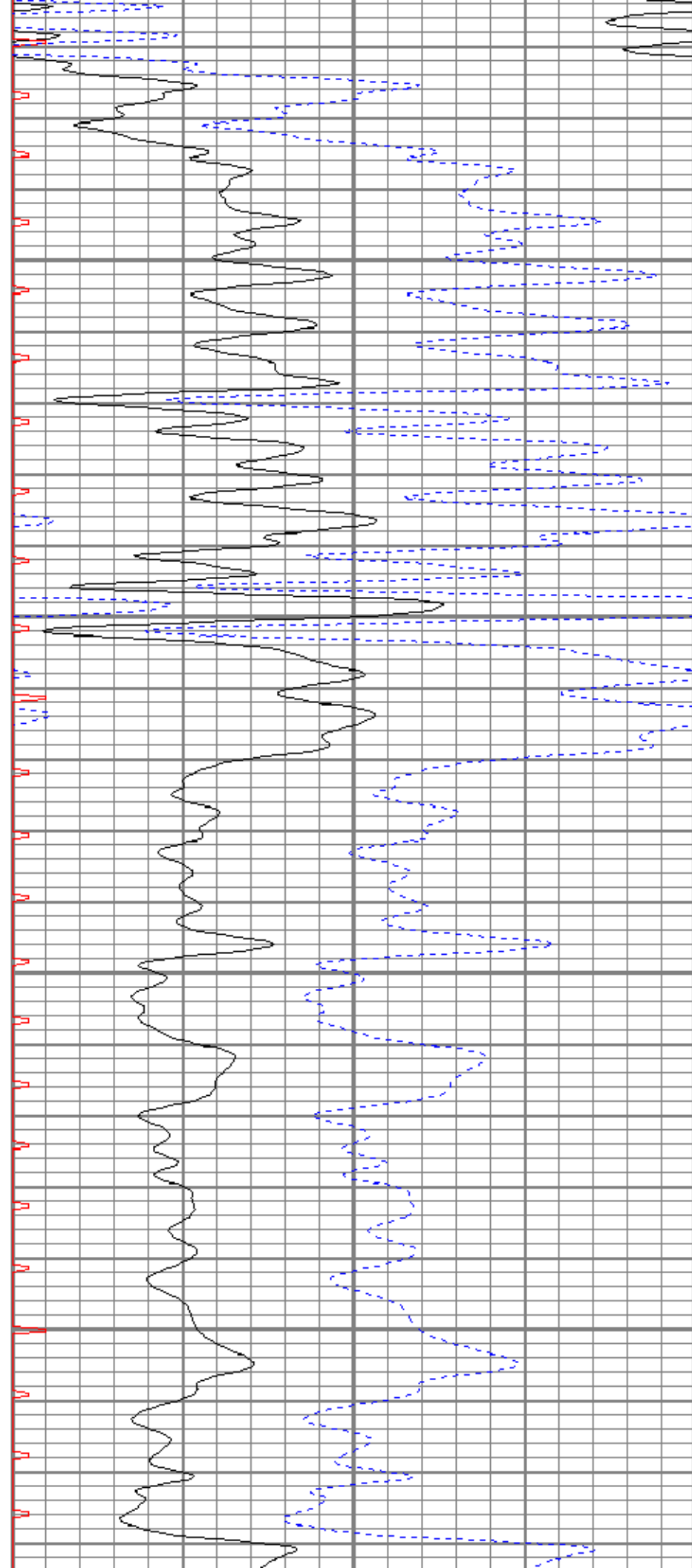


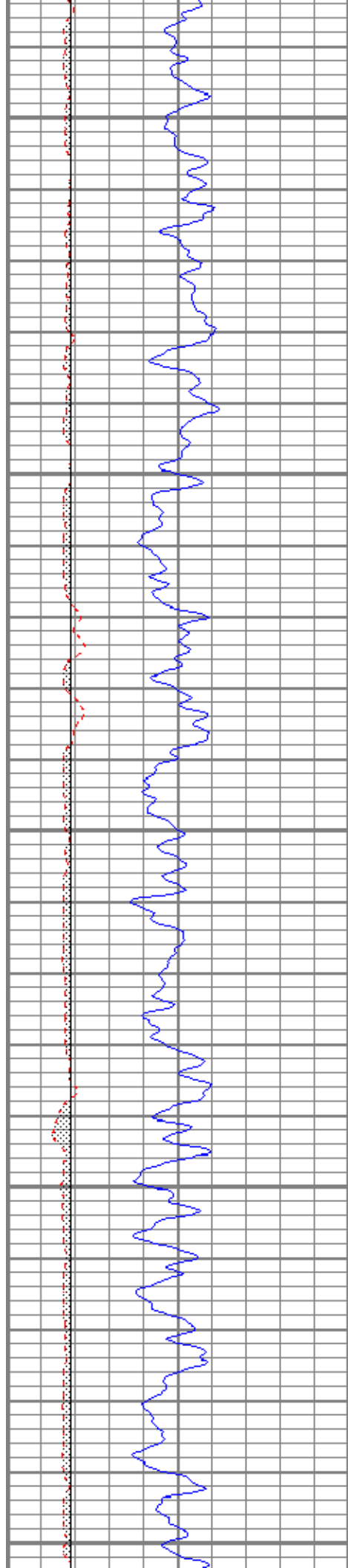
1450

1500

1550

1600





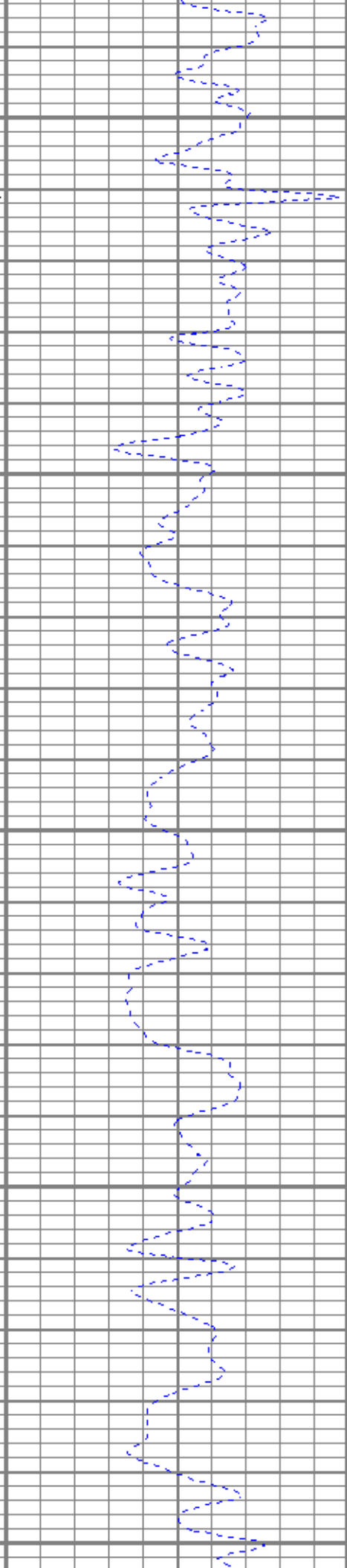
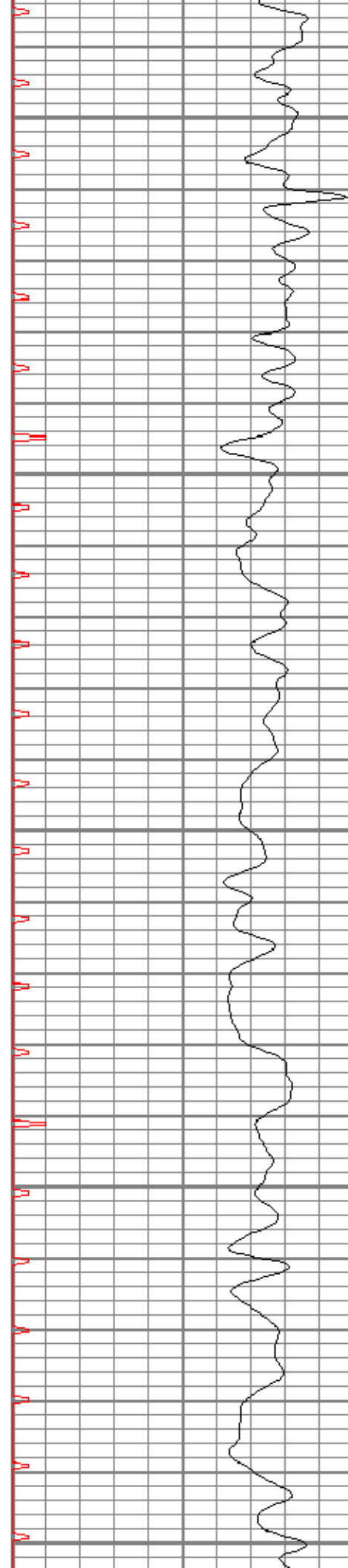
1650

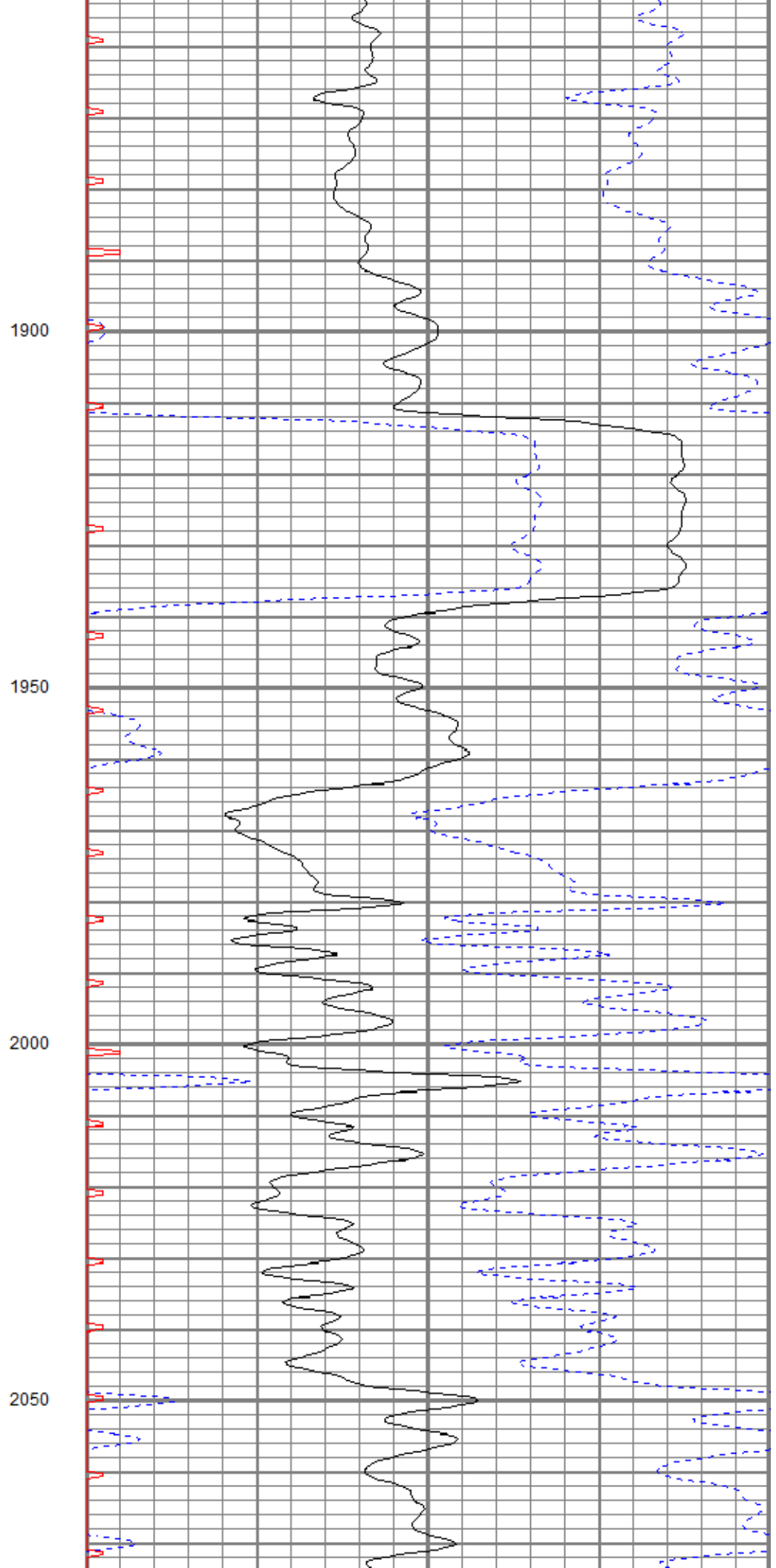
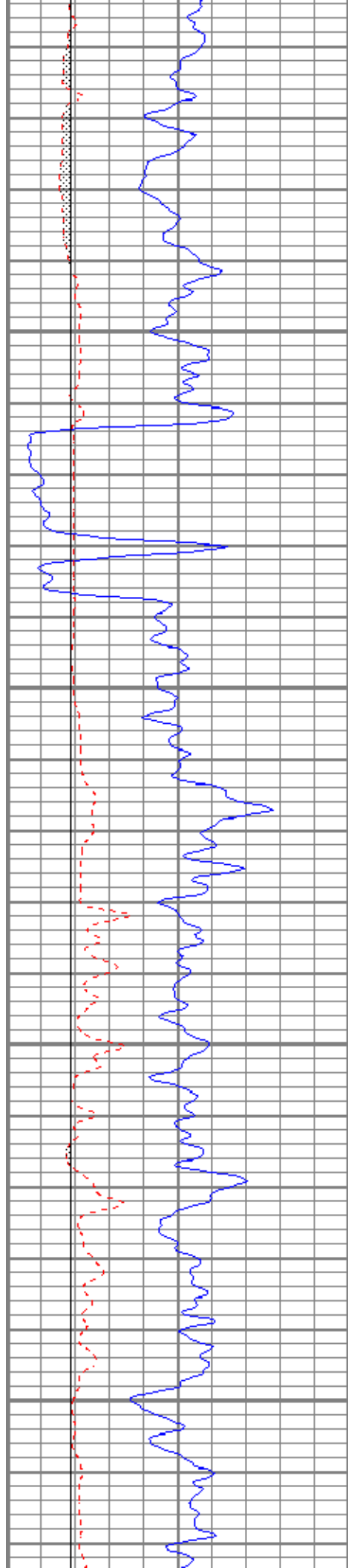
1700

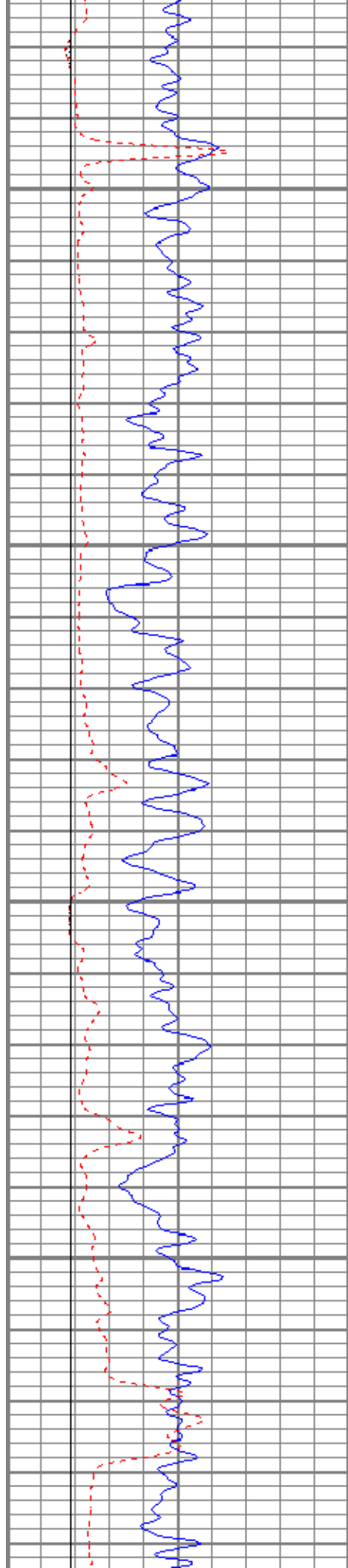
1750

1800

1850





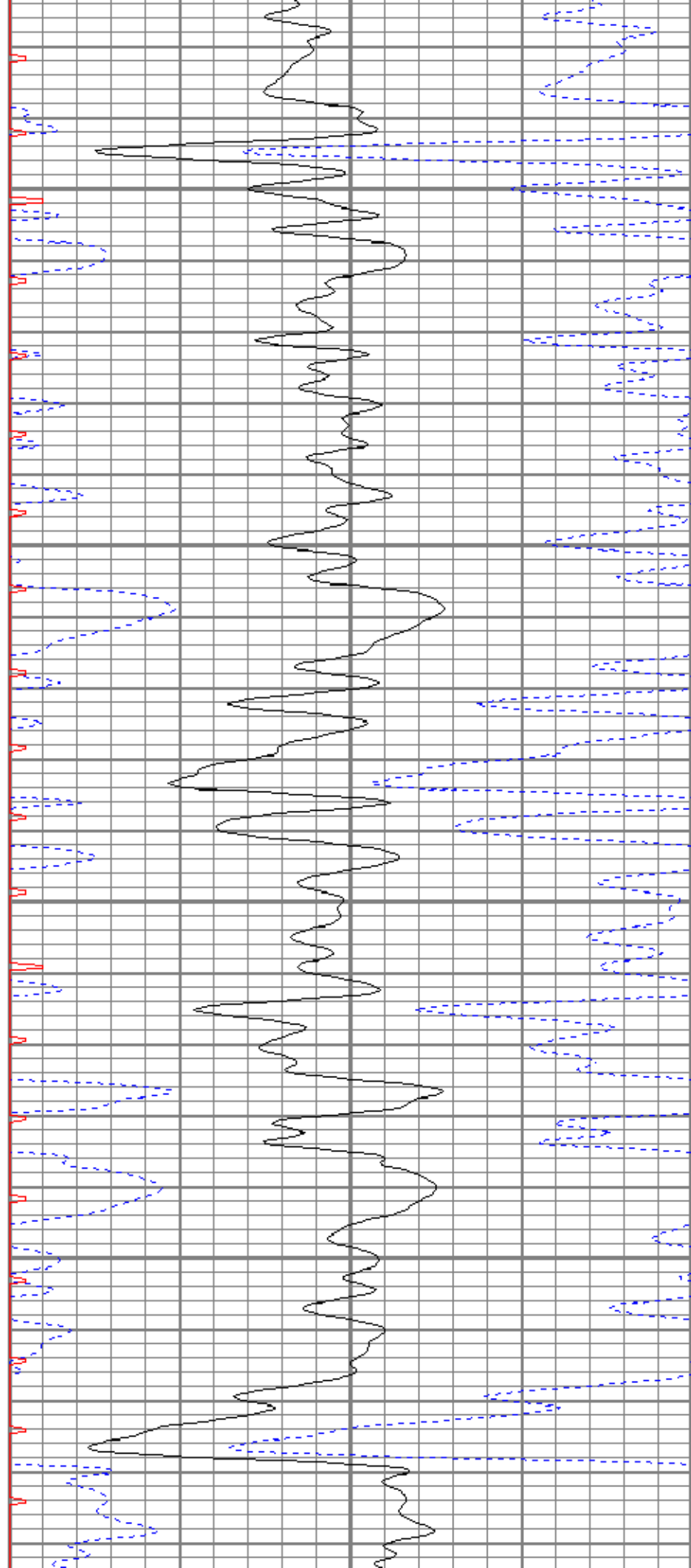


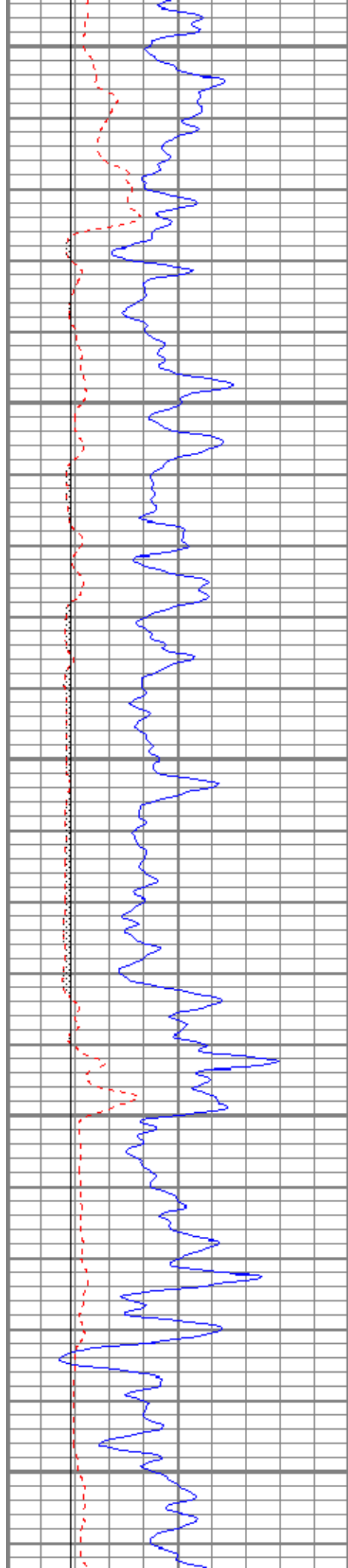
2100

2150

2200

2250





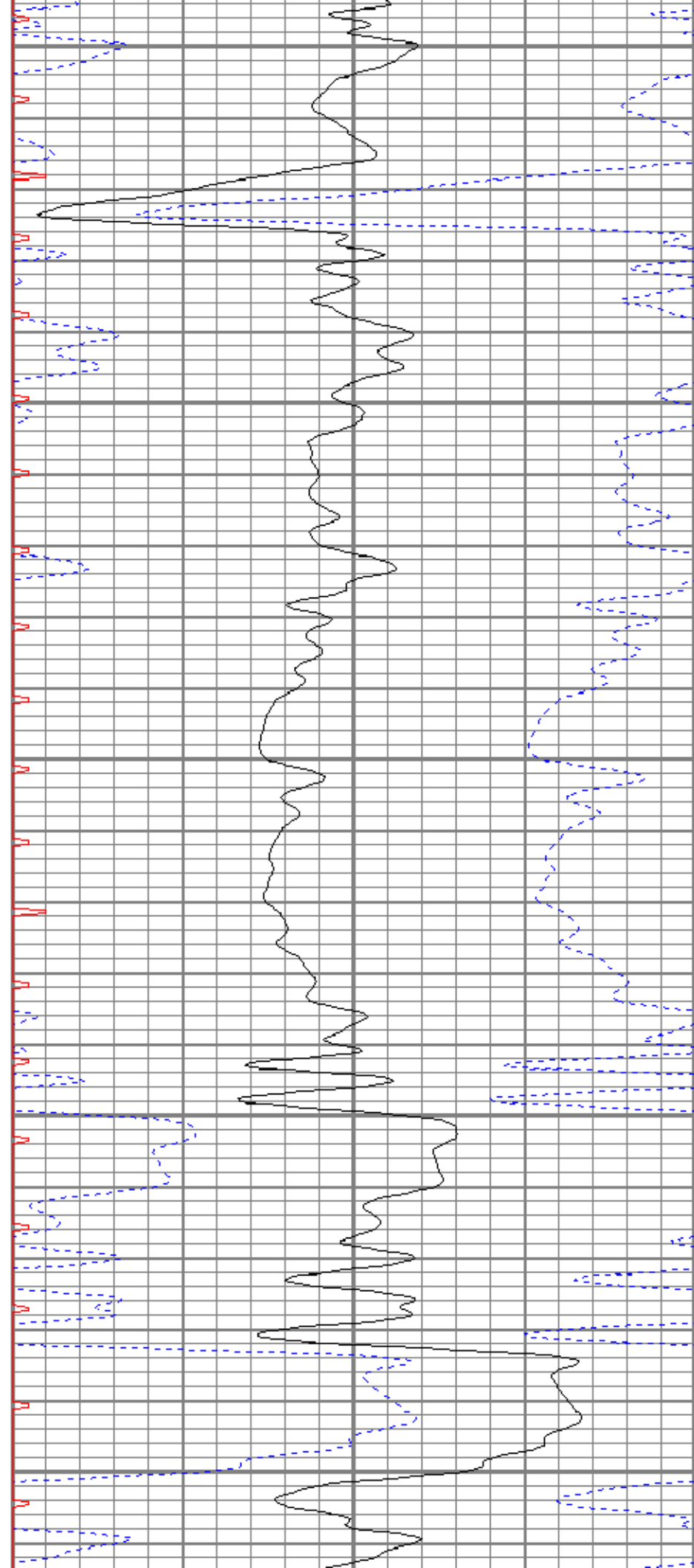
2300

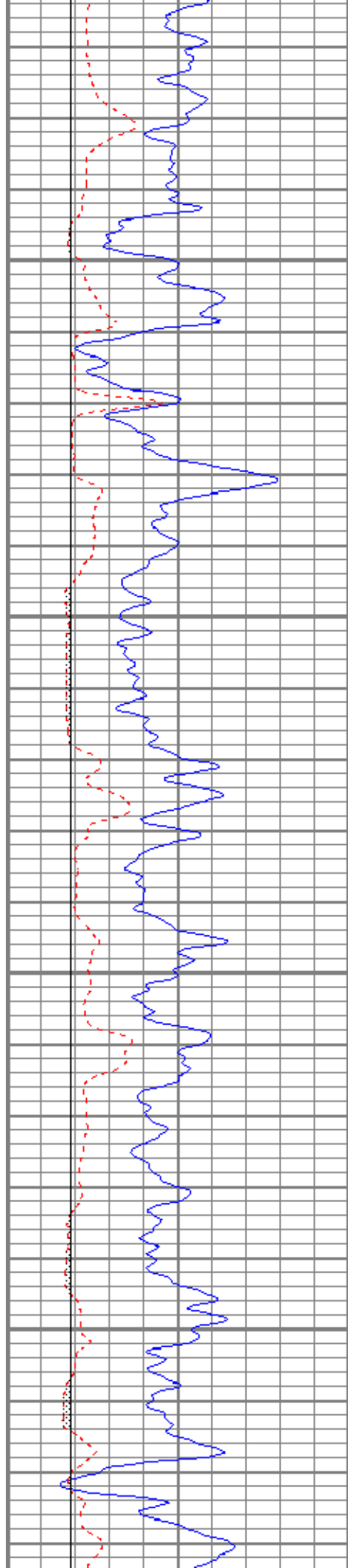
2350

2400

2450

2500



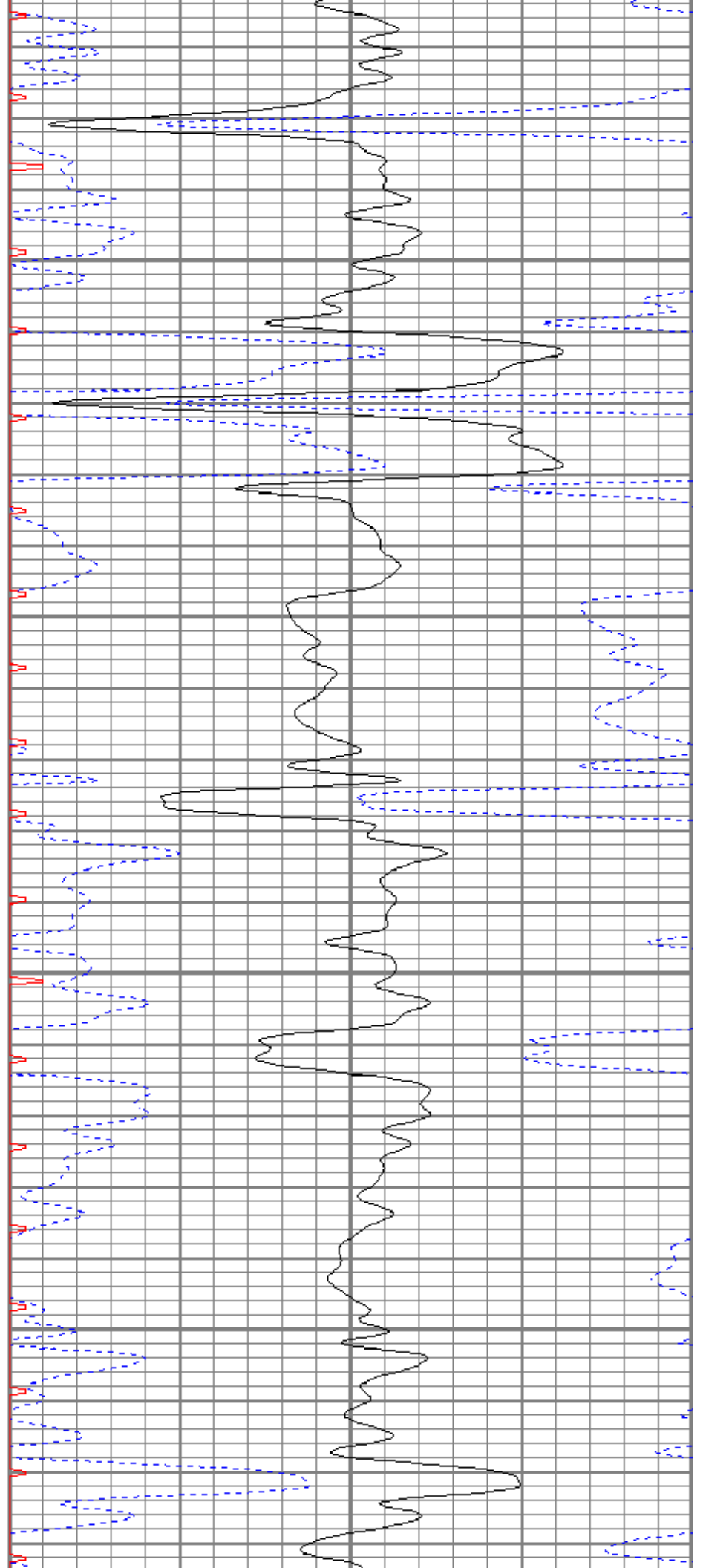


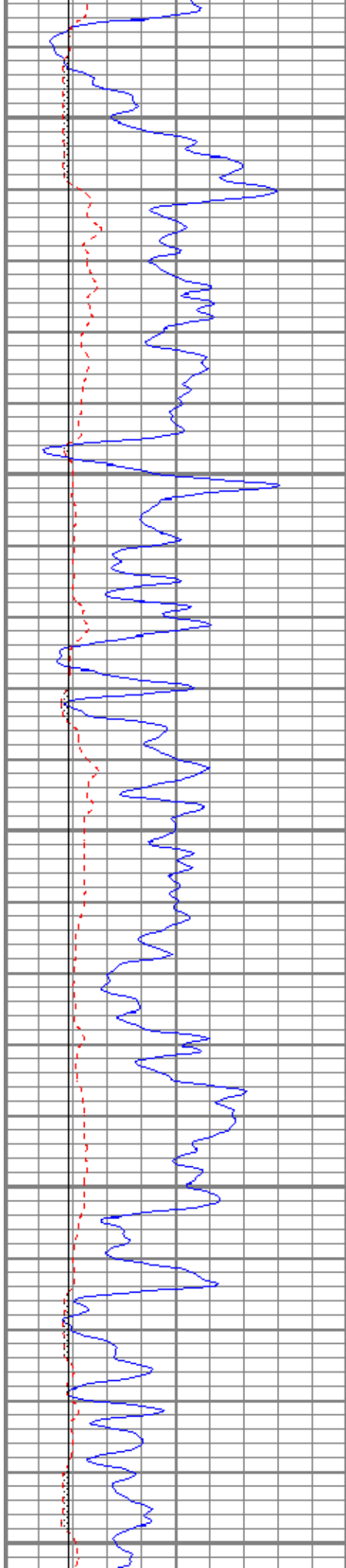
2550

2600

2650

2700





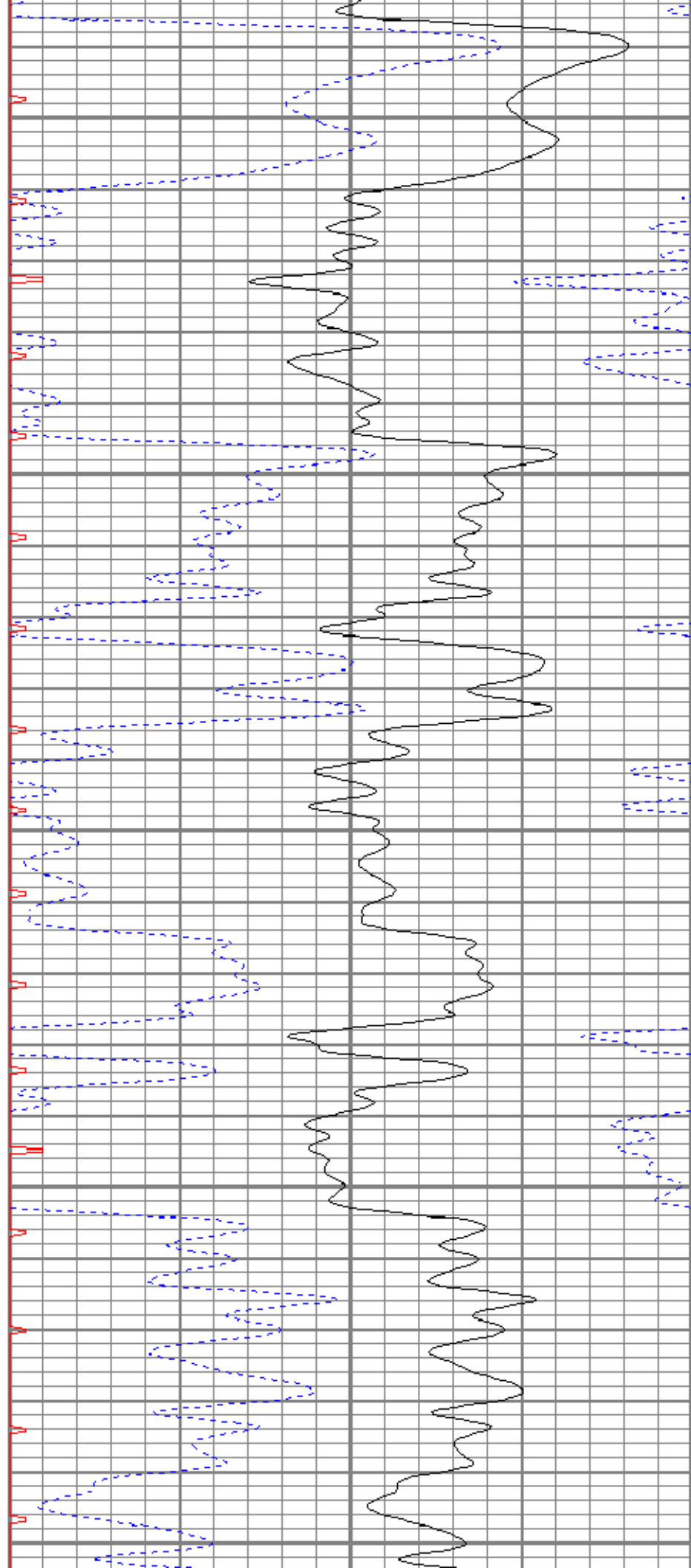
2750

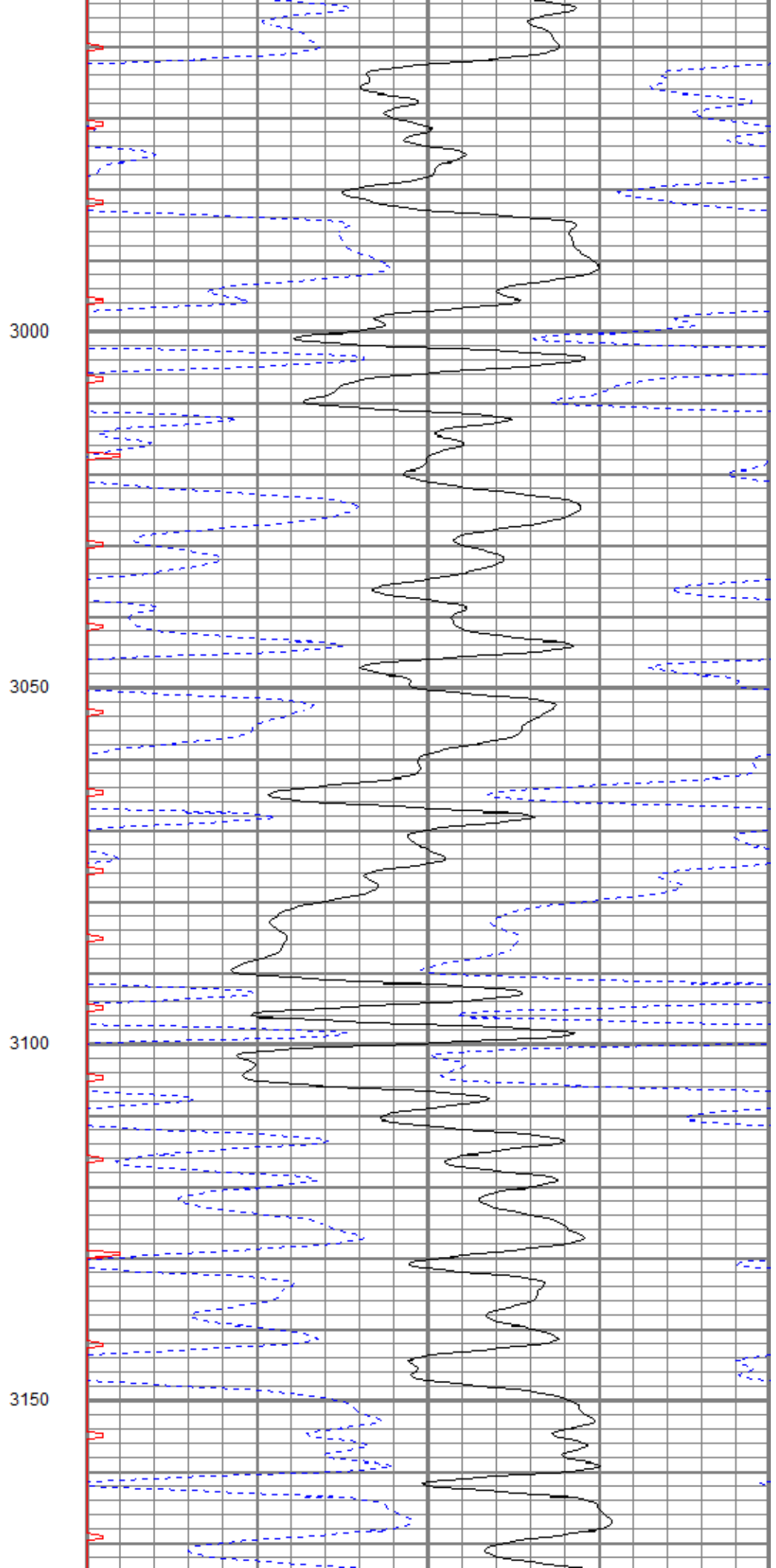
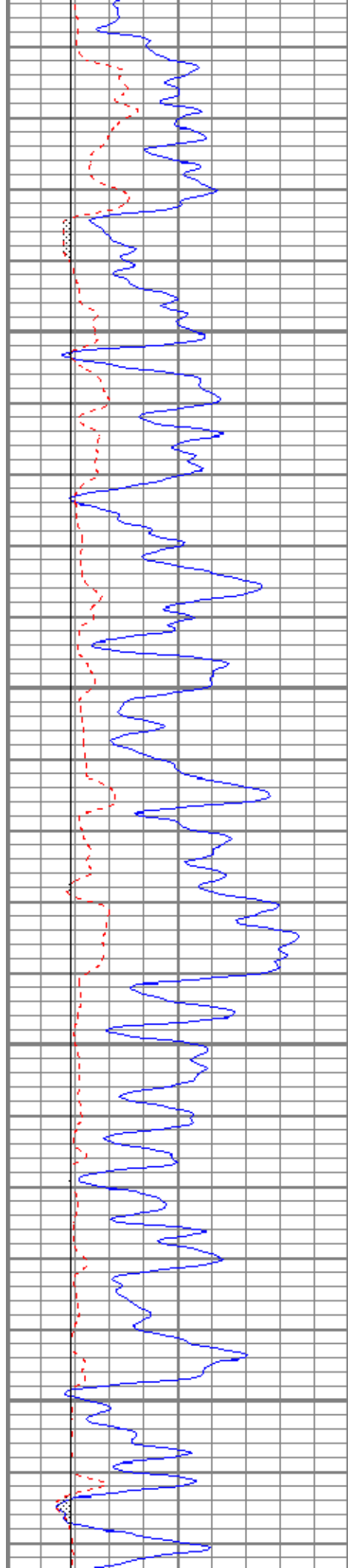
2800

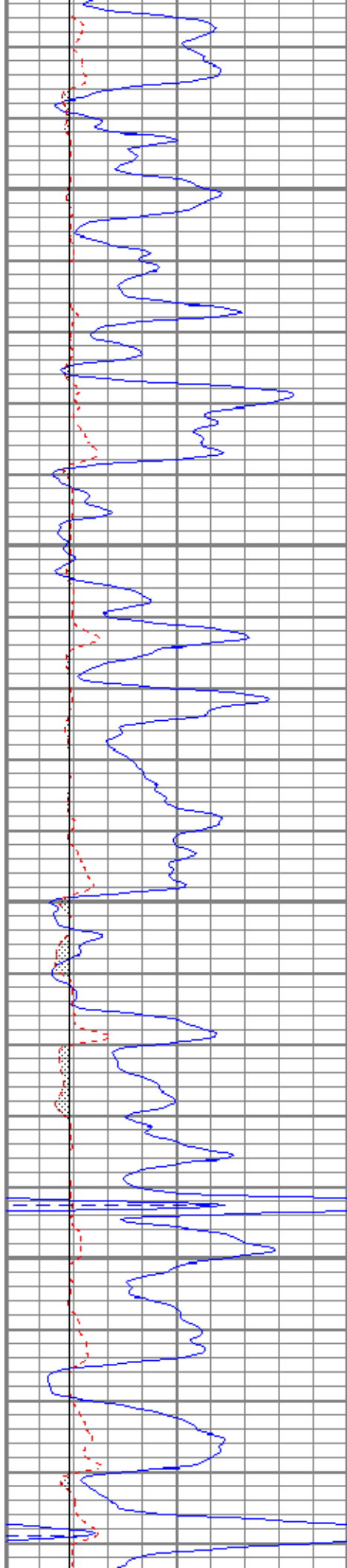
2850

2900

2950





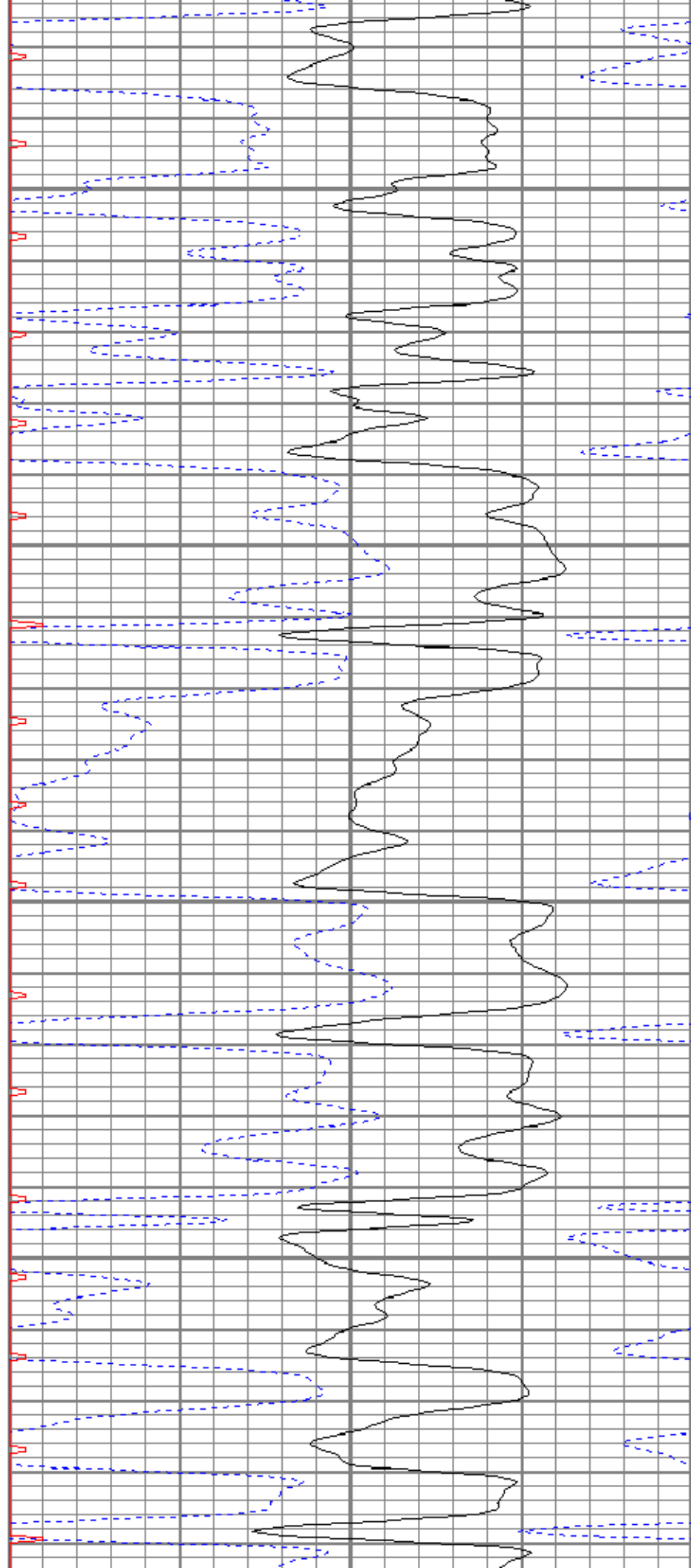


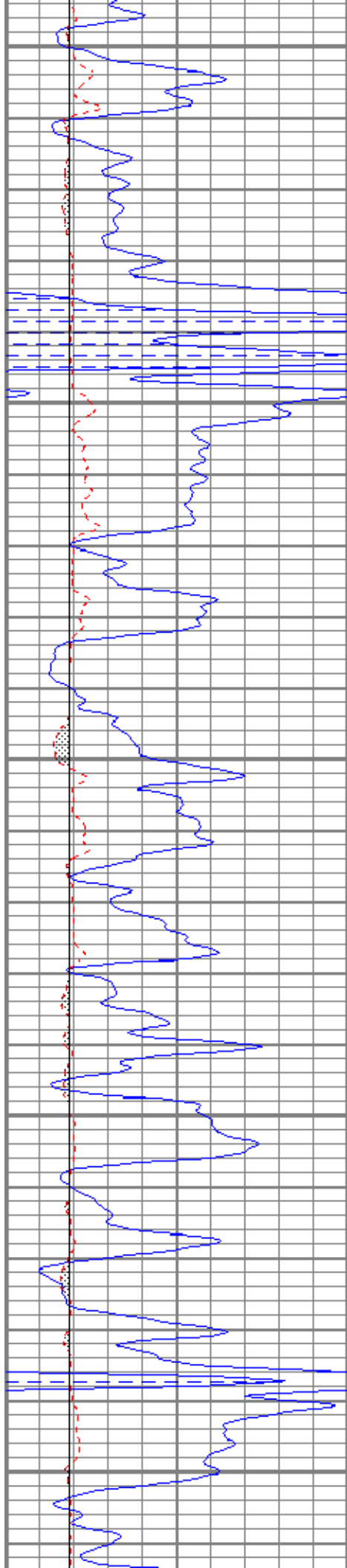
3200

3250

3300

3350





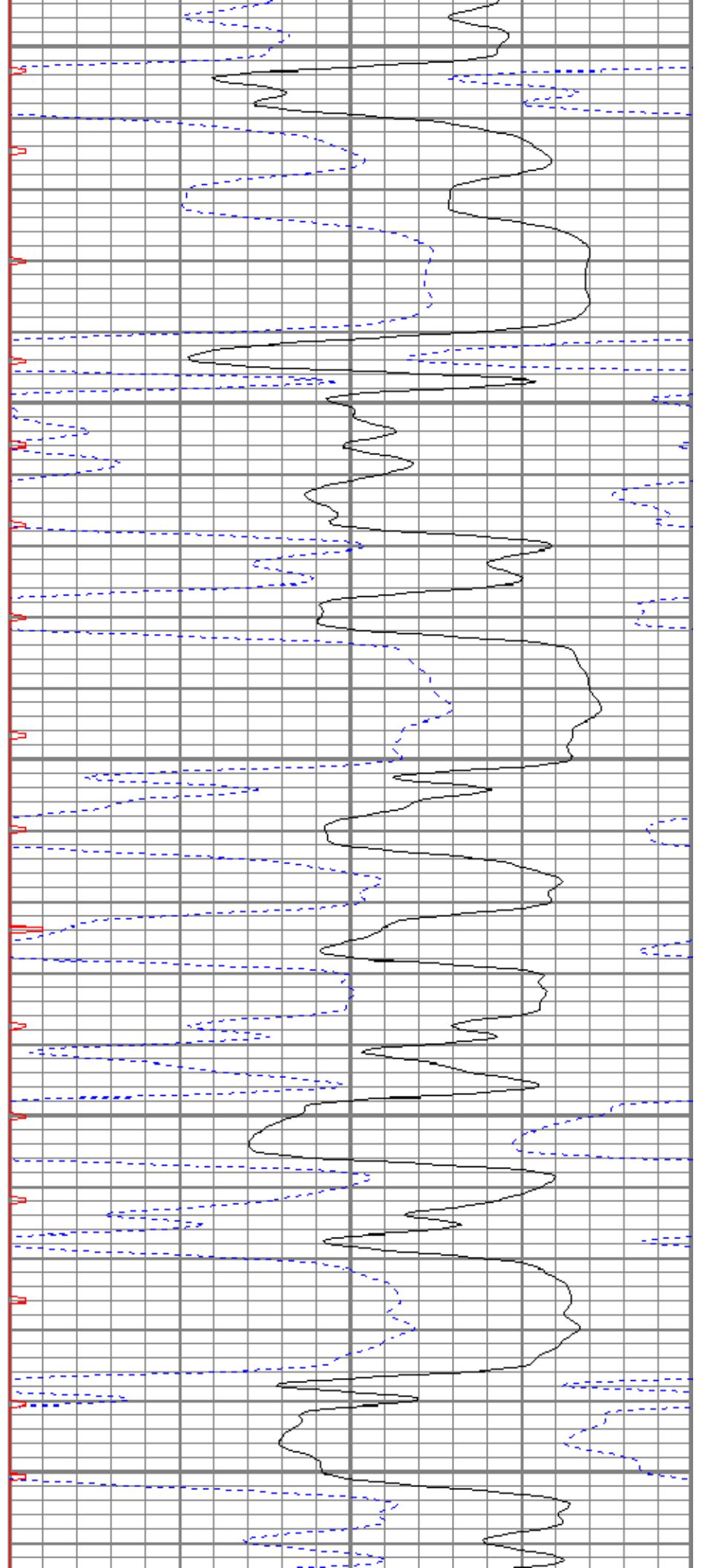
3400

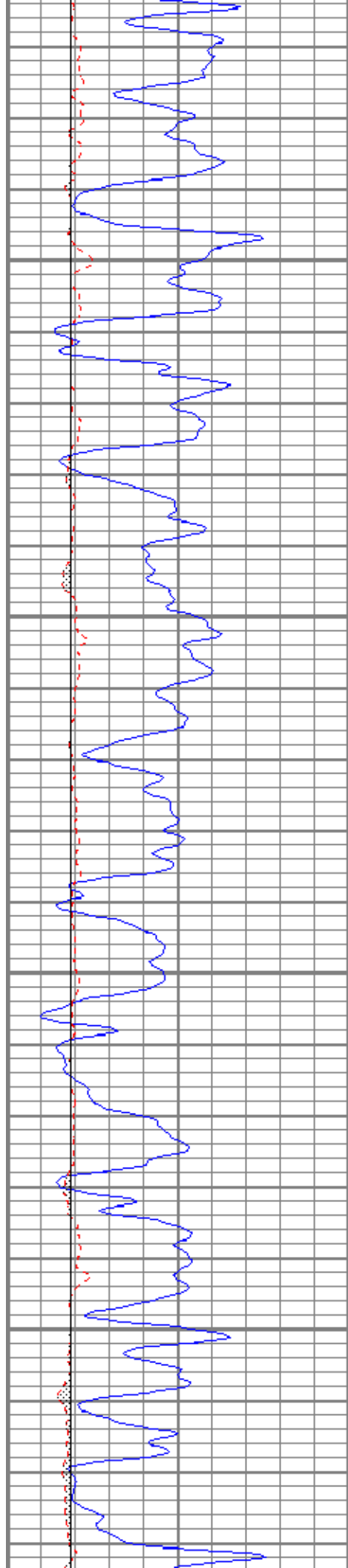
3450

3500

3550

3600



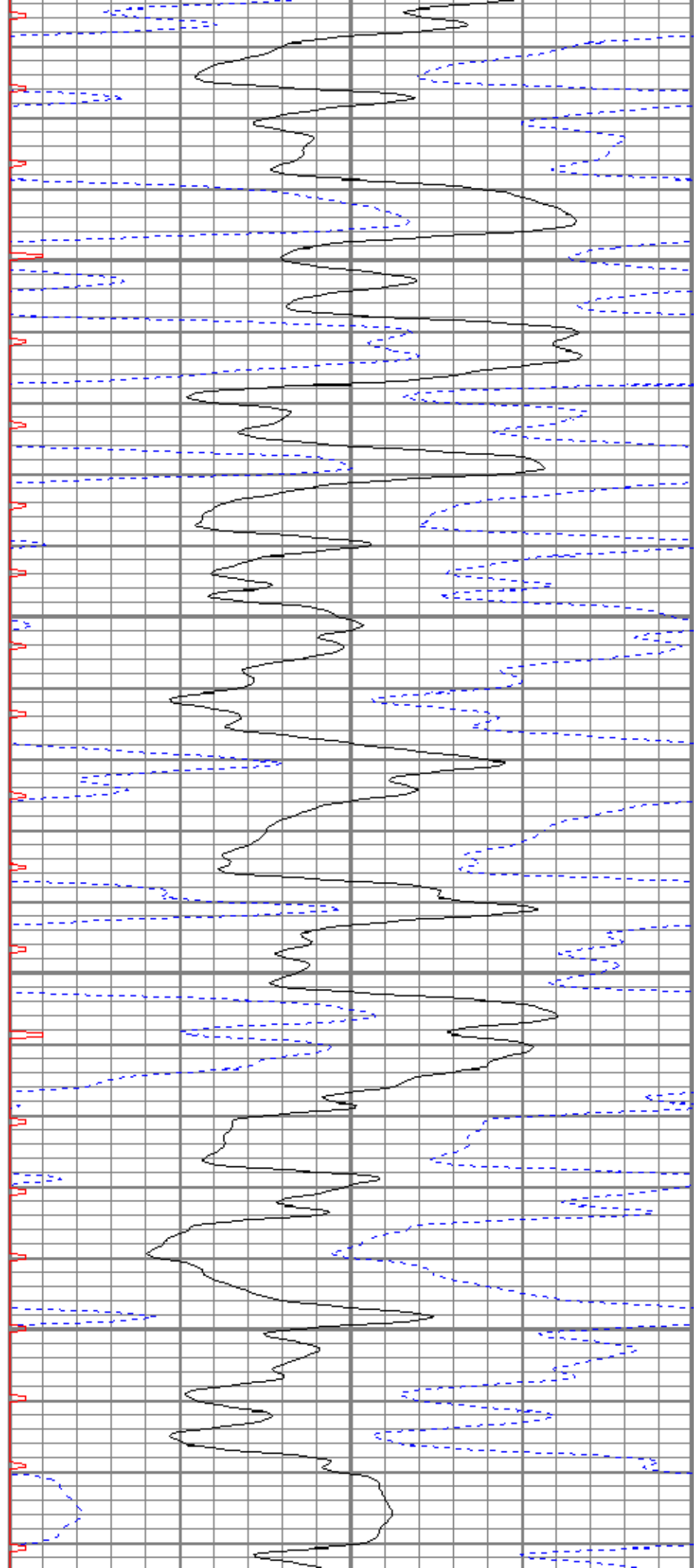


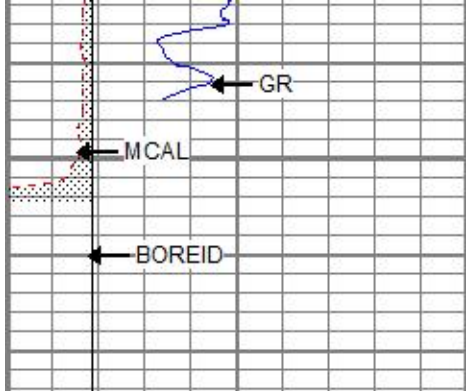
3650

3700

3750

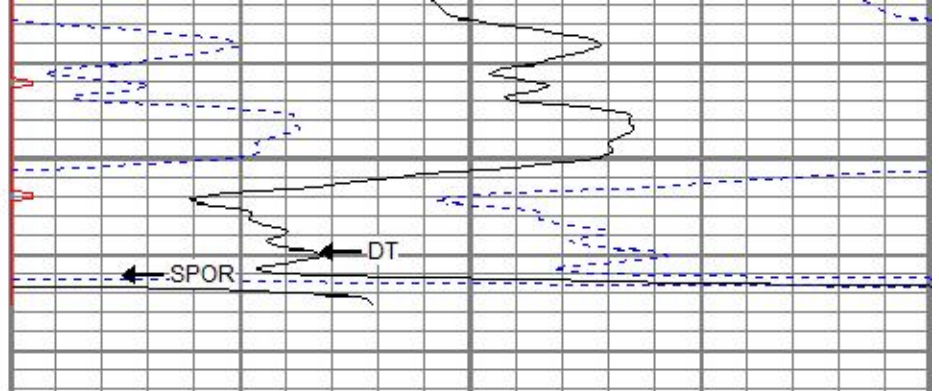
3800





3850

ITT →



0	GR (GAPI)	150
6	MCAL (in)	16
6	BOREID (in)	16

140	DT (usec/ft)	40
30	SPOR (pu)	-10
0	ITT (msec)	20

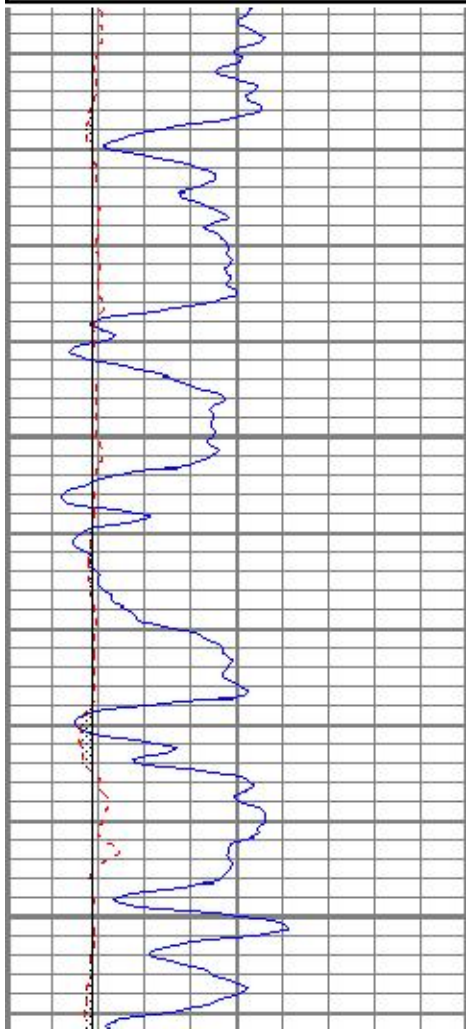


Repeat Pass

Database File pfdaneghansenfoundation#1-15oh.db
 Dataset Pathname pass3
 Presentation Format kbcs
 Dataset Creation Wed Apr 13 08:14:39 2016
 Charted by Depth in Feet scaled 1:240

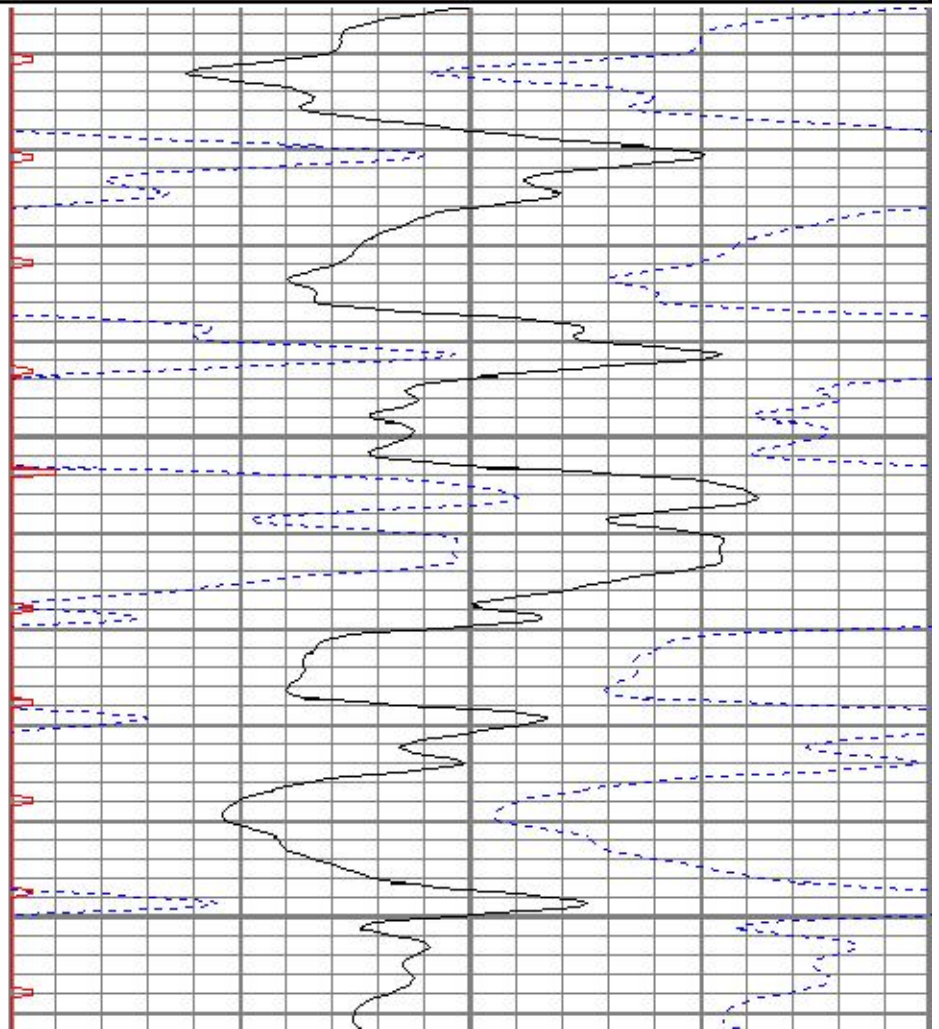
0	GR (GAPI)	150
6	MCAL (in)	16
6	BOREID (in)	16

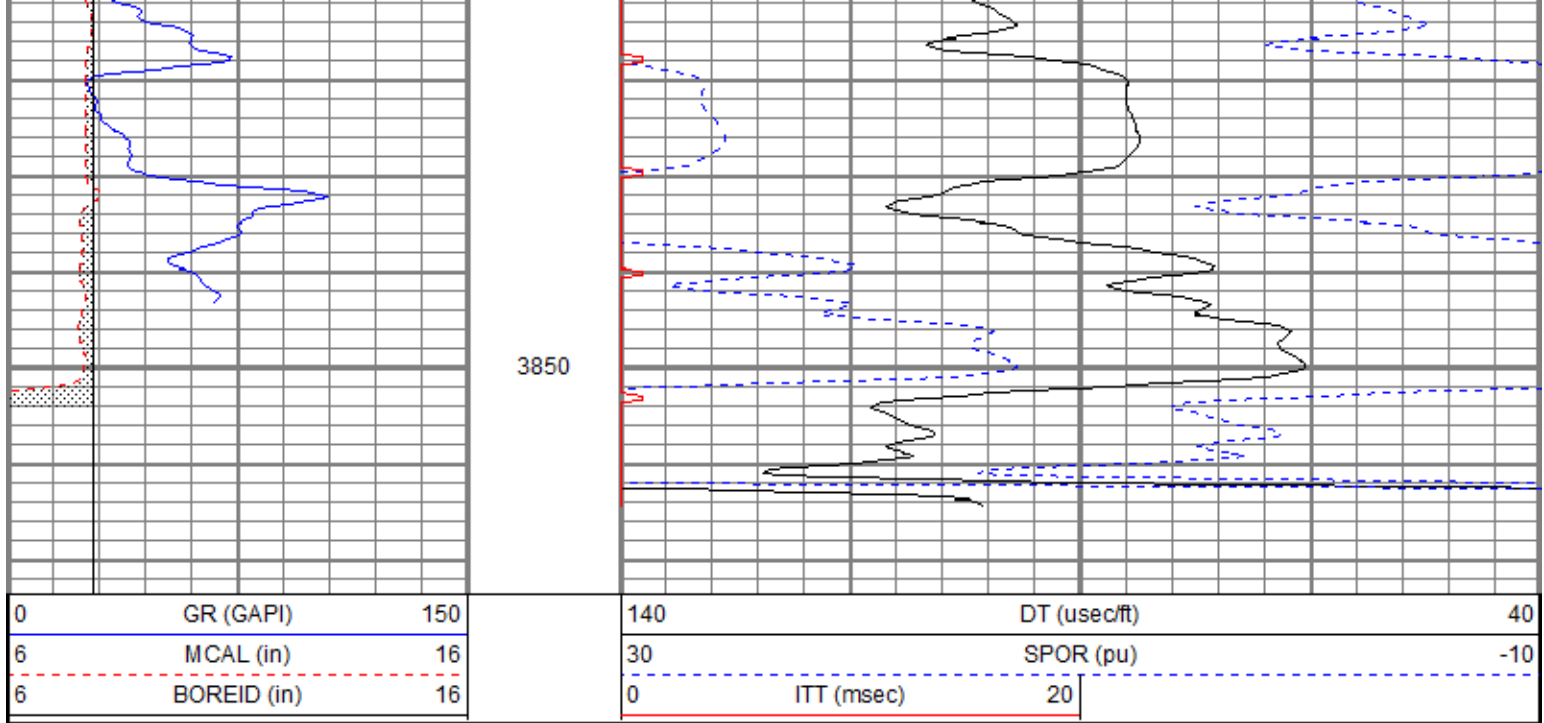
140	DT (usec/ft)	40
30	SPOR (pu)	-10
0	ITT (msec)	20



3750

3800





Calibration Report

Database File pfdaneghansenfoundation#1-15oh.db
 Dataset Pathname pass3
 Dataset Creation Wed Apr 13 08:14:39 2016

Microlog Calibration Report

Serial-Model: 1600-Pengo
 Performed: Fri Mar 18 11:00:13 2016

	Readings			References			Results	
	Zero	Cal		Zero	Cal		m	b
Normal	0.0009	0.5911	V	0.0000	10.0000	Ohm-m	16.9426	-0.0146
Inverse	0.0037	0.7678	V	0.0000	7.0000	Ohm-m	9.1608	-0.0339
Caliper	1.4734	4.3558	V	6.7000	12.0000	in	1.8387	3.9908

Gamma Ray Calibration Report

Serial Number: 2001
 Tool Model: OH
 Performed: Thu Jan 21 09:36:03 2016

Calibrator Value: 1.0 GAPI
 Background Reading: 0.0 cps
 Calibrator Reading: 1.0 cps

Sensitivity: 0.2400 GAPI/cps

Sensor	Offset (ft)	Schematic	Description	Length (ft)	O.D. (in)	Weight (lb)
GR	27.88		GR-OH (2001) 2001	3.56	3.25	40.00
MCAL MI	21.05 21.05		ML-Pengo (1600)	6.97	3.50	100.00

MN	21.05						
WVF4	13.79						
WVF3	12.79						
				SLT-G (101127) Sonic	15.71	3.50	250.00
WVF2	9.79						
WVF1	8.79						
				CENT-OHshort Open Hole short centralizer	4.04	3.50	50.00

Dataset: pfdaneghansenfoundation#1-15oh.db: field/well/run1/pass3
 Total length: 30.28 ft
 Total weight: 440.00 lb
 O.D.: 3.50 in