



**COMPENSATED DENSITY
NEUTRON
LOG**

Company		Prairie Fire Petroleum, LLC.	
Well		Dane G. Hansen Foundation #1-15	
Field		Wildcat	
County		Norton	
State		KS	
Company		Prairie Fire Petroleum, LLC.	
Well		Dane G. Hansen Foundation #1-15	
Field		Wildcat	
County		Norton	
State		KS	
Location:		API #: 15 137 20737 545' FNL & 2090' FWL	
Permanent Datum		SEC 15 TWP 2S RGE 21W	
Log Measured From		Ground Level	
Drilling Measured From		Elevation 2192'	
		Elevation	
		BCS	
		DIL	
		ML	
		K.B. 2197'	
		D.F. 2196'	
		G.L. 2192'	

Date	4-13-16
Run Number	One
Depth Driller	3875'
Depth Logger	3875'
Bottom Logged Interval	3852'
Top Log Interval	3200'
Casing Driller	8 5/8" @ 220'
Casing Logger	220'
Bit Size	7 7/8"
Type Fluid in Hole	Chemical
Density / Viscosity	9.3/53
PH / Fluid Loss	10.6/6.4
Source of Sample	Pit
Rm @ Meas. Temp	.9@60degf
Rmf @ Meas. Temp	.68@60degf
Rmc @ Meas. Temp	1.08@60degf
Source of Rmf / Rmc	Calculated
Rm @ BHT	.58@92degf
Time Circulation Stopped	3:45 a.m.
Time Logger on Bottom	6:30 a.m.
Maximum Recorded Temperature	92degf
Equipment Number	T127
Location	Hays, KS
Recorded By	Gus Pfanenstiel
Witnessed By	Mr. Kevin Bailey

<<< Fold Here >>>

All interpretations are opinions based on inferences from electrical or other measurements and we cannot and do not guarantee the accuracy or correctness of any interpretation, and we shall not, except in the case of gross or willful negligence on our part, be liable or responsible for any loss, costs, damages, or expenses incurred or sustained by anyone resulting from any interpretation made by any of our officers, agents or employees. These interpretations are also subject to our general terms and conditions set out in our current Price Schedule.

Comments

West out of Phillipsburg to 12 Rd.
North to I Rd. West 1/2 mile,
South into.



Main Pass

Database File pfdaneghansenfoundation#1-15oh.db
 Dataset Pathname pass2.1
 Presentation Format digital_kcdnl
 Dataset Creation Wed Apr 13 07:14:31 2016
 Charted by Depth in Feet scaled 1:240

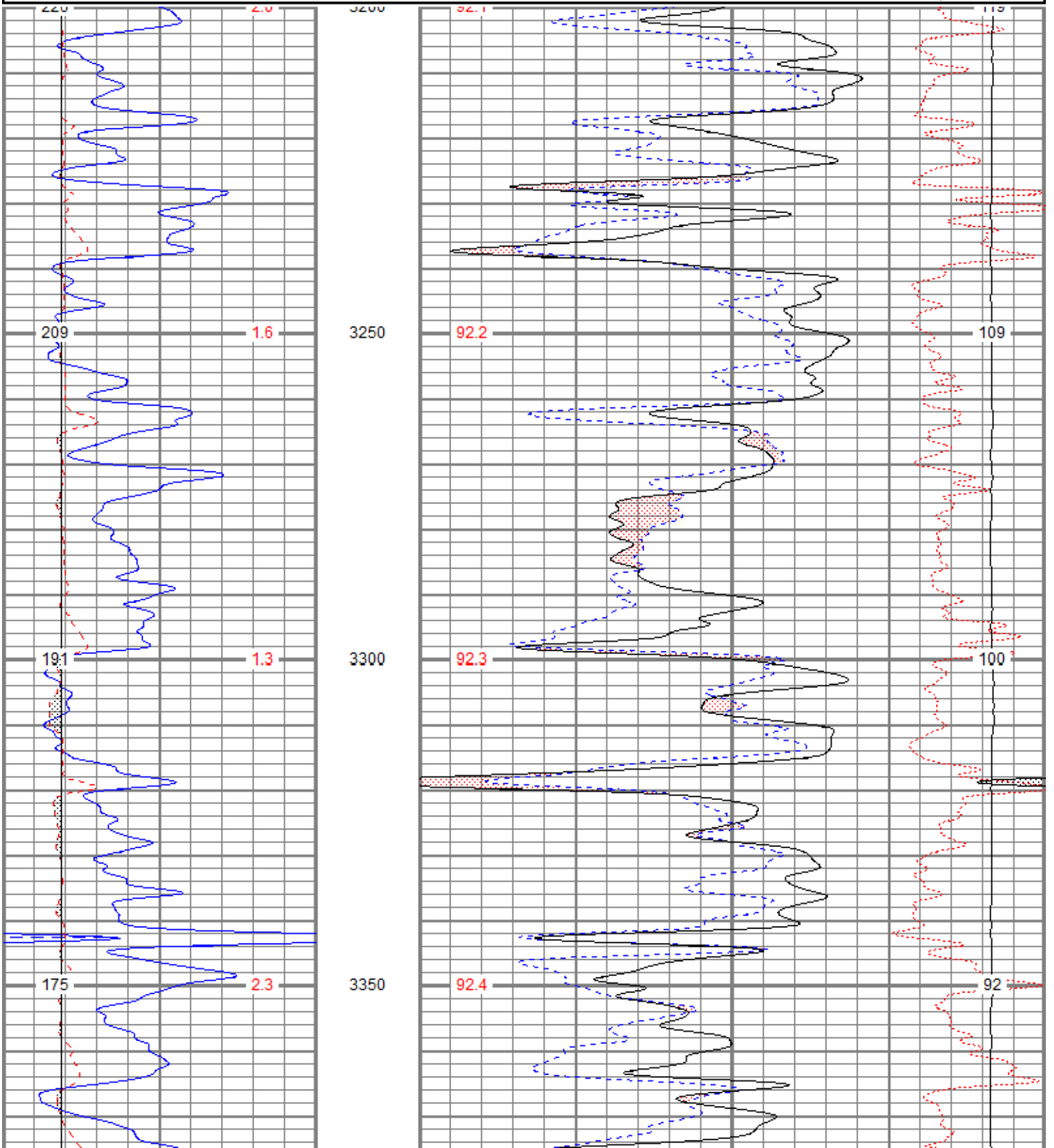
0	GR (GAPI)	150
6	DCAL (in)	16
6	BOREID (in)	16

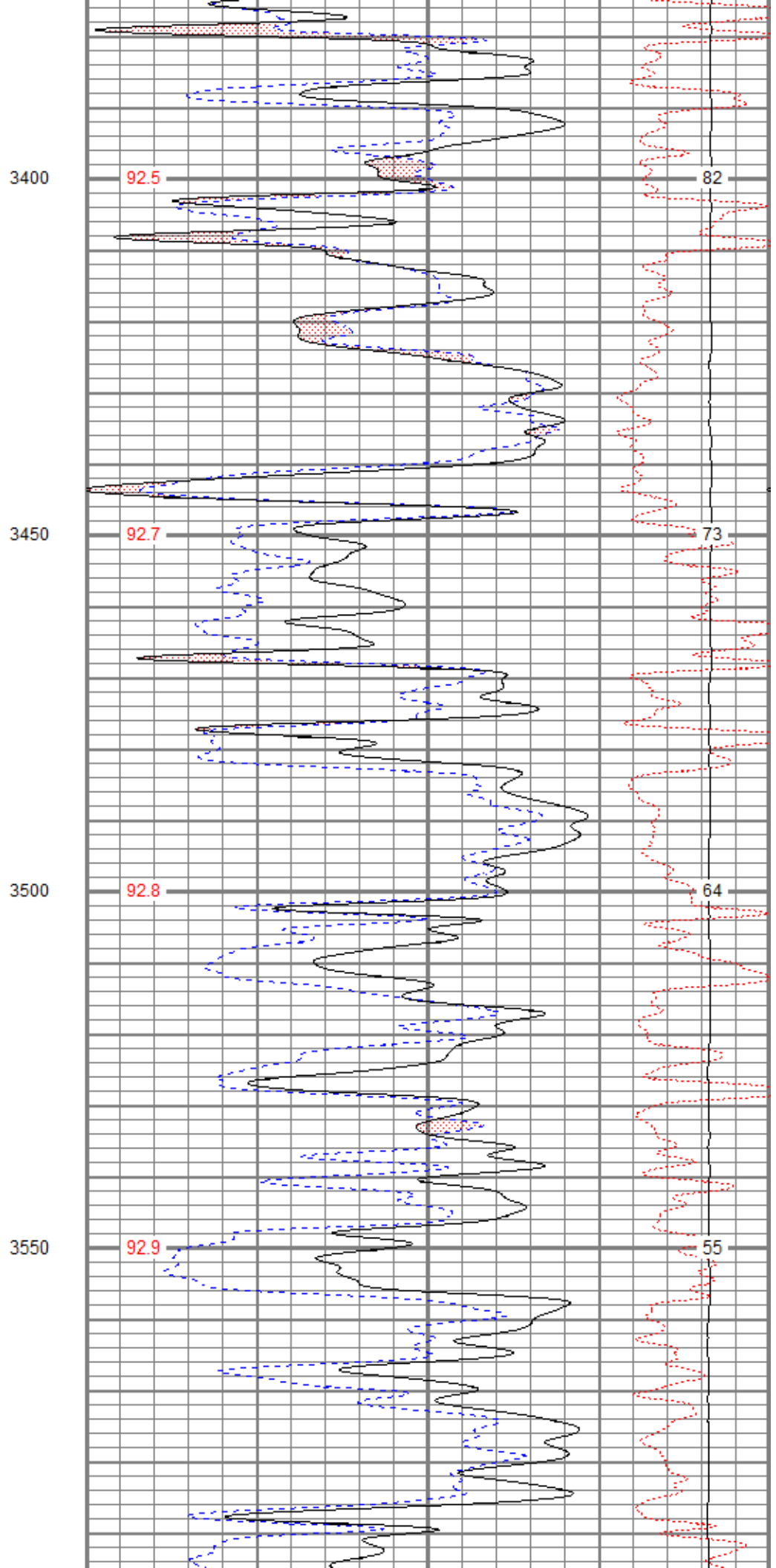
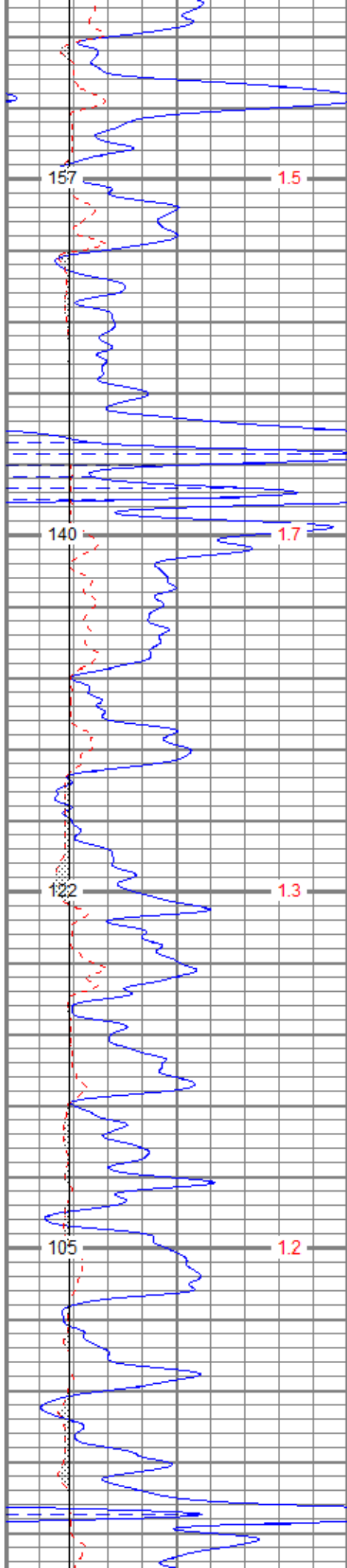
TBHV (ft3)	DEVI (deg)
------------	------------

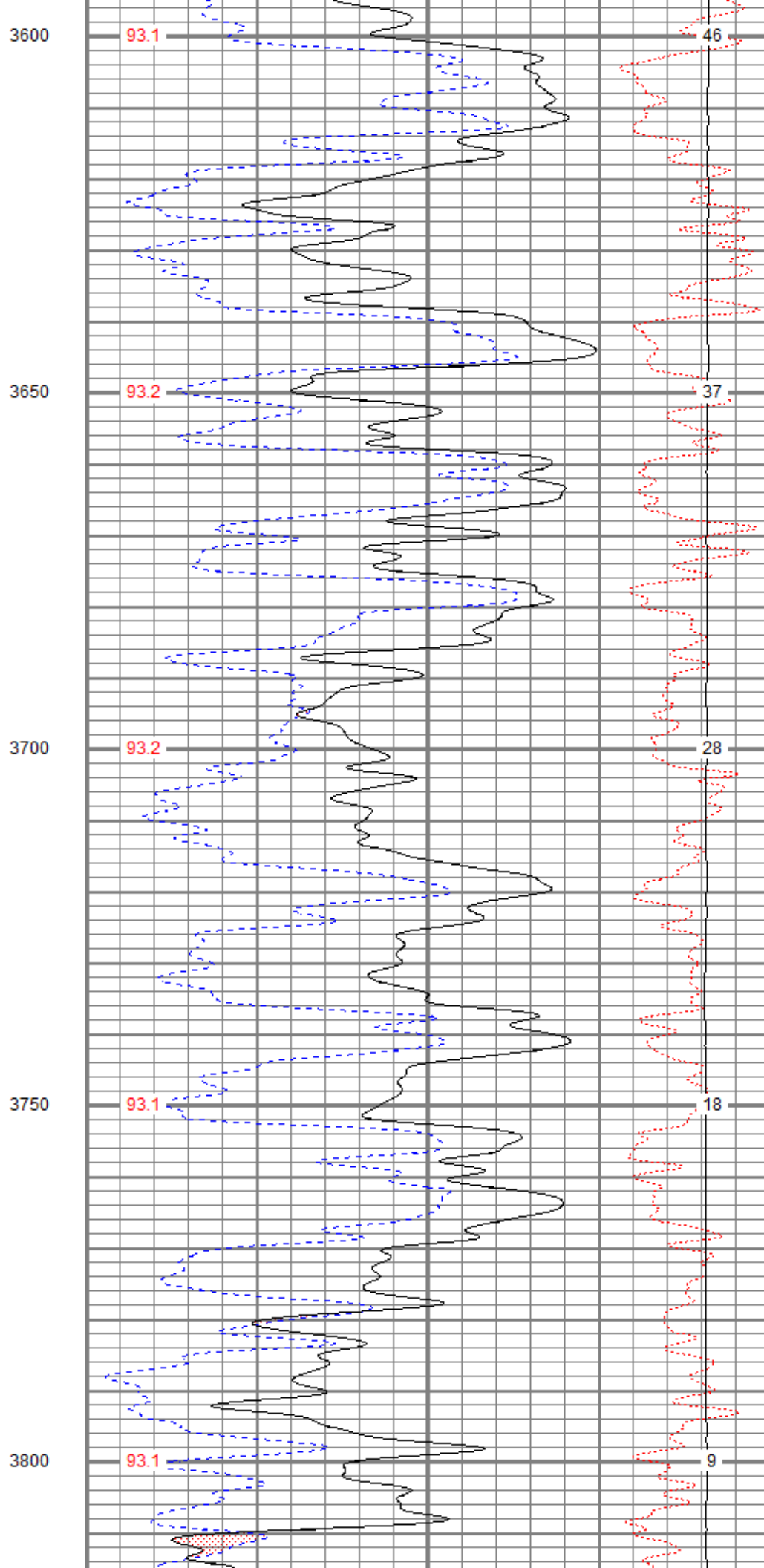
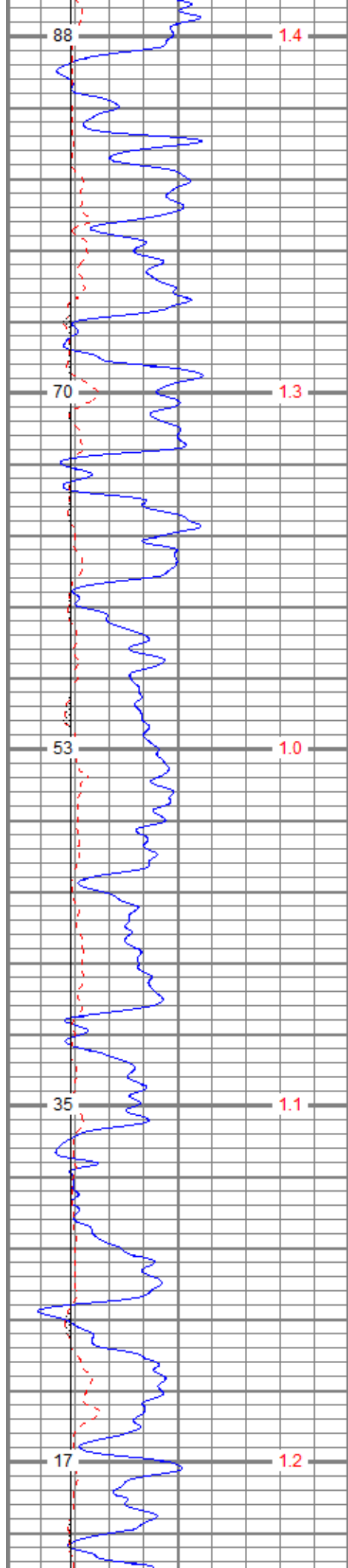
30	NPOR (pu)	-10
30	DPOR (pu)	-10
70	DPOR (pu)	30

TEMP (degF)	-0.25	RHOC (g/cc)	0.25
	8000	LTEN (lb)	0

ABHV (ft3)

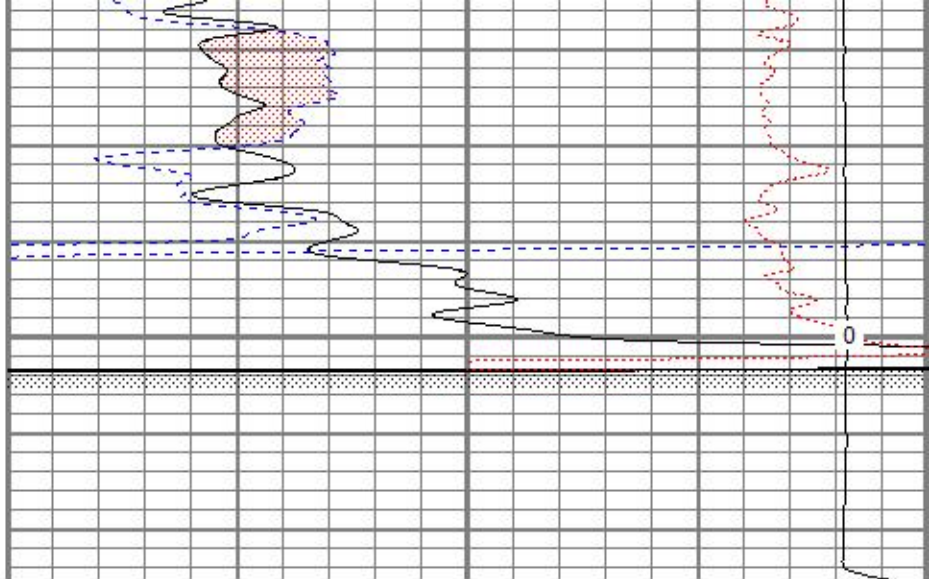








3850



0	GR (GAPI)	150
6	DCAL (in)	16
6	BOREID (in)	16
TBHV (ft3)		DEVI (deg)

30	NPOR (pu)	-10
30	DPOR (pu)	-10
70	DPOR (pu)	30
TEMP (degF)	-0.25	RHOC (g/cc) 0.25
	8000	LTEN (lb) 0

ABHV (ft3)



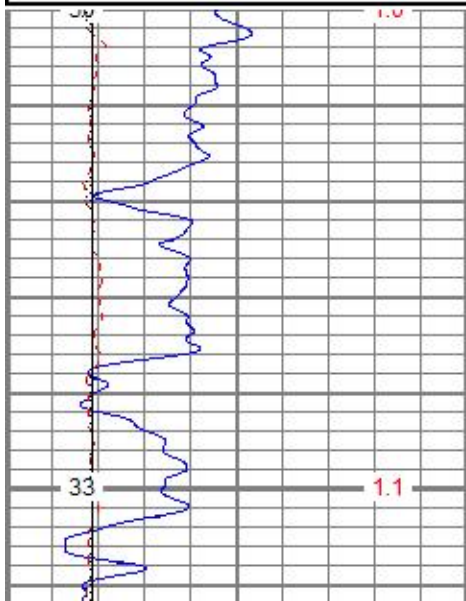
Repeat Pass

Database File pfdaneghansenfoundation#1-15oh.db
 Dataset Pathname pass1
 Presentation Format digital_kcdnl
 Dataset Creation Wed Apr 13 06:55:49 2016
 Charted by Depth in Feet scaled 1:240

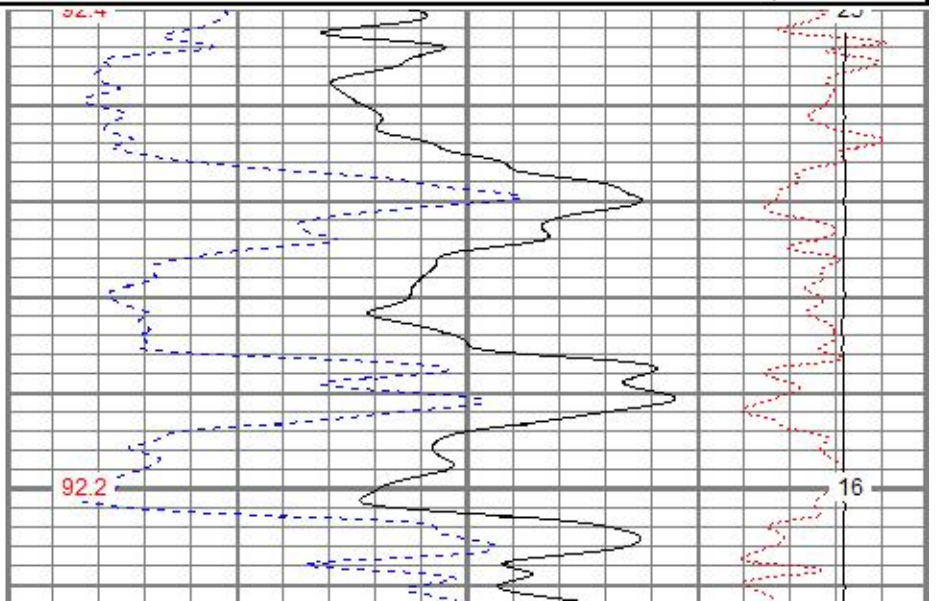
0	GR (GAPI)	150
6	DCAL (in)	16
6	BOREID (in)	16
TBHV (ft3)		DEVI (deg)

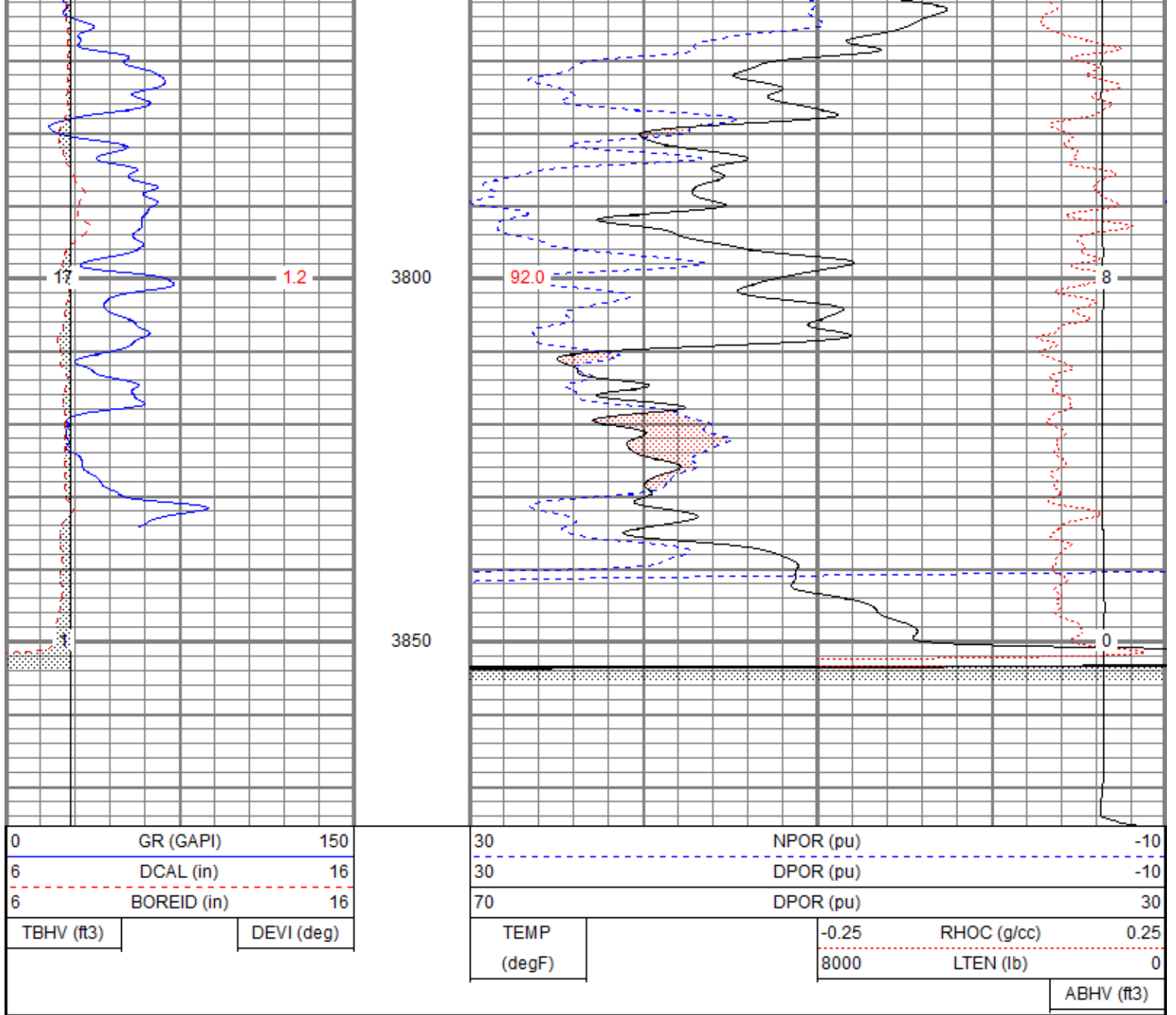
30	NPOR (pu)	-10
30	DPOR (pu)	-10
70	DPOR (pu)	30
TEMP (degF)	-0.25	RHOC (g/cc) 0.25
	8000	LTEN (lb) 0

ABHV (ft3)



3750





Calibration Report

Database File pfdaneghansenfoundation#1-15oh.db
 Dataset Pathname pass1
 Dataset Creation Wed Apr 13 06:55:49 2016

Dual Induction Calibration Report

Serial-Model: 080522-Probe
 Surface Cal Performed: Mon Mar 14 11:26:37 2016
 Downhole Cal Performed: Mon Mar 14 11:26:40 2016
 After Survey Verification Performed: Mon Mar 14 11:26:42 2016

Surface Calibration

Loop:	Readings			References			Results	
	Air	Loop		Air	Loop		m	b
Deep	-0.040	0.651	V	0.000	400.000	mmho/m	578.981	22.871
Medium	-0.028	0.742	V	0.000	464.000	mmho/m	602.582	16.690
Internal:	Zero	Cal		Zero	Cal		m	b
Deep	-0.016	0.653	V	0.000	400.000	mmho/m	598.311	9.396
Medium	-0.025	0.747	V	0.000	464.000	mmho/m	601.262	14.808

Downhole Calibration			Readings		References		Results	
	Zero	Cal		Zero	Cal		m'	b'
Deep	6.834	401.088	mmho/m	13.778	400.855	mmho/m	0.982	7.068
Medium	-2.964	468.230	mmho/m	1.850	466.869	mmho/m	0.987	4.775
LL3		7.145	V		750.000	Ohm-m		
		0.016	V		12.000	Ohm-m		
		-7.248	V		3745.000	mmho-m		

After Survey Verification			Readings		Targets		Results	
	Zero	Cal		Zero	Cal		m'	b'
Deep	0.000	0.000	mmho/m	6.834	401.088	mmho/m	1.000	0.000
Medium	0.000	0.000	mmho/m	-2.964	468.230	mmho/m	1.000	0.000
LL3		0.000	Ohm-m		750.000	Ohm-m		
		0.000	Ohm-m		12.000	Ohm-m		
		0.000	mmho-m		3745.000	mmho-m		

Neutron Calibration Report

Serial Number:	2301AN		
Tool Model:	Oilex		
Performed:	(Not Performed)		
Calibrator Value:	1	NAPI	
Calibrator Reading:	1	cps	
Sensitivity:	1	NAPI/cps	

Gamma Ray Calibration Report

Serial Number:	1		
Tool Model:	A		
Performed:	Sat Apr 09 21:14:16 2016		
Calibrator Value:	1.0	GAPI	
Background Reading:	0.0	cps	
Calibrator Reading:	1.0	cps	
Sensitivity:	0.7000	GAPI/cps	

Temperature Calibration Report

Serial Number:	1		
Tool Model:	A		
Performed:	Sat Apr 09 21:14:20 2016		
	Reference	Reading	
Low Reference:	0.00 degF	0.00	degF
High Reference:	32.00 degF	32.00	degF
Gain:	1.00		
Offset:	0.00		
Delta Spacing	1		

Inclinometer Calibration Report

Performed:	Fri Nov 13 12:11:33 2015				
	Low Read.	High Read.	Low Ref.	High Ref.	
X Accelerometer	205.00	1843.00	-1.00	1.00	gee

Y Accelerometer

205.00

1843.00

-1.00

1.00

gee

Z Accelerometer

gee

Sensor	Offset (ft)	Schematic	Description	Length (ft)	O.D. (in)	Weight (lb)	
PSTAT	39.99		CHD-STD	0.50	1.69	1.00	
GR	38.71		ADT1PULSE-A (1) Pulsed Interface Tool #1	0.83	3.50	10.00	
TEMP	35.74		ADT1ADC-A (1) Analog Interface #1	0.83	3.50	10.00	
ASTAT	35.45		ADT1SENSORS-A (1)	4.54	3.50	10.00	
GRD	35.20		NEU-Oilex (2301AN) Oilex 100V NEU	4.27	3.50	80.00	
ACCY	35.03						
ACCX	35.03						
SSTAT	35.03						
NEU	34.26						
LStat	24.30						
LS8	23.64		ADT1LITH-A (1) Admyr Litho Density Tool	9.29	3.50	240.00	
LS7	23.64						
LS6	23.64						
LS5	23.64						
LS4	23.64						
LS3	23.64						
LS2	23.64						
LS1	23.64						
LSV	23.64						
LSD	23.62						
SSV	23.43						
SS8	23.43						
SS7	23.43						
SS6	23.43		DIL-Probe (080522) Probe Dual Induction	21.47	4.00	345.00	
SS5	23.43						
SS4	23.43						
SS3	23.43						
SS2	23.43						
SS1	23.43						
DCAL	23.37						
SSD	23.04						
SP	10.60						
CILD	10.60						
CILM	6.89	Dataset: pfdaneghansenfoundation#1-15oh.db: field/well/run1/pass1					
RLL3	1.70	Total length: 40.07 ft					
TR_Mon	0.00	Total weight: 696.00 lb					
		O.D.: 4.00 in					