

**Fall & Associates**  
 Stake and Elevation Service  
 P.O. Box 222  
 Pretty Prairie, KS. 67570  
 785-243-7506

Date 5-17-16

Invoice Number 0428161

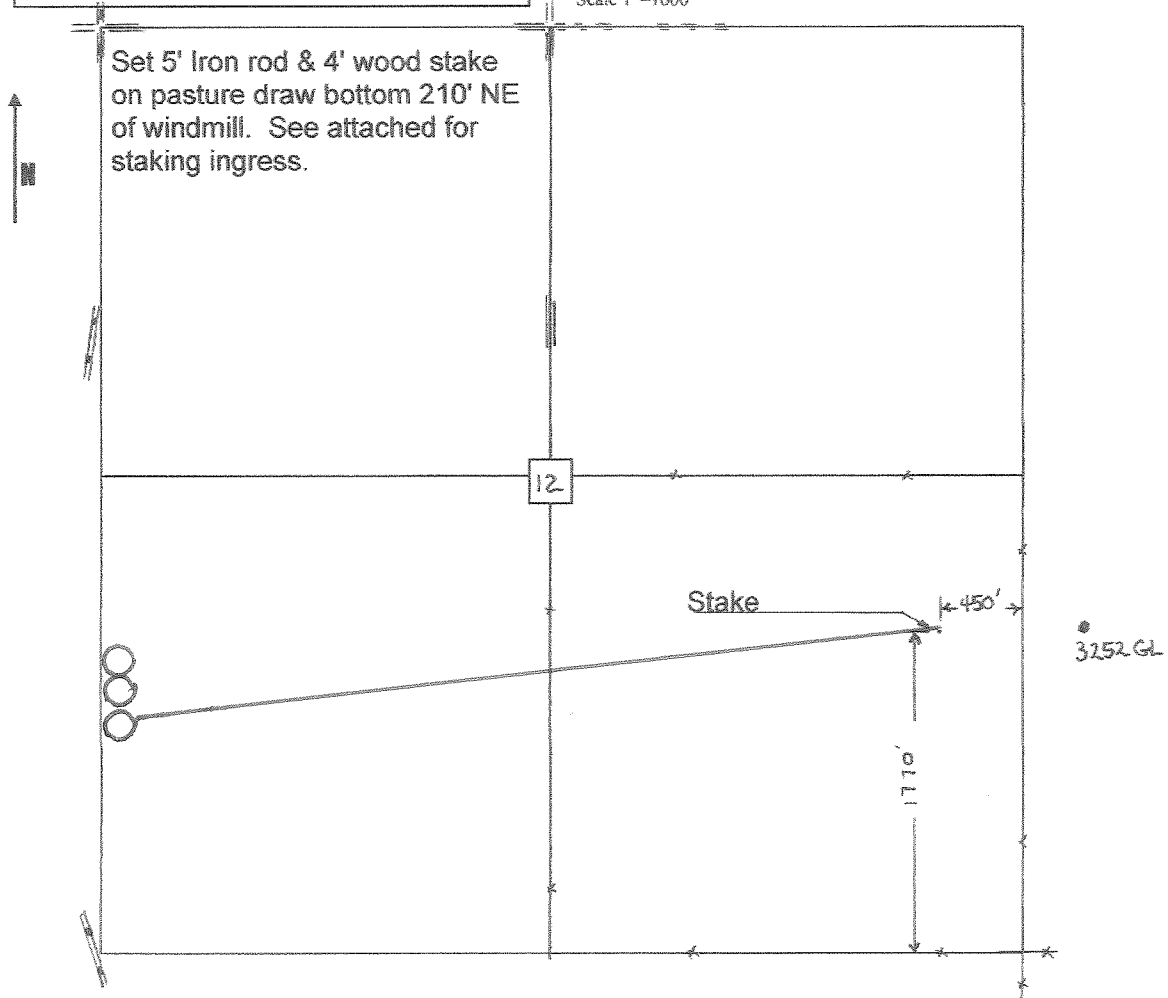
MURFIN DRILLING	1-12			Munn
Operator	Number			Farm Name
Cheyenne-KS	12	2s	38w	1770'FSL 450'FEL
County-State	S	T	R	Location

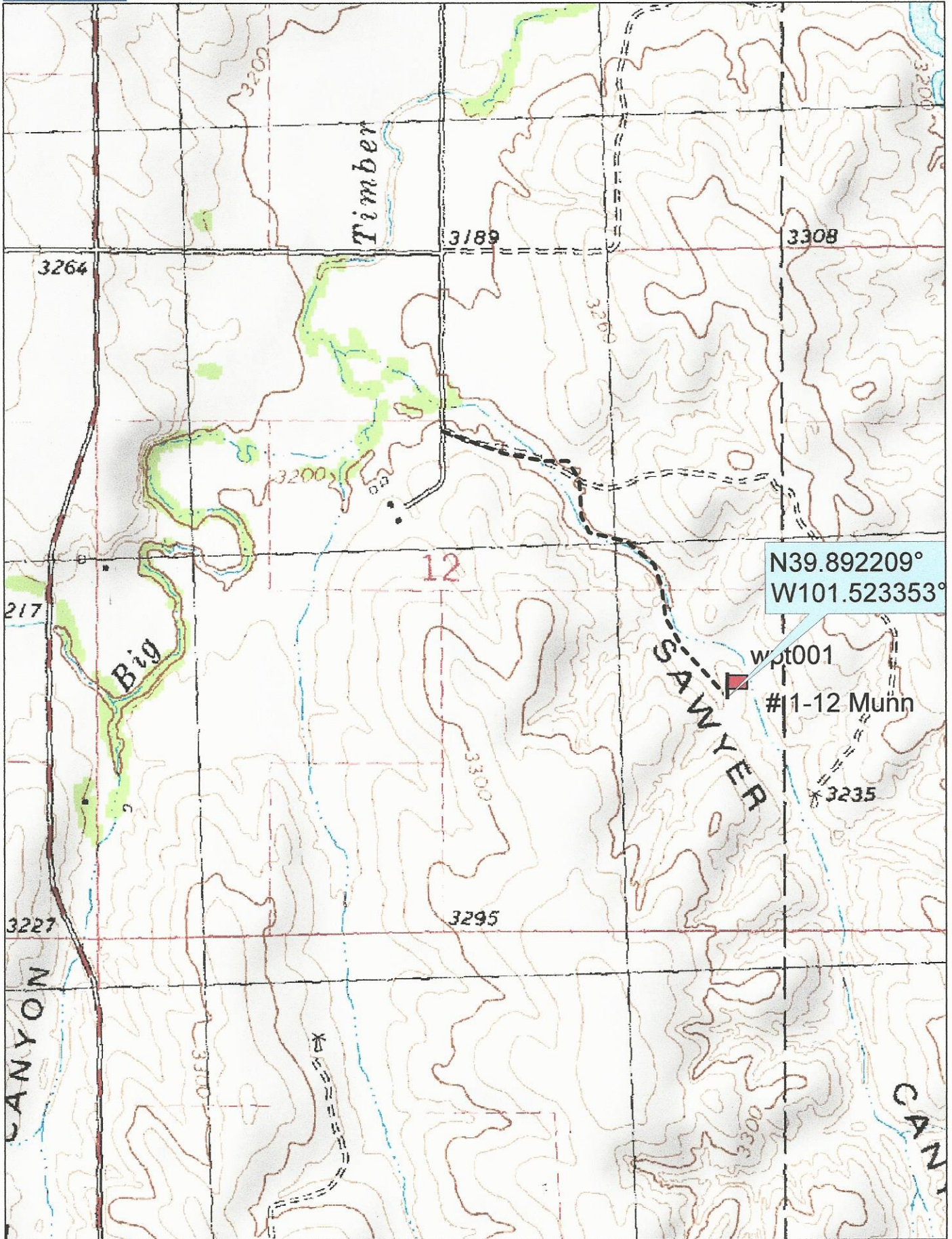
Murfin Drilling  
 250 N. Water  
 Suite 300  
 Wichita, KS. 67202

Elevation 3223 Gr.

Ordered By: Shauna

Scale 1"=1000'





Data use subject to license.

© DeLorme. Topo North America™ 9.

www.delorme.com

