

John Goldsmith Wellsite Service

Cell and Home Phone:
316-640-0236

427 Roosevelt St.
Cheney, KS 67025

Scale 1:240 (5"=100') Imperial Measured Depth Log

Well Name: #2-12 McDaniel
Location: 2016' FNL & 2316' FEL, NW SW SW NE, 12-15S-34W
License Number: API: 15-109-21440
Spud Date: 12/05/2015
Surface Coordinates: LAT 38.7665453
LONG -101.0475436
Bottom Hole Vertical hole
Coordinates: 3/4 Degree Deviation
Ground Elevation (ft):2842' **K.B. Elevation (ft):** 2847'
Logged Interval (ft):3500' **To:** RTD **Total Depth (ft):**4505'
Formation: Mississippian at RTD
Type of Drilling Fluid:Chemical

Region: Logan County
Drilling Completed:12/12/2015

Printed by MUD.LOG from WellSight Systems 1-800-447-1534 www.WellSight.com

OPERATOR

Company: Concorde Resources Corp.
Address: 111 South Main Street
Eufaula, OK 74432
(918) 689-9595

GEOLOGIST

Name: John Goldsmith
Company: John Goldsmith Wellsite Service
Address: 427 Roosevelt St.
Cheney, KS 67025
(316) 640-0236

COMMENTS

Contractor: WW Drilling Rig #8
Pusher: Sid Deutscher (785) 259-2382
Surface Casing: 7 joints of 8 5/8" set at 302'
Production Casing: 5.5" Production Casing was installed.
Mud by: MudCo Service Mud
DST's by: Trilobite Testing
Logs by: Pioneer Wireline Services (DIL, CN-CD, ML)
RTD=4505'
LTD=4505'

FORMATION TOPS

FORMATION	SAMPLE TOPS		LOG TOPS	
	Depth	Datum	Depth	Datum
Heebner Shale	3712'	-865	3712'	-865
Toronto	3730'	-883	3730'	-883
Lansing	3754'	-907	3754'	-907
Muncie Creek Shale	3928'	-1081	3928'	-1081
Stark Shale	4014'	-1167	4013'	-1166
Hushpuckney Shale	4054'	-1207	4054'	-1207
Base of KC	4090'	-1243	4090'	-1243
Marmaton	4128'	-1281	4128'	-1281
Altamont	4148'	-1301	4148'	-1301
Pawnee	4231'	-1384	4232'	-1385
Little Osage Shale	4258'	-1411	4258'	-1411
Excello Shale	4275'	-1428	4274'	-1427
Cherokee Shale	4306'	-1459	4306'	-1459
Johnson Zone	4351'	-1504	4351'	-1504
Morrow	4409'	-1562	4409'	-1562
Mississippian	4456'	-1609	4456'	-1609
RTD	4505'	-1658		
LTD			4505'	-1658

DSTs

DST #1 4104'-4145' 12-10-2015 30/30/30/30 "Marmaton"
 1st Blow: 1/2" Blow held steady (No BB)
 2nd Blow: No Blow (No BB)
 IFP: 22-24# ISIP: 676# FFP: 26-26# FSIP: 553#
 HYD: 2021-2014#
 Rec: 20' OCM (5% Oil)

DST #2 4106'-4170' 12-10-2015 30/30/30/30 "Altamont"
 1st Blow: 1/2" Blow built to 1" (No BB)
 2nd Blow: Surface Blow (No BB)
 IFP: 22-25# ISIP: 539# FFP: 27-28# FSIP: 461#
 HYD: 2052-1995#
 Rec: 30' VSOCM (1% Oil)

DST #3 4270'-4326' 12-11-2015 30/30/30/15 "Ft Scott"
 1st Blow: Surf Blow built to 3/4" (No BB)
 2nd Blow: No Blow (No BB)
 IFP: 22-27# ISIP: 1065# FFP: 29-34# FSIP: 788#
 HYD: 2155-2050#
 Rec: 10' OSM

ROCK TYPES

 Anhy	 Dol	 Sltst	 Gry sh
 Cht	 Lmst	 Ss	 Sandylms
 Congl	 Shale	 Carb sh	 Shaly ls

ACCESSORIES

EVENTS

- Circ
- Conn

FOSSIL

- Brach
- Bryozoa
- Crin

- Foram
- Fossil
- Gastro
- Oolite
- Ostra
- Plant
- Fuss
- Oomold

- Foram
- Fossil
- Gastro
- Oolite
- Ostra
- Plant
- Fuss
- Oomold

MINERAL

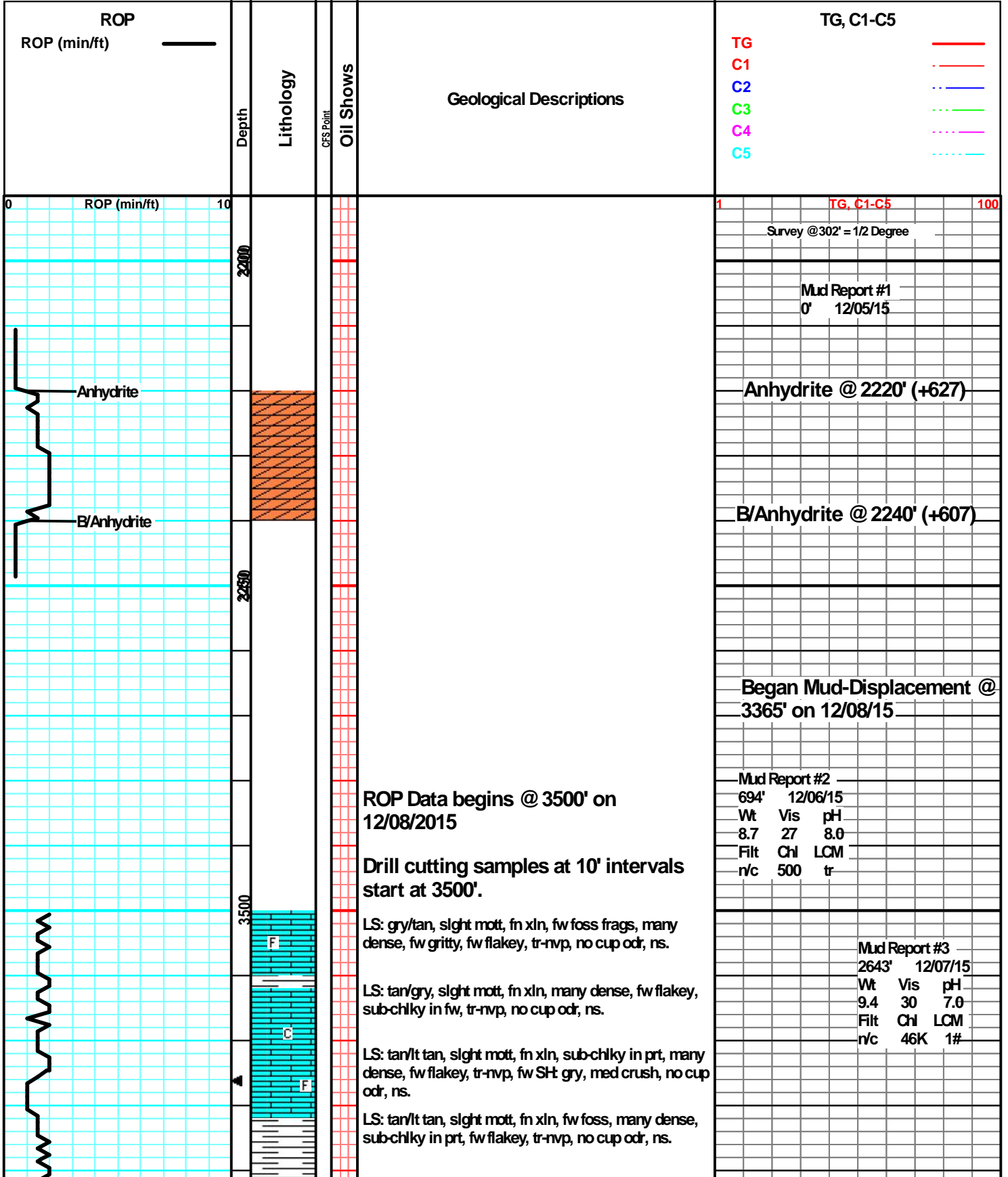
- Calc
- Chtdk
- Chtlt
- Feldspar
- Glau
- Nodule
- Pyr

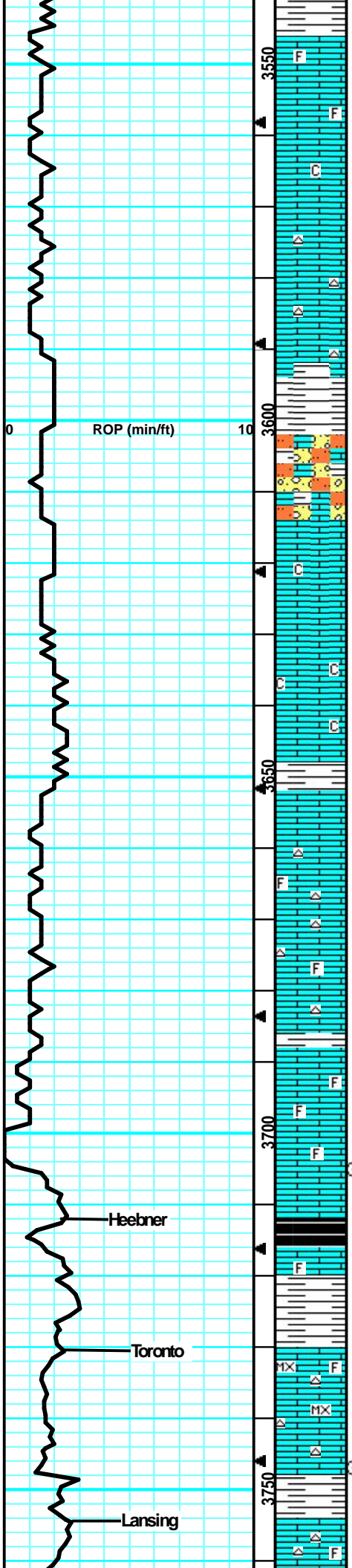


Sil

TEXTURE

- Chalky
- Crsxn
- Finexln
- Microxln





LS: tan/lt tan, slight mott, fn xln, fw foss frags, many dense, sm brittle, fw gritty, tr-nvp, fw pcs w/ drk min stns, no fluor/cut, no cup odr, ns.

LS: tan/lt tan, slight mott, fn xln, fw foss frags, many dense, sm brittle, tr-nvp, fw SHt gry, silty/gritty, fw StStn: gry, gritty, friable, no cup odr, ns.

LS: lt tan/tan, slight mott in prt, fn xln, mostly dense, sm brittle, sub-chlky in prt, tr-nvp, fw SHt gry, silty, gritty, no cup odr, ns.

LS: lt tan, mostly sing, fn xln, many dense, sm brittle, sub-chlky, tr-nvp, fw SHt gry/drk gry, silty, no cup odr, ns.

LS: lt tan/lt gry, sing, fn xln, mostly dense, sm hard, sub-chlky in fw, tr-nvp, fw SHt drk gry, silty, soft, fw Chert: wht/opaque, foss, sharp, no cup odr, ns.

LS: tan/lt gry, slight mott, fn xln, sm dense, many brittle, sub-chlky in prt, tr-nvp, fw SHt drk gry, silty, soft, no cup odr, ns.

LS: tan/gry, mott in prt, fn xln, sub chlky in prt, many flakey/mealy, brittle, tr-nvp, svrl SHt drk gry/blk, silty, carb, soft, no cup odr, ns.

LS: tan/gry, mott in prt, fn xln, sub-chlky, fw flakey/mealy, tr-nvp, fw SHt gry, silty, no cup odr, ns.

LS: tan/gry, mott in prt, fn xln, sm dense, sub-chlky in prt, sm flakey, tr-nvp, fw pcs pur chlk, no cup odr, ns.

LS: tan/lt gry, slight mott in prt, fn xln, sm dense, sub-chlky in prt, fw flakey, tr-nvp, fw SHt gry/brn, silty, no cup odr, ns.

LS: lt tan/lt gry, slight mott, fn xln, mostly brittle, sm gritty, sub-chlky, tr-nvp, abund SHt brn, silty, v soft, muddy like, no cup odr, ns.

LS: lt tan/lt gry, mostly sing, fn xln, sm dense, sm brittle, sub-chlky in prt, tr-nvp, fw pcs pur chlk, fw SHt brn, silty, soft, no cup odr, ns.

LS: lt tan/gry, sing, fn xln, mostly dense, sm brittle, fw sub-chlky, tr-nvp, fw pcs pur chlk, no cup odr, ns.

LS: lt tan/lt gry, sing, fn xln, many dense, sm brittle, sub-chlky, tr-nvp, sm pur chlk, fw Chert: wht/gry, foss, sharp, no cup odr, ns.

LS: tan/lt gry, mostly sing, fn xln, fw foss frags, mostly dense, fw brittle, tr-nvp, fw Chert: gry/wht, foss, sharp, fw pcs pur chlk, no cup odr, ns.

LS: gry/tan, slight mott, fn xln, many dense, sm brittle, chlky in prt, tr-nvp, svrl pcs pur chlk, fw SHt gry, silty, no cup odr, ns.

LS: gry/tan, slight mott, fn xln, fw foss frags, many dense, sm brittle, sub-chlky in prt, tr-nvp, fw pcs pur chlk, no cup odr, ns.

LS: tan/gry, slight mott, fn xln, sm foss, mostly dense, sm firm, tr-nvp, fw SHt gry/brn, silty, sm soft, no cup odr, ns.

LS: tan/gry, mott, in prt, fn xln, brittle, fw gritty like, pr in xln por in sm, drk hvy min stns, no fluor/cut, no cup odr, ns.

LS: tan/gry, mott in prt, fn xln, sm foss, many dense, sm flakey/mealy, tr-nvp, fw drk min stns, no fluor/cut, no cup odr, ns.

LS: lt tan/lt gry, sing, fn xln, fw foss frags, mostly dense, sm brittle, fw sub-chlky in prt, tr-nvp, svrl pcs pur chlk, no cup odr, ns.

LS: tan/gry, sing, micro-fn xln, mostly dense, sm firm, sub-chlky in prt, tr-nvp, fw Chert: lt gry/wht, sharp, no cup odr, ns.

LS: tan/gry, sing, fn xln, mostly dense, sm brittle, fw sub chlky, tr-nvp, fw SHt brn/gry, silty, sm soft, no cup odr, ns.

LS: tan/gry, sing, fn xln, fw foss frags, mostly dense, sm brittle, fw flakey like, tr-nvp, fw Chert: wht/lt tan,

1 TG, C1-C5 100

Mud Report #4
3636' 12/8/15

Wt	Vis	pH
8.7	63	11.5
Filt	Chl	LCM
7.2	2.5K	2#

Short Trip @ 3705'
35 Stands

CFS @ 3705'
(25"/45")

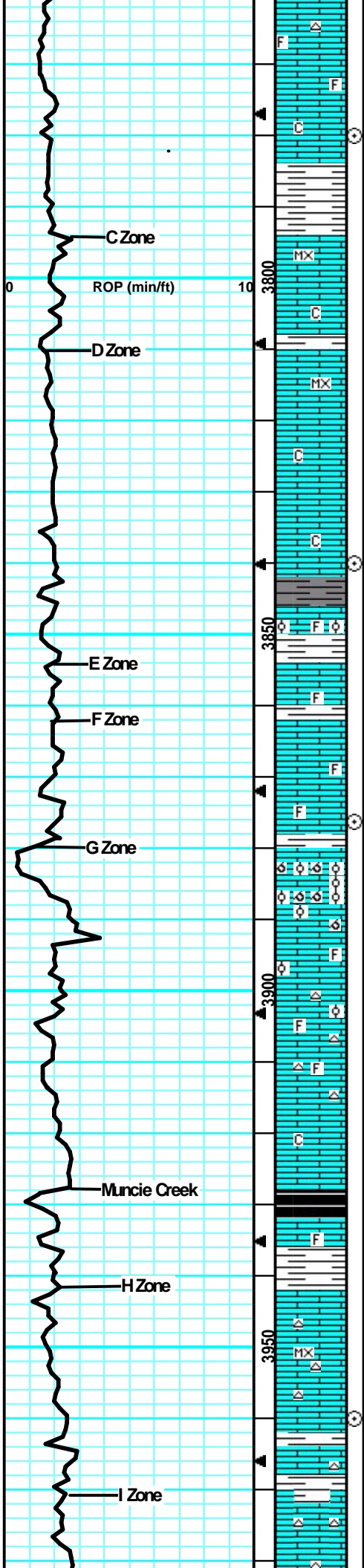
Heebner @ 3713' (-865)

Toronto @ 3730' (-883)

CFS @ 3746'
(30"/60")

Gas Detector
Recalibrated

Lansing @ 3754' (-907)



LS: tan/lt tan, mostly sing, fn xln, sm foss, many dense, sm brittle, fw flakey like, tr-nvp, sm pur chlk, no cup odr, ns.

LS: gry/tan, mostly sing, fn xln, sm foss in prt, mostly dense, sm brittle, fw sub-chlky in prt, tr-nvp, fw pcs pur chlk, fw SH: gry/brn, silty, med crush, no cup odr, ns.

LS: gry/lt tan, mostly sing, micro-fn xln, dense, sm brittle, sub-chlky, tr-nvp, sbrl SH: brn/gry, silty, no cup odr, ns.

LS: tan/lt tan, sing, micro-fn xln, dense, brittle, chlky, tr-nvp, svrl pcs pur chlk, fw pcs w/ lght brn patchy min stns, no fluor/cut, no cup odr, ns.

LS: lt tan/lt gry, mostly sing, micro-fn xln, v fw foss frags, many dense, sm brittle, fw firm, sub-chlky in prt, sm SH: brn, silty, sm v soft, no cup odr, ns.

LS: lt gry/tan, sing, fn xln, mostly dense, sm brittle, sub-chlky in prt, v fw flakey/mealy, tr-nvp, sm pur chlk, no cup odr, ns.

LS: gry/tan, slight mott, fn xln, many brittle, flakey/mealy in prt, tr-nvp, 2 pcs w/ lght brn spottd stn, v wk fluor, pos cut resid, 1 pc w/ v tiny sphr of oil on brk in wtr, no cut odr.

LS: tan/gry, slight mott, fn xln, fw foss, sm ool, many brittle, sub-chlky in prt, tr-pr intool por in cpl pcs, sm SH: gry/blu, silty, soft, no cup odr, ns.

LS: tan/gry, slight mott in prt, fn xln, fw foss in prt, many flakey/mealy, tr-pr intxln por in sm, fw SH: drk gry, silty, no cup odr, ns.

LS: gry/tan, mostly sing, fn xln, fw dense, many brittle, tr-pr ppt intxln por in cpl pcs, spottd drk brn stns, wk-? fluor, nsfo, no cup odr.

LS: tan/lt tan, mostly sing, fn xln, v fw foss frags, mostly dense, many brittle, fw sub-chlky in prt, tr-nvp, no cup odr, ns.

LS: gry/tan, slight mott, fn xln, fw foss frags, msotly dense, sm brittle, tr-nvp, fw pcs SH: gry/blu, silty, no cup odr, ns.

LS: tan/lt tan, mostly mott, fn xln, profus ool, many brittle, sm fr intool por, many gd oolcast por, fw pcs pur chlk, no cup odr, ns.

LS: gry/tan, mott, fn xln, many profus ool, many brittle, fw firm, sm fr intool/oolcast por, sm pur chlk, no cup odr, ns.

LS: gry/lt tan, slight mott, fn xln, sm ool, many dense, sm fr oolcast por in fw, mostly tr-nvp, fw Chert: gry, sharp, no cup odr, ns.

LS: lt tan/lt gry, sing, fn xln, fw foss frags in sm, sm dense, mostly brittle, sub-chlky in prt, tr-nvp, fw pcs pur chlk, no cup odr, ns.

LS: gry/lt tan, sing, fn xln, mostly dense, sm brittle, many flakey/mealy, sub-chlky in prts, tr-nvp, fw pcs pur chlk, fw SH: drk gry, silty, no cup odr, ns.

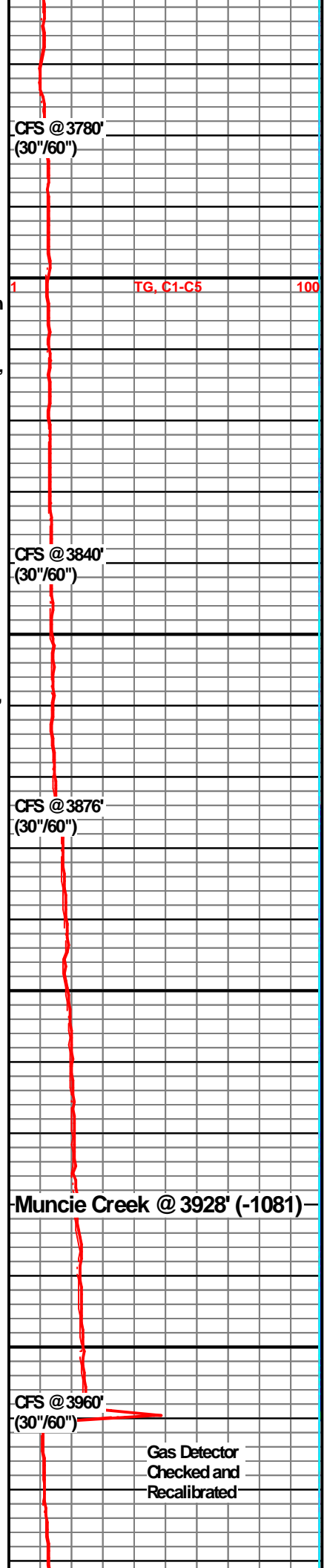
LS: gry/tan, slight mott, fn xln, many foss, sm dense, sm brittle, tr-nvp, svrl SH: drk gry/blk, silty, soft, many carb, no cup odr, ns.

LS: gry/lt brn, mott, fn xln, sm foss in prt, mostly brittle, sm lrg inclus, tr-nvp, sm pur chlk, fw SH: blk, silty, carb, no cup odr, ns.

LS: lt tan/lt gry, mostly sing, micro-fn xln, fw foss frags, mostly dense, chlky, many brittle, tr-nvp, sm Chert: lt gry/wht, foss, sharp, no cup odr, ns.

LS: tan/lt gry, slight mott in prt, fn xln, fw dense, sm brittle, many flakey/mealy, sub-chlky, tr-nvp, fw Chert: wht/opaque, foss, sharp, no cup odr, ns.

LS: tan/gry, mostly sing, fn xln, many dense, fw brittle, sub-chlky in prt, sm flakey like, tr-nvp, fw Chert: gry/wht, sharp, no cup odr, ns.



CFS @ 3780' (30"/60")

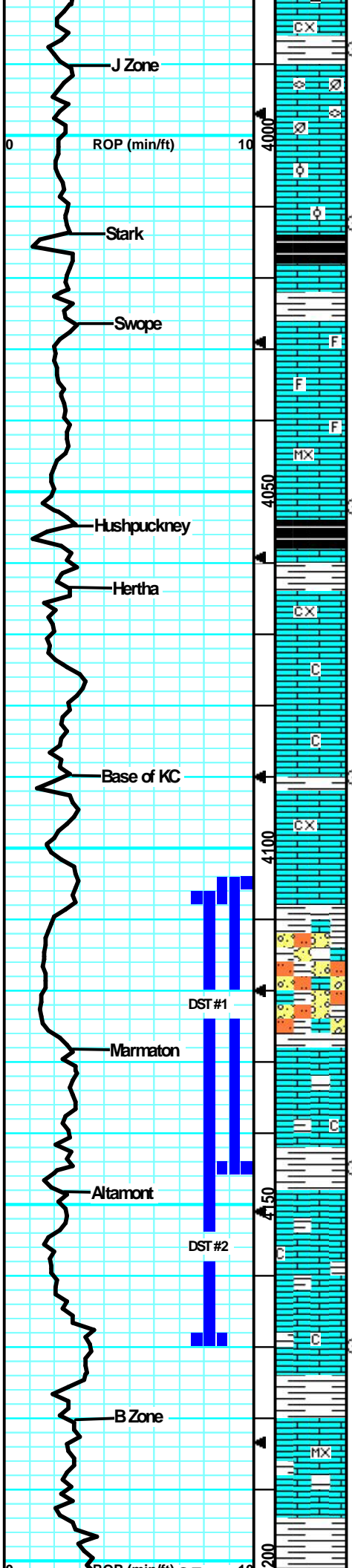
CFS @ 3840' (30"/60")

CFS @ 3876' (30"/60")

Muncie Creek @ 3928' (-1081)

CFS @ 3960' (30"/60")

Gas Detector Checked and Recalibrated



LS: gry/lt brn, mott in prt, fn-crs xln, fw foss, many firm, mostly flakey/mealy, pr intxn por in fw, no cup odr, ns.

LS: gry/tan, slight mott, sm foss fuss/plant frags, sub-chlky, sm dense, tr-nvp, fw SH: gry/drk brn, silty, no cup odr, ns.

LS: lt tan/lt gry, mostly sing, fn xln, fw sub-chlky, sm brittle, fw flakey, tr-nvp, fw pcs pur chl, no cup odr, ns.

LS: tan/lt tan, slight mott in fw, fn xln, fw ool, mostly dense, sm firm, tr-nvp, no cup odr, ns.

LS: gry/tan, mott in prt, fn xln, many foss, mostly flakey/mealy, sm firm, tr-nvp, sm SH: blk, silty, soft, carb, no cup odr, ns.

LS: gry/lt brn, slight mott, fn xln, fw foss, mostly flakey/mealy, fw firm, mostly brittle, tr-nvp, fw SH: gry, silty, med crush, no cup odr, ns.

LS: tan/lt gry, slight mott, fn xln, sm foss in prt, fw flaky/mealy, sub-chlky in prt, tr-nvp, fw pcs pur chl, no cup odr, ns.

LS: lt tan/lt gry, mostly sing, micro-fn xln, mostly dense, sm brittle, tr-? ppt intxn por in fw, 2-3 pcs w/ sm sphr of oil cling to rx chp, faint-wk cup odr, vssfo.

LS: lt tan/lt gry, mostly sing, micro-fn xln, sm dense, mostly chlky/brittle, 3 pcs w/ v sm sphr of oil cling to rx chp like above, faint-? cup odr.

LS: gry/tan, slight mott, fn xln, fw foss frags, mostly flakey/mealy, many brittle, sub-chlky, tr-nvp, sm SH: blk, silty, soft, carb, no cup odr, ns.

LS: gry/lt brn, mostly mott, fn-crs xln, mostly flakey/mealy, many firm/hard, tr-pr tight intxn por in sm, drk brn patchy stns, gd fluor, pos cut resid, svrl pcs w/ ssfo on brk, faint cup odr.

LS: gry/tan, slight mott, fn xln, mostly dense, sub-chlky in prt, tr-nvp, fw pcs pur chl, 2 pcs w/ sho as desc above, no cup odr.

LS: lt gry/lt tan, slight mott in prt, fn xln, many dense, sub-chlky, tr-nvp, fw pcs pur chl, no cup odr, ns.

LS: gry/lt brn, mostly mott, fn-crs xln, dense, hard, many flakey/mealy, tr-nvp, abund SH: gry/drk gry, silty, sm soft, no cup odr, ns.

LS: gry/lt gry, mott in prt, fn xln, many dense, fw brittle, fw sub-chlky, tr-nvp, fw pcs pur chl, fw SH: gry, silty, no cup odr, ns.

LS: gry/tan, slight mott, fn xln, many dense, fw brittle, chlky in prt, tr-nvp, svrl SH: gry/brn, silty, fw SH: gry/drk brn, gritty, frib, no cup odr, ns.

LS: gry/tan, slight mott, fn xln, mostly dense, many brittle, sub-chlky in prt, tr-nvp, fw SH: brn/gry, silty, waxy, fw SH: brn, gritty, friable, soft, no cup odr, ns.

LS: tan/lt gry, sing, fn xln, mostly dense, fw brittle, tr-nvp, 1 pcs w/ fr intxn por, spitted drk brn stns, gd fluor/cut, ssfo, no cup odr.

LS: tan/lt gry, slight mott, fn xln, mostly dense/brittle, pr intxn on edges/fr scat vug por, dul yel fluor, strmcut, ssfo, faint cup odr, 60" Smp: More show pcs fr sfo, fr cup odr.

SH: gry/brn, silty, soft, fw waxy, sm LS: lt tan, sing, fn xln, many brittle, 2 pcs w/ fr intxn por on edge, drk brn stns in por, dul yel fluor, strmcut, vssfo, no cup odr, pos from above.

LS: lt gry/tan, mostly sing, fn xln, mostly dense, sm brittle, fw firm, tr-nvp, abund SH: brn/gm, silty, soft, fw muddy, no cup odr, ns.

LS: gry/lt gry, sing, fn xln, mostly dense, sm firm, fw sub-chlky in prt, tr-nvp, fw pcs w/ lght brn min stns, no fluor/cut, no cup odr, ns.

LS: gry/tan, slight mott, fn xln, many dense, sm firm, fw flakey/mealy, fw sub-chlky, tr-nvp, abund SH: gry/brn, silty, soft, no cup odr, ns.

LS: lt gry/lt tan, sing, fn xln, mostly firm/dense, sub-chlky in prt, tr-nvp, fw pcs pur chl, fw SH: gry, silty, fissile, no cup odr, ns.

LS: lt tan/lt gry, sing, micro-fn xln, mostly dense, brittle, chlky, tr-nvp, fw SH: gry/brn, silty, med crush, no cup odr, ns.

CFS @ 3988' (30"/60")

TG, C1-C5 100

Stark @ 4014' (-1167)

CFS @ 4012' (30"/60")

CFS @ 4052' (30"/60")

Hushpuckney @ 4054' (-1207)

B/KC @ 4090' (-1243)

CFS @ 4090' (30"/60")

DST #1 4104'-4145'
12-10-2015 30/30/30/30
"Marmaton"
1st Blow: 1/2" Blow held steady (No BB)
2nd Blow: No Blow (No BB)
IFP: 22-24# ISIP: 676# FFP.
26-26# FSIP: 553#
HYD: 2021-2014#
Rec: 20' OCM (5% Oil)

Marmaton @ 4128' (-1281)

Small 6.5 Unit Gas Kick.

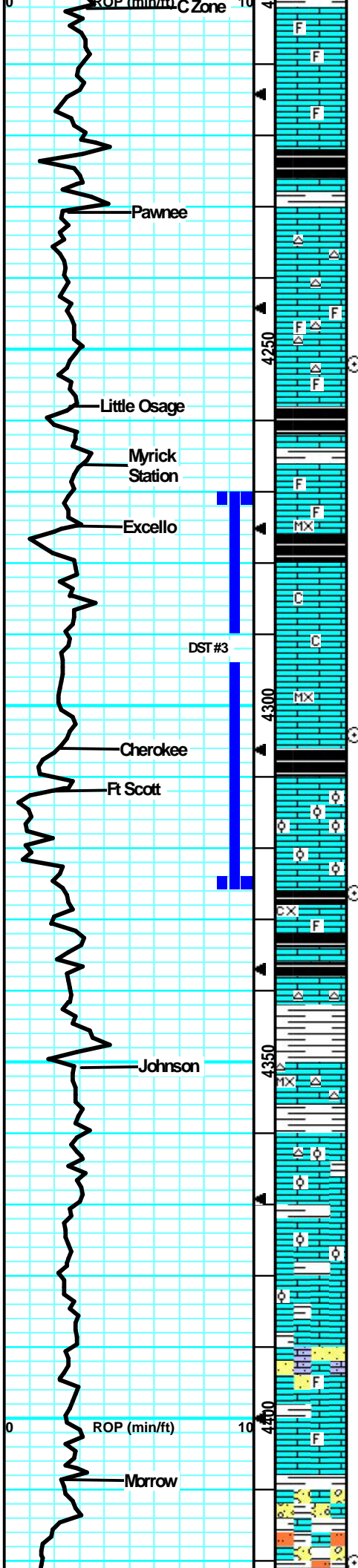
CFS @ 4145' (30"/60") Survey @ 4145' = 1/2 Degree

Altamont @ 4148' (-1301)

Mud Report #6
4145' 12/10/15
Wt Vis pH
9.1 54 10.0
Filt Ch LCM
8.0 2.7K 1#

CFS @ 4170' (30"/60")

DST #2 4106'-4170'
12-10-2015 30/30/30/30
"Altamont" TG, C1-C5 100



LS: tan/gry, sing, fn xln, fw foss frags, mostly dense, many brittle, tr-nvp, sm SH: gry/drk gry, silty, fissile, no cup odr, ns.

LS: tan/gry, slight mott, fn xln, fw foss frags, fw ool, many dense, sm firm, tr-nvp, fw pcs v foss, flakey/mealy, tr-pr inbxdn por, no cup odr, ns.

LS: gry/tan/lt brn, slight mott, fn xln, mostly dense, many firm, tr-nvp, influx SH: blk, silty, soft, carb, no cup odr, ns.

LS: gry/lt tan, sing, fn xln, mostly dense, sm brittle, sub-chlky in prt, tr-nvp, fw pcs pur chl, fw SH: gry/gm, silty, no cup odr, ns.

LS: gry/tan, mostly sing, fn xln, many dense, sm firm, tr-nvp, fw Chert: gry, foss, sharp, fw SH: drk gry, silty, no cup odr, ns.

LS: gry/lt tan, slight mott, fn xln, fw foss frags many dense, tr-nvp, fw Chert: gry, foss, sharp, no cup odr, ns.

LS: gry/lt brn, mott in prt, fn-crs xln, fw firm, many flakey/mealy, tr-? inbxdn por in sm, abund SH: blk, silty, soft, carb, no cup odr, ns.

LS: gry/lt brn, mott, fn-crs xln, fw foss, many flakey/mealy, sm firm, tr-? inbxdn por in sm, fw SH: drk gry, silty, no cup odr, ns.

LS: tan/lt tan, slight mott, micro-fn xln, many dense, sm brittle, chlky in prt, sm v fn ppt inbxdn por, lght brn patchy stns, gd fluor, pos cut resid, fr cup odr, vssfo, sm SH: blk, card, soft.

LS: gry/tan, slight mott, fn xln, fw foss frags, many dense, pr inbxdn por, ppt brn stns, fr cup odr, fw pcs w/ ssfo, svrl SH: drk gry, silty.

LS: gry/tan, slight mott, fn xln, sm dense, flakey/mealy, tr-nvp, no cup odr, ns.

LS: tan/lt tan, slight mott, micro-fn xln, mostly dense, many brittle, chlky in prt, tr-pr ppt inbxdn por in sm, fw dul yel fluor, faint-? cup odr, vssfo in 3-4 pcs.

LS: gry/tan, slight mott, fn xln, mostly dense, sm firm, fw flakey/mealy, tr-nvp, abund SH: blk/gry, silty, soft, sm carb, no cup odr, ns.

LS: gry/lt brn, mott in prt, fn xln, many dense, sm firm, fw flakey/mealy, tr-nvp, svrl SH: gry/blk, silty, sm carb, no cup odr, ns.

LS: tan/lt tan, slight mott, fn xln, fw ool, mostly brittle, chlky in prt, tr-nvp, svrl pcs pur chl, sm SH: gry, silty, no cup odr, ns.

LS: gry/lt brn, mott, fn-crs xln, sm foss, sm firm, many flakey/mealy, tr-? inbxdn por in fw, svrl SH: gry/blk, silty, sm carb, no cup odr, ns.

LS: gry/lt brn, slight mott, fn xln, v fw foss, sm dense, sm firm, fw flakey/mealy, tr-nvp, fw Chert: gry/smokey, foss, sharp, fw SH: gry/blk, silty, fw carb, no cup odr, ns.

LS: gry/tan, slight mott, micro-fn xln, mostly dense, sm firm, 2-3 pcs w/ pr scat vuggy por, drk stns in por, gd fluor, strn cut, vssfo on brk, fw Chert: gry, smokey, sharp, no cup odr.

LS: gry/tan, slight mott, fn xln, many dense, many firm, 3 pcs w/ fr inbxdn por, drk brn sat stns, gd fluor, strn cut, fr sfo, faint-? cup odr.

LS: tan/lt gry, slight mott, fn xln, sm ool, fw brittle, mostly dense, sub-chlky, tr-nvp, svrl pcs pur chl, no cup odr, ns.

LS: tan/lt tan, slight mott in prt, fn xln, v fw ool, many dense, sm brittle, fw firm, chlky in prt, tr-nvp, fw pcs pur chl, no cup odr, ns.

LS: lt tan/lt gry, slight mott, fn xln, many dense, sm brittle, sub-chlky in prt, tr-nvp, fw SH: gry/brn, silty, no cup odr, ns.

LS: tan/lt gry, slight mott, fn xln, many dense, sm firm, fw sub-chlky, sm flakey, tr-nvp, sm SH: gry/brn/gm, silty, no cup odr, ns.

LS: tan/lt gry, slight mott, fn xln, fw foss, mostly dense, sm hard, fw sub-chlky, tr-nvp, fw pcs pur chl, fw SH: gry, silty, no cup odr, ns.

LS: lt brn/lt gry, slight mott, fn xln, mostly dense, many firm/hard, fw flakey like, tr-nvp, v fw SS: v fn gm, arg, dense, hard, tr-nvp, svrl SH: gry/brn/gm, silty, soft, no cup odr, ns.

1st Blow: 1/2" Blowbuilt to 1" (No BB)

2nd Blow: Surface Blow (No BB)

IFP: 22-25# ISIP: 539# FFP:

27-28# FSIP: 461#

HYD: 2052-1995#

Rec: 30' VSOCM (1% Oil)

Hot Shale Kick

Pawnee @ 4231' (-1384)

CFS @ 4252' (30"/60")

Hot Shale Kick

Little Osage @ 4258' (-1411)

Hot Shale Kick

Excello @ 4275' (-1428)

Mud Report #7

4304'	12/11/15	
Wt	Vis	pH
9.2	51	10.5
Flt	Chl	LCM
7.2	3.5K	2#

CFS @ 4304' (30"/60")

Cherokee @ 4306' (-1459)

DST #3 4270'-4326'

12-11-2015 30/30/30/15 "Ft Scott"

1st Blow: Surf Blow built to 3/4" (No BB)

2nd Blow: No Blow (No BB)

IFP: 22-27# ISIP: 1065# FFP:

29-34# FSIP: 788#

HYD: 2155-2050#

Rec: 10' OSM

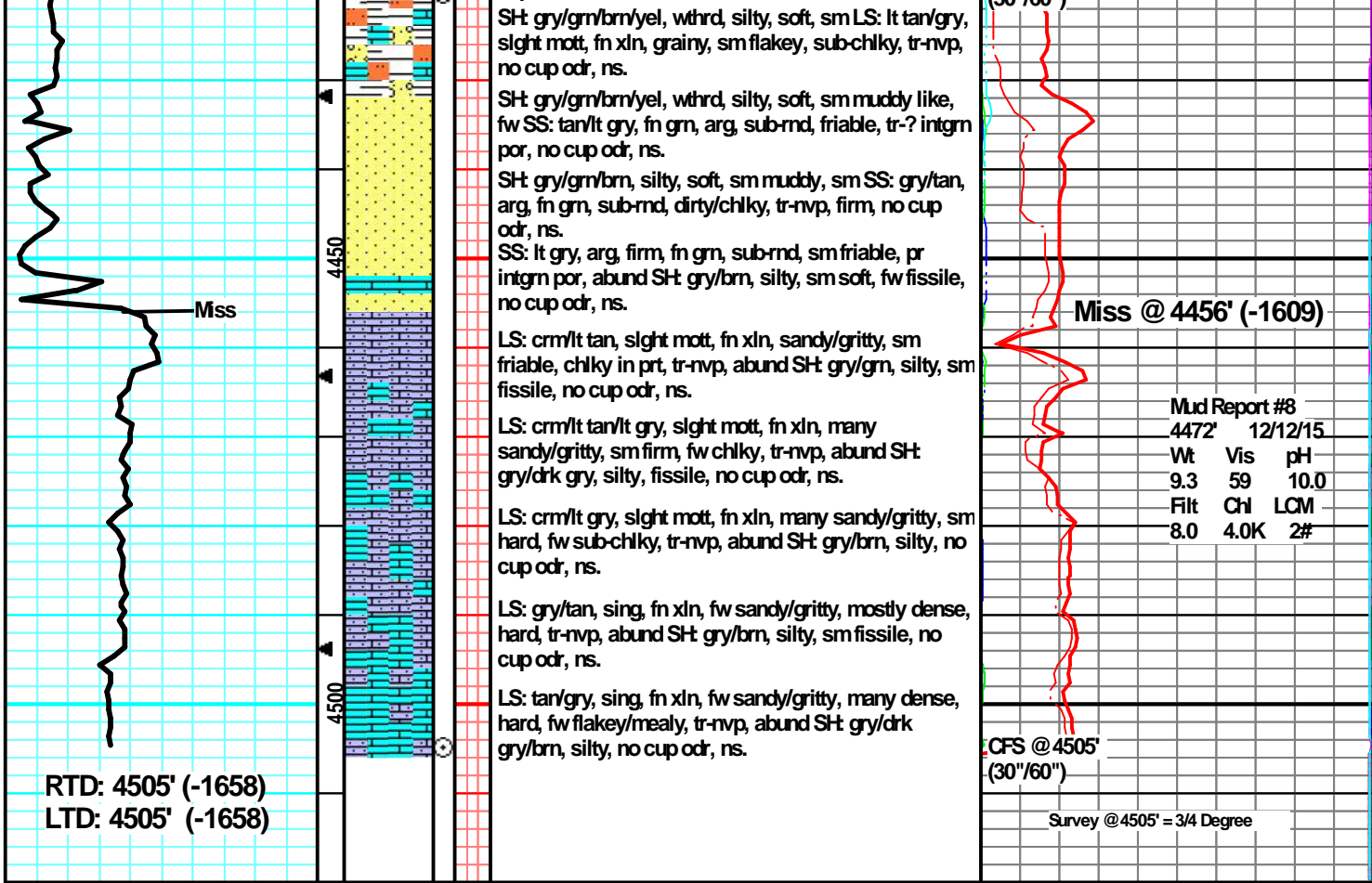
CFS @ 4326' (30"/60")

Johnson @ 4351' (-1504)

TG, C1-C5

Morrow @ 4409' (-1562)

CFS @ 4420' (30"/60")



SH: gry/grn/brn/yel, withrd, silty, soft, sm LS: lt tan/gry, slight mott, fn xln, grainy, sm flakey, sub-chlky, tr-nvp, no cup odr, ns.

SH: gry/grn/brn/yel, withrd, silty, soft, sm muddy like, fw SS: tan/lt gry, fn gn, arg, sub-rnd, friable, tr-? intgrn por, no cup odr, ns.

SH: gry/grn/brn, silty, soft, sm muddy, sm SS: gry/tan, arg, fn gn, sub-rnd, dirty/chlky, tr-nvp, firm, no cup odr, ns.

SS: lt gry, arg, firm, fn gn, sub-rnd, sm friable, pr intgrn por, abund SH: gry/brn, silty, sm soft, fw fissile, no cup odr, ns.

LS: crm/lt tan, slight mott, fn xln, sandy/gritty, sm friable, chlky in prt, tr-nvp, abund SH: gry/grn, silty, sm fissile, no cup odr, ns.

LS: crm/lt tan/lt gry, slight mott, fn xln, many sandy/gritty, sm firm, fw chlky, tr-nvp, abund SH: gry/drk gry, silty, fissile, no cup odr, ns.

LS: crm/lt gry, slight mott, fn xln, many sandy/gritty, sm hard, fw sub-chlky, tr-nvp, abund SH: gry/brn, silty, no cup odr, ns.

LS: gry/tan, sing, fn xln, fw sandy/gritty, mostly dense, hard, tr-nvp, abund SH: gry/brn, silty, sm fissile, no cup odr, ns.

LS: tan/gry, sing, fn xln, fw sandy/gritty, many dense, hard, fw flakey/mealy, tr-nvp, abund SH: gry/drk gry/brn, silty, no cup odr, ns.

Miss @ 4456' (-1609)

Mud Report #8
 4472' 12/12/15

Wt	Vis	pH
9.3	59	10.0
Filt	Chl	LCM
8.0	4.0K	2#

CFS @ 4505'
(30\"/>

Survey @ 4505' = 3/4 Degree

RTD: 4505' (-1658)
 LTD: 4505' (-1658)