

DRILL STEM TEST REPORT

Prepared For: **Charles N Griffin**

PO Box 347
Pratt KS 67124+0347

ATTN: Bruce Reed

Jazmyne #1

34-32S-12W Barber,KS

Start Date: 2016.05.08 @ 21:52:00

End Date: 2016.05.09 @ 03:10:00

Job Ticket #: 65091 DST #: 1

Trilobite Testing, Inc
PO Box 362 Hays, KS 67601
ph: 785-625-4778 fax: 785-625-5620

Printed: 2016.05.12 @ 09:05:17

Charles N Griffin

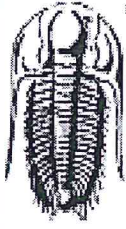
34-32S-12W Barber,KS

Jazmyne #1

DST # 1

Elgin Sand

2016.05.08



**TRILOBITE
TESTING, INC**

DRILL STEM TEST REPORT

Charles N Griffin
PO Box 347
Pratt KS 67124+0347
ATTN: Bruce Reed

34-32S-12W Barber,KS
Jazmyne #1
Job Ticket: 65091 **DST#: 1**
Test Start: 2016.05.08 @ 21:52:00

GENERAL INFORMATION:

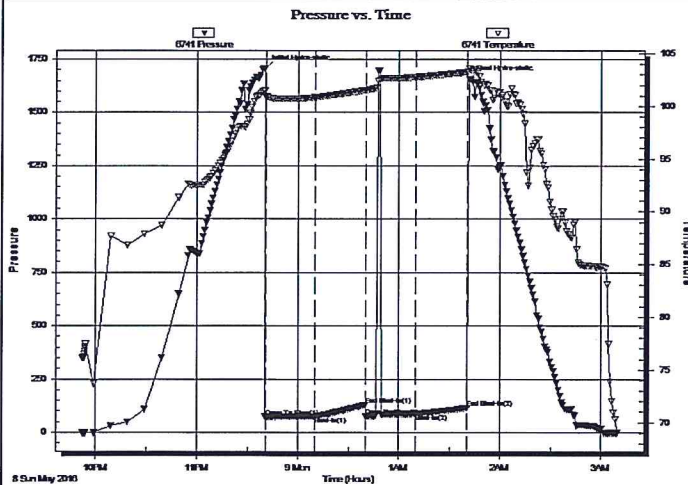
Formation: **Elgin Sand**
Deviated: No Whipstock: ft (KB)
Time Tool Opened: 23:41:00
Time Test Ended: 03:10:00
Test Type: Conventional Bottom Hole (Initial)
Tester: Ken Swinney
Unit No: 72
Interval: **3472.00 ft (KB) To 3600.00 ft (KB) (TVD)**
Reference Elevations: 1594.00 ft (KB)
Total Depth: 3600.00 ft (KB) (TVD) 1589.00 ft (CF)
Hole Diameter: 7.88 inches Hole Condition: Fair KB to GR/CF: 5.00 ft

Serial #: 6741

Inside

Press@RunDepth: 87.02 psig @ 3596.15 ft (KB) Capacity: 8000.00 psig
Start Date: 2016.05.08 End Date: 2016.05.09 Last Calib.: 2016.05.09
Start Time: 21:52:05 End Time: 03:09:59 Time On Btm: 2016.05.08 @ 23:40:00
Time Off Btm: 2016.05.09 @ 01:41:30

TEST COMMENT: IF 30 minutes- Blow built to 1 1/4 inch then died to surface blow
ISI 30 minutes- No blow back
FF 30 minutes-Dead no blow , flush tool no help
FSI 30 minutes- No blow back



PRESSURE SUMMARY

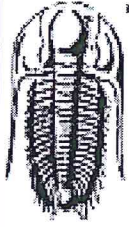
Time (Min.)	Pressure (psig)	Temp (deg F)	Annotation
0	1705.06	101.44	Initial Hydro-static
1	72.29	100.91	Open To Flow (1)
30	75.06	100.84	Shut-In(1)
60	129.11	101.52	End Shut-In(1)
61	75.81	101.50	Open To Flow (2)
90	87.02	102.76	Shut-In(2)
121	114.76	103.24	End Shut-In(2)
122	1657.03	103.58	Final Hydro-static

Recovery

Length (ft)	Description	Volume (bbl)
50.00	Mud 100%	0.25

Gas Rates

Choke (inches)	Pressure (psig)	Gas Rate (Mcf/d)



**TRILOBITE
TESTING, INC**

DRILL STEM TEST REPORT

Charles N Griffin
PO Box 347
Pratt KS 67124+0347
ATTN: Bruce Reed

34-32S-12W Barber,KS
Jazmyne #1
Job Ticket: 65091 **DST#: 1**
Test Start: 2016.05.08 @ 21:52:00

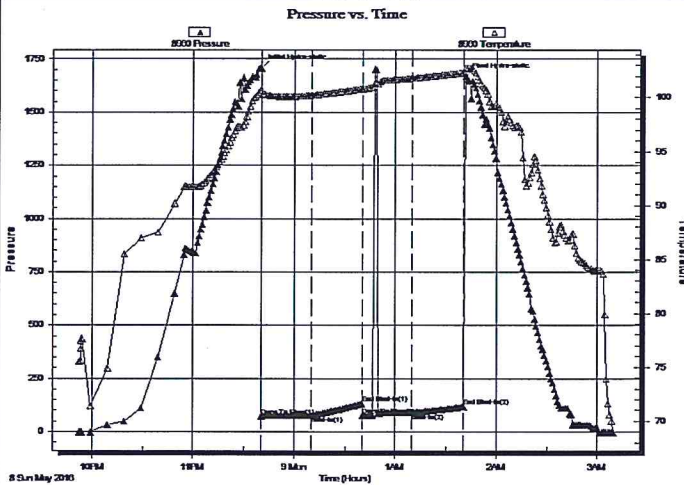
GENERAL INFORMATION:

Formation: **Elgin Sand**
Deviated: No Whipstock: ft (KB) Test Type: Conventional Bottom Hole (Initial)
Time Tool Opened: 23:41:00 Tester: Ken Swinney
Time Test Ended: 03:10:00 Unit No: 72
Interval: **3472.00 ft (KB) To 3600.00 ft (KB) (TVD)** Reference Elevations: 1594.00 ft (KB)
Total Depth: 3600.00 ft (KB) (TVD) 1589.00 ft (CF)
Hole Diameter: 7.88 inches Hole Condition: Fair KB to GR/CF: 5.00 ft

Serial #: 8960

Press@RunDepth: 118.21 psig @ ft (KB) Capacity: 8000.00 psig
Start Date: 2016.05.08 End Date: 2016.05.09 Last Calib.: 2016.05.09
Start Time: 21:52:05 End Time: 03:09:59 Time On Btm: 2016.05.08 @ 23:40:00
Time Off Btm: 2016.05.09 @ 01:41:30

TEST COMMENT: IF 30 minutes- Blow built to 1 1/4 inch then died to surface blow
ISI 30 minutes- No blow back
FF 30 minutes-Dead no blow , flush tool no help
FSI 30 minutes- No blow back



PRESSURE SUMMARY

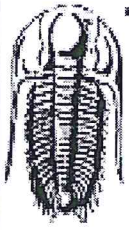
Time (Min.)	Pressure (psig)	Temp (deg F)	Annotation
0	1705.97	100.69	Initial Hydro-static
1	73.61	100.20	Open To Flow (1)
30	77.15	100.20	Shut-In(1)
60	131.83	100.81	End Shut-In(1)
61	77.51	100.79	Open To Flow (2)
90	88.61	101.79	Shut-In(2)
121	118.21	102.32	End Shut-In(2)
122	1667.81	102.77	Final Hydro-static

Recovery

Length (ft)	Description	Volume (bbl)
50.00	Mud 100%	0.25

Gas Rates

Choke (inches)	Pressure (psig)	Gas Rate (Mcf/d)



**TRILOBITE
TESTING, INC**

DRILL STEM TEST REPORT

TOOL DIAGRAM

Charles N Griffin

34-32S-12W Barber,KS

PO Box 347
Pratt KS 67124+0347

Jazmyne #1

Job Ticket: 65091

DST#: 1

ATTN: Bruce Reed

Test Start: 2016.05.08 @ 21:52:00

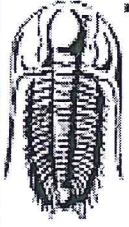
Tool Information

Drill Pipe:	Length: 3332.00 ft	Diameter: 3.80 inches	Volume: 46.74 bbl	Tool Weight: 2000.00 lb
Heavy Wt. Pipe:	Length: 0.00 ft	Diameter: 0.00 inches	Volume: 0.00 bbl	Weight set on Packer: 20000.00 lb
Drill Collar:	Length: 120.00 ft	Diameter: 2.25 inches	Volume: 0.59 bbl	Weight to Pull Loose: 64000.00 lb
			<u>Total Volume: 47.33 bbl</u>	Tool Chased 0.00 ft
Drill Pipe Above KB:	7.00 ft			String Weight: Initial 54000.00 lb
Depth to Top Packer:	3472.00 ft			Final 54000.00 lb
Depth to Bottom Packer:	ft			
Interval between Packers:	128.15 ft			
Tool Length:	155.15 ft			
Number of Packers:	2	Diameter: 6.75 inches		

Tool Comments:

Tool Description	Length (ft)	Serial No.	Position	Depth (ft)	Accum. Lengths
Shut-In Tool	5.00			3450.00	
Hydraulic tool	5.00			3455.00	
Jars	5.00			3460.00	
Safety Joint	2.00			3462.00	
Top Packer	5.00			3467.00	
Packer	5.00			3472.00	27.00 Bottom Of Top Packer
Change Over Sub	1.00			3473.00	
Drill Pipe	94.15			3567.15	
Change Over Sub	1.00			3568.15	
Perforations	27.00			3595.15	
Recorder	1.00	6741	Inside	3596.15	
Recorder	1.00	8521	Outside	3597.15	
Bullnose	3.00			3600.15	128.15 Anchor Tool

Total Tool Length: 155.15



**TRILOBITE
TESTING, INC**

DRILL STEM TEST REPORT

FLUID SUMMARY

Charles N Griffin

34-32S-12W Barber,KS

PO Box 347
Pratt KS 67124+0347

Jazmyne #1

Job Ticket: 65091

DST#: 1

ATTN: Bruce Reed

Test Start: 2016.05.08 @ 21:52:00

Mud and Cushion Information

Mud Type: Gel Chem	Cushion Type:	Oil API:	deg API
Mud Weight: 9.00 lb/gal	Cushion Length: ft	Water Salinity:	ppm
Viscosity: 46.00 sec/qt	Cushion Volume: bbl		
Water Loss: 8.78 in ³	Gas Cushion Type:		
Resistivity: ohm.m	Gas Cushion Pressure: psig		
Salinity: 3000.00 ppm			
Filter Cake: 1.00 inches			

Recovery Information

Recovery Table

Length ft	Description	Volume bbl
50.00	Mud 100%	0.246

Total Length: 50.00 ft Total Volume: 0.246 bbl

Num Fluid Samples: 0

Num Gas Bombs: 0

Serial #:

Laboratory Name:

Laboratory Location:

Recovery Comments:

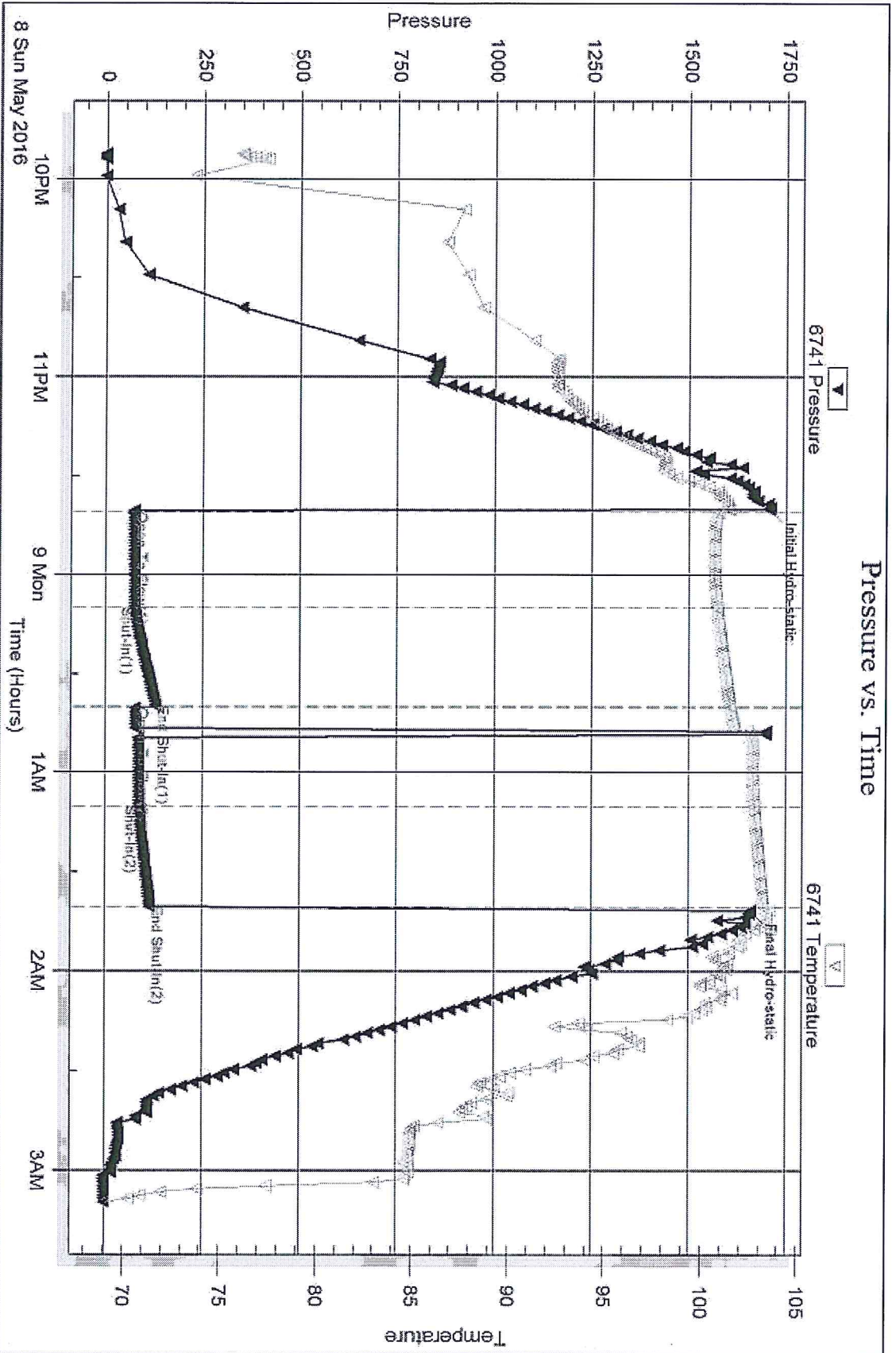
Serial #: 6741

Inside

Charles N Griffin

Jazmyne #1

DST Test Number: 1



Serial #: 8960

Charles N Griffin

Jazmyne #1

DST Test Number: 1

