



TEMPORARY ABANDONMENT WELL APPLICATION

All blanks must be complete

OPERATOR: License# _____
 Name: _____
 Address 1: _____
 Address 2: _____
 City: _____ State: _____ Zip: _____ + _____
 Contact Person: _____
 Phone: (_____) _____
 Contact Person Email: _____
 Field Contact Person: _____
 Field Contact Person Phone: (_____) _____

API No. 15- _____
 Spot Description: _____
 _____ - _____ - _____ - _____ Sec. _____ Twp. _____ S. R. _____ E W
 _____ feet from N / S Line of Section
 _____ feet from E / W Line of Section
 GPS Location: Lat: _____, Long: _____
(e.g. xx.xxxxx) (e.g. -xxx.xxxxx)
 Datum: NAD27 NAD83 WGS84
 County: _____ Elevation: _____ GL KB
 Lease Name: _____ Well #: _____
 Well Type: (check one) Oil Gas OG WSW Other: _____
 SWD Permit #: _____ ENHR Permit #: _____
 Gas Storage Permit #: _____
 Spud Date: _____ Date Shut-In: _____

| | Conductor | Surface | Production | Intermediate | Liner | Tubing |
|------------------|-----------|---------|------------|--------------|-------|--------|
| Size | | | | | | |
| Setting Depth | | | | | | |
| Amount of Cement | | | | | | |
| Top of Cement | | | | | | |
| Bottom of Cement | | | | | | |

Casing Fluid Level from Surface: _____ How Determined? _____ Date: _____
 Casing Squeeze(s): _____ to _____ w / _____ sacks of cement, _____ to _____ w / _____ sacks of cement. Date: _____
(top) (bottom) (top) (bottom)
 Do you have a valid Oil & Gas Lease? Yes No
 Depth and Type: Junk in Hole at _____ Tools in Hole at _____ Casing Leaks: Yes No Depth of casing leak(s): _____
(depth) (depth)
 Type Completion: ALT. I ALT. II Depth of: DV Tool: _____ w / _____ sacks of cement Port Collar: _____ w / _____ sack of cement
(depth) (depth)
 Packer Type: _____ Size: _____ Inch Set at: _____ Feet
 Total Depth: _____ Plug Back Depth: _____ Plug Back Method: _____

Geological Data:

| Formation Name | Formation Top | Formation Base | Completion Information |
|----------------|---------------|----------------|--|
| 1. _____ | At: _____ | to _____ Feet | Perforation Interval _____ to _____ Feet or Open Hole Interval _____ to _____ Feet |
| 2. _____ | At: _____ | to _____ Feet | Perforation Interval _____ to _____ Feet or Open Hole Interval _____ to _____ Feet |

UNDER PENALTY OF PERJURY I HEREBY ATTEST THAT THE INFORMATION CONTAINED HEREIN IS TRUE AND CORRECT TO THE BEST OF MY KNOWLEDGE

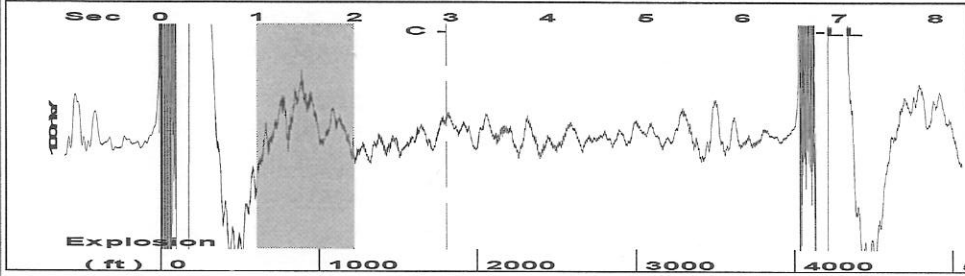
Submitted Electronically

| | | | | | |
|---|--|----------------|---------------------|----------------------|---------------------------------|
| Do NOT Write in This Space - KCC USE ONLY | Date Tested: _____ | Results: _____ | Date Plugged: _____ | Date Repaired: _____ | Date Put Back in Service: _____ |
| | Review Completed by: _____ Comments: _____ | | | | |
| TA Approved: <input type="checkbox"/> Yes <input type="checkbox"/> Denied Date: _____ | | | | | |

Mail to the Appropriate KCC Conservation Office:

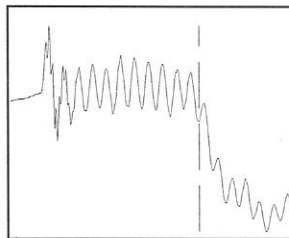
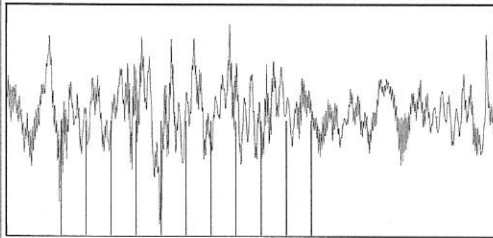
| | | |
|--|---|--------------------|
| | KCC District Office #1 - 210 E. Frontview, Suite A, Dodge City, KS 67801 | Phone 620.225.8888 |
| | KCC District Office #2 / UPGS - 3450 N. Rock Road, Building 600, Suite 601, Wichita, KS 67226 | Phone 316.630.4000 |
| | KCC District Office #3 - 1500 SW Seventh Steet, Chanute, KS 66720 | Phone 620.432.2300 |
| | KCC District Office #4 - 2301 E. 13th Street, Hays, KS 67601-2651 | Phone 785.625.0550 |

Group: Pratt Well Service, Inc Well: Daylight # 2 (acquired on: 06/07/16 16:24:46)



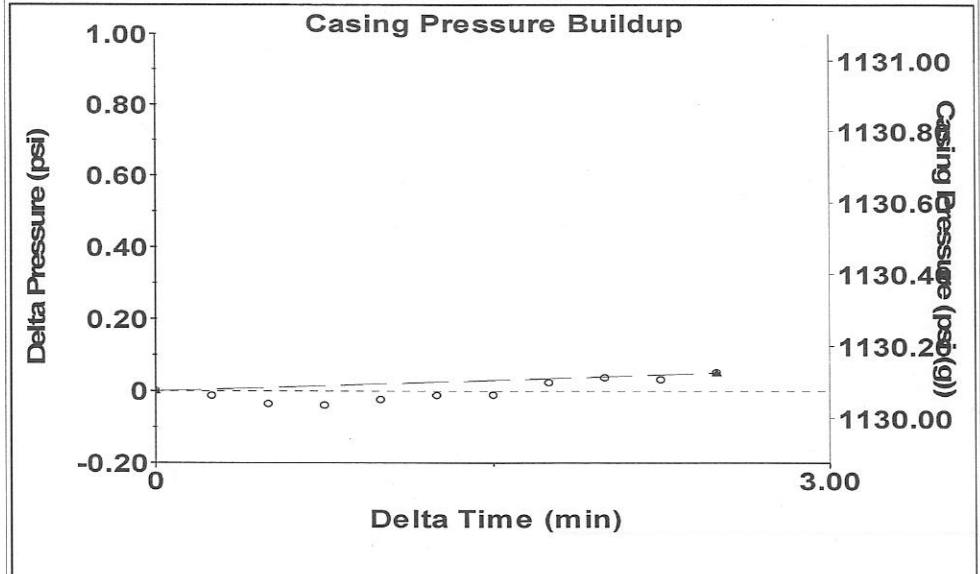
Filter Type High Pass Automatic Collar Count Yes Time 6.745 sec
 Manual Acoustic Velo 1235.87 ft/s Manual JTS/sec 19.4932 Joints 130.284 Jts
 Depth 4130.01 ft

[1.0 to 2.0 (Sec)]



Analysis Method: Automatic

Group: Pratt Well Service, Inc Well: Daylight # 2 (acquired on: 06/07/16 16:24:46)



Change in Pressure 0.05 psi PT15469
 Change in Time 2.50 min Range 0-? psi

Group: Pratt Well Service, Inc Well: Daylight # 2 (acquired on: 06/07/16 16:24:46)

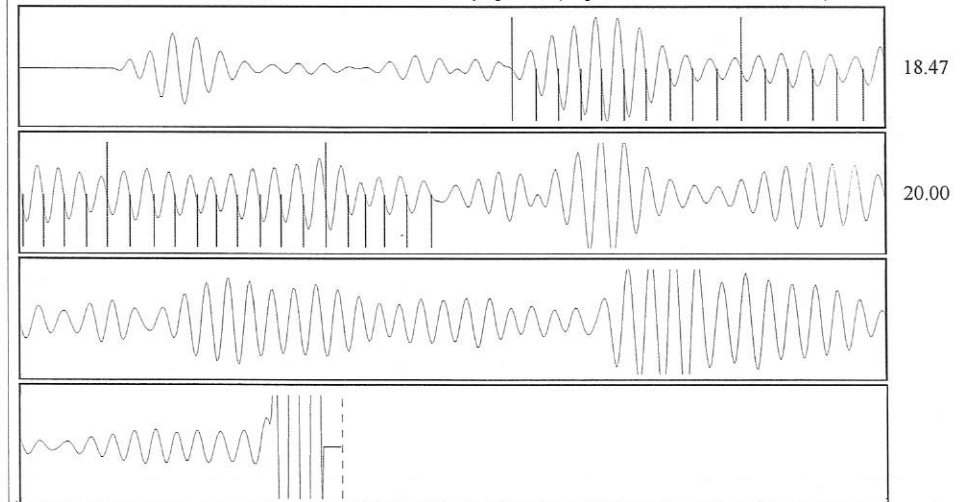
| | | | |
|-----------------------|--------------|-------------------------------|-----------------|
| Production | Potential | Casing Pressure | Producing |
| Current | | 1130.1 psi (g) | |
| Oil -*- BBL/D | | Casing Pressure Buildup | |
| Water -*- BBL/D | | 0.050 psi | |
| Gas -*- Mscf/D | | 2.50 min | |
| | | Gas/Liquid Interface Pressure | Casing % Liquid |
| | | 1268.6 psi (g) | 98 % |
| IPR Method | Vogel | Liquid Level Depth | |
| PBHP/SBHP | -*- | 4130.01 ft | |
| Production Efficiency | 0.0 | Tubing Intake Depth | |
| | | -*- ft | |
| Oil 40 deg.API | | Formation Depth | |
| Water 1.05 Sp.Gr.H2O | | 4190.00 ft | |
| Gas 0.69 Sp.Gr.AIR | | | |
| Acoustic Velocity | 1224.61 ft/s | | |
| | | Tubing Intake | |
| | | -*- psi (g) | |
| | | Producing BHP | |
| | | 1295.4 psi (g) | |
| | | Static BHP | |
| | | -*- psi (g) | |

Formation Submergence
 Total Gaseous Liquid Column HT (TVD) 60 ft
 Equivalent Gas Free Liquid HT (TVD) 59 ft

Acoustic Test



Group: Pratt Well Service, Inc Well: Daylight # 2 (acquired on: 06/07/16 16:24:46)



| | | | |
|------------------------|-----------------|------------------------|---------|
| Acoustic Velocity | 1224.61 ft/s | Joints counted | 35 |
| Joints Per Second | 19.3157 jts/sec | Joints to liquid level | 130.284 |
| Depth to liquid level | 4130.01 ft | Filter Width | 17.4932 |
| Automatic Collar Count | Yes | Time to 1st Collar | 1.14 |

Conservation Division
District Office No. 1
210 E. Frontview, Suite A
Dodge City, KS 67801



Phone: 620-225-8888
Fax: 620-225-8885
<http://kcc.ks.gov/>

Jay Scott Emler, Chairman
Shari Feist Albrecht, Commissioner
Pat Apple, Commissioner

Sam Brownback, Governor

June 14, 2016

Kenneth C Gates
Pratt Well Service, Inc.
PO BOX 847
PRATT, KS 67124-0847

Re: Temporary Abandonment
API 15-097-21209-00-00
DAYLIGHT 2
NE/4 Sec.09-28S-16W
Kiowa County, Kansas

Dear Kenneth C Gates:

"Your temporary abandonment (TA) application for the well listed above has been approved. In accordance with K.A.R. 82-3-111 the TA status of this well will expire 06/14/2017.

- * If you return this well to service or plug it, please notify the District Office.
- * If you sell this well you are required to file a Transfer of Operator form, T-1.
- * If the well will remain temporarily abandoned, you must submit a new TA application, CP-111, before 06/14/2017.

You may contact me at the number above if you have questions.

Very truly yours,

Michael Maier"