



TEMPORARY ABANDONMENT WELL APPLICATION

OPERATOR: License# _____
 Name: _____
 Address 1: _____
 Address 2: _____
 City: _____ State: _____ Zip: _____ + _____
 Contact Person: _____
 Phone: (____) _____
 Contact Person Email: _____
 Field Contact Person: _____
 Field Contact Person Phone: (____) _____

API No. 15- _____
 Spot Description: _____
 _____ - _____ - _____ - _____ Sec. _____ Twp. _____ S. R. _____ E W
 _____ feet from N / S Line of Section
 _____ feet from E / W Line of Section
 GPS Location: Lat: _____, Long: _____
(e.g. xx.xxxxx) (e.g. -xxx.xxxxx)
 Datum: NAD27 NAD83 WGS84
 County: _____ Elevation: _____ GL KB
 Lease Name: _____ Well #: _____
 Well Type: (check one) Oil Gas OG WSW Other: _____
 SWD Permit #: _____ ENHR Permit #: _____
 Gas Storage Permit #: _____
 Spud Date: _____ Date Shut-In: _____

	Conductor	Surface	Production	Intermediate	Liner	Tubing
Size						
Setting Depth						
Amount of Cement						
Top of Cement						
Bottom of Cement						

Casing Fluid Level from Surface: _____ How Determined? _____ Date: _____

Casing Squeeze(s): _____ to _____ w / _____ sacks of cement, _____ to _____ w / _____ sacks of cement. Date: _____
(top) (bottom) (top) (bottom)

Do you have a valid Oil & Gas Lease? Yes No

Depth and Type: Junk in Hole at _____ Tools in Hole at _____ Casing Leaks: Yes No Depth of casing leak(s): _____
(depth) (depth)

Type Completion: ALT. I ALT. II Depth of: DV Tool: _____ w / _____ sacks of cement Port Collar: _____ w / _____ sack of cement
(depth) (depth)

Packer Type: _____ Size: _____ Inch Set at: _____ Feet

Total Depth: _____ Plug Back Depth: _____ Plug Back Method: _____

Geological Data:

Formation Name	Formation Top	Formation Base	Completion Information
1. _____	At: _____	to _____ Feet	Perforation Interval _____ to _____ Feet or Open Hole Interval _____ to _____ Feet
2. _____	At: _____	to _____ Feet	Perforation Interval _____ to _____ Feet or Open Hole Interval _____ to _____ Feet

~~UNDER PENALTY OF PERJURY I HEREBY ATTEST THAT THE INFORMATION CONTAINED HEREIN IS TRUE AND CORRECT TO THE BEST OF MY KNOWLEDGE~~

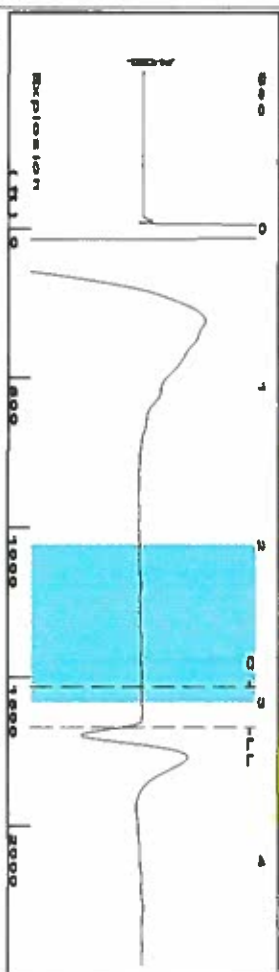
Submitted Electronically

Do NOT Write in This Space - KCC USE ONLY	Date Tested: _____	Results: _____	Date Plugged: _____	Date Repaired: _____	Date Put Back in Service: _____
	Review Completed by: _____ Comments: _____				
TA Approved: <input type="checkbox"/> Yes <input type="checkbox"/> Denied Date: _____					

Mail to the Appropriate KCC Conservation Office:

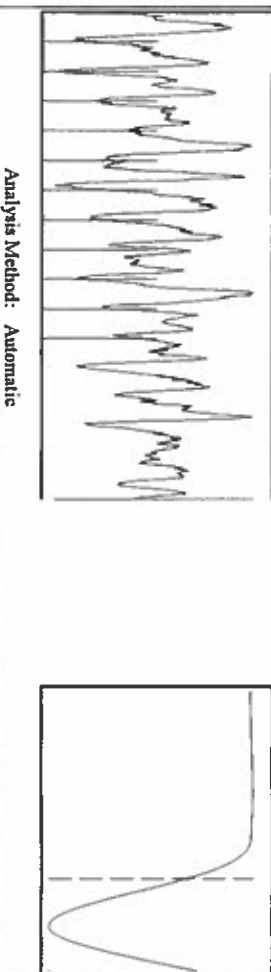
	KCC District Office #1 - 210 E. Frontview, Suite A, Dodge City, KS 67801	Phone 620.225.8888
	KCC District Office #2 / UPGS - 3450 N. Rock Road, Building 600, Suite 601, Wichita, KS 67226	Phone 316.630.4000
	KCC District Office #3 - 1500 SW Seventh Steet, Chanute, KS 66720	Phone 620.432.2300
	KCC District Office #4 - 2301 E. 13th Street, Hays, KS 67601-2651	Phone 785.625.0550

Group: Oxy Usa Ulysses Wells Well: Fletcher A-3 (acquired on: 07/14/16 13:14:26)



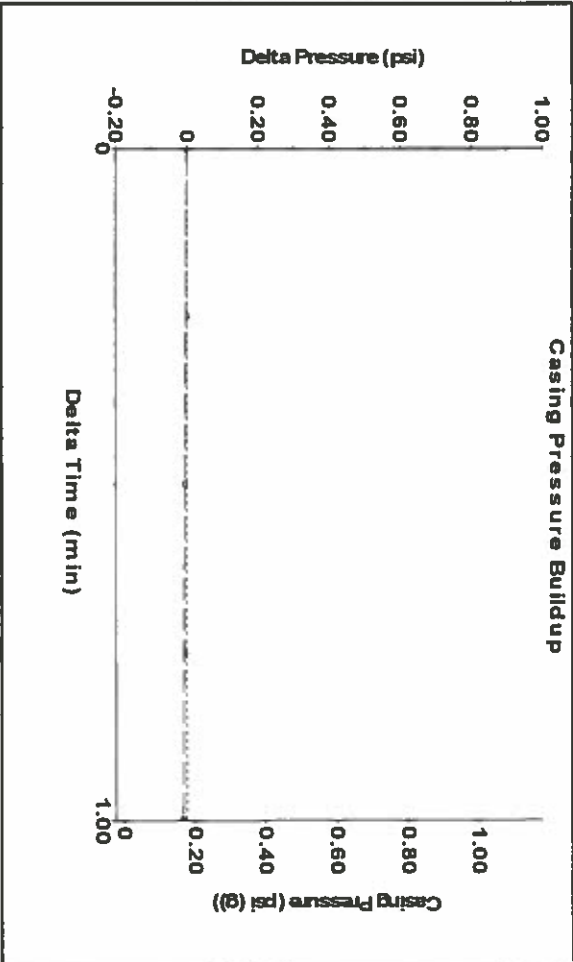
Filter Type High Pass Automatic Collar Count Yes
 Manual Acoustic Velo:1039.34 ft/s Manual JTS/Sec 16.3934
 Time 3.152 sec
 Joints 52.6131 Jts
 Depth 1667.83 ft

[2.0 to 3.0 (Sec)]



Analysis Method: Automatic

Group: Oxy Usa Ulysses Wells Well: Fletcher A-3 (acquired on: 07/14/16 13:14:26)



Change in Pressure -0.01 psi PT8197
 Change in Time 1.00 min Range 0 - 7 psi

Group: Oxy Usa Ulysses Wells Well: Fletcher A-3 (acquired on: 07/14/16 13:14:26)

Production	Potential	Casing Pressure	Producing
Oil -*-	BBL/D	0.2 psi (g)	Annular Gas Flow 0 McscFD
Water -*-	BBL/D	Casing Pressure Buildup -0.010 psi	% Liquid 100 %
Gas -*-	McscFD	1.00 min	Liquid Stream Below Tubing Oil 0 %
IPR Method Vogel		Gas/Liquid Interface Pressure 1.0 psi (g)	Water 100 %
PBHP/SBHP -*-			Liquid Below Tubing 100 %
Production Efficiency 0.0			Pump Intake 792.2 psi (g)
			Producing BHP 805.4 psi (g)
			Static BHP -*- psi (g)

Liquid Level Depth 1667.83 ft
 Pump Intake Depth 4051.00 ft
 Formation Depth 4080.00 ft
 Acoustic Velocity 1058.27 ft/s

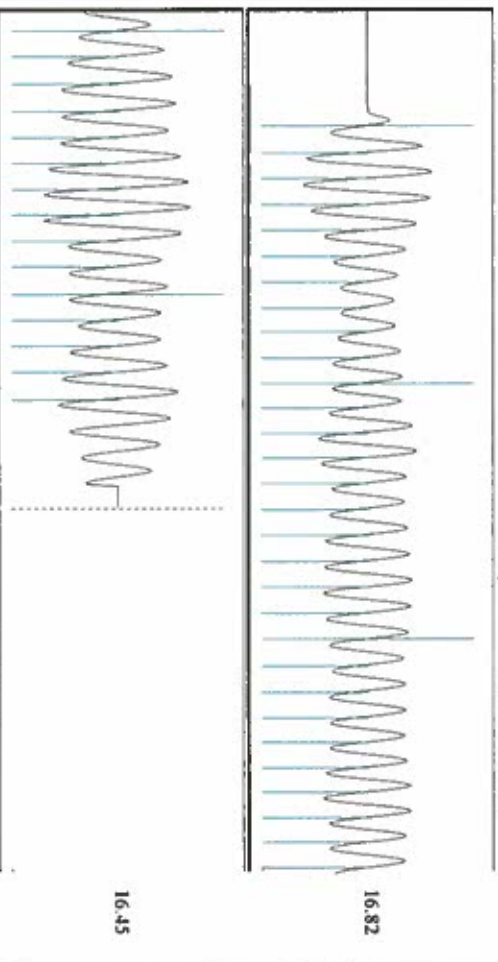
Formation Submergence 2383 ft
 Total Gaseous Liquid Column HT (TVD) 2383 ft
 Equivalent Gas Free Liquid HT (TVD)

Acoustic Test
 Saul Hernandez-Tech



Casing Pressure Buildup

Group: Oxy Usa Ulysses Wells Well: Fletcher A-3 (acquired on: 07/14/16 13:14:26)



Acoustic Velocity 1058.27 ft/s
 Joints Per Second 16.692 Jts/Sec
 Depth to liquid level 1667.83 ft
 Automatic Collar Count Yes

Joints counted 44
 Joints to liquid level 52.6131
 Filter Width 14.3934
 Time to 1st Collar 0.264

Conservation Division
District Office No. 1
210 E. Frontview, Suite A
Dodge City, KS 67801



Phone: 620-225-8888
Fax: 620-225-8885
<http://kcc.ks.gov/>

Jay Scott Emler, Chairman
Shari Feist Albrecht, Commissioner
Pat Apple, Commissioner

Sam Brownback, Governor

July 19, 2016

Katheirne McClurkan
Merit Energy Company, LLC
13727 Noel Road, Suite 1200
Dallas, TX 75240

Re: Temporary Abandonment
API 15-081-00014-00-03
Fletcher A 3
NW/4 Sec.04-28S-34W
Haskell County, Kansas

Dear Katheirne McClurkan:

"Your temporary abandonment (TA) application for the well listed above has been approved. In accordance with K.A.R. 82-3-111 the TA status of this well will expire 07/19/2017.

- * If you return this well to service or plug it, please notify the District Office.
- * If you sell this well you are required to file a Transfer of Operator form, T-1.
- * If the well will remain temporarily abandoned, you must submit a new TA application, CP-111, before 07/19/2017.

You may contact me at the number above if you have questions.

Very truly yours,

Michael Maier"