

L.D. DRILLING, INC.
CAUTION LEASE
SW. 1/4, SECTION 27, T16S, R32W
SCOTT COUNTY, KANSAS

Directions:

From the intersection of Highway 96 and Highway 83 (in Scott City Kansas) go 8.0 miles North on Highway 83 to the intersection of Highway 83 and Highway 4, then go 2.0 miles East on Highway 4, then go 1.0 miles North, then go 1.0 miles East, then go 1.0 miles North to the SW. corner of Section 27, then go 0.22 miles North to a flag in a n-s cropline, then go 0.20 miles East to location.

FIELD ENTRANCE

GRAVEL ROAD (E. RD. 260)

Notes:

1. Set (3) wood stakes at location site.
2. All flagging Red & Yellow.
3. Overhead power available at E. line and E. 1/2 of N. line, Sec. 27.
4. Kansas One Call System Inc. should be notified before excavation (1-800-344-7233).
5. CAUTION; Various pipelines in Sec. 27.
6. Contact landowner for best access and as to location of wood stakes in wheat.
7. Drillsite location fell relatively flat with very little grade break.

27

Drillsite Location
Cauthon Trust #1-27
1198'FSL 1082'FWL
Ground Elevation = 2985
Y = 723831 X = 1329104
 State Plane-NAD 27-Kansas South
 (Mapping Grade GPS Used)
Latitude 38.631328
Longitude -100.848993
 WGS 84-NAD 83

* Ingress and egress to location as shown on this plat is for usage only and may not be legally opened for public use. Contact landowner, tenant and county road department for access.

FLAGGED CROPLINE OPPOSITE LOCATION

WHEAT

ROAD (N. OSAGE RD.)

NO

DIRT TRAIL

FENCE POST

NO

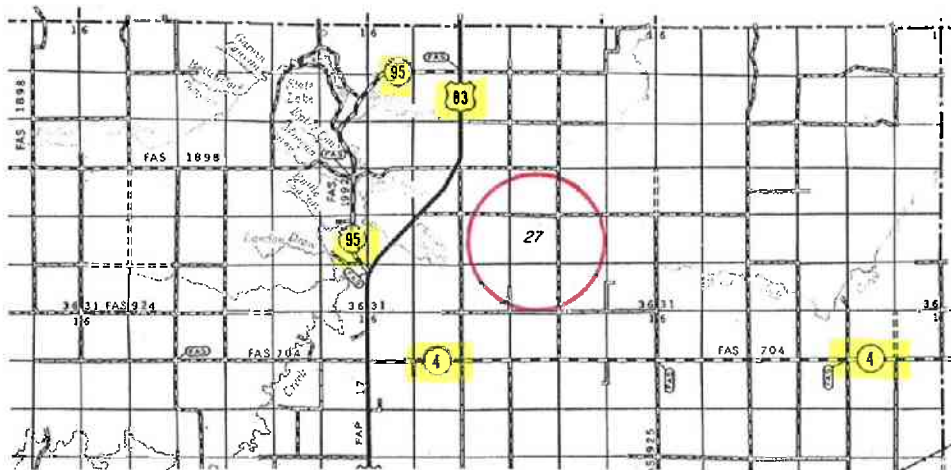
ROAD

(E. RD. 250)

ROAD (N. PAWNEE RD.)

DIRT

SCALE 1" = 1000'



* Controlling data is based upon the best maps and photographs available to us and upon a regular section of land containing 640 acres.
 * Approximate section lines were determined using the normal standard of care of oilfield surveyors practicing in the state of Kansas. The section corners, which establish the precise section lines, were not necessarily located, and the exact location of the drillsite location in the section is not guaranteed. Therefore, the operator securing this service and accepting this plat and all other parties relying thereon agree to hold Central Kansas Oilfield Services, Inc., its officers and employees harmless from all losses, costs and expenses and said entities released from any liability from incidental or consequential damages.
 * Elevations derived from National Geodetic Vertical Datum.

Date May 26, 2016