



## DRILL STEM TEST REPORT

Prepared For: **Shelby Resources LLC.**

2717 Canel Blvd. Suite C  
Hays Kansas 67601

ATTN: Chris Gottschalk

**10/22S/16W Pawnee**

**Buster #1-10**

Start Date: 2011.02.05 @ 10:38:00

End Date: 2011.02.05 @ 00:00:00

Job Ticket #: 15652                      DST #: 3

Superior Testers Enterprises LLC  
PO Box 138 Great Bend KS 67530  
1-800-792-6902

Printed: 2011.02.05 @ 20:14:00

Shelby Resources LLC.      Buster #1-10      10/22S/16W Pawnee      DST # 3      Viola      2011.02.05









# DRILL STEM TEST REPORT

**TOOL DIAGRAM**

Shelby Resources LLC.  
 2717 Canel Blvd. Suite C  
 Hays Kansas 67601  
 ATTN: Chris Gottschalk

**Buster #1-10**  
**10/22S/16W Pawnee**  
 Job Ticket: 15652      **DST#: 3**  
 Test Start: 2011.02.05 @ 10:38:00

**Tool Information**

Drill Pipe:	Length: 3660.00 ft	Diameter: 3.80 inches	Volume: 51.34 bbl	Tool Weight: 2000.00 lb
Heavy Wt. Pipe:	Length: 0.00 ft	Diameter: 0.00 inches	Volume: 0.00 bbl	Weight set on Packer: 25000.00 lb
Drill Collar:	Length: 259.05 ft	Diameter: 2.25 inches	Volume: 1.27 bbl	Weight to Pull Loose: 63000.00 lb
		Total Volume: 52.61 bbl		Tool Chased 0.00 ft
Drill Pipe Above KB:	25.05 ft			String Weight: Initial 78000.00 lb
Depth to Top Packer:	3922.00 ft			Final 82000.00 lb
Depth to Bottom Packer:	3951.30 ft			
Interval between Packers:	29.30 ft			
Tool Length:	237.72 ft			
Number of Packers:	3	Diameter: 6.75 inches		

Tool Comments: We slid to bottom round 15 feet. We had to set the tool 4 times to get it to hit bottom and stay. When we came up we pulled 145,000 on it 2 different times. Also when we came off bottom we also pulled around 150,000 on it.

Tool Description	Length (ft)	Serial No.	Position	Depth (ft)	Accum. Lengths
Shut-In Tool	5.00			3899.00	
Hydraulic Tool	5.00			3904.00	
Jars	6.00			3910.00	
Safety Joint	2.00			3912.00	
Packer	5.00			3917.00	28.00      Bottom Of Top Packer
Packer	5.00			3922.00	
ASE Carrier	5.00			3927.00	
Perforations	21.00			3948.00	
Recorder	0.00	8405	Inside	3948.00	
Recorder	0.00	8400	Outside	3948.00	
Blank Off Sub	0.75			3948.75	
T.C.	2.55			3951.30	29.30      Tool Interval
Packer	3.24			3954.54	
Change Over Sub	0.75			3955.29	
Drill Pipe	159.68			4114.97	
Change Over Sub	0.75			4115.72	
Perforations	13.00			4128.72	
Recorder	0.00	8525	Inside	4128.72	
Bull plug	3.00			4131.72	180.42      Bottom Packers & Anchor

**Total Tool Length: 237.72**



# DRILL STEM TEST REPORT

## FLUID SUMMARY

Shelby Resources LLC.  
 2717 Canel Blvd. Suite C  
 Hays Kansas 67601  
 ATTN: Chris Gottschalk

**Buster #1-10**  
**10/22S/16W Pawnee**  
 Job Ticket: 15652      **DST#: 3**  
 Test Start: 2011.02.05 @ 10:38:00

### Mud and Cushion Information

Mud Type: Gel Chem	Cushion Type:	Oil API:	deg API
Mud Weight: 9.00 lb/gal	Cushion Length: ft	Water Salinity:	ppm
Viscosity: 43.00 sec/qt	Cushion Volume: bbl		
Water Loss: 11.20 in <sup>3</sup>	Gas Cushion Type:		
Resistivity: ohm.m	Gas Cushion Pressure: psia		
Salinity: 4500.00 ppm			
Filter Cake: 1.00 inches			

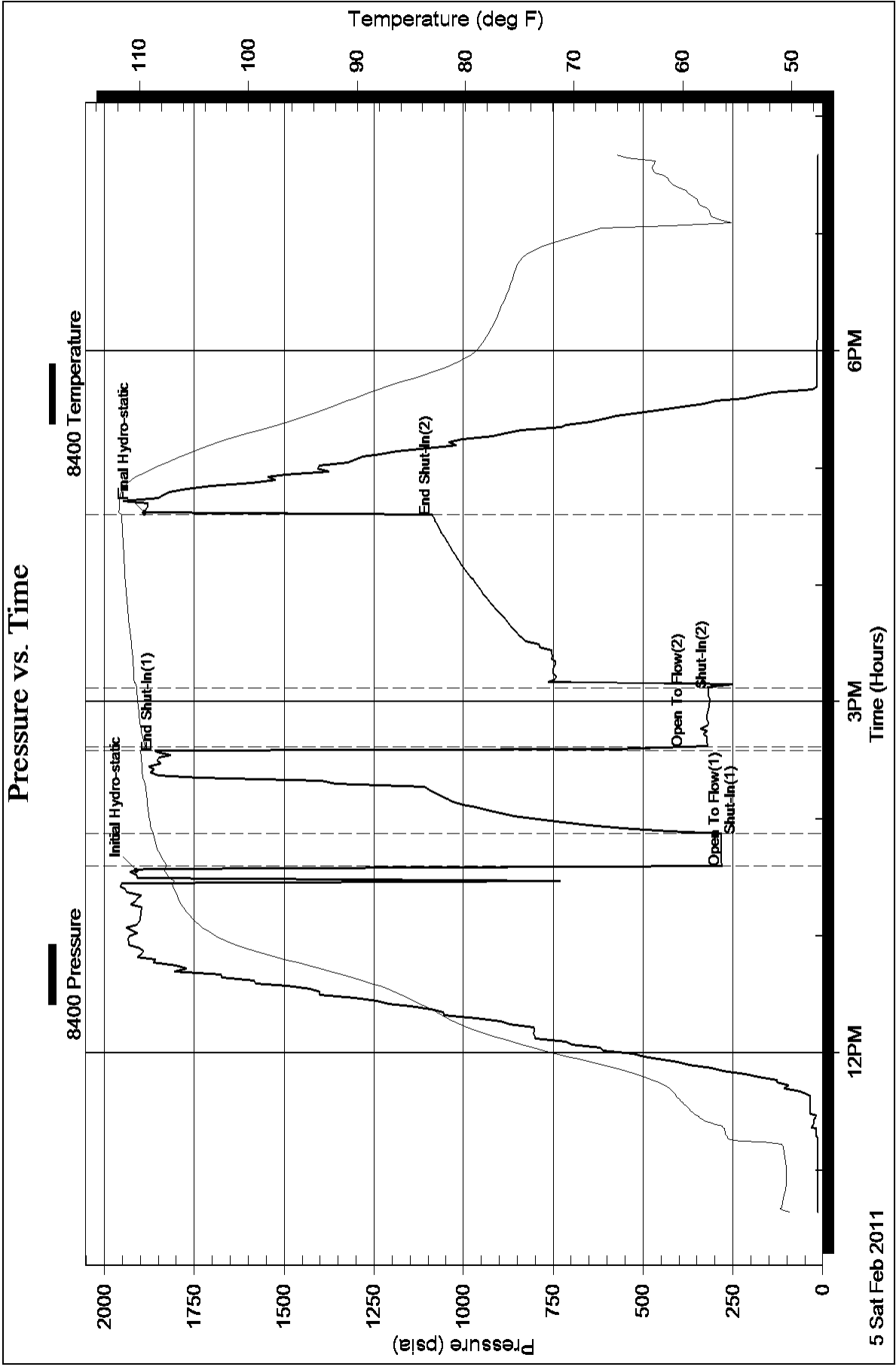
### Recovery Information

Recovery Table

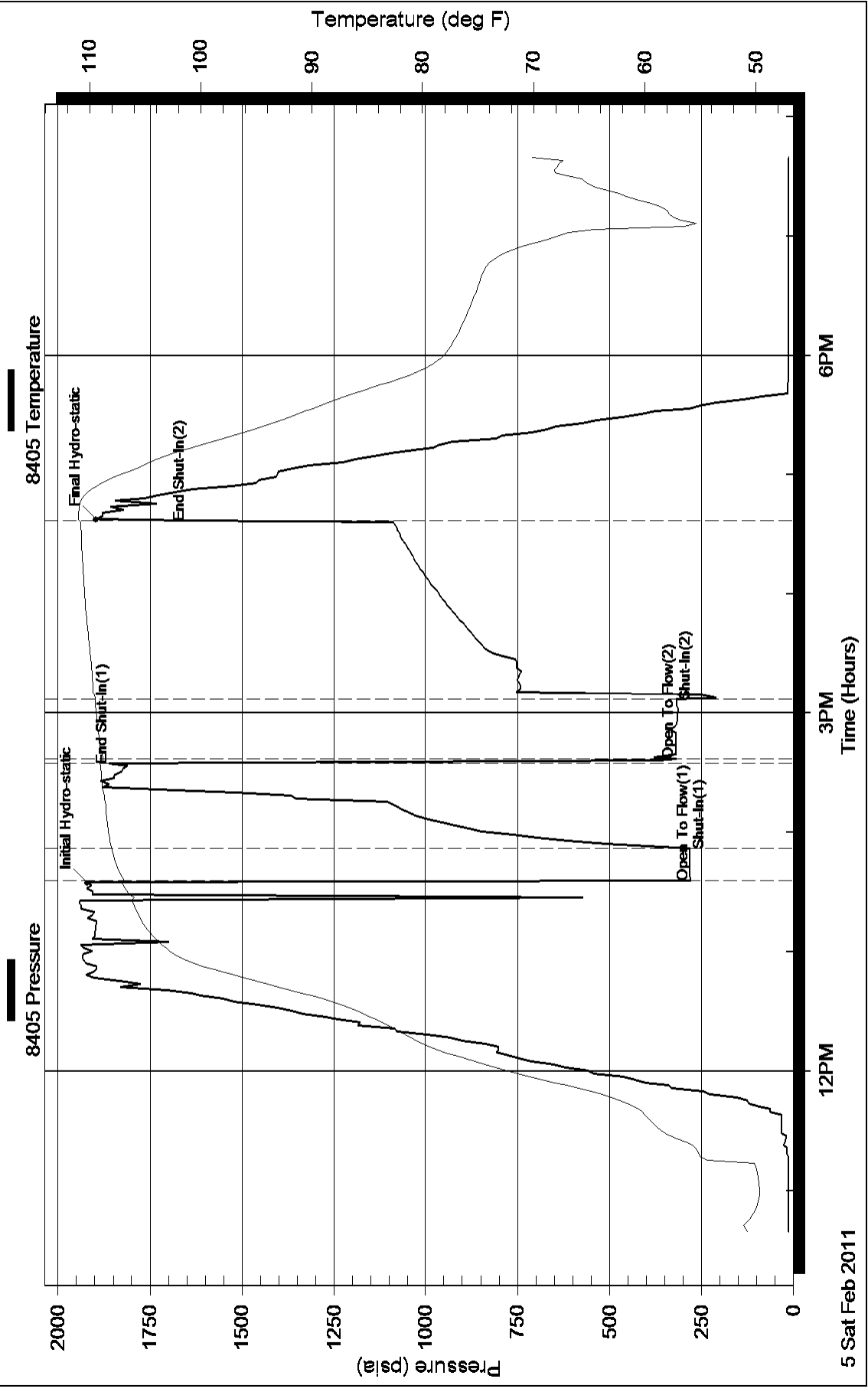
Length ft	Description	Volume bbl
813.00	Mud with spots of Oil	9.044
0.00	Mud 100%	0.000

Total Length: 813.00 ft      Total Volume: 9.044 bbl  
 Num Fluid Samples: 0      Num Gas Bombs: 0      Serial #:  
 Laboratory Name:      Laboratory Location:  
 Recovery Comments:

### Pressure vs. Time



### Pressure vs. Time





Serial #: 8525

Inside

Shelby Resources LLC.

10/22S/16W Pawnee

DST Test Number: 3

