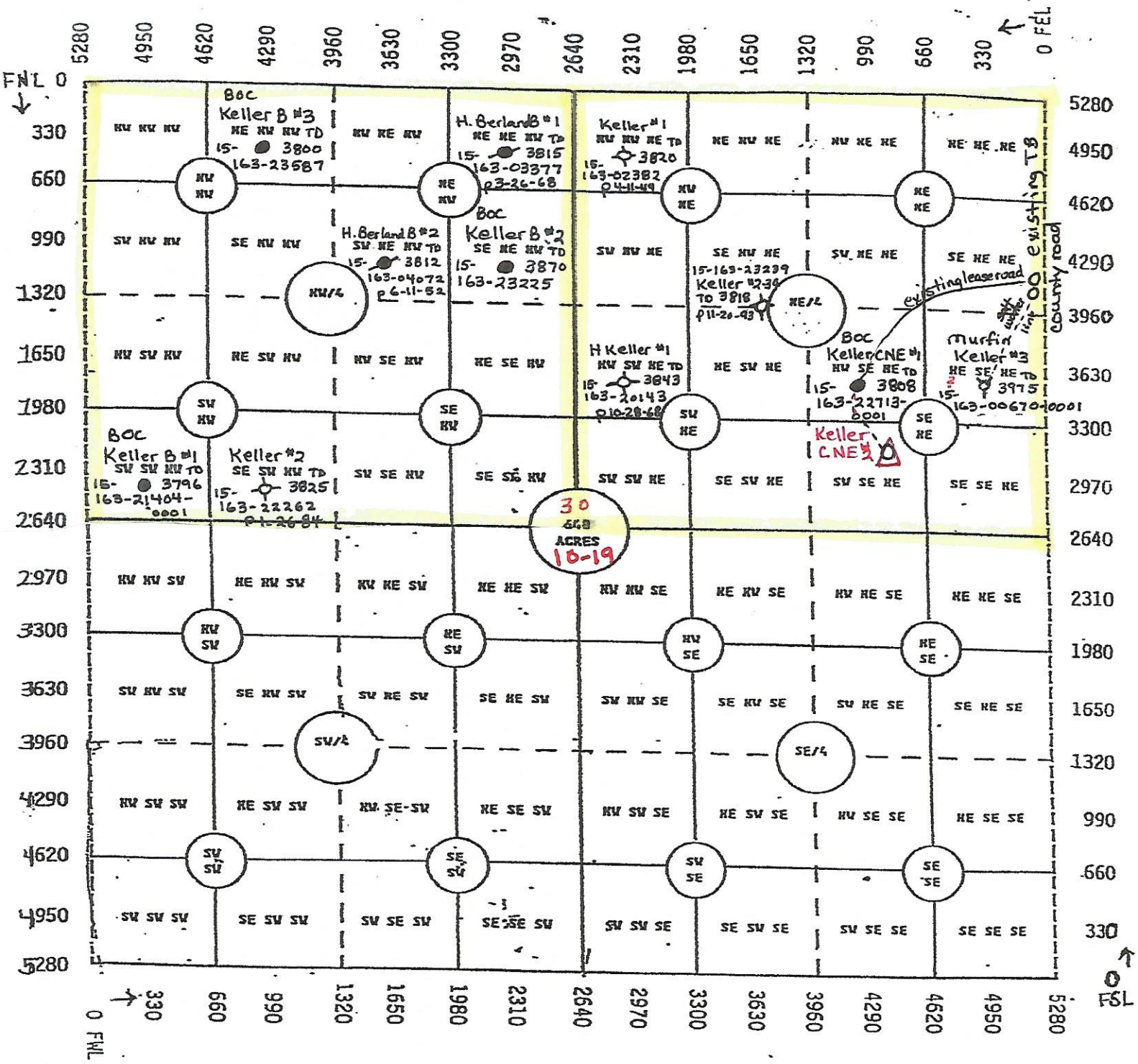


# Bowman Oil Company Keller CNE Lease

NE/4 of 30-10-19 Rooks County, Kansas



\* Keller #3 #15-163-00670-0001 KGS says SWD NESENE  
 was plugged 5-31-1954 then SWD 8-22-85 KGS says current unavailable  
 D&A TO was 3795 now 3975 but is  
 Murfin Drilling

6-15-2016

If production pipe is set, a leadline will be laid from  
 Keller CNE #2 to #1, where it will hook into existing #1 leadline  
 then will go through existing leadline to existing Tank Battery.  
 Then water goes to existing saltwaterline going to Keller #3 SWD (Murfin Drilling)