

GEOLOGICAL REPORT

Larry A. Nicholson

NAD 83
99.56329153
-100.4913012

COMPANY & WELL: Suemaur Expl & Prod Johnson #1-6
LOCATION: 1605' FNL 1541' FWL NW NW SE NW
SEC 6 TWP 6S RGE 28W
COUNTY Sherridan STATE KS

COMPANY: Suemaur Exploration & Production, LLC
API #: 15-179-21417 FIELD: WELLS
LEASE: Johnson WELL: #1-6
LOCATION: NW NW SE NW
SURVEY: 1605' FNL 1541' FWL
SECTION: 6 TWP 6S RGE 28W
COUNTY: Sherridan STATE: Kansas

ELEVATIONS
K.B. 2801
D.F. _____
G.L. 2796
All measurements from K.B. 2801

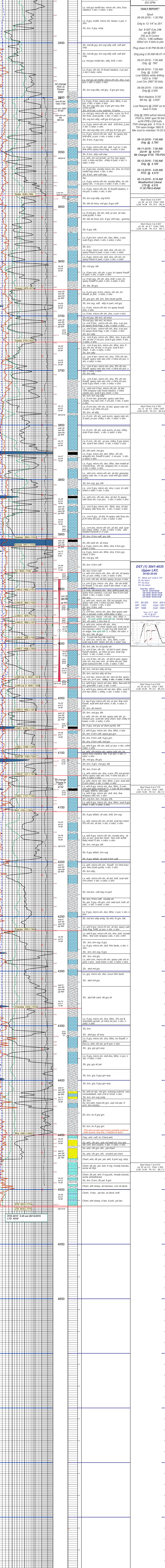
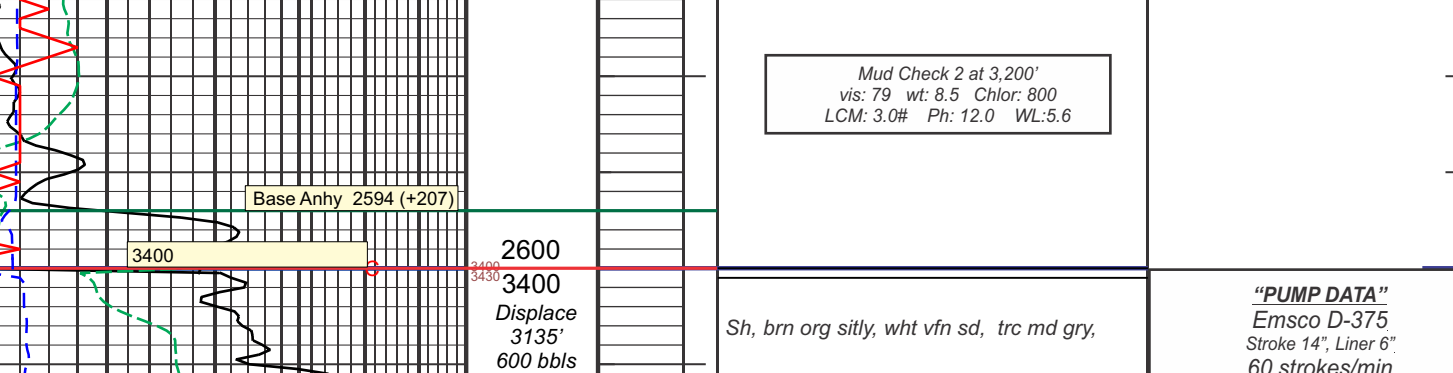
ELECTRICAL SURVEYS: Weatherford, Den, Neu, Dufal, Micro, Hi-Res
FORMATION TOPS & STRUCTURAL DATUM

FORMATION	SAMPLE TOPS	SURSEA DATUM	ELEG LOG TOPS	SURSEA DATUM	REFERENCE WELL
Stone C	2560	+241	2558	+243	A
Topoka	3264	-1103	3264	-1103	B
Heabner	3311	-1110	3311	-1110	
Tor	3395	-1134	3393	-1132	
LANS A	3952	-1151	3948	-1147	
LANS J	4096	-1295	4095	-1294	
LANS K	4121	-1320	4126	-1325	
LANS L	4141	-1340	4145	-1344	
BKC	4154	-1353	4154	-1353	
Cherokee	4334	-1533	4338	-1537	
Miss	4450	-1649	4456	-1655	
RTD	4515	-1714	4515	-1714	
LTD	4516	-1715	4516	-1715	

REMARKS & RECOMMENDATIONS:
Based on sample shows and dst results the well was P&A
*Note Rig and Loggers are on same depth.
Rig did a very good job handling lose Circ conditions from shallow sands.

LAN 762, Modified 5/05, 1/11, 4/12 Hanover, KS 66645 1inch = 25.4mm 8.5 x 97.5 216 mm x 2460 mm

LEGEND



COMPANY: Suemaur Exploration & Production, LLC
LEASE: Johnson #1-6 NW NW SE NW
LOCATION: 1605' FNL 1541' FWL SEC 6 TWP 6S RGE 28W
COUNTY: Sherridan STATE: KS

ELEVATIONS
K.B. 2801
D.F. _____
G.L. 2796
All measurements from K.B. 2801