



**TRILOBITE
TESTING, INC**

DRILL STEM TEST REPORT

American Warrior, Inc.

29-15S-10W Ellsworth, KS

3118 Cummings Rd.
PO Box 399
Garden City, KS 67846
ATTN: Luke Thompson

Branda #1-29

Job Ticket: 58081

DST#: 1

Test Start: 2016.05.23 @ 01:44:11

GENERAL INFORMATION:

Formation: **Arbuckle**

Deviated: No Whipstock: ft (KB)

Time Tool Opened: 08:10:11

Time Test Ended: 14:42:41

Test Type: Conventional Straddle (Initial)

Tester: Brannan Lonsdale

Unit No: 73

Interval: 3337.00 ft (KB) To 3347.00 ft (KB) (TVD)

Reference Elevations: 1824.00 ft (KB)

Total Depth: 3498.00 ft (KB) (TVD)

1816.00 ft (CF)

Hole Diameter: 7.88 inches Hole Condition: Poor

KB to GR/CF: 8.00 ft

Serial #: 6839 Outside

Press@RunDepth: 610.56 psig @ 3338.00 ft (KB)

Capacity: 8000.00 psig

Start Date: 2016.05.23

End Date:

2016.05.23

Last Calib.:

2016.05.23

Start Time: 01:44:12

End Time:

14:42:41

Time On Btm:

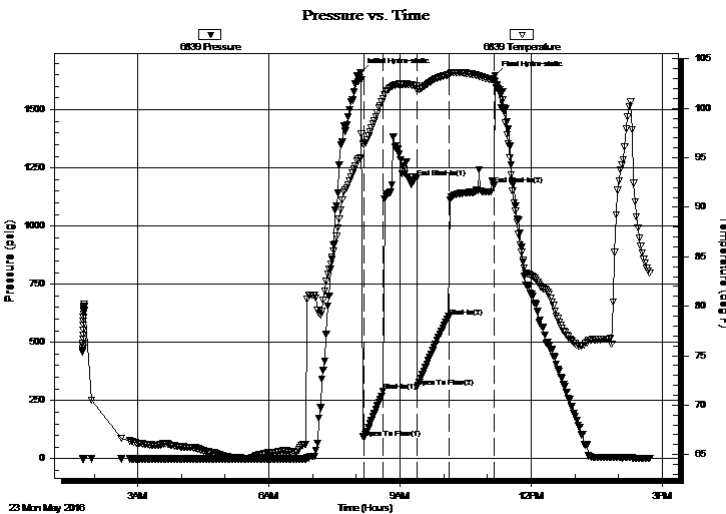
2016.05.23 @ 08:05:41

Time Off Btm:

2016.05.23 @ 11:10:41

TEST COMMENT: 30- IF- BOB 4mins
45- IS- Very weak surface blow died in 3mins
45- FF- BOB 3mins
60- FS- No blow

PRESSURE SUMMARY



Time (Min.)	Pressure (psig)	Temp (deg F)	Annotation
0	1660.46	95.00	Initial Hydro-static
5	89.27	96.35	Open To Flow (1)
31	289.01	100.93	Shut-In(1)
77	1208.27	102.28	End Shut-In(1)
78	308.39	101.88	Open To Flow (2)
121	610.56	103.40	Shut-In(2)
184	1176.48	102.82	End Shut-In(2)
185	1647.77	102.74	Final Hydro-static

Recovery

Length (ft)	Description	Volume (bbl)
159.00	WMCO, 20%W 20%M 60%O	1.97
1395.00	SWO, 5%W 95%O	19.77

Gas Rates

	Choke (inches)	Pressure (psig)	Gas Rate (Mcf/d)



TRILOBITE
TESTING, INC.

DRILL STEM TEST REPORT

American Warrior, Inc.
3118 Cummings Rd.
PO Box 399
Garden City, KS 67846
ATTN: Luke Thompson

29-15S-10W Ellsworth, KS

Branda #1-29

Job Ticket: 58081

DST#: 1

Test Start: 2016.05.23 @ 01:44:11

GENERAL INFORMATION:

Formation: **Arbuckle**

Deviated: No Whipstock: ft (KB)

Time Tool Opened: 08:10:11

Time Test Ended: 14:42:41

Test Type: Conventional Straddle (Initial)

Tester: Brannan Lonsdale

Unit No: 73

Interval: 3337.00 ft (KB) To 3347.00 ft (KB) (TVD)

Reference Elevations: 1824.00 ft (KB)

Total Depth: 3498.00 ft (KB) (TVD)

1816.00 ft (CF)

Hole Diameter: 7.88 inches Hole Condition: Poor

KB to GR/CF: 8.00 ft

Serial #: 8959 Below (Straddle)

Press@RunDepth: psig @ 3349.00 ft (KB)

Capacity: 8000.00 psig

Start Date: 2016.05.23 End Date: 2016.05.23

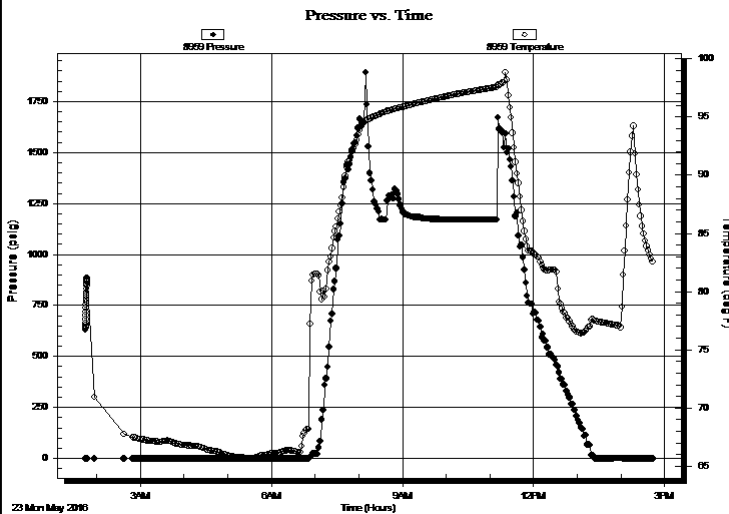
Last Calib.: 2016.05.23

Start Time: 01:44:56 End Time: 14:43:25

Time On Btm:

Time Off Btm:

TEST COMMENT: 30- IF- BOB 4mins
45- IS- Very weak surface blow died in 3mins
45- FF- BOB 3mins
60- FS- No blow



PRESSURE SUMMARY

Time (Min.)	Pressure (psig)	Temp (deg F)	Annotation

Recovery

Length (ft)	Description	Volume (bbl)
159.00	WMCO, 20%W 20%M 60%O	1.97
1395.00	SWO, 5%W 95%O	19.77

Gas Rates

Choke (inches)	Pressure (psig)	Gas Rate (Mcf/d)



**TRILOBITE
TESTING, INC**

DRILL STEM TEST REPORT

FLUID SUMMARY

American Warrior, Inc.

29-15S-10W Ellsworth, KS

3118 Cummings Rd.
PO Box 399
Garden City, KS 67846
ATTN: Luke Thompson

Branda #1-29

Job Ticket: 58081

DST#: 1

Test Start: 2016.05.23 @ 01:44:11

Mud and Cushion Information

Mud Type: Gel Chem
Mud Weight: 9.00 lb/gal
Viscosity: 52.00 sec/qt
Water Loss: 9.19 in³
Resistivity: ohm.m
Salinity: 6500.00 ppm
Filter Cake: inches

Cushion Type:
Cushion Length: ft
Cushion Volume: bbl
Gas Cushion Type:
Gas Cushion Pressure: psig

Oil API: 33 deg API
Water Salinity: ppm

Recovery Information

Recovery Table

Length ft	Description	Volume bbl
159.00	WMCO, 20%W 20%M 60%O	1.967
1395.00	SWO, 5%W 95%O	19.775

Total Length: 1554.00 ft Total Volume: 21.742 bbl

Num Fluid Samples: 0

Num Gas Bombs: 0

Serial #:

Laboratory Name:

Laboratory Location:

Recovery Comments:

