

# GEOLOGIST'S REPORT

## DRILLING TIME & SAMPLE LOG

COMPANY Berexco LLC NO. L-7  
 LEASE Evelyn  
 LOCATION 580'EWL + 1980'FEL  
 SEC. 7 TWP. 30S RNG. 40W  
 COUNTY Stanton, STATE KANSAS  
 FIELD Wildcat

CONTRACTOR Bereda Drilling Rig #1  
 COMM. 5-26-2016 COMP. 6-7-2016  
 RTD 5894 LTD \_\_\_\_\_  
 No. of DST'S NONE No. of CORES None

SAMPLES SAVED FROM 3500 TO TD  
 DRILLING TIME KEPT FROM 3500 TO TD  
 SAMPLES EXAMINED FROM 3500 TO TD  
 GEOLOGICAL SUPERVISION FROM 3500 TO TD  
 GEOLOGIST ON WELL Edwin H. Grievies

FORMATION TOPS

FORMATION TOPS	SAMPLE	LOG	SUBSEA
Base Heebnee	3669		
Lansing Fm	3735		
Marmaton	4366		
Ft. Scott	4574		
Morrow Fm	5126		
Morrow "E"	5429		
Chester	5490		
St. Genevieve	?		
St. Louis	5573		
TD	5894		

ELEVATIONS

KB	3338
DF	3336
GL	3326

MEASUREMENTS ARE ALL FROM KB

CASING RECORD

9528' OI	1715'	W	730	9X.
OI		W		9X.
OI		W		9X.
OI		W		9X.

EL. LOG AORes. SP. GR  
DEMUT. GR. Caliper  
ML. Sonic



Earth-Tech had an unmanned gas detection trailer on this well from 3500 feet to total depth.

Thank you  
 Edwin H. Grievies  
 Geologist

TIME	SAMPLE DESCRIPTION	GAS SCALE
5 10 15		10 100 1000
		3500

**STRATIGRAPHY**  
 SANDSTONE  
 LIMESTONE  
 SHALE  
 MERT

**CHROMATOGRAPH**  
 HOT WIRE BY  
 TOTAL GAS VOLUME

C1 = METHANE  
 C2 = ETHANE  
 C3 = PROPANE  
 C4 = ISOBUTANE  
 C5 = BUTANE  
 C6 = ISOPENTANE  
 C7 = PENTANE

DRILL TIME  
SCALE

SAMPLE DESCRIPTION

GAS SCALE

5 10 15

3500

10

100

1000

Interbedded Limestones  
 ① Lms. trs. to hvy. trs. wht. to cream-  
 chlk + ff. tan to tau; crypto. to  
 v.v. fn. xln; sub-chlk; sub-sucro. to  
 sucro. trs. phantom oolites IP's;  
 dud. H. yel. to trs. H. yel. fluor.;  
 ② Lms. H. gray. to tau; crypto. to  
 v.v. fn. xln; trs. sub-chlk; sub-sucro  
 + packstn.; dud. yel. fluor. IP's;  
 No cut; No vis por.  
 ③ scattered trs. Chert H. gray.  
 opaque

3600

Sh v. drk. gray to black-carb  
 Lms. grayish. tau; crypto. & r  
 packstn. to sub-lithogr. dud. yel.  
 fluor.; No cut; No vis por.  
 Sh H. gray. to H. green; soft & muddy  
 when wet; silty IP's

Base Heebner  
 3669-391

Interbedded Limestones  
 ① Fossiliferous Lms. trs. wht. to cream-  
 chlk + cream to H. tan; crypto. to v.v. fn. xln;  
 sub-chlk; sub-sucro. to sucro.; dud. yel.  
 fluor.; No cut; trs. to hvy. trs. pack  
 micro - pp. por.  
 ② Slower Dalg Lms. grayish tau to tau;  
 crypto. to v.v. fn. xln; trs. sub-chlk;  
 sub-sucro. + packstn.; dud. yel. fluor.  
 IP's; No cut; No vis por.

3700

Sh med to drk. gray, sl. to crdly.  
 calc. grdn. to Shly. Lmsts

Lansing Fm  
 3735-397

T. to bedded Limestones

Interbedded Limestones  
 ① Lms. trs. wht. to crm. - chlk + grayish tan to tan; crypto. to v. v. fin. xlin; sub-chlk, sub-sucro. to trs sucro. + trs. packstn; dul. H. yel. fluor. IP's; No cut; scattered trs poor micro-pp. por IP's  
 ② Lms. lt. gray. to grayish tan; sl. to faly. shly. IP's; crypto to v. v. fin. xlin. trs. sub-chlk to rshly, sub-sucro. + packstn; dul. H. yel. fluor. IP's No cut; No vis por.

3800

Lms. trs. wht. to crm - chlk + tan grayish. IP's; crypto. to v. v. fin. xlin; zbu. w/ phantom oolites; trs. foss. frags. IP's; dul. yel. fluor IP's No cut; scattered trs poor to sl; trs fair micro-pp por.

3900

Lms. hvy. trs. wht to crm - chlk + crm. to tan; crypto. to v. v. fin. xlin v. to extly oolitic for sl. to faly. oolitic IP's; matrix sub-chlk, sub-sucro to trs, sucro. + packstn; H. yel. to yel fluor. mottled IP's; No cut; v. zbu. fair, good to excel. oolitic. por. w/ trs poor to fair micro-pp. por. IP's; Quest. Perm.

4000

Zoned

WOR	12000
RPM	100
SFM	50
PA	1000

4000

Lms. lt. gray to grayish tan & trs tan; crypto. to v.v. fu. xln; trs. chlk.; sub-chlk.; sub-sucro & packstn.; dul. lt. yel. fluor. IP's No cut; scattered trs v. poor micro-pp. por.

4100

Lms. extr. zbn wht to cream-chlk. w/chlk oolites IP's & lt. tan to tan; crypto to v.v. fu. xln; v. to extraly oolitic & or sl. to trly oolitic IP's matrix trs. chlk, trs sub-chlk.; trs. sub-sucro & packstn.; dul. yel. to dul. lt. yel. & fluor.; No cut; zbn poor, fair, good to excel. oolitic por. Very Quest. Perm!

Lms. lt. gray, grayish tan to tan crypto to v.v. fu. xln; sl. shly IP's sub-chlk & or shly; sub-sucro & packstn.; No fluor; No cut; No ls for

Lms. similar 4102-4156

Lms similar 4156-4168

Lms similar 4102-4156

4200

Lms. similar 4156-4168

Lms. cream to wht.-chlk w/chlk oolites & trs. cream to lt. tan; crypto to v.v. fu. xln; v. to extraly oolitic & or faly. to v. oolitic; matrix chlk; sub-chlk; sub-sucro. 2nd packstn. dul. lt. yel. & fluor. No cut; zbn. poor to fair 2nd trs good oolitic por. Very Quest. Perm.

But Trip 4215  
Trip 625  
104

v.v. tu. xln.; v. to extaly oolitic  
 +/or faly. to v. oolitic; matrix  
 chlk, sub-chlk, sub-sucro. 2nd  
 packstn. idul. lt. yel. fluor.;  
 No cut; abu. poor to fair  
 2nd trs good oolitic por.  
 Very Quest. Perm.

Lms. lt. to med. gray - slt to faly  
 Shly. gradn. to grayish tan to tan  
 crypto. to v.v. tu. xln.; grayish  
 tan to tan - phantom oolitic  
 trs. sub-chlk, sub-shly, sub-sucro  
 + packstn. idul. lt. yel. fluor. 1P3

No cut; No vis por.

Lms. lt. to med. gray - slt to faly Shly.  
 crypto. to v.v. tu. xln.; sub-chlk, sub-shly  
 sub-sucro + packstn w/ trs sub-litho

No fluor.; No cut; No vis por.;  
 w/ trs. to hvy. trs thert  
 from 4354 to 4366; dr. k. gray.  
 opaque

Lms. trs. to hvy. trs. wht to crn -  
 chlk + crm to lt. tan, grayish. 1P3  
 crypto. to v.v. tu. xln.; sub-chlk,  
 sub-sucro + packstn. idul. yel.  
 fluor.; No cut; No vis por

Interbedded Limestones

① Slower Drlg. Lms similar  
 4366 - 4403

② Faster Drlg. Lms. trs to hvy trs  
 wht. to crn-chlk, trs w/ chlk oolites  
 + H. tan to tan; crypto. to  
 v.v. tu. xln.; v. to extaly oolitic  
 +/or faly to very oolitic;  
 matrix trs. sub-chlk, sub-sucro  
 + packstn. idul. H. yel. fluor.;  
 No cut; abu. prs to trs gd to  
 slt trs. excel. oolitic por.  
 Very Quest. Perm.

Lms. hvy. trs. crn-chlk + tan, gray 1P3  
 v. to extaly oolitic +/or slt to faly  
 oolitic; matrix sub-sucro + packstn.  
 idul. yel. fluor.; No cut; abu. pr. fa. gd.  
 to excel. oolitic por.  
 Quest. Perm

Interbedded Limestones w/  
 scattered thin shales

① Slower. Drlg. Lms. lt. to med.  
 gray - slt to faly. Shly. gradn. to  
 grayish tan to tan; crypto. to

v.v. tu. xln.; sub-chlk, sub-sucro  
 + packstn. idul. yel. fluor. 1P3  
 No cut; No vis porosity

② Faster Drlg. Lms. grayish tan to  
 tan; crypto. to v.v. tu. xln.;  
 v. to extaly oolitic +/or  
 faly. to very oolitic; matrix

WOB Trip 4375  
 Trip 525  
 100

WOB 40000  
 RPM 70  
 SPM 50  
 1000

Marmaton  
 4366-1018

4300

4400

4500

C1

C1

C2

C3

C

C

C

C

C

C

C

C

C

C

Microcrinoid impressions w scattered thin shales  
 ① Slower. Dalg. Lms. lt. to med. gray. - sli. to finely. Shly. gradng to grayish tan to tan; crypto. to

RAM 70-175  
 SPM 56  
 PP 900

V.V. fu. xln; sub-chlk; sub-sucro & pachstn; idul. yel. fluor. IP's No cut; No vis porosity

② Faster Dalg. Lms. grayish tan to tan; crypto. to v.v. fu. xln; v. to extly. oolitic or faly. to very oolitic; matrix sub-sucro & pachstn; idul. yel. fluor. IP's. No cut; zon. poor to fair & trsgood to excel. oolitic por.; V. Quest. Perm.

③ scattered thin sh. med. gray. sli. to extly calc

Sh. drk. gray. to black - carb  
 Interbedded Lmsts w scattered thin shs similar 4466-4588

Blk. Sh 61A  
 Ft Scott  
 4574-1236

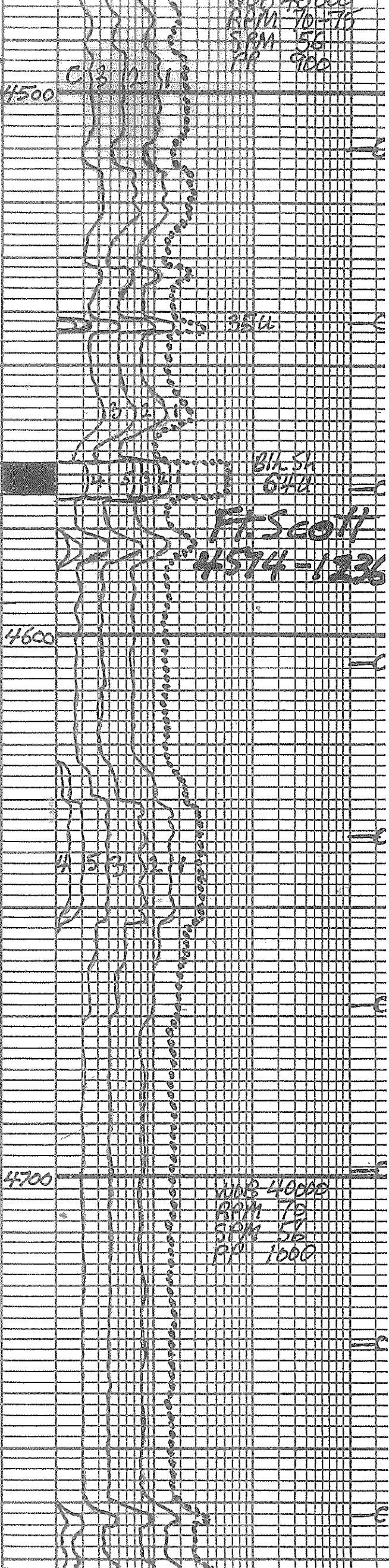
Interbedded or Gradational Limestones and Shales

① Lms. tan, grayish. IP's; crypto to v.v. fu. xln; sub-chlk, sub-sucro. & pachstn; idul. yel. fluor.; No cut; No vis por.

② Lms. lt, med. to drk. gray. - sli. to extly. Shly. gradng. to calc. Sh's; crypto. to v.v. fu. xln sub-chlk & for shln; trsgood to excel & pachstn; No fluor; No cut; No vis por.

③ Sh. med to v. drk. gray. - sli. to extly. calc. IP's gradng to shly. Lmsts.

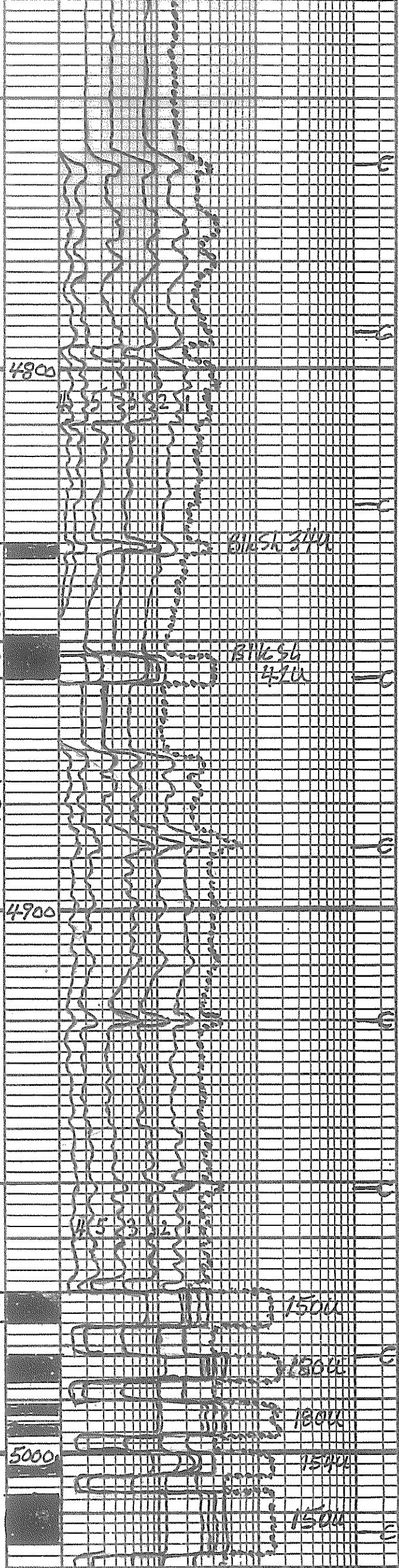
WDB 4000  
 RAM 70  
 SPM 56  
 PP 1000



Interbedded Shs + Lmsts  
 ① Sh med. to v. drk. gray; slt. to extly. calc. grading to shly Lmsts + v. drk. gray. to black-carb.  
 ② Lms. med. to v. drk. gray; crypto xlu.; v. to extly shly grading to calc Shs; sub-chalk or shly. + packstr; No fluor; No cut; No vis Por

Interbedded Limestones + Shales  
 ① Trstolites. Lms. grayish-tan to tan. crypto. to v. v. faxlu.; trs. sub-chalk sub-succra, packstr. + sub-lithogr. dul. yel. fluor; No cut; No vis Por  
 ② Est. zbn. Lms. med to drk. gray + trs. v. drk. gray; crypto. xlu; trly to extly shly grading to calc Shs; sub-chalk or shly. packstr. + trs sub-lithogr. No fluor; No cut; No vis Por.  
 ③ Shs. med to v. drk. gray; zbn. slt to extly. calc. grading to shly Lmsts

Interbedded Limestones + Slates similar 4858-4970 with/ Faster Drg Shs v. drk. gray-calc to v. drk gray to black, carb



CARB

5000

1800

1500

1500

1500

1200

1400

1500

950

1400

5100

1800

1900

1750

2000

WOB 3400  
APP 70  
SPM 58  
PP 1000

1850

Rec 1900  
EPS  
6

5200

Interbedded Limestones + Shales

① Trs. Lms. lt. gray, grayish tan to tan  
crypto. to v.v. fu. xln; trs. sub-succ  
pachstn + sub-lithogr. dul yel  
fluor. No Lust; No Vis POR

② Lms. tan, med. to drk. to v. drk. gray  
v. to extly shly; crypto. xln; j  
sub-chl. for shly; pachstn +  
sub-lithogr.; No fluor.; No Lust  
No Vis POR. gradng to calc shls

③ Sh. drk. to v. drk. gray - very  
to extly calc

④ Sh. v. drk. gray to black - carb.

## Log Pick Morrow Top 5126-1788

Shales w/ widely scattered  
thin limestone beds

① Sh. med. gray - soft w/ silky  
luster. IP's to drk. gray.  
soft to splintery; trs pyr. IP's

② Lms. lt. gray. to tan; crypto to  
v.v. fu. xln; sub-chl. sub-succ  
pachstn + trs sub-lithogr.  
Trs. dul yel. fluor; No Lust  
No Vis POR

③ Fragm. Lms. tan gradng to trs  
lt. gray; v.v. fu. to calc segr.  
grs. composed Lm grs. +  
foss fragm; grs. crypto to  
v.v. fu. xln; sub-chl. sub-succ  
pachstn + trs sub-lithogr.  
Trs w/ dul yel. fluor; No Lust  
No Vis POR.

SH 8 32.1



v.v. fu. xlu.; sub-chlly; sub-sucro  
pachstn + trs sub-lithogr.  
trs w/dul/yel. fluor; No cut  
No vis Por.

5319-5325  
Lms. H. gray. totan; cryptoto  
v.v. fu. xlu.; sub-sucro + pachstn +  
fragm. Lm 10% v.v. fu. to coarse gr  
gr. composed Lm grs + loss  
fragm.; gas crypto. Fou vfu  
xlu.; sub-sucro; pachstn  
sub-lithogr; No fluor  
No cut; No vis Por

5325-5417  
Shs w/widely scattered thin  
beds Limestone  
similar 5148-5319

A 5417-5429 Prob Sh med gray-  
soft w/trs w/silky luster  
+ dark gray soft to splintery  
w/hvy trs Lm + Qtz sdst  
similar 5429-5453

B 5429-5453 Lm + Qtz sdst  
0 to 90% Qtz. gas to 10 to  
100% Lm grs.; Lm grs. v.v. fu  
to coarse gr.; composed  
Lm grs + loss fragm.  
gas. crypto to touven. xlu.;  
sub-chlly; sub-sucro;  
pachstn + sub-lithogr.;  
Qtz. grs. v.v. fu. to coarse gr.  
ang. to abn sub-ang, sub-  
to trs rounded.; pr. sort.  
scattered trs glaucor  
chlorite; sl. trs. yel. to  
hvy trs. dul. yel. fluor;  
No cut; No vis Por; abn loose

C 5453-5468 Sh med  
gray-soft-trs silty luster  
to dark gray-soft to  
splintery w/prob  
interbeds Lm + Qtz sdst  
similar 5429-5453  
Decreasing w/depth

D 5468-5486 Sh med gray  
soft w/silky luster 10% to dk  
gray-soft to splintery

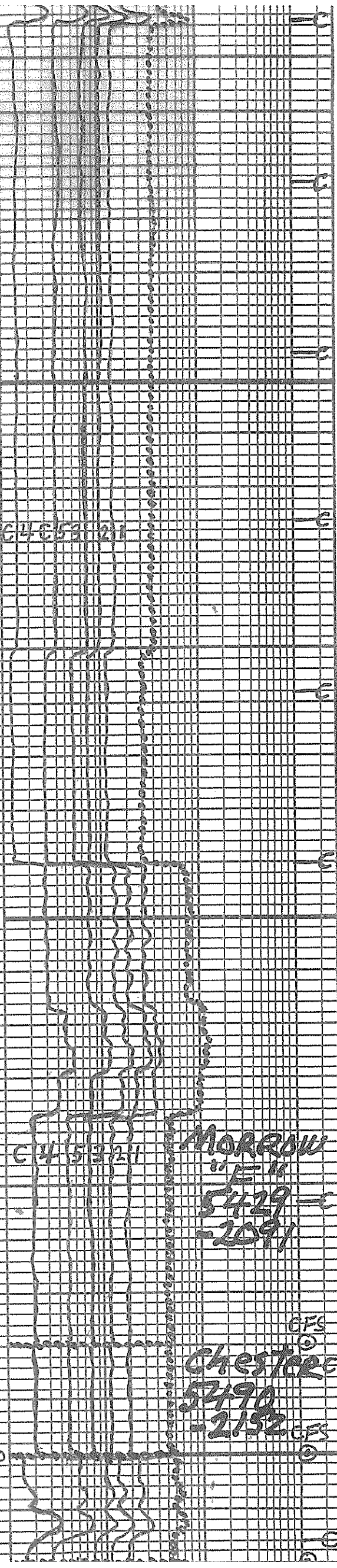
E 5486-5490 Qtz sdst  
lt. gray; v.v. fu to med gray/  
trs. coarse grs.; ang to abn  
sub-ang; sub-angled to rounded  
pr. sort; trs to abn. glauc.  
+ or chlorite; trs Sh. grs.-rounded  
to ang.; trs. w/trs Lm grs. + loss  
fragm.; trs. w/pyritic cement  
No fluor. No cut; No vis Por; Some loose grs.

5490-5570 Interbedded and/or  
gradational Limestones  
A Lms. reddish tans, reddish browns to

5300

5400

5500



C4 C53 211

C4 5321

MORROW  
"E"  
5429 -  
2091

Chester  
5490  
-2152

CFS  
CFS  
CFS

(1) ymy, v.v. in some grains  
 trs. coarse grs. ang to abn  
 sub-ang, sub-ribbed to rounded  
 PR. SORT; trs to abn. glauc.  
 & or chlorite; trs sh. grc. - Rudel  
 to ang.; trs. w/ trs. lmg grs. & fass  
 & agm; trs. w/ pyritic cement  
 No fluor. No cut; No vis for; Some locs etc.

CORE STORE  
 5790  
 -2152 CFS

5490-5570 Interbedded and/or  
 Gradational Limestones  
 (1) Lms. Reddish tan, reddish brown to  
 reds; crypto to v.v. f. xln, extly  
 Qtz sdly IP's - v. v. f. gr, ang gradng  
 to lmg siltstns; to extly micro-  
 oolitic to tas. sm. oolites w/ trs  
 to abn. Qtz sdst - v. v. f. gr - ang  
 matrix chlk, sub-chlk, sub-sucro  
 No fluor; No cut; No vis for

(2) Lms. wht, crm. to H. tan; crypto  
 to v. v. f. xln; micro-oolitic to sm.  
 oolites, slt to extly - Qtz sdly - v. v. f.  
 gr. - ang; trs gradng to v. cal c  
 siltstns; matrix chlk, sub-chlk,  
 sub-sucro to sucro; dul H. yet.  
 fluor.; No cut; slt trs. w/ v. pr.  
 micro-pp por

5570-5573 Lms. w/ abn. Chert  
 unconformity Deposit - St. Louis  
 Renewed lmg grayish. Tan to tan  
 crypto to v. v. f. xln; v. to extly  
 oolitic (sm., med + lg.) matrix  
 sub-chlk, sub-sucro & packstn  
 dul. H. yet. fluor. IP; No cut  
 No vis for - w/ abn chert tan to  
 orange; transl to opaque

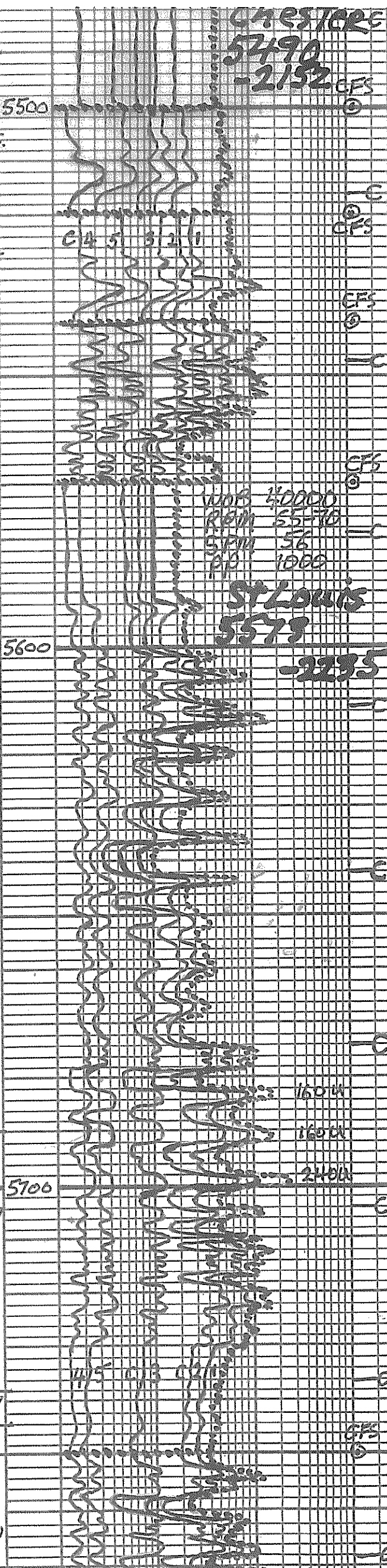
WIND 40000  
 ROOM 55-70  
 SPIN 56  
 PP 1000  
 ST LOUIS  
 5573  
 -2135

5573-5690 Lms. trs. wht to crm chlk.  
 w/ chlk oolites IP's & grayish tan to tan  
 crypto. to v. v. f. xln; faly to extly.  
 oolitic (sm., med + lg.); matrix  
 trs. chlk, sub-chlk, sub-sucro  
 & packstn; dul. H. yet. fluor. j  
 No cut; No vis for w/ trs. to  
 hv trs. Chert tan to orange  
 w/ trs wht to gry; transl to  
 opaque

5690-5738 Lms. lgray, grayish tan  
 to trs. tan; crypto. to v. v. f. xln; j  
 sub-sucro & packstn; hv trs.  
 phantom oolitic to abn. slt to  
 v. oolitic (sm., med + lg.); dul H. yet  
 fluor. j No cut; No vis for. w/ trs  
 to hv trs chert gry, tan to  
 orange & trs. wht; opaque to  
 transl

5738-5744 Lms. abn. wht to crm-  
 chlk & wht, crm to tan; crypto to  
 trs. v. v. f. xln; v. oolitic (sm.,  
 med to lg.) matrix chlk, sub-chlk  
 trs sub-sucro & slt trs packstn; dul yet  
 fluor. j No cut; 2 pieces w/ v. poor  
 micro-pp por; Prob No perm  
 w/ trs chert gry, tan; transl  
 to opaque

5744-5770 Interbedded Lmsts  
 (1) Lms. similar 5690-5738  
 (2) Lms. grayish tan to tan; crypto xln  
 packstn & sub-lithogr. j v. dul yet  
 fluor. j No cut; No vis for; chert aa

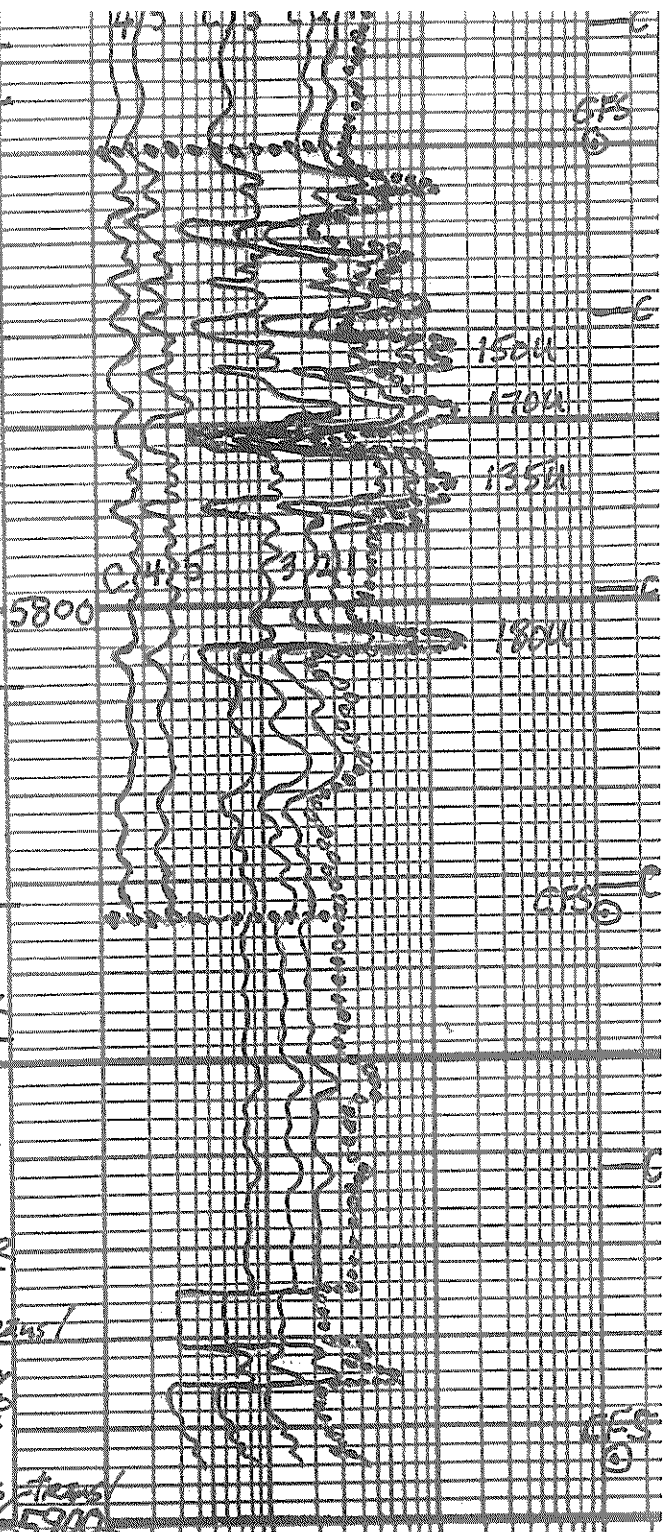


med to lg) matrix chlk, subdulk  
 trs sub-sucro + sl; trs packstn; dul yel  
 flu.or.; No cut; 2 pieces w/v. poor  
 micro-pp/por. Prob no perm.  
 w/trs chert gray totan; trns  
 to opaque  
 5744-5770 Interbedded Lmsts  
 (1) Lms. similar 5690-5738  
 (2) Lms. grayish tan totan; crypto xln  
 packstn + sub-litogr.; v. dul yel  
 flu.or.; No cut; No vis por; chert aa

5770-5808 Interbedded Lmsts  
 similar in appearance 5744-5770  
 but becoming sl; to fely Dolomitic  
 IP's w/hoy trs. Chert. gry, tan to  
 orange + trs wht; opaque to trns  
 also w/trs Anhydrite + Gypsum wh/  
 to clear; crypto xln + large clear x's

5808-5832 Dolomite w/ lmy Dolo. to  
 Dolo. Lms; grayish tan totan; trs  
 crypto. to v. v. fin. xln; lmy Dolo + Dolo lms  
 sub-chlk, sub-sucro + sl; Sucro w/  
 phantom micro-oolites to v. micro-  
 oolitic; Dolo. sub-sucro to sucro.;  
 No flu.or. to trs. dul. gldn. yel. fluor.  
 No cut; abu. pr. to fa + trs. g. micro-pp  
 por + Prob interxln por. IP's; sl; trs  
 Anhy. + Gyp. wht cry to xln to clear  
 large x's; w/trs chert  
 wht. gry, tan to orange; opp. to trns.  
 5832-47 Dolo. lt. to med. gry; crypto to  
 v. v. fin. xln; Calc. IP's; sub-sucro to v. sucro  
 + packstn; pure Dolo - dul gldn. yel. fluor.  
 No cut; v. sucro. Prob. has interxln por; sl;  
 trs. chert. dul. gry totan; opaque  
 sl; trs Anhy + Gyp. wht; cry to xln  
 to clear. large x's + wh. fragm

5847-5880 Dolo. Lm to lmy Dolo. ch. gry  
 to grayish tan; crypto to v. v. fin. xln;  
 sub-sucro + packstn; Dolo. lt. gry.  
 crypto. to v. v. fin. xln; sub-sucro and  
 packstn; pure Dolo - dul gldn. yel. fluor.  
 No cut; No vis por; w/trs to abu. Anhy +  
 Gyp. wht - cry to xln to wht to clear  
 large x's + fragm; sl; trs chert orange trns  
 Samples similar 5847-80w/abu. Anhy  
 + Gyp. + abu. Dolo tan, grayish IP's crypto  
 to v. v. fin. xln; sub-sucro to sucro + trs  
 packstn; dul yel. flu.or. IP's; No cut  
 abu. pr. to fa + trs admicro-pp por  
 + Prob interxln por IP's w/hoy trs  
 chert wht or tan to orange; opa to



7 7/8 inch Bit Info:  
 #1 PDC 1715 to 4275  
 #2 Rerun Smith F271Y  
 4275 to 5894 TD

Dev. Surv. 8  
 1. 1527 1/4° 3. 5894 TD  
 2. 4271 1 1/2°

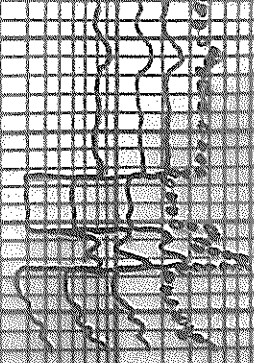
Cir. Points  
 1. 4275 6. 5540  
 2. 5160 7. 5570  
 3. 5480 8. 5750  
 4. 5500 9. 5834  
 5. 5520 10. 5894 TD

No DST's were Run  
 Daily Dalg Progress  
 1. 3500 At 6:55 PM 5-30-16  
 2. 3890 At 7:00 AM 5-31-16  
 3. 4346 At 7:00 AM 6-1-16  
 4. 4699 At 7:00 AM 6-2-16  
 5. 5026 At 7:00 AM 6-3-16  
 6. 5347 At 7:00 AM 6-4-16  
 7. 5550 At 7:00 AM 6-5-16  
 8. 5756 At 7:00 AM 6-6-16  
 9. 5894 At 7:00 AM 6-7-16

Mud Info.:

Date	5-30	5-31	6-1	6-2	6-3	6-4	6-5	6-6
	8:55A	7:35A	8:45A	7:40A	7:40A	7:50A	7:30A	7:55A
Depth	2911	3890	4388	4732	5056	5396	5569	5800
	0 0 0 75	0 2	0 3	0 15	0 35	0 2	0 35	

5847-5890 Dolo. Lin to Lm; Dolo; clayey  
 Foggyish tan; crypto to v. b. fine; silty  
 sub-succo + pale tan; Dolo. lt. gray  
 crypto. to v. b. fine; silty sub-succo and  
 pale clay; pure Dolo. - dwgldn yellow  
 locut; Alvisis foggy tan to zbn; tan  
 5 ft. wht - crypto tan to wht to clear  
 layers + sharp; silty; chest orange tan  
 Samples similar 5847-80w/abu Any  
 + Gyp + abu. Dolo tan; grayish; crypto  
 tan; fine; sub-succo; tan; succo; tan  
 pale; silty; sub-succo; pale; locut  
 zbn; part. + tan; dmick; 1000  
 + prob. inter. + pale; IP; wht; tan  
 Chest wht; tan; tan; tan; tan; tan



7 7/8 inch Bit Info:  
 #1 PDC 1715 to 4275  
 #2 Rerun Smith F27 IY  
 4275 to 5894 TD  
 Dev. Surv. S  
 1. 1527 1/4° 3.5894 TD  
 2. 4271 1 1/2°  
 Cir. Points  
 1. 4275 6. 5540  
 2. 5160 7. 5570  
 3. 5480 8. 5750  
 4. 5500 9. 5834  
 5. 5520 10. 5894 TD

No DST's were Run  
 Daily Drlg Progress  
 1. 3500 At 6:55 PM 5-30-16  
 2. 3890 At 7:00 AM 5-31-16  
 3. 4346 At 7:00 AM 6-1-16  
 4. 4699 At 7:00 AM 6-2-16  
 5. 5026 At 7:00 AM 6-3-16  
 6. 5347 At 7:00 AM 6-4-16  
 7. 5550 At 7:00 AM 6-5-16  
 8. 5756 At 7:00 AM 6-6-16  
 9. 5894 At 7:00 AM 6-7-16

Mud Info.:								
Date	5-30	5-31	6-1	6-2	6-3	6-4	6-5	6-6
	8:55A	7:35A	8:45A	7:40A	7:40A	7:50A	7:30A	7:55A
Depth	2911	3890	4388	4732	5056	5396	5569	5800
Wt.	9.0	8.75	9.3	9.3	9.15	9.35	9.2	9.35
Vis	29	43	48	42	49	50	49	80
PV	2	11	14	12	15	17	16	18
YP	2	13	14	13	17	17	16	22
GS	2/3	12/35	13/40	13/37	16/47	16/49	16/47	19/56
NL	N/C	8.8	7.2	9.2	8.8	9.2	9.2	9.2
Cake	-	1/32	1/32	1/32	1/32	1/32	1/32	1/32
pH	7.0	11.0	10.5	10.5	9.5	9.0	9.0	9.5
chl	3800	400	300	450	300	500	900	700
Ca	HVY	20	20	20	20	20	20	110
LCM	3.0	5.0	4.0	3.0	8.0	8.0	11.0	15.0

OPERATOR Berexco LLC LOCATION 580' FNL & 1980' FEL  
 LEASE Evelyn NO. 1-7 SEC. 7 TWP. 30S RANG. 40W  
 ELEVATION 3338 KB RTD 5894 COUNTY Stanton STATE Kansas