



**CEMENT
BOND LOG
WITH GAMMA RAY**

Company **STROKE OF LUCK ENERGY**
 Well **HLADKEY INJECTION NO.2**
 Field
 County **JACKSON**
 State **KANSAS**

Company **STROKE OF LUCK ENERGY**
 Well **HLADKEY INJECTION NO.2**
 Field
 County **JACKSON** State **KANSAS**

Location: API #: _____ Other Services
 SEC TWP RGE
 Permanent Datum **GROUND LEVEL** Elevation
 Log Measured From **GROUND LEVEL**
 Drilling Measured From **GROUND LEVEL**
 K.B. Elevation
 D.F.
 G.L.

Date of Service	9/29/2015			
Run Number	ONE			
Depth Driller or PBTD	2720			
Depth Logger	2721			
Bottom Log Interval	2719			
Top Log Interval	2100			
Open Hole Size	N/A			
Type Fluid	WATER			
Fluid Level	270			
Fluid Density	N/A			
Max. Recorded Temperature	N/A			
Max. Wellhead Pressure	N/A			
Wellhead Connection	N/A			
Estimated Cement Top	2275			
Unit Number	106			
Wireline Size	.288			
Location	COLBY KS			
Recorded By	J.BEGLER			
Witnessed By	CHRIS KREIMEIER			
Tubing Record	Size	Wt/Ft	Top	Bottom
Surface Casing				
Production Casing	5.5	17 LBS	0	T.D.
Liner Record				

<<< Fold Here >>>

All interpretations are opinions based on inferences from electrical or other measurements and Pioneer Wireline Services, LLC cannot and does not guarantee the accuracy or correctness of any interpretation, and Pioneer Wireline Services, LLC will not be liable or responsible for any loss, costs, damages, or expenses incurred or sustained by anyone resulting from any interpretation made by any of our officers, agents or employees.

Comments

N/A DENOTES NOT AVAILABLE OR NON-APPLICABLE.
 HOLTON KS, WEST TO SOLDIER RD, 2 SOUTH, 1/8 EAST OVER HILL, SOUTH AND EAST INTO THE CATTLE GUARD

THANK YOU FOR USING PIONEER ENERGY SERVICES

Your Pioneer Energy Services Crew	Tool Data - Services	Serial Number
Engineer: J. BEGLER Operator: M. HISS Operator: Operator:	RBT-1	7854433205

Operator	Offset (ft)	Submergence	Description	Length (ft)	O.D. (in)	Weight (lb)
----------	-------------	-------------	-------------	-------------	-----------	-------------

Sensor	Offset (ft)	Schematic	Description	Length (ft)	O.D. (in)	Weight (lb)
WVFS8	11.63		RBT-Probe (4.5040904) Probe Radii Bond Tool with Digital Telemetry	8.75	2.75	107.00
WVFS7	11.63					
WVFS6	11.63					
WVFS5	11.63					
WVFS4	11.63					
WVFS3	11.63					
WVFS2	11.63					
WVFS1	11.63					
WVFCAL	11.63					
WV3FT	11.63					
WV5FT	10.63					
				CENT-Probe Probe Centralizer	2.83	2.75
CCL	3.63					
GR	2.30		GR_CCL-Probe0004 (Probe04)	4.54	2.75	50.00

Dataset: strokeofluckyenergy_haldkey_injection2.db: field/well/run1/pass3
 Total length: 16.13 ft
 Total weight: 177.00 lb
 O.D.: 2.75 in

Log Variables

Database: C:\ProgramData\Warrior\Data\strokeofluckenergy_haldkey_injection2.db
 Dataset: field/well/run1/pass3/_vars_

Top - Bottom

PPT usec 0	CASEWGHT lb/ft 17	MAXAMPL mV 0	MINAMPL mV 1	MINATTN db/ft 0.8	SRFTEMP degF 70	CASETHCK in 0	CASEOD in 5.5
PERFS 0	TDEPTH ft 2720	BOTTEMP degF 100	BOREID in 7.875				

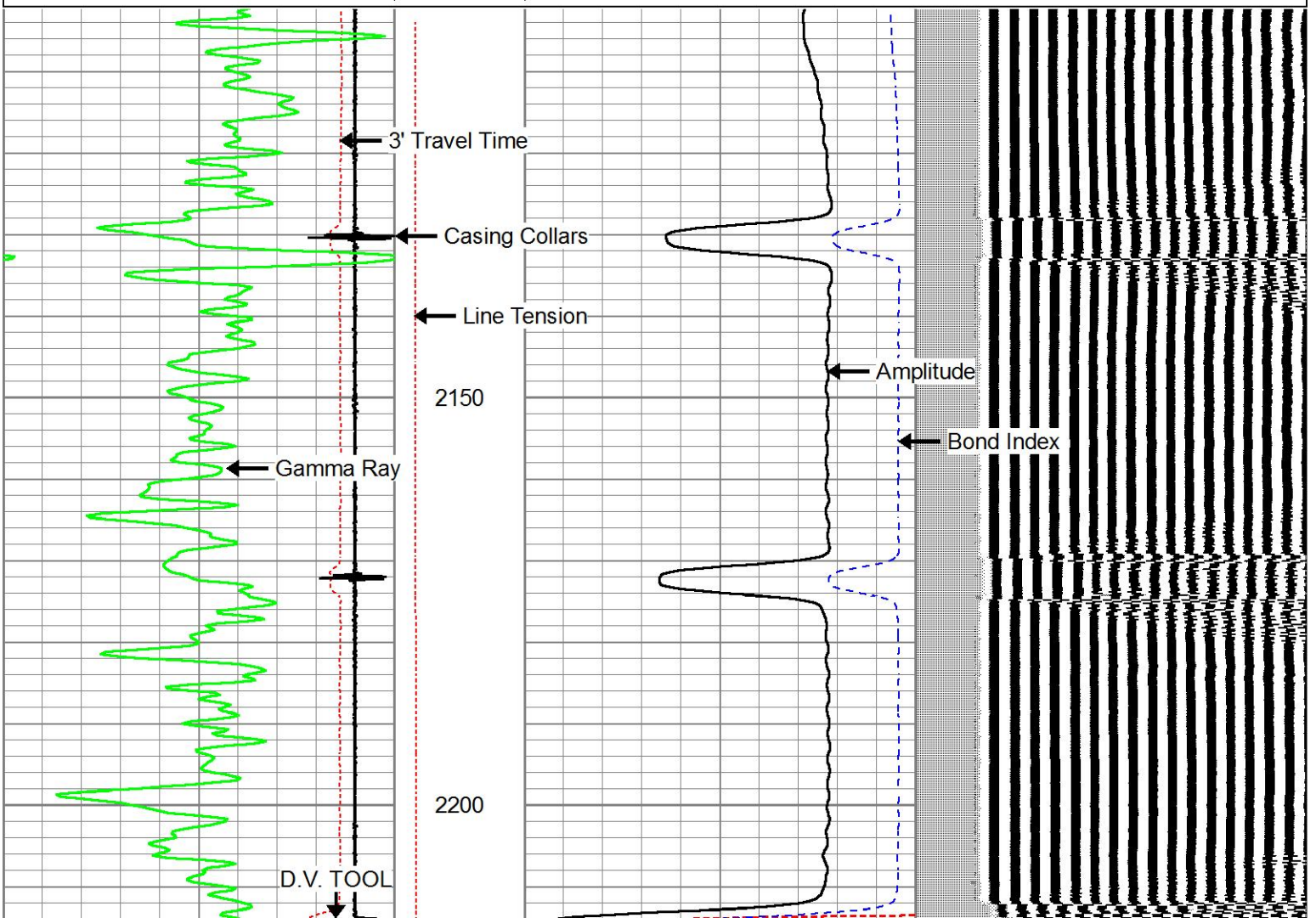


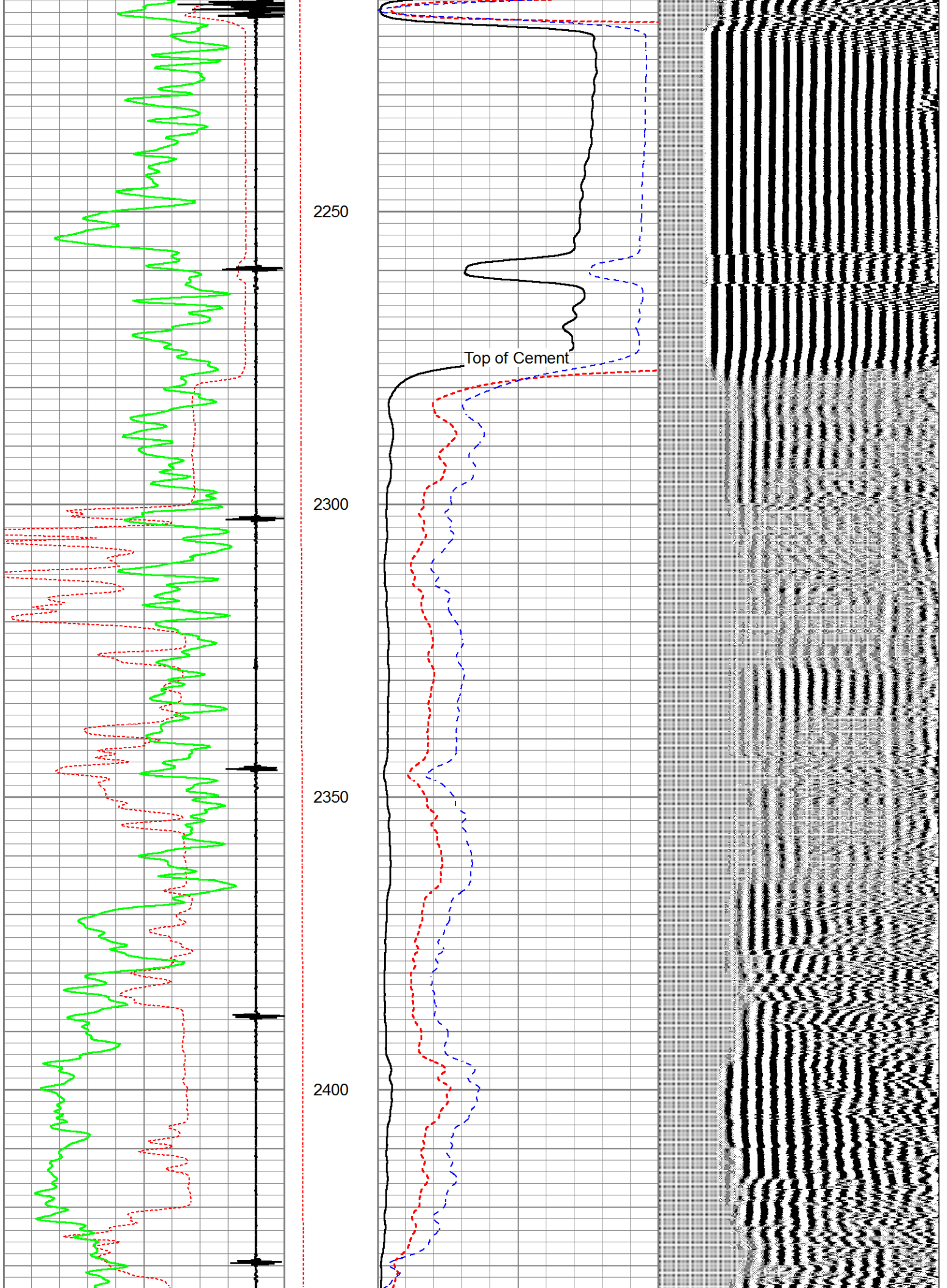
MAIN PASS

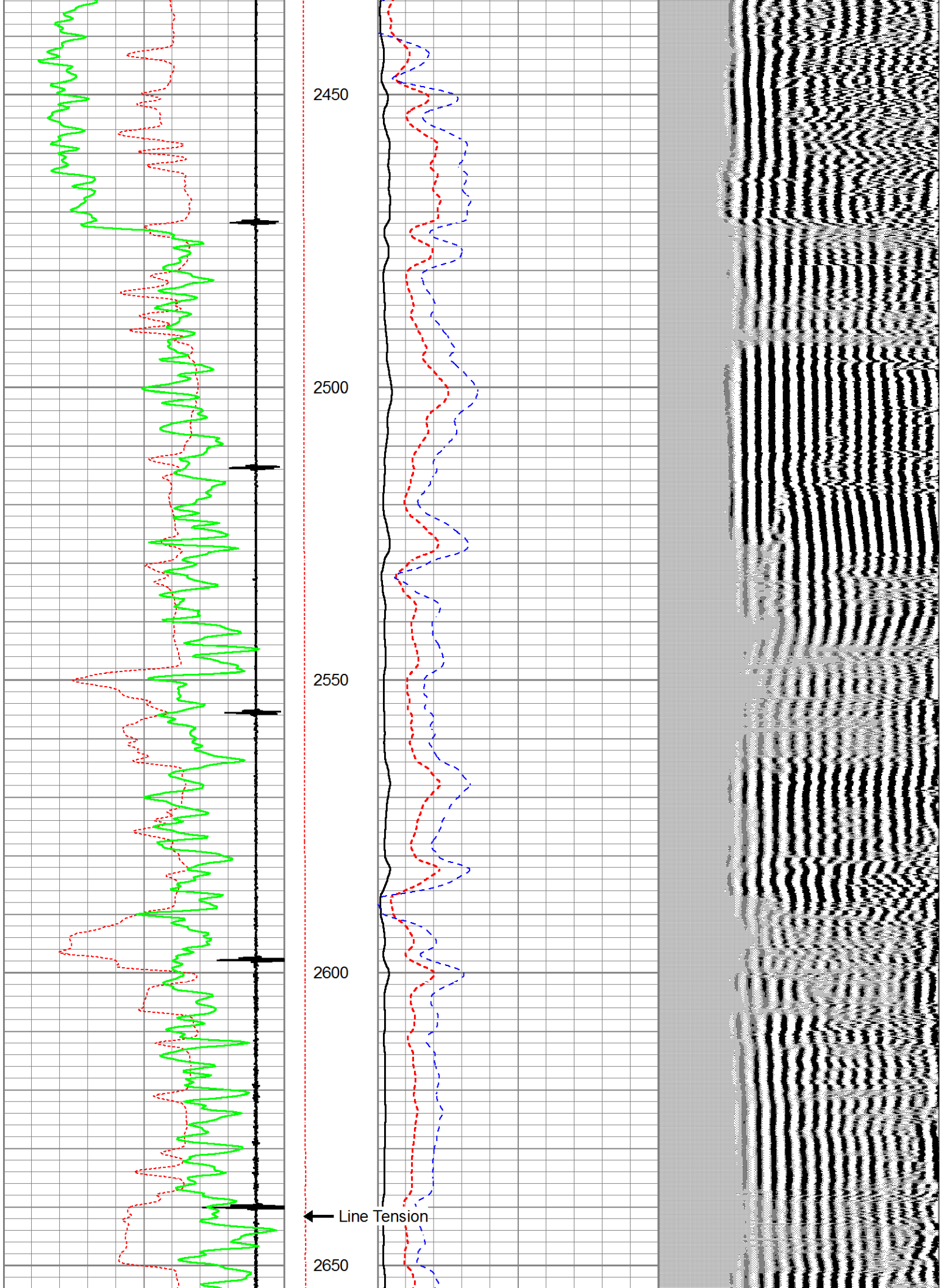
0 PSI SURFACE PRESSURE

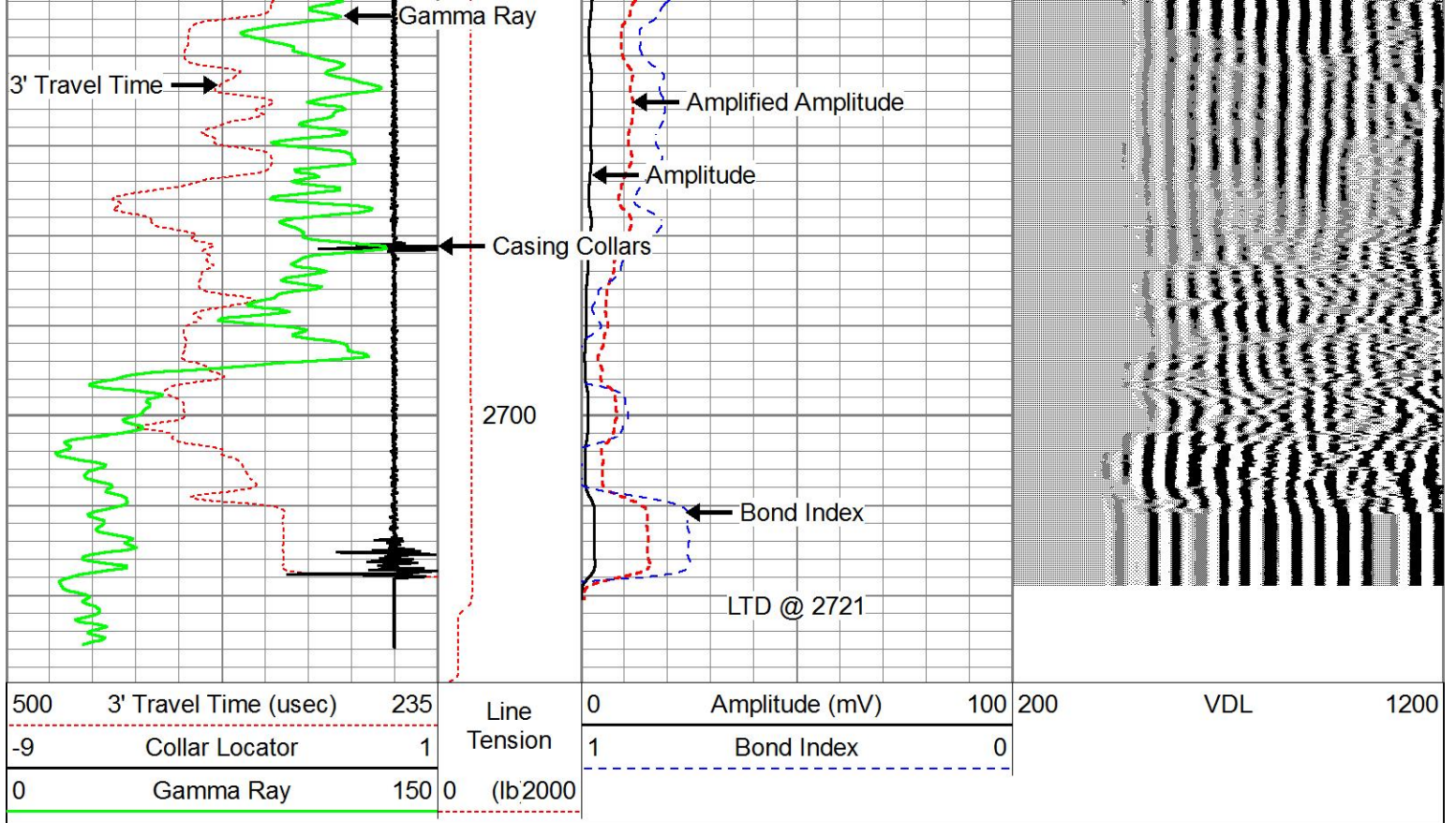
Database File: strokeofluckenergy_haldkey_injection2.db
 Dataset Pathname: pass3
 Presentation Format: pnr_cbl
 Dataset Creation: Tue Sep 29 17:07:10 2015
 Charted by: Depth in Feet scaled 1:240

500	3' Travel Time (usec)	235	Line Tension	0	Amplitude (mV)	100	200	VDL	1200
-9	Collar Locator	1	(lb/2000)	1	Bond Index	0			
0	Gamma Ray	150	0						









PIONEER
Pioneer Energy Services

REPEAT SECTION

0 PSI SURFACE PRESSURE

Database File: strokeofluckenergy_haldkey_injection2.db
 Dataset Pathname: pass2
 Presentation Format: pnr_cbl
 Dataset Creation: Tue Sep 29 17:02:14 2015
 Charted by: Depth in Feet scaled 1:240

