



# TEMPORARY ABANDONMENT WELL APPLICATION

OPERATOR: License# \_\_\_\_\_  
 Name: \_\_\_\_\_  
 Address 1: \_\_\_\_\_  
 Address 2: \_\_\_\_\_  
 City: \_\_\_\_\_ State: \_\_\_\_\_ Zip: \_\_\_\_\_ + \_\_\_\_\_  
 Contact Person: \_\_\_\_\_  
 Phone: (\_\_\_\_\_) \_\_\_\_\_  
 Contact Person Email: \_\_\_\_\_  
 Field Contact Person: \_\_\_\_\_  
 Field Contact Person Phone: (\_\_\_\_\_) \_\_\_\_\_

API No. 15- \_\_\_\_\_  
 Spot Description: \_\_\_\_\_  
 \_\_\_\_\_ - \_\_\_\_\_ - \_\_\_\_\_ - \_\_\_\_\_ Sec. \_\_\_\_\_ Twp. \_\_\_\_\_ S. R. \_\_\_\_\_  E  W  
 \_\_\_\_\_ feet from  N /  S Line of Section  
 \_\_\_\_\_ feet from  E /  W Line of Section  
 GPS Location: Lat: \_\_\_\_\_, Long: \_\_\_\_\_  
(e.g. xx.xxxxx) (e.g. -xxx.xxxxx)  
 Datum:  NAD27  NAD83  WGS84  
 County: \_\_\_\_\_ Elevation: \_\_\_\_\_  GL  KB  
 Lease Name: \_\_\_\_\_ Well #: \_\_\_\_\_  
 Well Type: (check one)  Oil  Gas  OG  WSW  Other: \_\_\_\_\_  
 SWD Permit #: \_\_\_\_\_  ENHR Permit #: \_\_\_\_\_  
 Gas Storage Permit #: \_\_\_\_\_  
 Spud Date: \_\_\_\_\_ Date Shut-In: \_\_\_\_\_

	Conductor	Surface	Production	Intermediate	Liner	Tubing
Size						
Setting Depth						
Amount of Cement						
Top of Cement						
Bottom of Cement						

Casing Fluid Level from Surface: \_\_\_\_\_ How Determined? \_\_\_\_\_ Date: \_\_\_\_\_

Casing Squeeze(s): \_\_\_\_\_ to \_\_\_\_\_ w / \_\_\_\_\_ sacks of cement, \_\_\_\_\_ to \_\_\_\_\_ w / \_\_\_\_\_ sacks of cement. Date: \_\_\_\_\_  
(top) (bottom) (top) (bottom)

Do you have a valid Oil & Gas Lease?  Yes  No

Depth and Type:  Junk in Hole at \_\_\_\_\_  Tools in Hole at \_\_\_\_\_ Casing Leaks:  Yes  No Depth of casing leak(s): \_\_\_\_\_  
(depth) (depth)

Type Completion:  ALT. I  ALT. II Depth of:  DV Tool: \_\_\_\_\_ w / \_\_\_\_\_ sacks of cement  Port Collar: \_\_\_\_\_ w / \_\_\_\_\_ sack of cement  
(depth) (depth)

Packer Type: \_\_\_\_\_ Size: \_\_\_\_\_ Inch Set at: \_\_\_\_\_ Feet

Total Depth: \_\_\_\_\_ Plug Back Depth: \_\_\_\_\_ Plug Back Method: \_\_\_\_\_

**Geological Data:**

Formation Name	Formation Top	Formation Base	Completion Information
1. _____	At: _____	to _____ Feet	Perforation Interval _____ to _____ Feet or Open Hole Interval _____ to _____ Feet
2. _____	At: _____	to _____ Feet	Perforation Interval _____ to _____ Feet or Open Hole Interval _____ to _____ Feet

~~UNDER PENALTY OF PERJURY I HEREBY ATTEST THAT THE INFORMATION CONTAINED HEREIN IS TRUE AND CORRECT TO THE BEST OF MY KNOWLEDGE~~

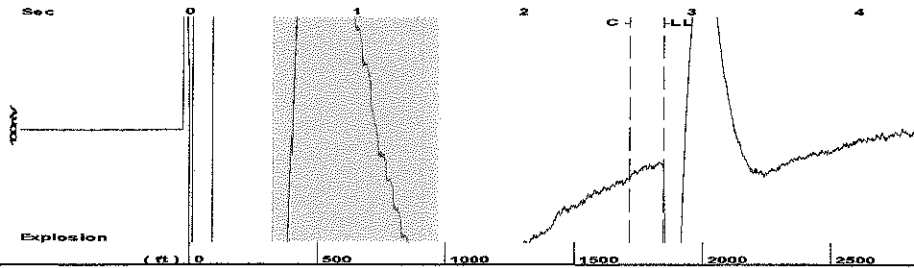
Submitted Electronically

<b>Do NOT Write in This Space - KCC USE ONLY</b>	Date Tested: _____	Results: _____	Date Plugged: _____	Date Repaired: _____	Date Put Back in Service: _____
	Review Completed by: _____ Comments: _____				
TA Approved: <input type="checkbox"/> Yes <input type="checkbox"/> Denied Date: _____					

**Mail to the Appropriate KCC Conservation Office:**

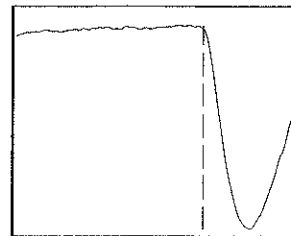
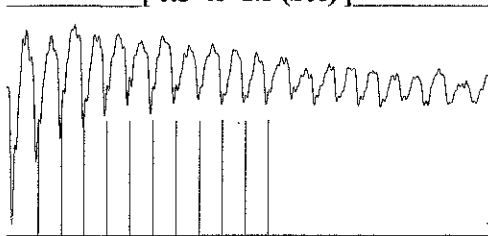
	KCC District Office #1 - 210 E. Frontview, Suite A, Dodge City, KS 67801	Phone 620.225.8888
	KCC District Office #2 / UPGS - 3450 N. Rock Road, Building 600, Suite 601, Wichita, KS 67226	Phone 316.630.4000
	KCC District Office #3 - 1500 SW Seventh Steet, Chanute, KS 66720	Phone 620.432.2300
	KCC District Office #4 - 2301 E. 13th Street, Hays, KS 67601-2651	Phone 785.625.0550

Group: MyWells Well: Jacquart #2 (acquired on: 06/08/16 11:25:57)



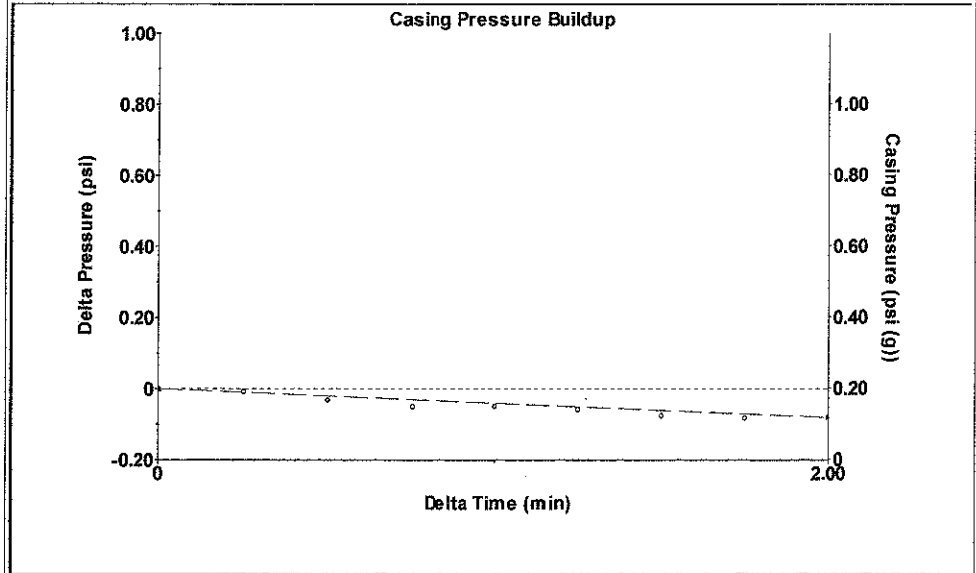
Filter Type High Pass Automatic Collar Count Yes Time 2.832 sec  
 Manual Acoustic Veloc 1321.7 ft/s Manual JTS/sec 21.2766 Joints 59.4041 Jts  
 Depth 1845.09 ft

[ 0.5 to 1.5 (Sec) ]



Analysis Method: Automatic

Group: MyWells Well: Jacquart #2 (acquired on: 06/08/16 11:25:57)



Change in Pressure -0.08 psi PT12865  
 Change in Time 2.00 min Range 0 - ? psi

Group: MyWells Well: Jacquart #2 (acquired on: 06/08/16 11:25:57)

<b>Production</b>	<b>Potential</b>	<b>Casing Pressure</b>
Oil -*- BBL/D	-* BBL/D	0.2 psi (g)
Water -*- BBL/D	-* BBL/D	Casing Pressure Buildup
Gas -*- Mscf/D	-* Mscf/D	-0.1 psi
		2.00 min
<b>IPR Method</b>	<b>Vogel</b>	<b>Gas/Liquid Interface Pressure</b>
PBHP/SBHP -*-	-*-	0.9 psi (g)
Production Efficiency 0.0		
Oil 40 deg.API		<b>Liquid Level Depth</b>
Water 1.05 Sp.Gr.H2O		1845.09 ft
Gas 0.69 Sp.Gr.AIR		<b>Pump Intake Depth</b>
		2966.00 ft
<b>Acoustic Velocity</b> 1303.03 ft/s		<b>Formation Depth</b>
		2966.00 ft



**Producing**

Annular Gas Flow 0 Mscf/D

% Liquid 100 %

**Pump Intake**

378.4 psi (g)

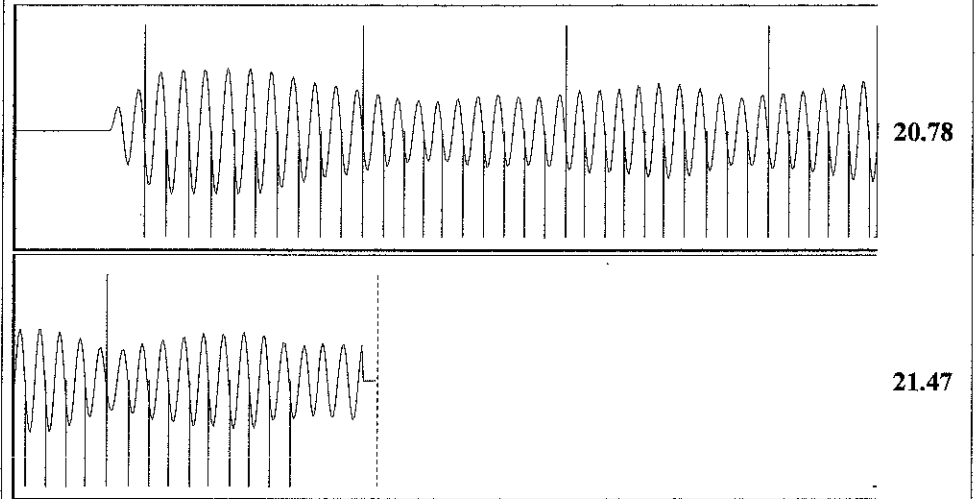
**Producing BHP**

378.4 psi (g)

**Static BHP**

-\*- psi (g)

Group: MyWells Well: Jacquart #2 (acquired on: 06/08/16 11:25:57)



Acoustic Velocity	1303.03 ft/s	Joints counted	49
Joints Per Second	20.976 jts/sec	Joints to liquid level	59.4041
Depth to liquid level	1845.09 ft	Filter Width	19.2766 23.2766
Automatic Collar Count	Yes	Time to 1st Collar	0.296 2.632

Conservation Division  
District Office No. 1  
210 E. Frontview, Suite A  
Dodge City, KS 67801



Phone: 620-225-8888  
Fax: 620-225-8885  
<http://kcc.ks.gov/>

Jay Scott Emler, Chairman  
Shari Feist Albrecht, Commissioner  
Pat Apple, Commissioner

Sam Brownback, Governor

July 12, 2016

Melody C. Fletcher  
Oil Producers, Inc. of Kansas  
1710 WATERFRONT PKWY  
WICHITA, KS 67206-6603

Re: Temporary Abandonment  
API 15-175-21950-00-01  
JACQUART 2  
SW/4 Sec.30-33S-32W  
Seward County, Kansas

Dear Melody C. Fletcher:

"Your temporary abandonment (TA) application for the well listed above has been approved. In accordance with K.A.R. 82-3-111 the TA status of this well will expire 07/12/2017.

- \* If you return this well to service or plug it, please notify the District Office.
- \* If you sell this well you are required to file a Transfer of Operator form, T-1.
- \* If the well will remain temporarily abandoned, you must submit a new TA application, CP-111, before 07/12/2017.

You may contact me at the number above if you have questions.

Very truly yours,

Michael Maier"