



TEMPORARY ABANDONMENT WELL APPLICATION

All blanks must be complete

OPERATOR: License# _____
Name: _____
Address 1: _____
Address 2: _____
City: _____ State: _____ Zip: _____ + _____
Contact Person: _____
Phone: (_____) _____
Contact Person Email: _____
Field Contact Person: _____
Field Contact Person Phone: (_____) _____

API No. 15- _____
Spot Description: _____
____ - ____ - ____ - ____ Sec. _____ Twp. _____ S. R. _____ E W
_____ feet from N / S Line of Section
_____ feet from E / W Line of Section
GPS Location: Lat: _____, Long: _____
(e.g. xx.xxxxx) (e.g. -xxx.xxxxx)
Datum: NAD27 NAD83 WGS84
County: _____ Elevation: _____ GL KB
Lease Name: _____ Well #: _____
Well Type: (check one) Oil Gas OG WSW Other: _____
 SWD Permit #: _____ ENHR Permit #: _____
 Gas Storage Permit #: _____
Spud Date: _____ Date Shut-In: _____

| | Conductor | Surface | Production | Intermediate | Liner | Tubing |
|------------------|-----------|---------|------------|--------------|-------|--------|
| Size | | | | | | |
| Setting Depth | | | | | | |
| Amount of Cement | | | | | | |
| Top of Cement | | | | | | |
| Bottom of Cement | | | | | | |

Casing Fluid Level from Surface: _____ How Determined? _____ Date: _____
Casing Squeeze(s): _____ to _____ w / _____ sacks of cement, _____ to _____ w / _____ sacks of cement. Date: _____
(top) (bottom) (top) (bottom)
Do you have a valid Oil & Gas Lease? Yes No
Depth and Type: Junk in Hole at _____ Tools in Hole at _____ Casing Leaks: Yes No Depth of casing leak(s): _____
(depth) (depth)
Type Completion: ALT. I ALT. II Depth of: DV Tool: _____ w / _____ sacks of cement Port Collar: _____ w / _____ sack of cement
(depth) (depth)
Packer Type: _____ Size: _____ Inch Set at: _____ Feet
Total Depth: _____ Plug Back Depth: _____ Plug Back Method: _____

Geological Data:

| Formation Name | Formation Top | Formation Base | Completion Information |
|----------------|---------------|----------------|--|
| 1. _____ | At: _____ | to _____ Feet | Perforation Interval _____ to _____ Feet or Open Hole Interval _____ to _____ Feet |
| 2. _____ | At: _____ | to _____ Feet | Perforation Interval _____ to _____ Feet or Open Hole Interval _____ to _____ Feet |

UNDER PENALTY OF PERJURY I HEREBY ATTEST THAT THE INFORMATION CONTAINED HEREIN IS TRUE AND CORRECT TO THE BEST OF MY KNOWLEDGE

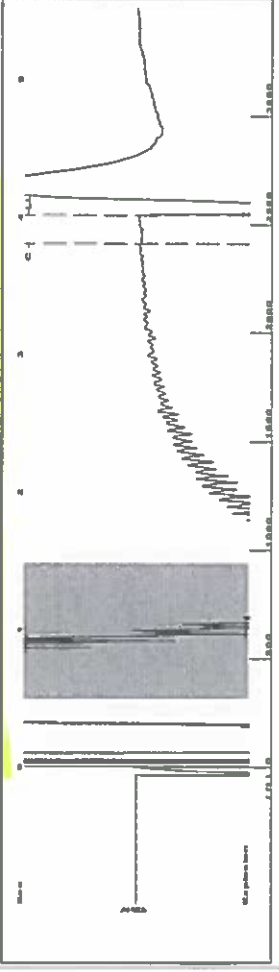
Submitted Electronically

| | | | | | |
|---|--|----------------|---------------------|----------------------|---------------------------------|
| Do NOT Write in This Space - KCC USE ONLY | Date Tested: _____ | Results: _____ | Date Plugged: _____ | Date Repaired: _____ | Date Put Back in Service: _____ |
| | Review Completed by: _____ Comments: _____ | | | | |
| TA Approved: <input type="checkbox"/> Yes <input type="checkbox"/> Denied Date: _____ | | | | | |

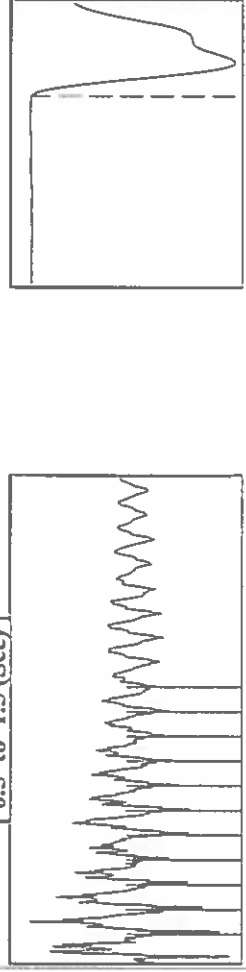
Mail to the Appropriate KCC Conservation Office:

| | | |
|--|---|--------------------|
| | KCC District Office #1 - 210 E. Frontview, Suite A, Dodge City, KS 67801 | Phone 620.225.8888 |
| | KCC District Office #2 / UPGS - 3450 N. Rock Road, Building 600, Suite 601, Wichita, KS 67226 | Phone 316.630.4000 |
| | KCC District Office #3 - 1500 SW Seventh Steet, Chanute, KS 66720 | Phone 620.432.2300 |
| | KCC District Office #4 - 2301 E. 13th Street, Hays, KS 67601-2651 | Phone 785.625.0550 |

Group: TAD Well: Tait B 2 (acquired on: 05/14/16 08:54:42)



Filter Type High Pass Automatic Collar Count Ycs 19.685
 Manual Acoustic Veloc 1248.03 ft/s Manual JTS/sec

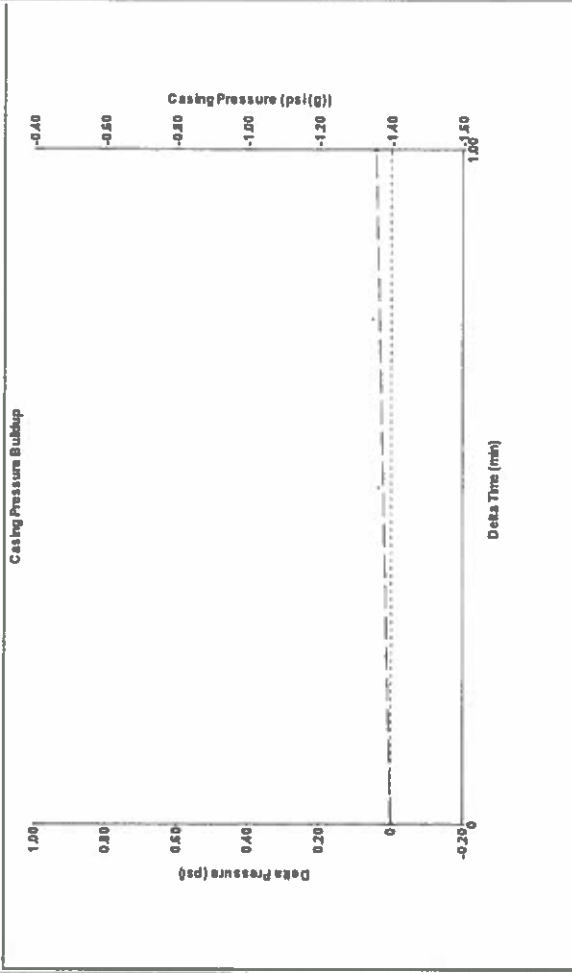


Analysis Method: Automatic

Group: TAD Well: Tait B 2 (acquired on: 05/14/16 08:54:42)

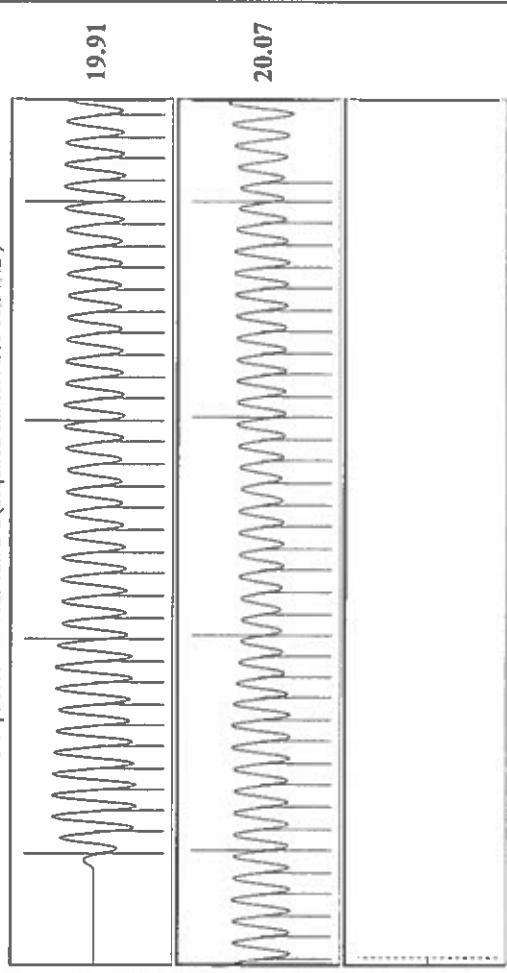
| | | | |
|--------------------------------------|--------------|-------------------------------|------------------|
| Production Current | Potential | Casing Pressure | Producing |
| Oil - - - | BBL/D - 1.4 | psi (g) - 0.0 | Annular Gas Flow |
| Water - - - | BBL/D - 0.0 | psi - 1.00 | % Liquid 97 |
| Gas - - - | Mscf/D - 0.0 | min - 0.5 | psi (g) - - - |
| IPR Method | Vogel - - - | Gas/Liquid Interface Pressure | Pump Intake |
| PBHP/SBHP | 0.0 | Liquid Level Depth | 122.3 |
| Production Efficiency | | 2544.71 ft | psi (g) |
| Oil 40 deg API | | Pump Intake Depth | 96.1 |
| Water 1.05 Sp.Gr H2O | | 2918.00 ft | psi (g) |
| Gas 0.74 Sp.Gr AIR | | Formation Depth | - - - |
| Acoustic Velocity | 1267.29 ft/s | 2840.00 ft | psi (g) |
| Formation Submergence | | | |
| Total Gaseous Liquid Column HT (TVD) | 373 ft | | |
| Equivalent Gas Free Liquid HT (TVD) | 363 ft | | |
| Acoustic Test | | | |

Group: TAD Well: Tait B 2 (acquired on: 05/14/16 08:54:42)



Change in Pressure 0.04 psi PT8746 Range
 Change in Time 1.00 min

Group: TAD Well: Tait B 2 (acquired on: 05/14/16 08:54:42)



| | | | |
|------------------------|-----------------|------------------------|---------|
| Acoustic Velocity | 1267.29 ft/s | Joints counted | 71 |
| Joints Per Second | 19.9887 jts/sec | Joints to liquid level | 80.2748 |
| Depth to liquid level | 2544.71 ft | Filter Width | 17.685 |
| Automatic Collar Count | Yes | Time to 1st Collar | 0.256 |
| | | | 3.808 |

Conservation Division
District Office No. 1
210 E. Frontview, Suite A
Dodge City, KS 67801



Phone: 620-225-8888
Fax: 620-225-8885
<http://kcc.ks.gov/>

Jay Scott Emler, Chairman
Shari Feist Albrecht, Commissioner
Pat Apple, Commissioner

Sam Brownback, Governor

July 19, 2016

Katherine McClurkan
Merit Energy Company, LLC
13727 Noel Road, Suite 1200
DALLAS, TX 75240

Re: Temporary Abandonment
API 15-055-22349-01-00
Tait A 4
NW/4 Sec.10-25S-33W
Finney County, Kansas

Dear Katherine McClurkan:

"Your temporary abandonment (TA) application for the well listed above has been approved. In accordance with K.A.R. 82-3-111 the TA status of this well will expire 07/19/2017.

- * If you return this well to service or plug it, please notify the District Office.
- * If you sell this well you are required to file a Transfer of Operator form, T-1.
- * If the well will remain temporarily abandoned, you must submit a new TA application, CP-111, before 07/19/2017.

You may contact me at the number above if you have questions.

Very truly yours,

Michael Maier"