



TEMPORARY ABANDONMENT WELL APPLICATION

OPERATOR: License# _____

Name: _____

Address 1: _____

Address 2: _____

City: _____ State: _____ Zip: _____ + _____

Contact Person: _____

Phone: (_____) _____

Contact Person Email: _____

Field Contact Person: _____

Field Contact Person Phone: (_____) _____

API No. 15- _____

Spot Description: _____

____ - ____ - ____ - ____ Sec. _____ Twp. _____ S. R. _____ ☐ E ☐ W_____ feet from ☐ N / ☐ S Line of Section_____ feet from ☐ E / ☐ W Line of Section

GPS Location: Lat: _____, Long: _____

Datum: ☐ NAD27 ☐ NAD83 ☐ WGS84County: _____ Elevation: _____ ☐ GL ☐ KB

Lease Name: _____ Well #: _____

Well Type: (check one) ☐ Oil ☐ Gas ☐ OG ☐ WSW ☐ Other: _____☐ SWD Permit #: _____ ☐ ENHR Permit #: _____☐ Gas Storage Permit #: _____

Spud Date: _____ Date Shut-In: _____

	Conductor	Surface	Production	Intermediate	Liner	Tubing
Size						
Setting Depth						
Amount of Cement						
Top of Cement						
Bottom of Cement						

Casing Fluid Level from Surface: _____ How Determined? _____ Date: _____

Casing Squeeze(s): _____ to _____ w / _____ sacks of cement, _____ to _____ w / _____ sacks of cement. Date: _____

Do you have a valid Oil & Gas Lease? ☐ Yes ☐ NoDepth and Type: ☐ Junk in Hole at _____ ☐ Tools in Hole at _____ Casing Leaks: ☐ Yes ☐ No Depth of casing leak(s): _____Type Completion: ☐ ALT. I ☐ ALT. II Depth of: ☐ DV Tool: _____ w / _____ sacks of cement ☐ Port Collar: _____ w / _____ sack of cement

Packer Type: _____ Size: _____ Inch Set at: _____ Feet

Total Depth: _____ Plug Back Depth: _____ Plug Back Method: _____

Geological Data:**Formation Name**

Formation Top Formation Base

Completion Information

1. _____ At: _____ to _____ Feet Perforation Interval _____ to _____ Feet or Open Hole Interval _____ to _____ Feet

2. _____ At: _____ to _____ Feet Perforation Interval _____ to _____ Feet or Open Hole Interval _____ to _____ Feet

UNDER PENALTY OF PERJURY I HEREBY ATTEST THAT THE INFORMATION CONTAINED HEREIN IS TRUE AND CORRECT TO THE BEST OF MY KNOWLEDGE

Submitted Electronically

**Do NOT Write in This
Space - KCC USE ONLY**

Date Tested: _____ Results: _____ Date Plugged: _____ Date Repaired: _____ Date Put Back in Service: _____

Review Completed by: _____ Comments: _____

TA Approved: ☐ Yes ☐ Denied Date: _____**Mail to the Appropriate KCC Conservation Office:**

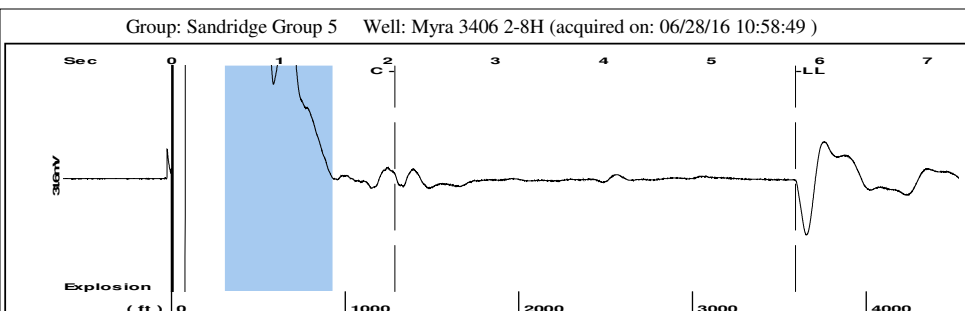
	KCC District Office #1 - 210 E. Frontview, Suite A, Dodge City, KS 67801	Phone 620.225.8888
	KCC District Office #2 / UPGS - 3450 N. Rock Road, Building 600, Suite 601, Wichita, KS 67226	Phone 316.630.4000
	KCC District Office #3 - 1500 SW Seventh Steet, Chanute, KS 66720	Phone 620.432.2300
	KCC District Office #4 - 2301 E. 13th Street, Hays, KS 67601-2651	Phone 785.625.0550

General	
Well ID	125690
Well	Myra 3406 2-8H
Company	Sandridge
Operator	- * -
Lease Name	Myra 3406 2-8H
Elevation	1295.00 ft
Production Method	Other
Dataset Description	
Comment	

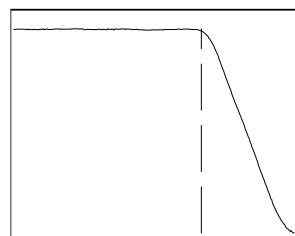
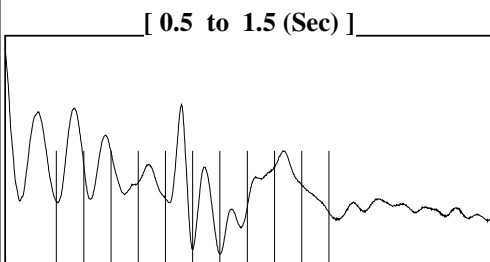
Surface Unit	
Manufacturer	- * -
Unit Class	Conventional
Unit API Number	- * -
Measured Stroke Length	- * - in
Rotation	CW
Counter Balance Effect (Weights Level)	- * - Klb
Weight Of Counter Weights	2000 lb
Prime Mover	
Motor Type	Electric
Rated HP	- * - HP
Run Time	24 hr/day
MFG/Comment	
	- * -
Electric Motor Parameters	
Rated Full Load AMPS	- * -
Rated Full Load RPM	- * -
Synchronous RPM	1200
Voltage	- * -
Hertz	60
Phase	3
Power Consumption	5
Power Demand	8 \$/KW

Tubulars							Pump	
Tubing OD	3.500	in	Plunger Diameter				- * -	in
Casing OD	7.000	in	Pump Intake Depth				- * -	ft
Average Joint Length	32.500	ft	**Total Rod Length > Pump Depth					
Anchor Depth	- * -	ft						
Kelly Bushing	20.00	ft						
Rod String							Polished Rod	
Polished Rod Diameter							- * -	in
	Top Taper	Taper 2	Taper 3	Taper 4	Taper 5	Taper 6		
Rod Type	- * -	- * -	- * -	- * -	- * -	- * -		
Rod Length	- * -	- * -	- * -	- * -	- * -	- * -	ft	
Rod Diameter	- * -	- * -	- * -	- * -	- * -	- * -	in	
Rod Weight	0.0	0.0	0.0	0.0	0.0	0.0	lb	
Total Rod Length	0							
Total Rod Weight	0.00							
Damp Up	0.05							
Damp Down	0.05							

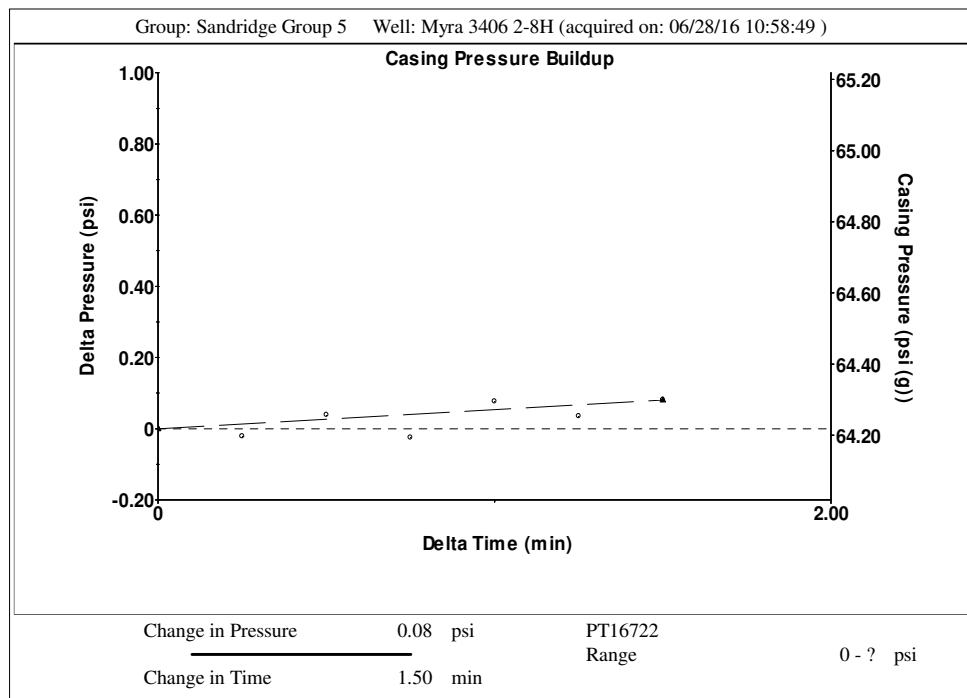
Conditions			
Pressure		Production	
Static BHP	878.0 psi (g)	Oil Production	- * - BBL/D
Static BHP Method	Acoustic	Water Production	- * - BBL/D
Static BHP Date	06/28/2016	Gas Production	- * - Mscf/D
		Production Date	- * -
Producing BHP	- * - psi (g)		
Producing BHP Method	Acoustic	Temperatures	
Producing BHP Date	06/21/2016	Surface Temperature	70 deg F
Formation Depth	5386.00 ft	Bottomhole Temperature	150 deg F
Surface Producing Pressures		Fluid Properties	
Tubing Pressure	50.0 psi (g)	Oil API	40 deg.API
Casing Pressure	64.2 psi (g)	Water Specific Gravity	1.05 Sp.Gr.H2O
Casing Pressure Buildup			
Change in Pressure	0.081 psi		
Over Change in Time	1.50 min		



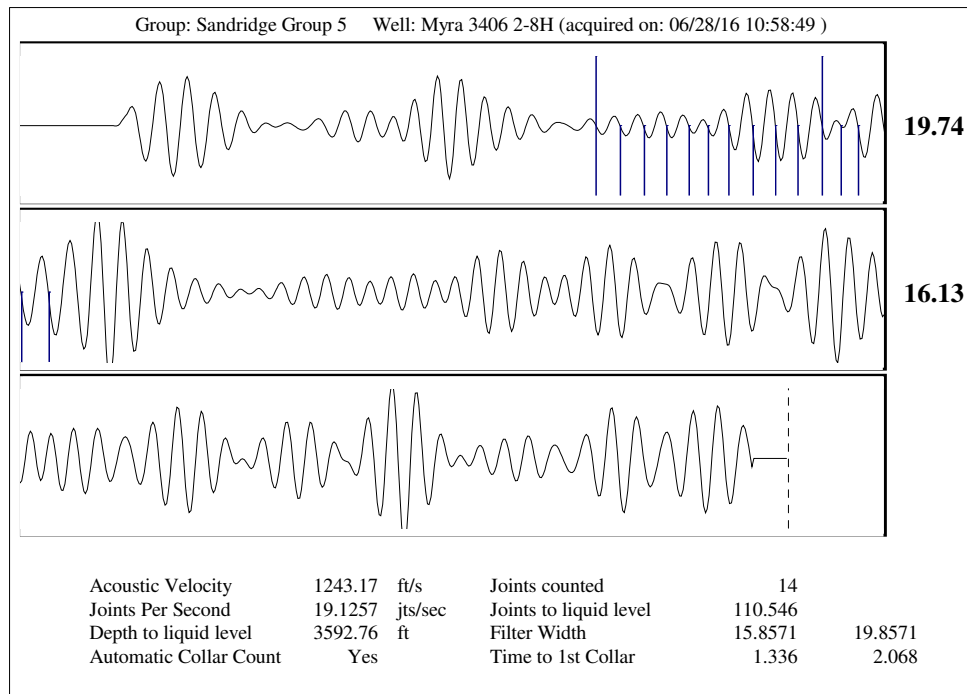
Filter Type High Pass Automatic Collar Count Yes Time 5.78 sec
Manual Acoustic Veloc 1160.71 ft/s Manual JTS/sec 17.8571 Joints 110.546 Jts
Depth 3592.76 ft



Analysis Method: Automatic



Group: Sandridge Group 5 Well: Myra 3406 2-8H (acquired on: 06/28/16 10:58:49)			
Production		Potential	
Current			
Oil - *	- *	BBL/D	
Water - *	- *	BBL/D	
Gas - *	- *	Mscf/D	
IPR Method		Vogel	
PBHP/SBHP		- *	
Production Efficiency		0.0	
Oil 40	deg.API		
Water 1.05	Sp.Gr.H2O		
Gas 0.74	Sp.Gr.AIR		
Acoustic Velocity		1243.17	ft/s
		Formation Depth	5386.00 ft
		Liquid Level Depth	3592.76 ft
		Tubing Intake Depth	- * - ft
		Gas/Liquid Interface Pressure	71.8 psi (g)
		Casing Pressure	64.2 psi (g)
		Casing Pressure Buildup	0.081 psi
			1.50 min
		Static	
		Oil Column Height	MD 0 ft
		Water Column Height	MD 1773 ft
		Static BHP	878.0 psi (g)
Myra 3406 2-8H			



Conservation Division
District Office No. 2
3450 N. Rock Road
Building 600, Suite 601
Wichita, KS 67226



Phone: 316-630-4000
Fax: 316-630-4005
<http://kcc.ks.gov/>

Jay Scott Emler, Chairman
Shari Feist Albrecht, Commissioner
Pat Apple, Commissioner

Sam Brownback, Governor

August 05, 2016

Wanda Ledbetter
SandRidge Exploration and Production LLC
123 ROBERT S. KERR AVE
OKLAHOMA CITY, OK 73102-6406

Re: Temporary Abandonment
API 15-077-21942-01-00
Myra 3406 2-8H
SW/4 Sec.08-34S-06W
Harper County, Kansas

Dear Wanda Ledbetter:

"Your temporary abandonment (TA) application for the well listed above has been approved. In accordance with K.A.R. 82-3-111 the TA status of this well will expire 08/05/2017.

- * If you return this well to service or plug it, please notify the District Office.
- * If you sell this well you are required to file a Transfer of Operator form, T-1.
- * If the well will remain temporarily abandoned, you must submit a new TA application, CP-111, before 08/05/2017.

You may contact me at the number above if you have questions.

Very truly yours,

Steve VanGieson"