



TEMPORARY ABANDONMENT WELL APPLICATION

All blanks must be complete

OPERATOR: License# _____
 Name: _____
 Address 1: _____
 Address 2: _____
 City: _____ State: _____ Zip: _____ + _____
 Contact Person: _____
 Phone: (_____) _____
 Contact Person Email: _____
 Field Contact Person: _____
 Field Contact Person Phone: (_____) _____

API No. 15- _____
 Spot Description: _____
 _____ - _____ - _____ - _____ Sec. _____ Twp. _____ S. R. _____ E W
 _____ feet from N / S Line of Section
 _____ feet from E / W Line of Section
 GPS Location: Lat: _____, Long: _____
(e.g. xx.xxxxx) (e.g. -xxx.xxxxx)
 Datum: NAD27 NAD83 WGS84
 County: _____ Elevation: _____ GL KB
 Lease Name: _____ Well #: _____
 Well Type: (check one) Oil Gas OG WSW Other: _____
 SWD Permit #: _____ ENHR Permit #: _____
 Gas Storage Permit #: _____
 Spud Date: _____ Date Shut-In: _____

	Conductor	Surface	Production	Intermediate	Liner	Tubing
Size						
Setting Depth						
Amount of Cement						
Top of Cement						
Bottom of Cement						

Casing Fluid Level from Surface: _____ How Determined? _____ Date: _____

Casing Squeeze(s): _____ to _____ w / _____ sacks of cement, _____ to _____ w / _____ sacks of cement. Date: _____
(top) (bottom) (top) (bottom)

Do you have a valid Oil & Gas Lease? Yes No

Depth and Type: Junk in Hole at _____ Tools in Hole at _____ Casing Leaks: Yes No Depth of casing leak(s): _____
(depth) (depth)

Type Completion: ALT. I ALT. II Depth of: DV Tool: _____ w / _____ sacks of cement Port Collar: _____ w / _____ sack of cement
(depth) (depth)

Packer Type: _____ Size: _____ Inch Set at: _____ Feet

Total Depth: _____ Plug Back Depth: _____ Plug Back Method: _____

Geological Data:

Formation Name	Formation Top	Formation Base	Completion Information
1. _____	At: _____	to _____ Feet	Perforation Interval _____ to _____ Feet or Open Hole Interval _____ to _____ Feet
2. _____	At: _____	to _____ Feet	Perforation Interval _____ to _____ Feet or Open Hole Interval _____ to _____ Feet

UNDER PENALTY OF PERJURY I HEREBY ATTEST THAT THE INFORMATION CONTAINED HEREIN IS TRUE AND CORRECT TO THE BEST OF MY KNOWLEDGE

Submitted Electronically

Do NOT Write in This Space - KCC USE ONLY	Date Tested: _____	Results: _____	Date Plugged: _____	Date Repaired: _____	Date Put Back in Service: _____
	Review Completed by: _____ Comments: _____				
TA Approved: <input type="checkbox"/> Yes <input type="checkbox"/> Denied Date: _____					

Mail to the Appropriate KCC Conservation Office:

	KCC District Office #1 - 210 E. Frontview, Suite A, Dodge City, KS 67801	Phone 620.225.8888
	KCC District Office #2 / UPGS - 3450 N. Rock Road, Building 600, Suite 601, Wichita, KS 67226	Phone 316.630.4000
	KCC District Office #3 - 1500 SW Seventh Steet, Chanute, KS 66720	Phone 620.432.2300
	KCC District Office #4 - 2301 E. 13th Street, Hays, KS 67601-2651	Phone 785.625.0550

General

Well ID - * -
 Well Jennie 3510 2-10H
 Company Sandridge
 Operator - * -
 Lease Name Jennie 3510 2-10H
 Elevation 1297.00 ft
 Production Method Other
 Dataset Description
 Second Shot

Comment

Surface Unit

Manufacturer - * -
 Unit Class Conventional
 Unit API Number - * -
 Measured Stroke Length - * - in
 Rotation CW
 Counter Balance Effect (Weights Level) - * - Klb
 Weight Of Counter Weights 2000 lb

Prime Mover

Motor Type Electric
 Rated HP - * - HP
 Run Time 24 hr/day
 MFG/Comment - * -

Electric Motor Parameters

Rated Full Load AMPS - * -
 Rated Full Load RPM - * -
 Synchronous RPM 1200
 Voltage - * -
 Hertz 60
 Phase 3
 Power Consumption 5
 Power Demand 8 \$/KW

Tubulars

Tubing OD 2.875 in
 Casing OD 7.000 in
 Average Joint Length 31.700 ft
 Anchor Depth - * - ft
 Kelly Bushing 20.00 ft

Pump

Plunger Diameter - * - in
 Pump Intake Depth - * - ft
 **Total Rod Length > Pump Depth

Polished Rod

Polished Rod Diameter - * - in

Rod String

	Top Taper	Taper 2	Taper 3	Taper 4	Taper 5	Taper 6
Rod Type	- * -	- * -	- * -	- * -	- * -	- * -
Rod Length	- * -	- * -	- * -	- * -	- * -	- * - ft
Rod Diameter	- * -	- * -	- * -	- * -	- * -	- * - in
Rod Weight	0.0	0.0	0.0	0.0	0.0	0.0 lb

Total Rod Length 0
 Total Rod Weight 0.00

Damp Up 0.05
 Damp Down 0.05

Conditions

Pressure

Static BHP 733.4 psi (g)
 Static BHP Method Acoustic
 Static BHP Date 06/28/2016

Producing BHP - * - psi (g)
 Producing BHP Method - * -
 Producing BHP Date - * -
 Formation Depth 5390.00 ft

Surface Producing Pressures

Tubing Pressure 0.0 psi (g)
 Casing Pressure 324.6 psi (g)

Casing Pressure Buildup

Change in Pressure -0.076 psi
 Over Change in Time 1.00 min

Production

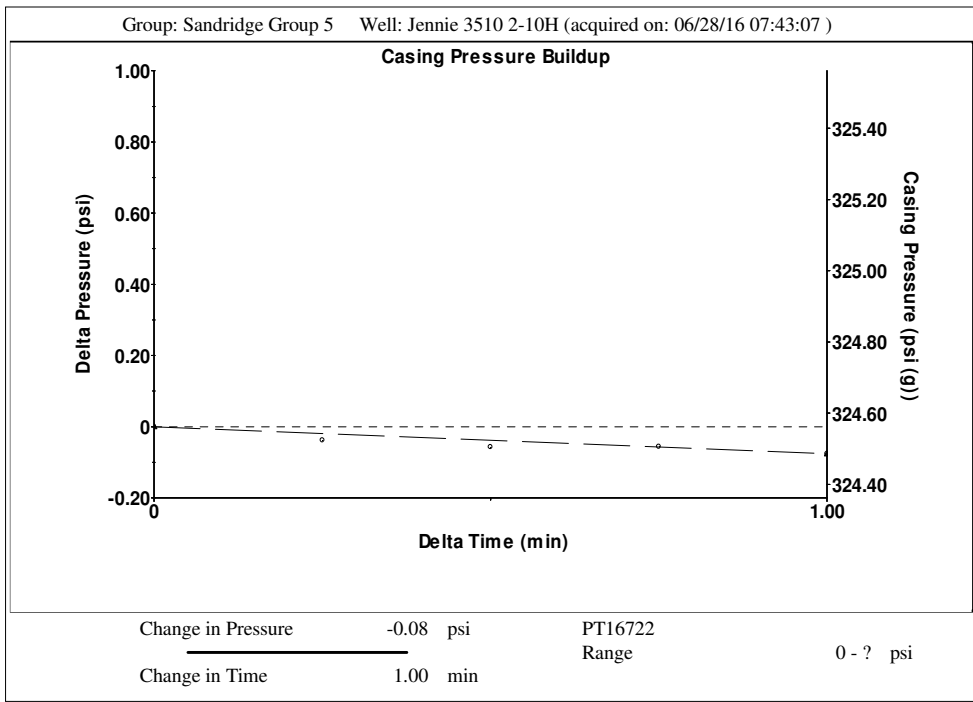
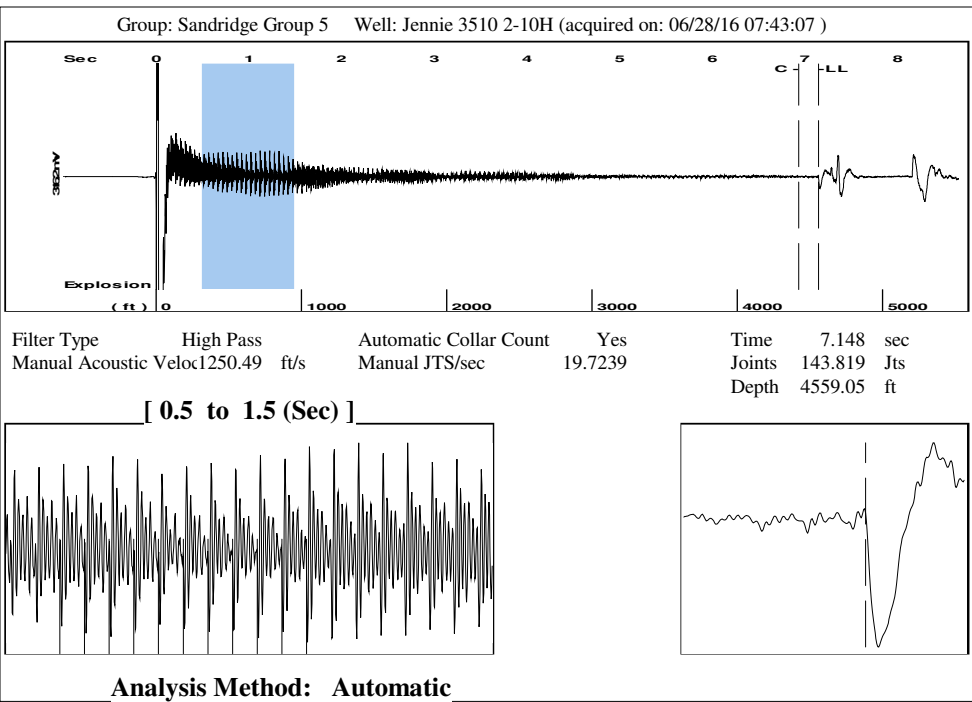
Oil Production - * - BBL/D
 Water Production - * - BBL/D
 Gas Production - * - Mscf/D
 Production Date - * -

Temperatures

Surface Temperature 70 deg F
 Bottomhole Temperature 150 deg F

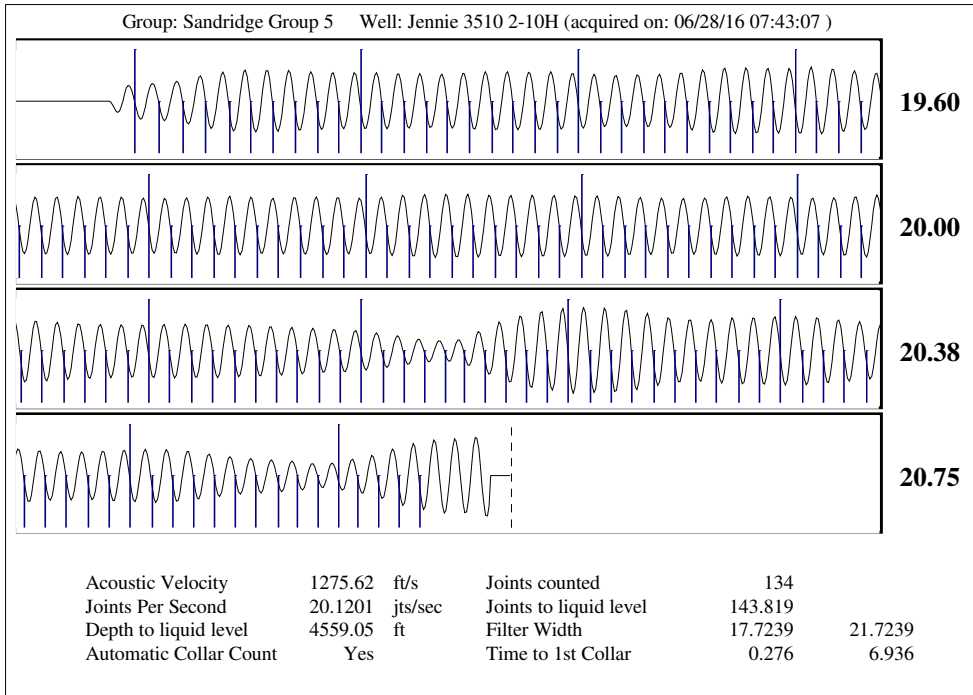
Fluid Properties

Oil API 40 deg.API
 Water Specific Gravity 1.05 Sp.Gr.H2O



Group: Sandridge Group 5 Well: Jennie 3510 2-10H (acquired on: 06/28/16 07:43:07)

Production		Casing Pressure	Static
Current	Potential	324.6 psi (g)	
Oil - *	- * - BBL/D	Casing Pressure Buildup	Oil Column Height
Water - *	- * - BBL/D	-0.076 psi	MD 0 ft
Gas - *	- * - Mscf/D	1.00 min	
IPR Method		Gas/Liquid Interface Pressure	Water Column Height
PBHP/SBHP	Vogel	364.7 psi (g)	MD 811 ft
Production Efficiency	- * -	Liquid Level Depth	
	0.0	4559.05 ft	
Oil 40 deg.API		Tubing Intake Depth	
Water 1.05 Sp.Gr.H2O		- * - ft	
Gas 0.69 Sp.Gr.AIR		Formation Depth	
Acoustic Velocity	1275.62 ft/s	5390.00 ft	
Jennie 3510 2-10H		Static BHP	733.4 psi (g)



Conservation Division
District Office No. 1
210 E. Frontview, Suite A
Dodge City, KS 67801



Phone: 620-225-8888
Fax: 620-225-8885
<http://kcc.ks.gov/>

Jay Scott Emler, Chairman
Shari Feist Albrecht, Commissioner
Pat Apple, Commissioner

Sam Brownback, Governor

July 26, 2016

Wanda Ledbetter
SandRidge Exploration and Production LLC
123 ROBERT S. KERR AVE
OKLAHOMA CITY, OK 73102-6406

Re: Temporary Abandonment
API 15-007-23919-01-00
Jennie 3510 2-10H
NE/4 Sec.10-35S-10W
Barber County, Kansas

Dear Wanda Ledbetter:

"Your temporary abandonment (TA) application for the well listed above has been approved. In accordance with K.A.R. 82-3-111 the TA status of this well will expire 07/26/2017.

- * If you return this well to service or plug it, please notify the District Office.
- * If you sell this well you are required to file a Transfer of Operator form, T-1.
- * If the well will remain temporarily abandoned, you must submit a new TA application, CP-111, before 07/26/2017.

You may contact me at the number above if you have questions.

Very truly yours,

Michael Maier"