



TEMPORARY ABANDONMENT WELL APPLICATION

OPERATOR: License# _____
 Name: _____
 Address 1: _____
 Address 2: _____
 City: _____ State: _____ Zip: _____ + _____
 Contact Person: _____
 Phone: (_____) _____
 Contact Person Email: _____
 Field Contact Person: _____
 Field Contact Person Phone: (_____) _____

API No. 15- _____
 Spot Description: _____
 _____ - _____ - _____ - _____ Sec. _____ Twp. _____ S. R. _____ E W
 _____ feet from N / S Line of Section
 _____ feet from E / W Line of Section
 GPS Location: Lat: _____, Long: _____
(e.g. xx.xxxxx) (e.g. -xxx.xxxxx)
 Datum: NAD27 NAD83 WGS84
 County: _____ Elevation: _____ GL KB
 Lease Name: _____ Well #: _____
 Well Type: (check one) Oil Gas OG WSW Other: _____
 SWD Permit #: _____ ENHR Permit #: _____
 Gas Storage Permit #: _____
 Spud Date: _____ Date Shut-In: _____

	Conductor	Surface	Production	Intermediate	Liner	Tubing
Size						
Setting Depth						
Amount of Cement						
Top of Cement						
Bottom of Cement						

Casing Fluid Level from Surface: _____ How Determined? _____ Date: _____

Casing Squeeze(s): _____ to _____ w / _____ sacks of cement, _____ to _____ w / _____ sacks of cement. Date: _____
(top) (bottom) (top) (bottom)

Do you have a valid Oil & Gas Lease? Yes No

Depth and Type: Junk in Hole at _____ Tools in Hole at _____ Casing Leaks: Yes No Depth of casing leak(s): _____
(depth) (depth)

Type Completion: ALT. I ALT. II Depth of: DV Tool: _____ w / _____ sacks of cement Port Collar: _____ w / _____ sack of cement
(depth) (depth)

Packer Type: _____ Size: _____ Inch Set at: _____ Feet

Total Depth: _____ Plug Back Depth: _____ Plug Back Method: _____

Geological Data:

Formation Name	Formation Top	Formation Base	Completion Information
1. _____	At: _____	to _____ Feet	Perforation Interval _____ to _____ Feet or Open Hole Interval _____ to _____ Feet
2. _____	At: _____	to _____ Feet	Perforation Interval _____ to _____ Feet or Open Hole Interval _____ to _____ Feet

~~UNDER PENALTY OF PERJURY I HEREBY ATTEST THAT THE INFORMATION CONTAINED HEREIN IS TRUE AND CORRECT TO THE BEST OF MY KNOWLEDGE~~

Submitted Electronically

Do NOT Write in This Space - KCC USE ONLY	Date Tested: _____	Results: _____	Date Plugged: _____	Date Repaired: _____	Date Put Back in Service: _____
	Review Completed by: _____ Comments: _____				
TA Approved: <input type="checkbox"/> Yes <input type="checkbox"/> Denied Date: _____					

Mail to the Appropriate KCC Conservation Office:

	KCC District Office #1 - 210 E. Frontview, Suite A, Dodge City, KS 67801	Phone 620.225.8888
	KCC District Office #2 / UPGS - 3450 N. Rock Road, Building 600, Suite 601, Wichita, KS 67226	Phone 316.630.4000
	KCC District Office #3 - 1500 SW Seventh Steet, Chanute, KS 66720	Phone 620.432.2300
	KCC District Office #4 - 2301 E. 13th Street, Hays, KS 67601-2651	Phone 785.625.0550

General

Well ID - * -
 Well JAMES113H
 Company AOS
 Operator SANDRIDGE ENERGY
 Lease Name JAMES 2922 #1-13H
 Elevation 0.00 ft
 Production Method Flowing Well (Gas)

Comment

Compressor

Power Rating - * - HP
 Capacity - * - Mscf/D
 Discharge Pressure - * - psi (g)
 Suction Pressure - * - psi (g)
 Compressor Manuf - * -
 Sales Line Pressure - * - psi (g)

Flow Line

Flow Line OD - * - in
 Flow Line ID - * - in
 Flow Line Length - * - ft
 Flow Line Material - * -
 Elevation Change - * - ft
 Inlet Pressure - * - psi (g)

Tubulars

Tubing		Casing	
OD	2.875 in	OD	7.000 in
Weight	lb/ft	Weight	lb/ft
ID	2.441 in	ID	6.538 in
Avg. Joint Length: 32.770 ft		KB Correction: 0.00 ft	
Anchor Depth: ft		SN Depth: ft	
Packer Depth: ft		Tubing Intake Depth: 5145.00 ft	
Tubing Roughness: 0.00005 New Pipe ft			

Conditions**Pressure**

Static BHP - * - psi (g)
 Static BHP Method - * -
 Static BHP Date - * -

Producing BHP 1476.4 psi (g)
 Producing BHP Method Acoustic
 Producing BHP Date 12/02/2013
 Formation Depth 5145.00 ft

Surface Producing Pressures

Tubing Pressure - * - psi (g)
 Casing Pressure 1269.3 psi (g)

Pressure Buildup

Change in Pressure 0.0 psi
 Over Change in Time 0.50 min

Production

Oil Production - * - BBL/D
 Water Production - * - BBL/D
 Gas Production - * - Mscf/D
 Production Date - * -

Temperatures

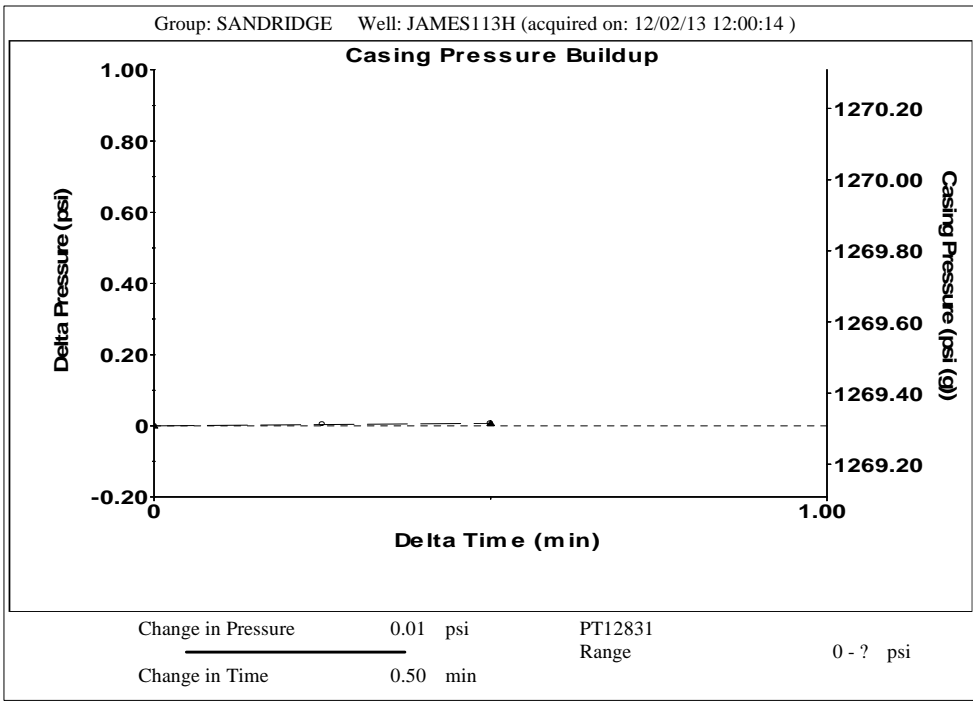
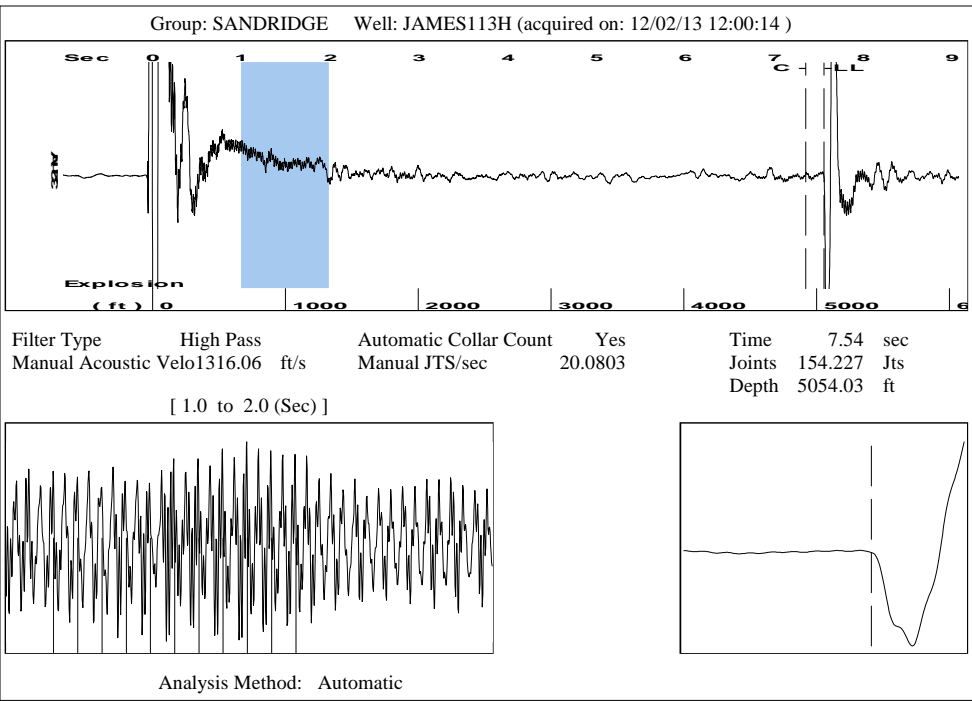
Surface Temperature 70 deg F
 Bottomhole Temperature 150 deg F

Standard Conditions

Standard Temp 60 deg F
 Standard Pressure 14.7 psi (a)

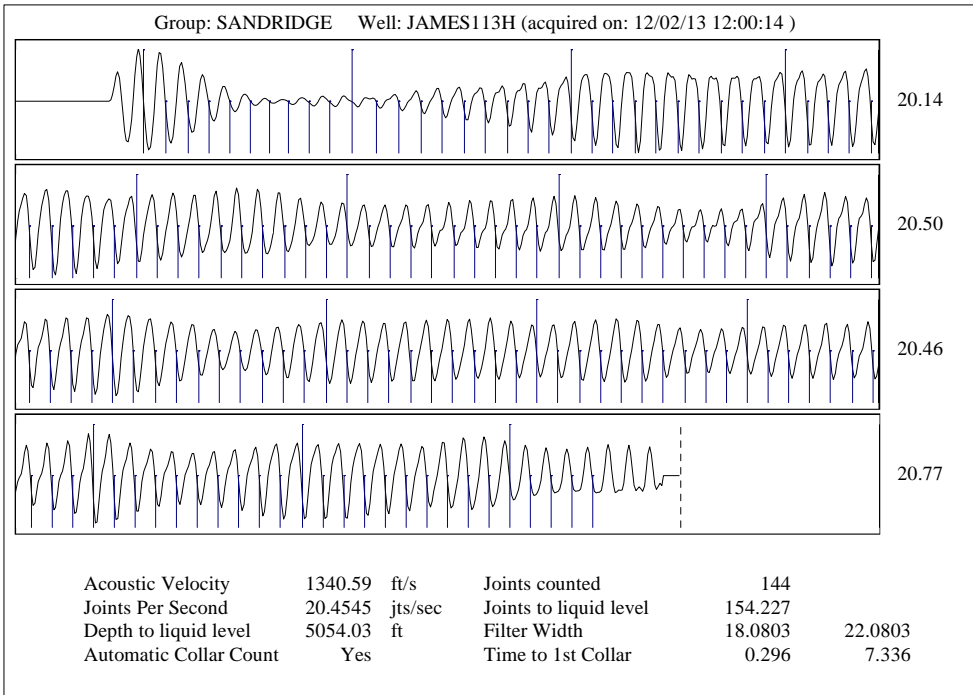
Fluid Properties

Oil API 40 deg API
 Water Specific Gravity 1.05 Sp.Gr.H2O



Group: SANDRIDGE Well: JAMES113H (acquired on: 12/02/13 12:00:14)

Production	Potential	Casing Pressure		Producing
Current	- * - BBL/D	1269.3 psi (g)		Annular
Oil - * -	- * - BBL/D	Casing Pressure Buildup		Gas Flow
Water - * -	- * - Mscf/D	0.0 psi		1 Mscf/D
Gas - * -		0.50 min	% Liquid	99 %
IPR Method	Vogel	Gas/Liquid Interface Pressure		
PBHP/SBHP	- * -	1435.6 psi (g)		
Production Efficiency	0.0			
Oil 40 deg.API		Liquid Level Depth		
Water 1.05 Sp.Gr.H2O		5054.03 ft		
Gas 0.62 Sp.Gr.AIR		Tubing Intake Depth		
Acoustic Velocity 1340.59 ft/s		5145.00 ft		
		Formation Depth		
		5145.00 ft		
Formation Submergence				
Total Gaseous Liquid Column HT (TVD)	91 ft			
Equivalent Gas Free Liquid HT (TVD)	90 ft			
Acoustic Test				
		Tubing Intake		
		1476.4 psi (g)		
		Producing BHP		
		1476.4 psi (g)		
		Static BHP		
		- * - psi (g)		



Conservation Division
District Office No. 1
210 E. Frontview, Suite A
Dodge City, KS 67801



Phone: 620-225-8888
Fax: 620-225-8885
<http://kcc.ks.gov/>

Jay Scott Emler, Chairman
Shari Feist Albrecht, Commissioner
Pat Apple, Commissioner

Sam Brownback, Governor

July 26, 2016

Wanda Ledbetter
SandRidge Exploration and Production LLC
123 ROBERT S. KERR AVE
OKLAHOMA CITY, OK 73102-6406

Re: Temporary Abandonment
API 15-057-20867-01-00
James 2922 1-13H
NW/4 Sec.24-29S-22W
Ford County, Kansas

Dear Wanda Ledbetter:

"Your temporary abandonment (TA) application for the well listed above has been approved. In accordance with K.A.R. 82-3-111 the TA status of this well will expire 07/26/2017.

- * If you return this well to service or plug it, please notify the District Office.
- * If you sell this well you are required to file a Transfer of Operator form, T-1.
- * If the well will remain temporarily abandoned, you must submit a new TA application, CP-111, before 07/26/2017.

You may contact me at the number above if you have questions.

Very truly yours,

Michael Maier"