



TEMPORARY ABANDONMENT WELL APPLICATION

All blanks must be complete

OPERATOR: License# _____
 Name: _____
 Address 1: _____
 Address 2: _____
 City: _____ State: _____ Zip: _____ + _____
 Contact Person: _____
 Phone:(_____) _____
 Contact Person Email: _____
 Field Contact Person: _____
 Field Contact Person Phone: (_____) _____

API No. 15- _____
 Spot Description: _____
 _____ - _____ - _____ - _____ Sec. _____ Twp. _____ S. R. _____ E W
 _____ feet from N / S Line of Section
 _____ feet from E / W Line of Section
 GPS Location: Lat: _____, Long: _____
(e.g. xx.xxxxx) (e.g. -xxx.xxxxx)
 Datum: NAD27 NAD83 WGS84
 County: _____ Elevation: _____ GL KB
 Lease Name: _____ Well #: _____
 Well Type: (check one) Oil Gas OG WSW Other: _____
 SWD Permit #: _____ ENHR Permit #: _____
 Gas Storage Permit #: _____
 Spud Date: _____ Date Shut-In: _____

	Conductor	Surface	Production	Intermediate	Liner	Tubing
Size						
Setting Depth						
Amount of Cement						
Top of Cement						
Bottom of Cement						

Casing Fluid Level from Surface: _____ How Determined? _____ Date: _____
 Casing Squeeze(s): _____ to _____ w / _____ sacks of cement, _____ to _____ w / _____ sacks of cement. Date: _____
(top) (bottom) (top) (bottom)
 Do you have a valid Oil & Gas Lease? Yes No
 Depth and Type: Junk in Hole at _____ Tools in Hole at _____ Casing Leaks: Yes No Depth of casing leak(s): _____
(depth) (depth)
 Type Completion: ALT. I ALT. II Depth of: DV Tool: _____ w / _____ sacks of cement Port Collar: _____ w / _____ sack of cement
(depth) (depth)
 Packer Type: _____ Size: _____ Inch Set at: _____ Feet
 Total Depth: _____ Plug Back Depth: _____ Plug Back Method: _____

Geological Data:

Formation Name	Formation Top	Formation Base	Completion Information
1. _____	At: _____	to _____ Feet	Perforation Interval _____ to _____ Feet or Open Hole Interval _____ to _____ Feet
2. _____	At: _____	to _____ Feet	Perforation Interval _____ to _____ Feet or Open Hole Interval _____ to _____ Feet

UNDER PENALTY OF PERJURY I HEREBY ATTEST THAT THE INFORMATION CONTAINED HEREIN IS TRUE AND CORRECT TO THE BEST OF MY KNOWLEDGE

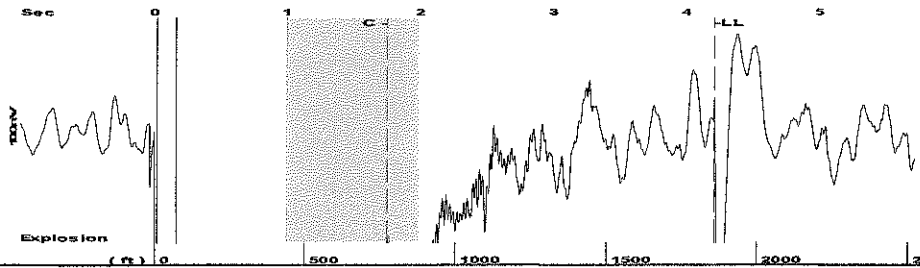
Submitted Electronically

Do NOT Write in This Space - KCC USE ONLY	Date Tested: _____	Results: _____	Date Plugged: _____	Date Repaired: _____	Date Put Back in Service: _____
	Review Completed by: _____ Comments: _____				
TA Approved: <input type="checkbox"/> Yes <input type="checkbox"/> Denied Date: _____					

Mail to the Appropriate KCC Conservation Office:

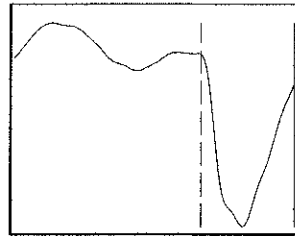
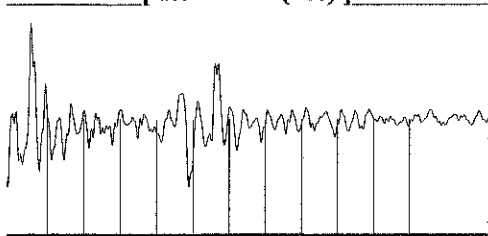
	KCC District Office #1 - 210 E. Frontview, Suite A, Dodge City, KS 67801	Phone 620.225.8888
	KCC District Office #2 / UPGS - 3450 N. Rock Road, Building 600, Suite 601, Wichita, KS 67226	Phone 316.630.4000
	KCC District Office #3 - 1500 SW Seventh Steet, Chanute, KS 66720	Phone 620.432.2300
	KCC District Office #4 - 2301 E. 13th Street, Hays, KS 67601-2651	Phone 785.625.0550

Group: MyWells Well: Smith-MJ # 1 (acquired on: 07/11/16 08:34:22)



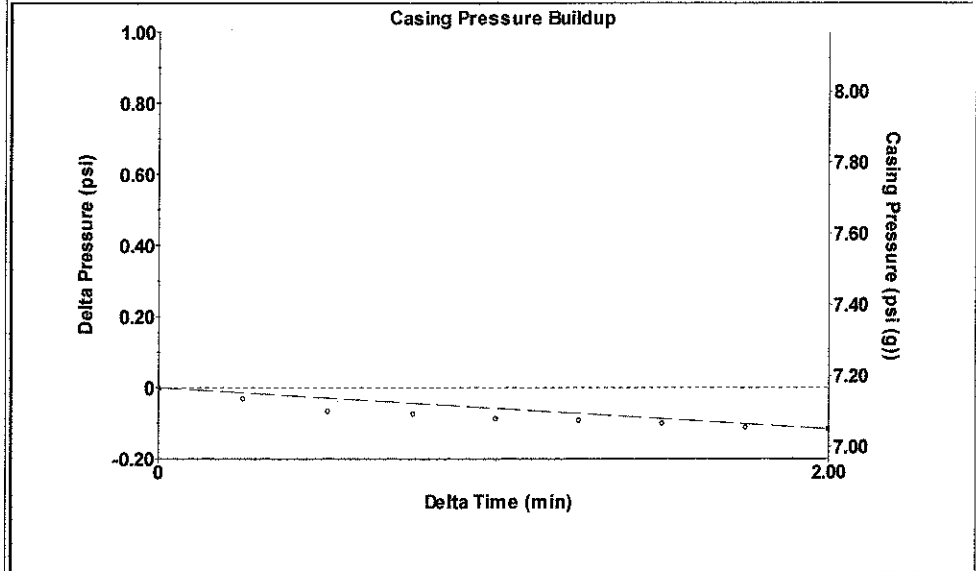
Filter Type High Pass Automatic Collar Count Yes Time 4.211 sec
 Manual Acoustic Veloc 862.55 ft/s Manual JTS/sec 13.4228 Joints 57.8434 Jts
 Depth 1858.51 ft

[1.0 to 2.0 (Sec)]



Analysis Method: Automatic

Group: MyWells Well: Smith-MJ # 1 (acquired on: 07/11/16 08:34:22)



Change in Pressure -0.12 psi PT12865
 Change in Time 2.00 min Range 0 - ? psi

Group: MyWells Well: Smith-MJ # 1 (acquired on: 07/11/16 08:34:22)

Production
 Current Potential
 Oil - * - * - BBL/D
 Water - * - * - BBL/D
 Gas - * - * - Mscf/D

IPR Method Vogel
 PBHP/SBHP - * -
 Production Efficiency 0.0

Oil 40 deg.API
 Water 1.05 Sp.Gr.H2O
 Gas 1.09 Sp.Gr.AIR

Acoustic Velocity 882.692 ft/s

Casing Pressure 7.2 psi (g)
 Casing Pressure Buildup -0.116 psi
 2.00 min
 Gas/Liquid Interface Pressure 8.7 psi (g)

Liquid Level Depth 1858.51 ft

Pump Intake Depth 2760.00 ft

Formation Depth 2760.00 ft

Producing
 Annular Gas Flow 0 Mscf/D
 % Liquid 100 %

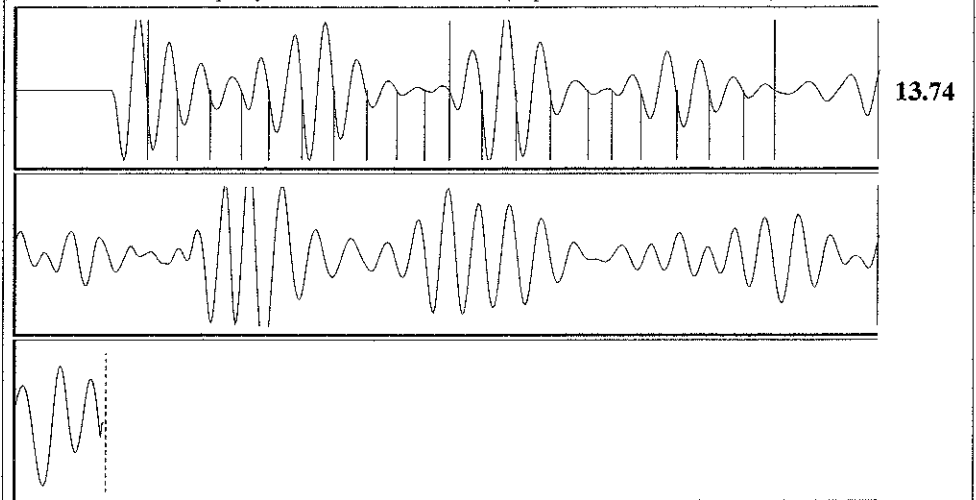
Pump Intake 315.7 psi (g)
 Producing BHP 315.7 psi (g)
 Static BHP - * - psi (g)

Formation Submergence
 Total Gaseous Liquid Column HT (TVD) 901 ft
 Equivalent Gas Free Liquid HT (TVD) 901 ft

Acoustic Test



Group: MyWells Well: Smith-MJ # 1 (acquired on: 07/11/16 08:34:22)



Acoustic Velocity 882.692 ft/s Joints counted 20
 Joints Per Second 13.7363 jts/sec Joints to liquid level 57.8434
 Depth to liquid level 1858.51 ft Filter Width 11.4228 15.4228
 Automatic Collar Count Yes Time to 1st Collar 0.3 1.756

Conservation Division
District Office No. 1
210 E. Frontview, Suite A
Dodge City, KS 67801



Phone: 620-225-8888
Fax: 620-225-8885
<http://kcc.ks.gov/>

Jay Scott Emler, Chairman
Shari Feist Albrecht, Commissioner
Pat Apple, Commissioner

Sam Brownback, Governor

July 26, 2016

Lori Zehr
Oil Producers Inc. of Kansas
1710 WATERFRONT PKWY
WICHITA, KS 67206-6603

Re: Temporary Abandonment
API 15-055-00266-00-00
PRUSS-SMITH 1
NW/4 Sec.35-22S-32W
Finney County, Kansas

Dear Lori Zehr:

"Your temporary abandonment (TA) application for the well listed above has been approved. In accordance with K.A.R. 82-3-111 the TA status of this well will expire 07/26/2017.

- * If you return this well to service or plug it, please notify the District Office.
- * If you sell this well you are required to file a Transfer of Operator form, T-1.
- * If the well will remain temporarily abandoned, you must submit a new TA application, CP-111, before 07/26/2017.

You may contact me at the number above if you have questions.

Very truly yours,

Michael Maier"