



## TEMPORARY ABANDONMENT WELL APPLICATION

OPERATOR: License# \_\_\_\_\_  
 Name: \_\_\_\_\_  
 Address 1: \_\_\_\_\_  
 Address 2: \_\_\_\_\_  
 City: \_\_\_\_\_ State: \_\_\_\_\_ Zip: \_\_\_\_\_ + \_\_\_\_\_  
 Contact Person: \_\_\_\_\_  
 Phone: (\_\_\_\_\_) \_\_\_\_\_  
 Contact Person Email: \_\_\_\_\_  
 Field Contact Person: \_\_\_\_\_  
 Field Contact Person Phone: (\_\_\_\_\_) \_\_\_\_\_

API No. 15- \_\_\_\_\_  
 Spot Description: \_\_\_\_\_  
 \_\_\_\_\_ - \_\_\_\_\_ - \_\_\_\_\_ - \_\_\_\_\_ Sec. \_\_\_\_\_ Twp. \_\_\_\_\_ S. R. \_\_\_\_\_  E  W  
 \_\_\_\_\_ feet from  N /  S Line of Section  
 \_\_\_\_\_ feet from  E /  W Line of Section  
 GPS Location: Lat: \_\_\_\_\_, Long: \_\_\_\_\_  
(e.g. xx.xxxxx) (e.g. -xxx.xxxxx)  
 Datum:  NAD27  NAD83  WGS84  
 County: \_\_\_\_\_ Elevation: \_\_\_\_\_  GL  KB  
 Lease Name: \_\_\_\_\_ Well #: \_\_\_\_\_  
 Well Type: (check one)  Oil  Gas  OG  WSW  Other: \_\_\_\_\_  
 SWD Permit #: \_\_\_\_\_  ENHR Permit #: \_\_\_\_\_  
 Gas Storage Permit #: \_\_\_\_\_  
 Spud Date: \_\_\_\_\_ Date Shut-In: \_\_\_\_\_

	Conductor	Surface	Production	Intermediate	Liner	Tubing
Size						
Setting Depth						
Amount of Cement						
Top of Cement						
Bottom of Cement						

Casing Fluid Level from Surface: \_\_\_\_\_ How Determined? \_\_\_\_\_ Date: \_\_\_\_\_

Casing Squeeze(s): \_\_\_\_\_ to \_\_\_\_\_ w / \_\_\_\_\_ sacks of cement, \_\_\_\_\_ to \_\_\_\_\_ w / \_\_\_\_\_ sacks of cement. Date: \_\_\_\_\_  
(top) (bottom) (top) (bottom)

Do you have a valid Oil & Gas Lease?  Yes  No

Depth and Type:  Junk in Hole at \_\_\_\_\_  Tools in Hole at \_\_\_\_\_ Casing Leaks:  Yes  No Depth of casing leak(s): \_\_\_\_\_  
(depth) (depth)

Type Completion:  ALT. I  ALT. II Depth of:  DV Tool: \_\_\_\_\_ w / \_\_\_\_\_ sacks of cement  Port Collar: \_\_\_\_\_ w / \_\_\_\_\_ sack of cement  
(depth) (depth)

Packer Type: \_\_\_\_\_ Size: \_\_\_\_\_ Inch Set at: \_\_\_\_\_ Feet

Total Depth: \_\_\_\_\_ Plug Back Depth: \_\_\_\_\_ Plug Back Method: \_\_\_\_\_

**Geological Data:**

Formation Name	Formation Top	Formation Base	Completion Information
1. _____	At: _____	to _____ Feet	Perforation Interval _____ to _____ Feet or Open Hole Interval _____ to _____ Feet
2. _____	At: _____	to _____ Feet	Perforation Interval _____ to _____ Feet or Open Hole Interval _____ to _____ Feet

~~UNDER PENALTY OF PERJURY I HEREBY ATTEST THAT THE INFORMATION CONTAINED HEREIN IS TRUE AND CORRECT TO THE BEST OF MY KNOWLEDGE~~

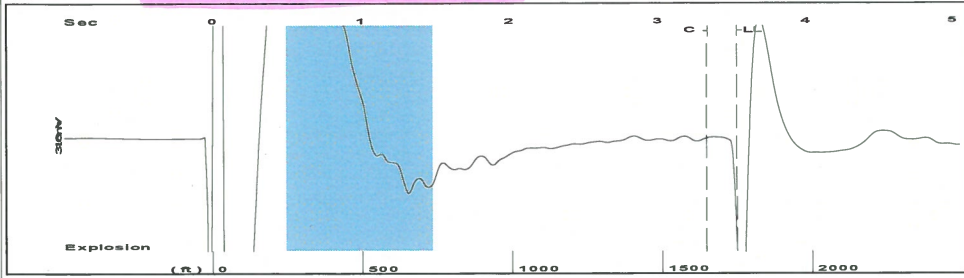
Submitted Electronically

<b>Do NOT Write in This Space - KCC USE ONLY</b>	Date Tested: _____	Results: _____	Date Plugged: _____	Date Repaired: _____	Date Put Back in Service: _____
	Review Completed by: _____ Comments: _____				
TA Approved: <input type="checkbox"/> Yes <input type="checkbox"/> Denied Date: _____					

**Mail to the Appropriate KCC Conservation Office:**

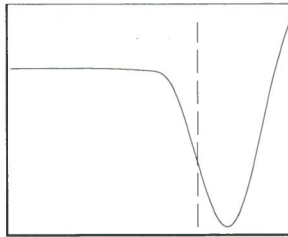
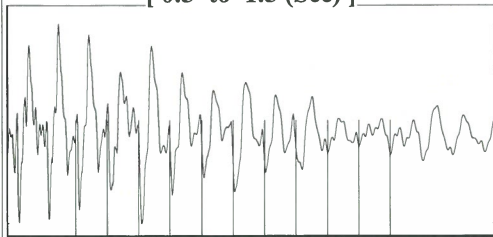
	KCC District Office #1 - 210 E. Frontview, Suite A, Dodge City, KS 67801	Phone 620.225.8888
	KCC District Office #2 / UPGS - 3450 N. Rock Road, Building 600, Suite 601, Wichita, KS 67226	Phone 316.630.4000
	KCC District Office #3 - 1500 SW Seventh Steet, Chanute, KS 66720	Phone 620.432.2300
	KCC District Office #4 - 2301 E. 13th Street, Hays, KS 67601-2651	Phone 785.625.0550

Group: TA'D WELLS Well: SQUIRE A-1 (acquired on: 02/11/16 12:39:44)



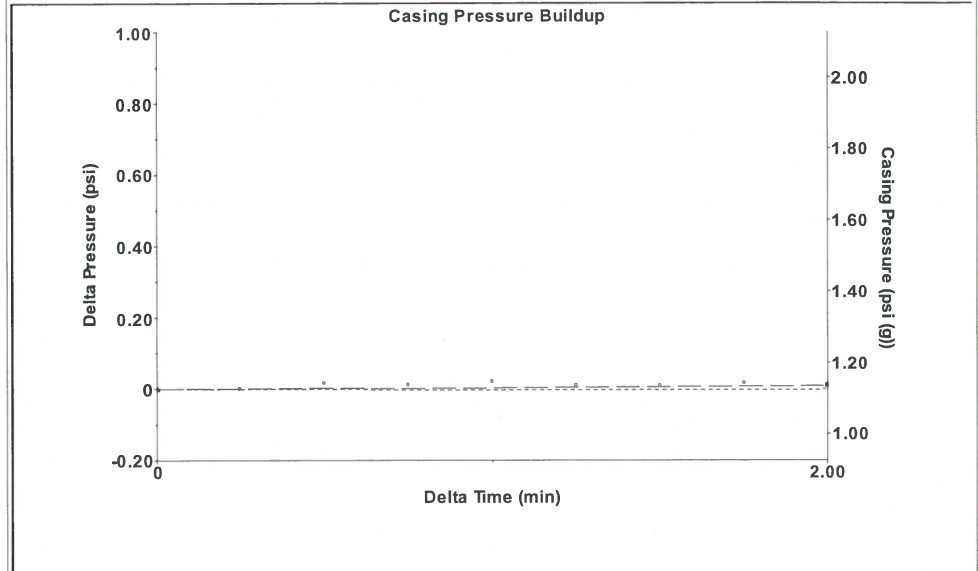
Filter Type High Pass Automatic Collar Count Yes Time 3.543 sec  
 Manual Acoustic Velo 981.424 ft/s Manual JTS/sec 15.4799 Joints 55.144 Jts  
 Depth 1748.06 ft

[ 0.5 to 1.5 (Sec) ]



Analysis Method: Automatic

Group: TA'D WELLS Well: SQUIRE A-1 (acquired on: 02/11/16 12:39:44)



Change in Pressure 0.01 psi PT10857  
 Change in Time 2.00 min Range 0 - ? psi

Group: TA'D WELLS Well: SQUIRE A-1 (acquired on: 02/11/16 12:39:44)

Production  
 Current Potential  
 Oil - \* - \* - BBL/D  
 Water - \* - \* - BBL/D  
 Gas - \* - \* - Mscf/D

IPR Method Vogel  
 PBHP/SBHP - \* -  
 Production Efficiency 0.0

Oil 40 deg.API  
 Water 1.05 Sp.Gr.H2O  
 Gas 0.98 Sp.Gr.AIR

Acoustic Velocity 986.77 ft/s

Formation Submergence  
 Total Gaseous Liquid Column HT (TVD) 4083 ft  
 Equivalent Gas Free Liquid HT (TVD) 4083 ft

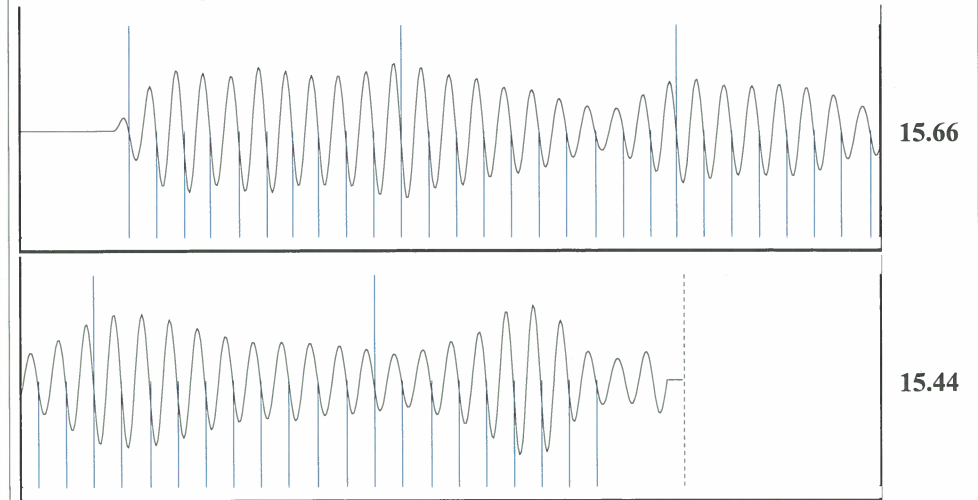
Acoustic Test

Casing Pressure 1.1 psi (g)  
 Casing Pressure Buildup 0.0 psi  
 2.00 min  
 Gas/Liquid Interface Pressure 2.1 psi (g)  
 Liquid Level Depth 1748.06 ft  
 Pump Intake Depth 5831.00 ft  
 Formation Depth 6310.00 ft



Producing  
 Annular Gas Flow 0 Mscf/D  
 % Liquid 100 %  
 Pump Intake 1310.8 psi (g)  
 Producing BHP 1528.6 psi (g)  
 Static BHP - \* - psi (g)

Group: TA'D WELLS Well: SQUIRE A-1 (acquired on: 02/11/16 12:39:44)



Acoustic Velocity 986.77 ft/s Joints counted 48  
 Joints Per Second 15.5642 jts/sec Joints to liquid level 55.144  
 Depth to liquid level 1748.06 ft Filter Width 13.4799 17.4799  
 Automatic Collar Count Yes Time to 1st Collar 0.252 3.336

Conservation Division  
District Office No. 1  
210 E. Frontview, Suite A  
Dodge City, KS 67801



Phone: 620-225-8888  
Fax: 620-225-8885  
<http://kcc.ks.gov/>

Jay Scott Emler, Chairman  
Shari Feist Albrecht, Commissioner  
Pat Apple, Commissioner

Sam Brownback, Governor

August 02, 2016

Katherine McClurkan  
Merit Energy Company, LLC  
13727 Noel Road, Suite 1200  
Dallas, TX 75240

Re: Temporary Abandonment  
API 15-189-21780-00-00  
Squire A 1  
SW/4 Sec.12-33S-38W  
Stevens County, Kansas

Dear Katherine McClurkan:

"Your temporary abandonment (TA) application for the well listed above has been approved. In accordance with K.A.R. 82-3-111 the TA status of this well will expire 08/02/2017.

- \* If you return this well to service or plug it, please notify the District Office.
- \* If you sell this well you are required to file a Transfer of Operator form, T-1.
- \* If the well will remain temporarily abandoned, you must submit a new TA application, CP-111, before 08/02/2017.

You may contact me at the number above if you have questions.

Very truly yours,

Michael Maier"