



TEMPORARY ABANDONMENT WELL APPLICATION

All blanks must be complete

OPERATOR: License# _____
Name: _____
Address 1: _____
Address 2: _____
City: _____ State: _____ Zip: _____ + _____
Contact Person: _____
Phone:(_____) _____
Contact Person Email: _____
Field Contact Person: _____
Field Contact Person Phone: (_____) _____

API No. 15- _____
Spot Description: _____
____ - ____ - ____ - ____ Sec. _____ Twp. _____ S. R. _____ E W
_____ feet from N / S Line of Section
_____ feet from E / W Line of Section
GPS Location: Lat: _____, Long: _____
(e.g. xx.xxxxx) (e.g. -xxx.xxxxx)
Datum: NAD27 NAD83 WGS84
County: _____ Elevation: _____ GL KB
Lease Name: _____ Well #: _____
Well Type: (check one) Oil Gas OG WSW Other: _____
 SWD Permit #: _____ ENHR Permit #: _____
 Gas Storage Permit #: _____
Spud Date: _____ Date Shut-In: _____

	Conductor	Surface	Production	Intermediate	Liner	Tubing
Size						
Setting Depth						
Amount of Cement						
Top of Cement						
Bottom of Cement						

Casing Fluid Level from Surface: _____ How Determined? _____ Date: _____
Casing Squeeze(s): _____ to _____ w / _____ sacks of cement, _____ to _____ w / _____ sacks of cement. Date: _____
(top) (bottom) (top) (bottom)
Do you have a valid Oil & Gas Lease? Yes No
Depth and Type: Junk in Hole at _____ (depth) Tools in Hole at _____ (depth) Casing Leaks: Yes No Depth of casing leak(s): _____
Type Completion: ALT. I ALT. II Depth of: DV Tool: _____ w / _____ sacks of cement Port Collar: _____ w / _____ sack of cement
(depth) (depth)
Packer Type: _____ Size: _____ Inch Set at: _____ Feet
Total Depth: _____ Plug Back Depth: _____ Plug Back Method: _____

Geological Data:

Formation Name	Formation Top	Formation Base	Completion Information
1. _____	At: _____	to _____ Feet	Perforation Interval _____ to _____ Feet or Open Hole Interval _____ to _____ Feet
2. _____	At: _____	to _____ Feet	Perforation Interval _____ to _____ Feet or Open Hole Interval _____ to _____ Feet

UNDER PENALTY OF PERJURY I HEREBY ATTEST THAT THE INFORMATION CONTAINED HEREIN IS TRUE AND CORRECT TO THE BEST OF MY KNOWLEDGE

Submitted Electronically

Do NOT Write in This Space - KCC USE ONLY

Date Tested: _____ Results: _____ Date Plugged: _____ Date Repaired: _____ Date Put Back in Service: _____

Review Completed by: _____ Comments: _____

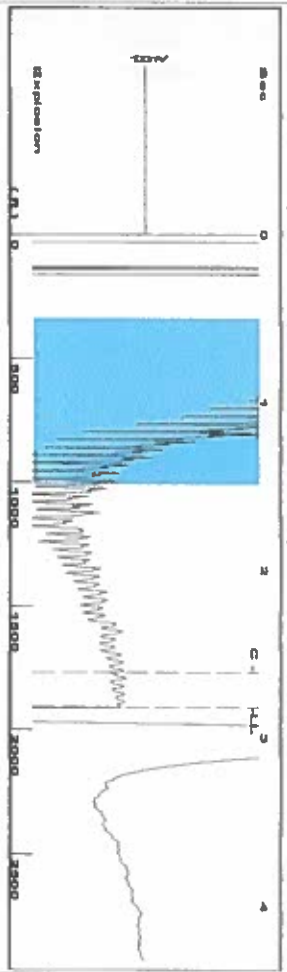
TA Approved: Yes Denied Date: _____

Mail to the Appropriate KCC Conservation Office:

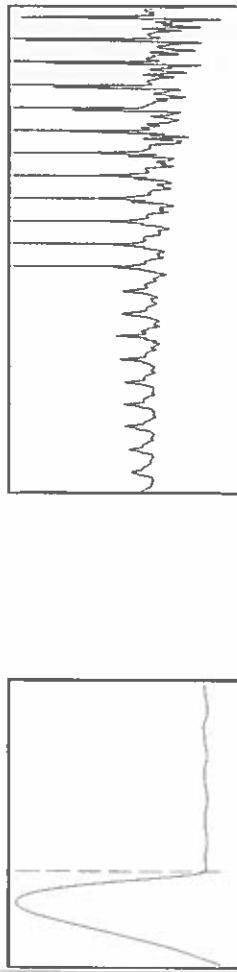
	KCC District Office #1 - 210 E. Frontview, Suite A, Dodge City, KS 67801	Phone 620.225.8888
	KCC District Office #2 / UPGS - 3450 N. Rock Road, Building 600, Suite 601, Wichita, KS 67226	Phone 316.630.4000
	KCC District Office #3 - 1500 SW Seventh Steet, Chanute, KS 66720	Phone 620.432.2300
	KCC District Office #4 - 2301 E. 13th Street, Hays, KS 67601-2651	Phone 785.625.0550

LLD 1909' *Ops: tubing* *4.5 psi casing*

Group: Liberal Rt 1 Well: R J Fischer 2 (acquired on: 08/26/16 09:47:12)



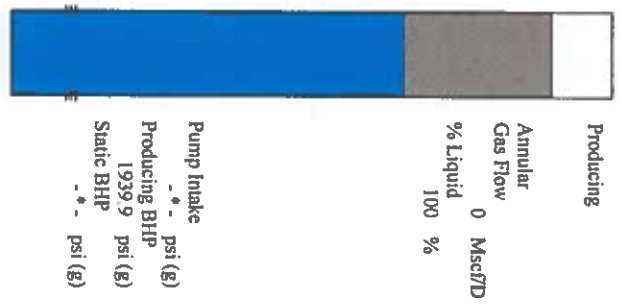
Filter Type High Pass Automatic Collar Count Yes
 Manual Acoustic Veloc 1357.6 ft/s Manual JTS/sec 21.4133
 Time 2.818 sec
 Joints 60.2137 J/s
 Depth 1908.77 ft



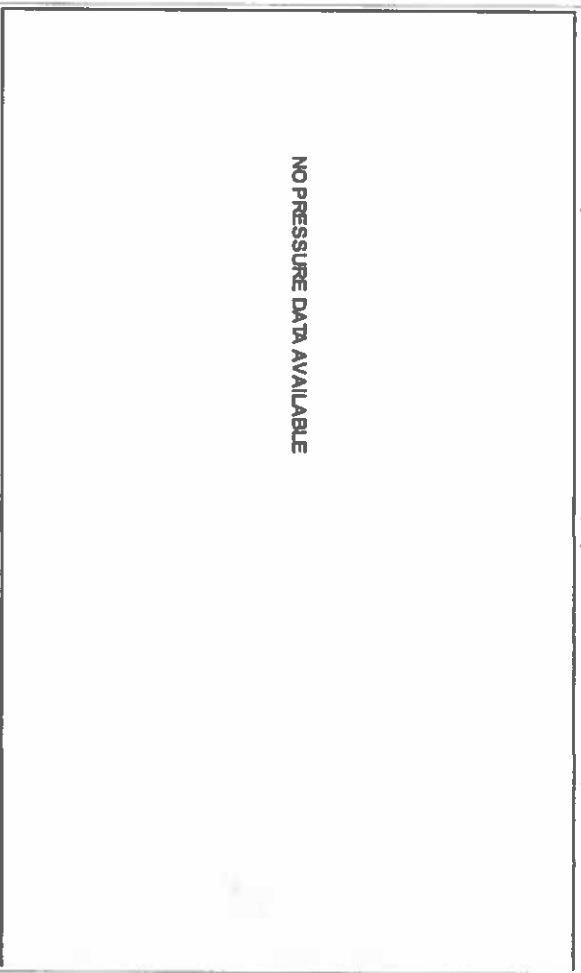
Analysis Method: Automatic

Group: Liberal Rt 1 Well: R J Fischer 2 (acquired on: 08/26/16 09:47:12)

Production Current	Potential	Casing Pressure	Producing
Oil - - -	- - - BBL/D	-14.7 psi (g)	Annular Gas Flow 0 Mscf/D
Water - - -	- - - BBL/D	- - - psi	% Liquid 100 %
Gas - - -	- - - Mscf/D	- - - min	
IPR Method	Vogel - - -	Gas/Liquid Interface Pressure	
PBHP/SBHP	Production Efficiency 0.0	-14.7 psi (g)	
Oil 40 deg API	Liquid Level Depth		
Water 1.05 Sp.Gr.H2O	1908.77 ft		
Gas 0.70 Sp.Gr.AIR	Pump Intake Depth		
Acoustic Velocity 1354.7 ft/s	Formation Depth		
	6208.00 ft		

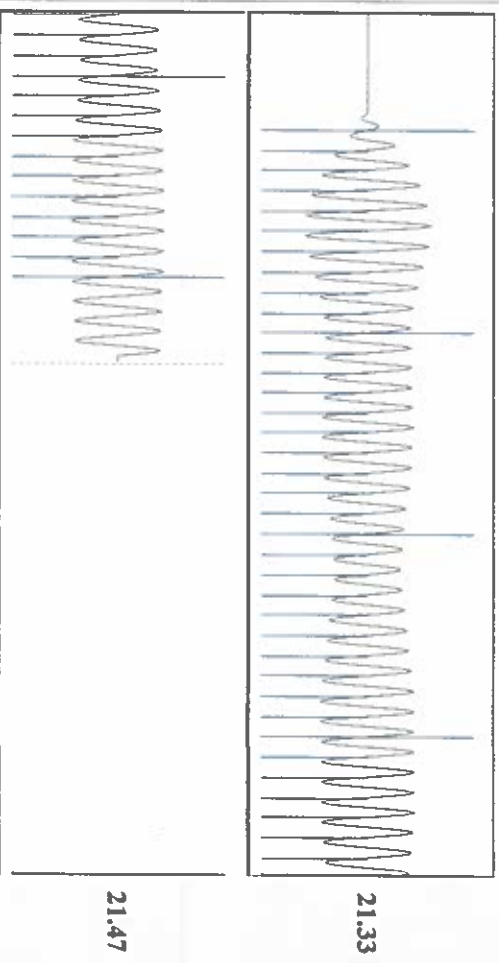


Group: Liberal Rt 1 Well: R J Fischer 2 (acquired on: 08/26/16 09:47:12)



Change in Pressure 0.00 psi PT 11249
 Change in Time 0.00 min Range 0 - ? psi

Group: Liberal Rt 1 Well: R J Fischer 2 (acquired on: 08/26/16 09:47:12)



Acoustic Velocity	1354.7 ft/s	Joints counted	50
Joints Per Second	21.3675 J/s/Sec	Joints to liquid level	60.2137
Depth to liquid level	1908.77 ft	Filter Width	19.4133
Automatic Collar Count	Yes	Time to 1st Collar	0.272

Conservation Division
District Office No. 1
210 E. Frontview, Suite A
Dodge City, KS 67801



Phone: 620-225-8888
Fax: 620-225-8885
<http://kcc.ks.gov/>

Jay Scott Emler, Chairman
Shari Feist Albrecht, Commissioner
Pat Apple, Commissioner

Sam Brownback, Governor

August 30, 2016

Katherine McClurkan
Merit Energy Company, LLC
13727 Noel Road, Suite 1200
Dallas, TX 75240

Re: Temporary Abandonment
API 15-189-21514-00-00
R J Fisher 2
SW/4 Sec.04-35S-35W
Stevens County, Kansas

Dear Katherine McClurkan:

"Your temporary abandonment (TA) application for the well listed above has been approved. In accordance with K.A.R. 82-3-111 the TA status of this well will expire 08/30/2017.

- * If you return this well to service or plug it, please notify the District Office.
- * If you sell this well you are required to file a Transfer of Operator form, T-1.
- * If the well will remain temporarily abandoned, you must submit a new TA application, CP-111, before 08/30/2017.

You may contact me at the number above if you have questions.

Very truly yours,

Michael Maier"