



Scale 1:240 (5"=100') Imperial
Measured Depth Log

Well Name: Arnold #2
Location: 6-29S-40W
License Number: API: 15-187-21326
Spud Date: 04/28/16
Surface Coordinates: 1285' FSL, 2240' FEL

Region: Stanton Co., KS
Drilling Completed: 05/05/16

Bottom Hole
Coordinates:
Ground Elevation (ft): 3314 K.B. Elevation (ft): 3325
Logged Interval (ft): 4200 To: 5650 Total Depth (ft): 5650
Formation: Mississippian
Type of Drilling Fluid: Chemical

Printed by MUD.LOG from WellSight Systems 1-800-447-1534 www.WellSight.com

OPERATOR

Company: White Exploration, Inc.
Address: 1635 N. Waterfront Pkwy.
St. 100
Wichita, KS 67206

GEOLOGIST

Name: Andrew White
Company: White Exploration, Inc.
Address:

Remarks

Due to log evaluation, production casing will be run on the Arnold #2. During logging, a bridge was encountered at 5631.

General Info

Drilling Contractor: Murfin Rig 21

Logs: CJ Cased Hole Solutions
Compensated Density/Neutron, Dual, Micro, Sonic

Drilling Mud: Mudco/Service Mud, Inc.

DST: None Taken

Surveys: 673'-.75, 1034'-.75, 2268' .25, 3062'-.5, 3660' .25, 4196'-.5, 4666'-.5, 5650'-.75

Daily Status

4/28/16: Spud Well @ 5:30 P.M.

4/29/16: Drilling ahead @673'

4/30/16: Drilling Surface hole @1330', set 41 jts 8-5/8" 24# Casing @ 1726', 595 sacks 65/35 w/ 6% gel and 3%CC and 1/4# sack Pheno-seal, 200 sacks common w/ 2%CC and 1/4# sack Pheno-seal

5/1/16: top off with 125 sacks Common Cement

5/2/16: Drilling ahead @ 2542'

5/3/16: Drilling ahead @ 3846'

5/4/16: Drilling ahead @ 4774'

5/5/16: Drilling ahead @ 5592'

5/6/16: Laying down drill pipe to run production casing, Set 5-1/2" 15.5# Production Casing @ 5649' and Cemented with 260 sacks of cement, DV tool @ 3226', cemented with 415 sacks of cement

White Ex				White		Berexco	
Arnold #2				Arnold #1		RA 1-6	
6-29S-40W				6-29S-41W		6-29S-40W	
1285' FSL, 2240' FEL				490'FSL, 1515' FEL		800' FSL, 2975' FEL	
KB: 3325				KB: 3322			
Sample	Log	Datum		Relationship		Relationship	
Heebner		3685	-360	+11		+9	
Lansing		3754	-429	+32		+8	
Cherokee	4546	4535	-1210	+15		+4	
Morrow	5028	5010	-1685	+14		+6	
LMM	5330	5334	-2009	+10		+5	
Miss	5530	5526	-2201	+35		+26	

ROCK TYPES

LITHOLOGY

- Anhy
- Bent
- Brec
- Cht
- Clyst
- Coal
- Congl

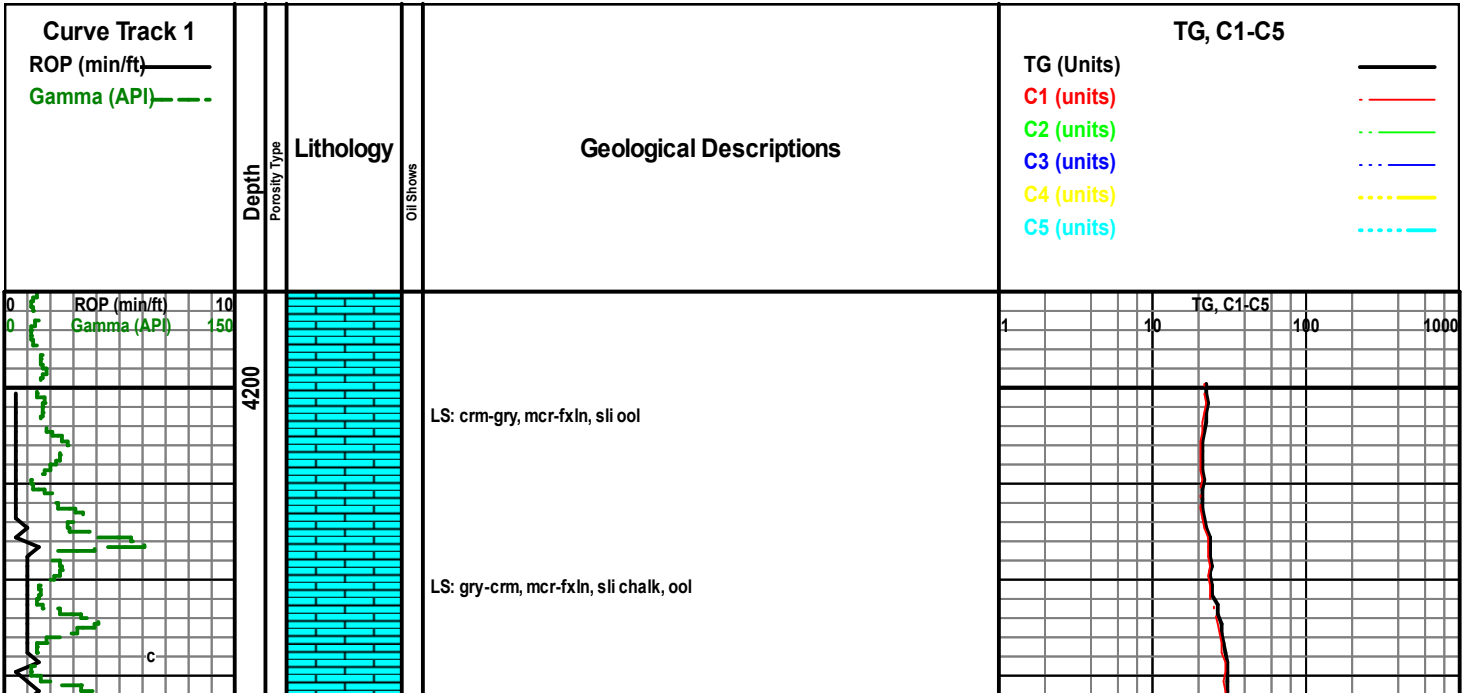
- Dol
- Gyp
- Igne
- Lmst
- Meta
- Mrlst
- Salt
- Shale

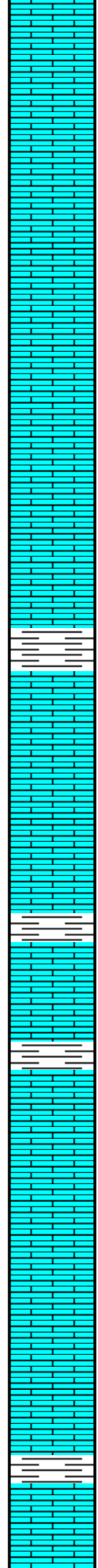
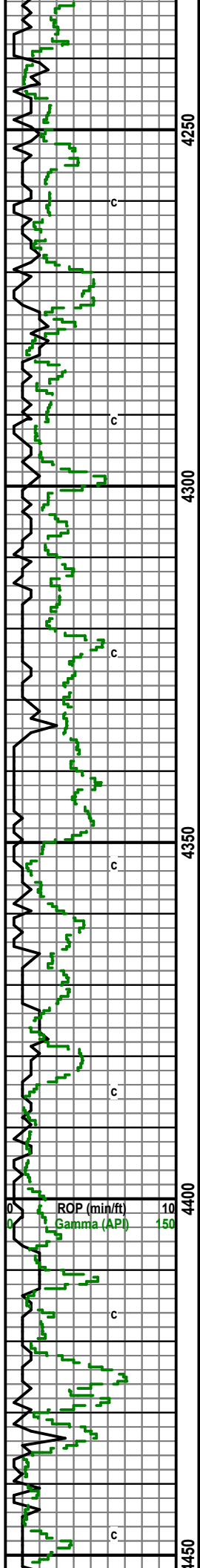
- Shcol
- Shgy
- Sltst
- Ss
- Till

- STRINGER**
- Anhy

- Arg
- Bent
- Coal
- Dol
- Gyp
- Ls
- Mrst
- Sltstrg

- OIL SHOW**
- Even
 - Spotted
 - Ques
 - Dead





LS: A.A.

LS: gry, sli crm, mcrxln, sli chalk, some ool

LS: A.A.

LS: gry, mcrxln, sli ool

LS: gry, sli tan-crm, mcrxln, some fxln, Sh: gry-drk gry

LS: A.A.

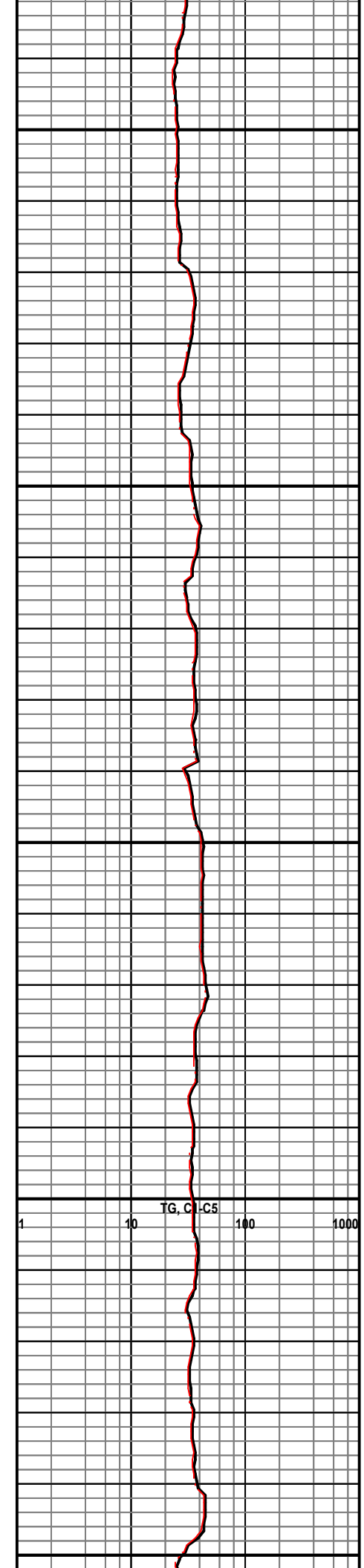
LS: gry-crm, mcrxln, sli fxln, chalk, some Sh: gry-lt gry

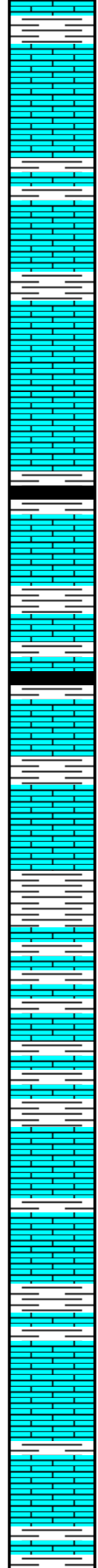
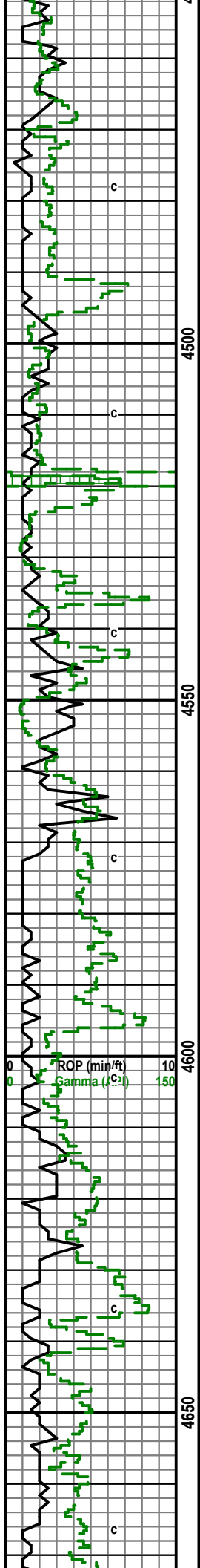
LS: A.A., Sh: A.A.

LS: crm-sli gry, mcrxln, sli fos

LS: crm-sli gry, mcrxln, few fxln, couple ool, sli fox, sli chalky

LS: A.A. with some Sh: gry





LS: crm-gry, mcrxln, sli fxln, some ool, sli fos, Sh: A.A.

LS: gry, sli crm, mcrxln, Sh: gry-drk gry

LS: and Sh: A.A.

LS: gry, sli crm, mcrxln, some Sh: gry, few blk

LS: gry-crm, mcrxln, sli chalk, some Sh: blk-drk gry

LS: and Sh: A.A.

Sh: gry w/ some LS: crm-sli tan, mcr-fxln, sli chalk

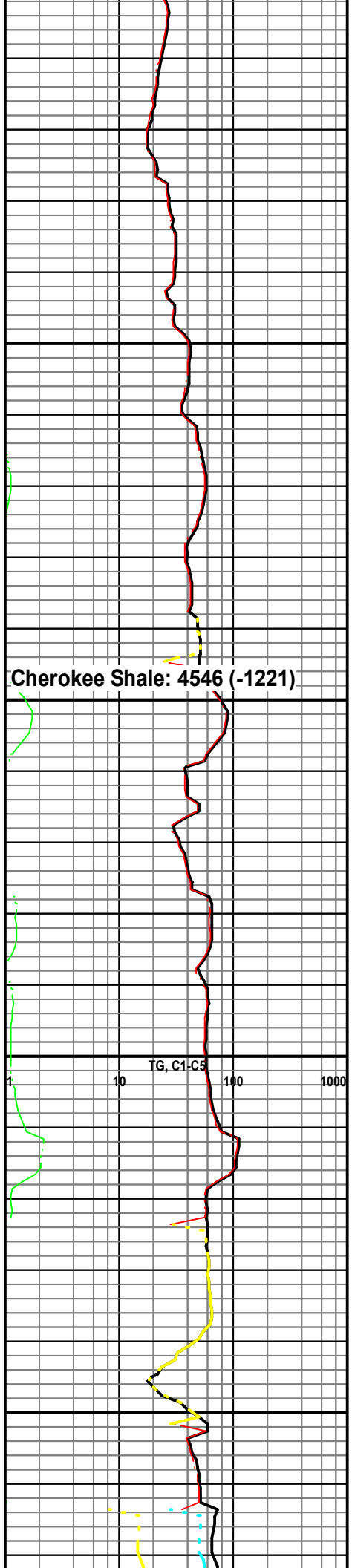
Sh: A.A., some LS: A.A.

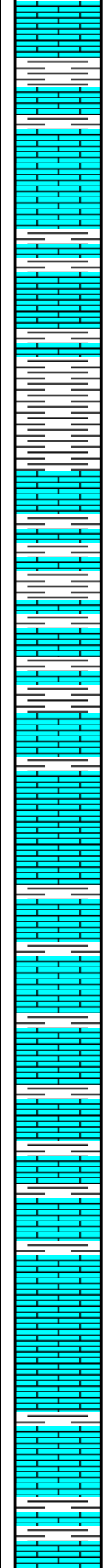
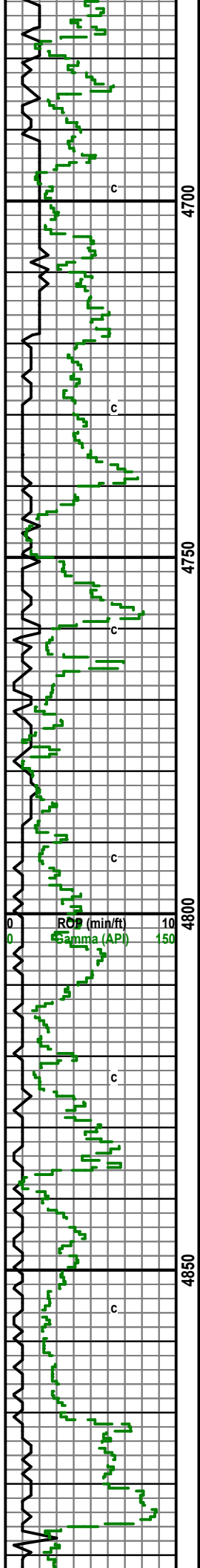
LS: crm-gry, mcrxln, Sh: gry,

Sh: gry-drk gry, LS: crm-gry, mcrxln, sli fxln

LS: A.A. w/ Sh: A.A.

Cherokee Shale: 4546 (-1221)





Sh: gry-drk gry, some LS: crm, fxln

LS: crm-sli tan, mcr-fxln, Sh: gry-drk gry

Sh: gry-drk gry, w/ some LS: A.A.

Sh: gry-drk gry-lt gry, some LS: gry, sli crm, f-mcrxln, sli fos

Sh: and LS: A.A.

Sh: gry-lt gry, some drk gry, LS: gry-sli crm, mcr-fxln

LS: gry-crm, mcrxln, some fxln, sli chalky, some Sh: gry-drk gry

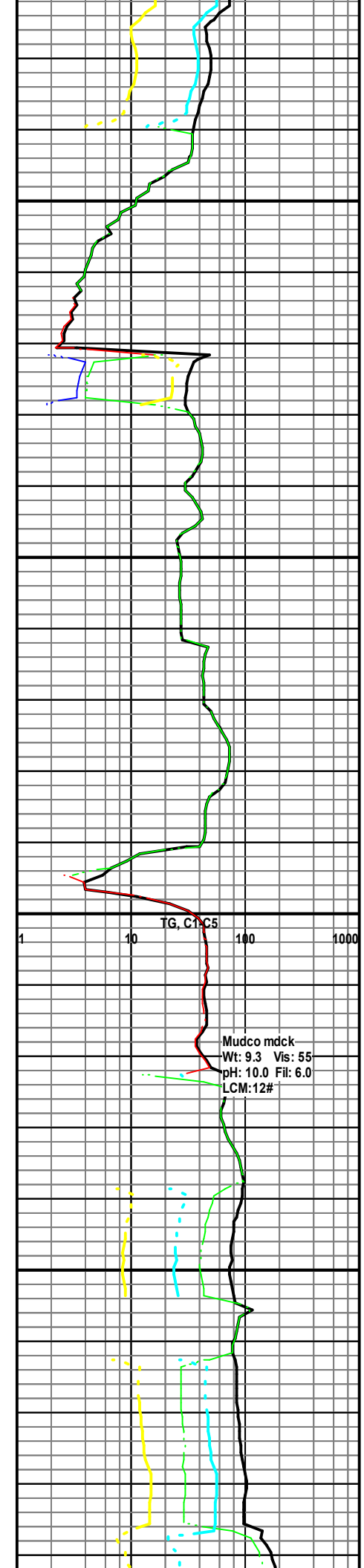
LS: gry-crm, sli tan, mcrxln, few fxln, Sh: A.A.

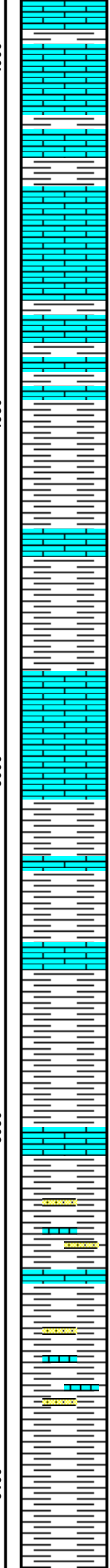
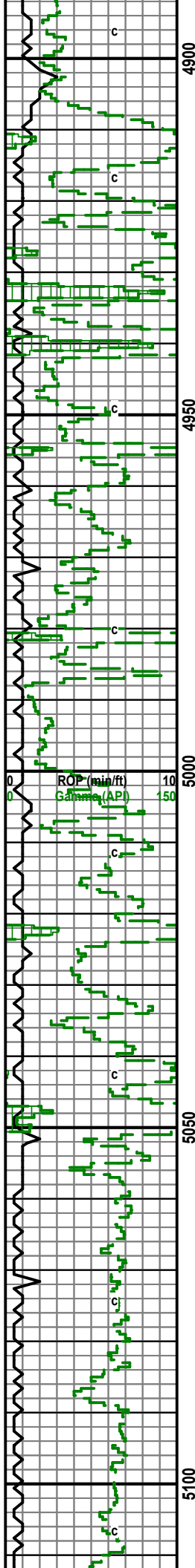
LS: crm-gry, mcrxln, sli chalky, Sh: A.A.

LS: A.A.

LS: gry, sli crm, mcrxln, few fxln, Sh: gry

LS: and Sh: A.A.





LS: crm-gry, mcrxln, some fxln, Sh: gry

LS: gry, sli crm, mcr-fxln, sli fos, Sh: gry-lt gry

LS: and Sh: A.A.

LS: gry, sli crm, mcrxln, Sh: gry-lt gry

A.A.

A.A.

LS: crm-gry, mcrxln, Sh: gry-drk gry-lt gry, some blk

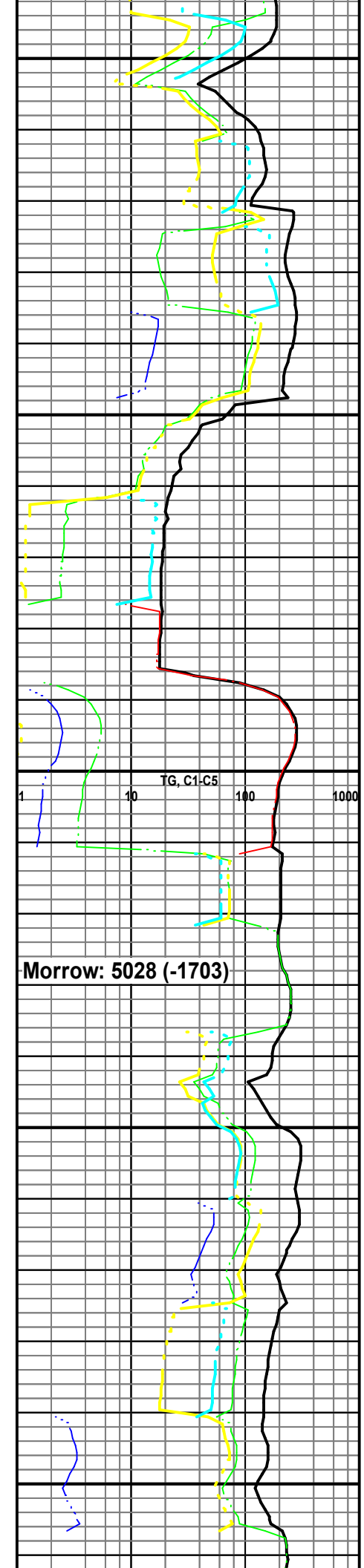
Sh: gry-drk gry, some lt gry, some LS: gry, mcrxln

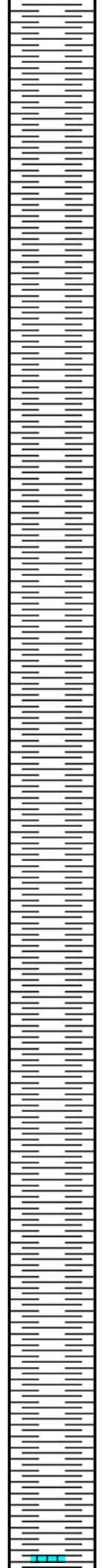
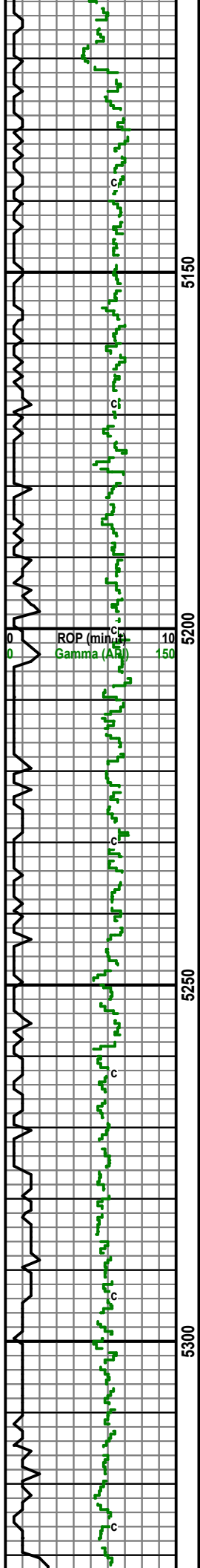
Sh: gry-drk gry-lt gry, some LS: A.A.

Sh: A.A., some LS: A.A. a few clusters of SS: clear, vf-fgm, sub md, calc mtrx, NS

Sh: gry-drk gry some lt gry, few pieces LS: gry, sli crm, mcrxln, some SS: A.A.

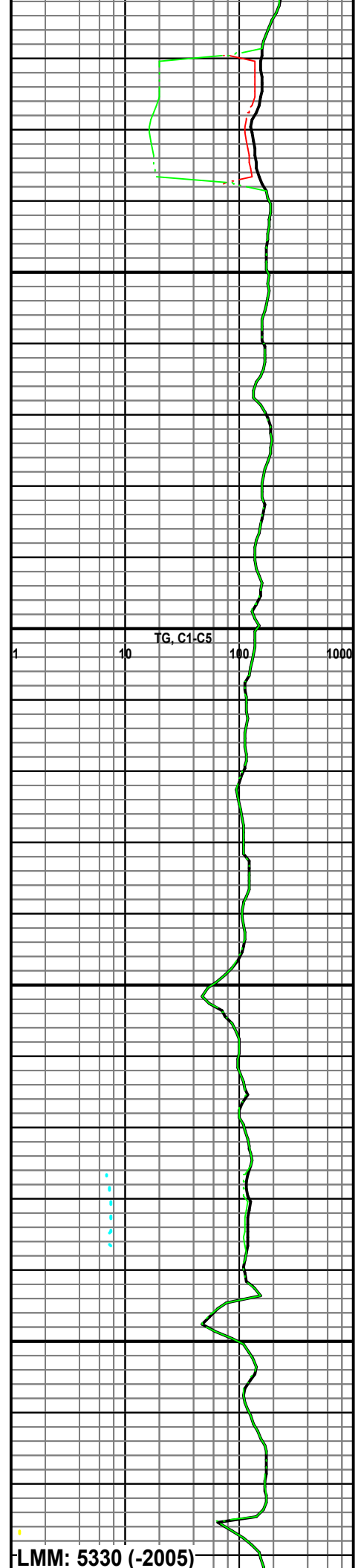
Sh: gry-drk gry



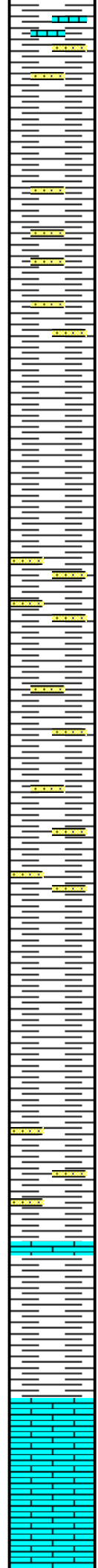
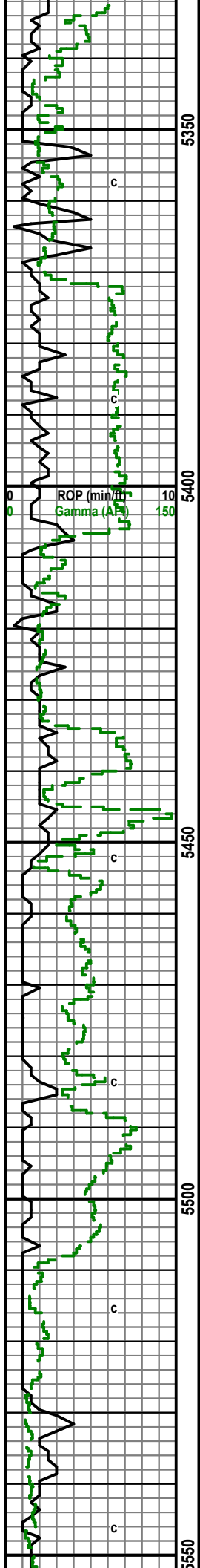


Sh: A.A.
Sh: A.A.
Sh: A.A.
Sh: A.A.
Sh: A.A.
Sh: A.A.
Sh: A.A.
Sh: A.A.

Sh: A.A. with few pieces, LS: cm, mcrIn, few pieces sandy



LMM: 5330 (-2005)



Sh: gry-drk gry, some SS: clr, vf-fgrn, sub md, slii glauc, some LS: A.A.

A.A.

Sample 80% Sh, some SS: fgrn, few coarse, pr sort, sub-well rounded, dense, calc cem

Sh: gry-drk gry, some SS: A.A.

Sh: drk gry-gry

Sh: A.A. with some SS: f-vf grn, few mgrn, clr-gry, calc, no vis por, sli fri, pr sort, sub md, no fluor, NSO

Sample A.A., pr sample quality

Mostly Sh: gry-drk gry, few pieces SS: A.A.

Mostly Sh: A.A. few pieces SS: clr, f-mgrn, sli glauc, sub md, pr sort, sli fri, no fluor, NSO

A.A.

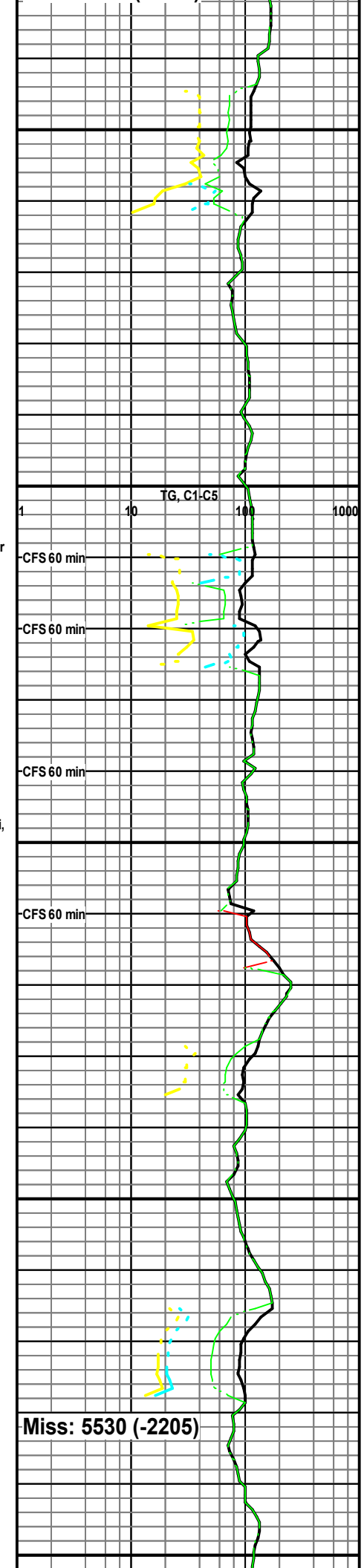
Samples mostly Sh till 5500

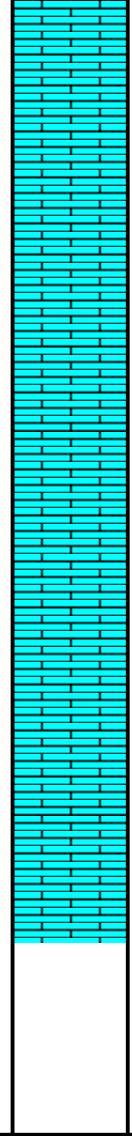
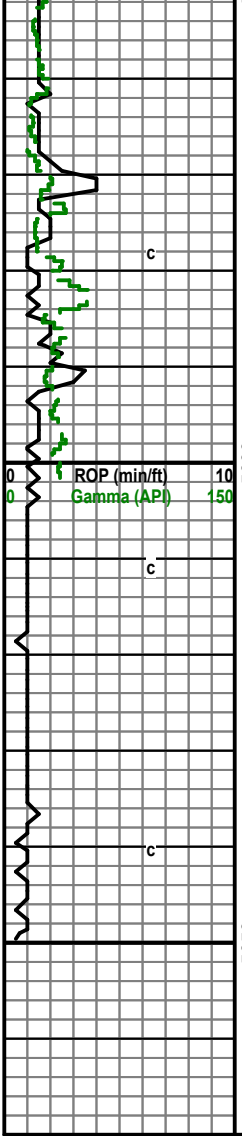
Sh: gry, few pieces SS: clr, vf-fgrn, sli glauc, sub md, pr sort, sli fri, NSO

Sh: gry-red, some LS: crm-reddish brwn, mcr-fxln, sandy,

LS: crm-reddish brwn-tan, mcr-fxln, some sli sandy

LS: A.A.





LS: crm, sli reddish brwn, mcr-fxln, sli sandy

LS: crm, sli rd-brwn, mcrxln, sli sandy

LS: crm-gry, mcrxln, some fxln, dense, sli fos

LS: crm-gry, mcr-fxln, some sandy,

RTD 5650

LTD 5631

